

BASIS OF BEARING

THE BEARINGS OF THE WALKER HEIGHTS SUBDIVISION ARE THE BASIS OF BEARING FOR THIS SURVEY.

SURVEYOR'S CERTIFICATE

THIS MAP WAS PREPARED BY ME OR UNDER MY DIRECTION AND WAS COMPILED FROM RECORD DATA IN CONFORMANCE WITH THE REQUIREMENTS OF THE SUBDIVISION MAP ACT AT THE REQUEST OF GEORGE NUGENT ON NOVEMBER 2, 1970. I HEREBY CERTIFY THAT IT CONFORMS TO ALL PROVISIONS OF APPLICABLE STATE LAW AND LOCAL ORDINANCES HAVE BEEN COMPLIED WITH.

Walter G. Reid

WALTER G. REID R.C.E. 7522
VIRGINIA CITY, NEVADA

PARCEL MAP 32-4
BEING A DIVISION OF THE PARCEL
SHOWN IN BOOK 4 PAGE 15
PORTION OF NW1/4 SE1/4 SEC. 28

T. 5 N, R. 25 E, M. D. B. & M.

BRIDGEPORT, MONO COUNTY, CALIFORNIA

PLANNING COMMISSION'S CERTIFICATE

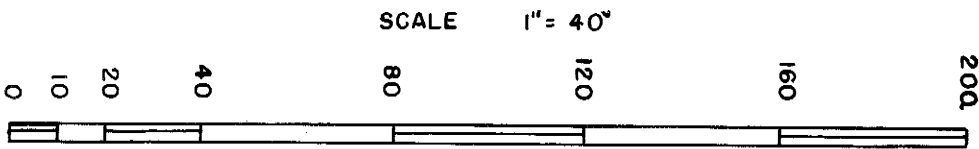
THIS IS TO CERTIFY THAT THIS PARCEL MAP IS IN ACCORD WITH THE APPROVED TENTATIVE MAP OF THE PARCELS.

Robert M. Landy DIRECTOR
MONO COUNTY PLANNING COMMISSION

COUNTY SURVEYOR'S CERTIFICATE

THIS MAP HAS BEEN EXAMINED THIS 4th DAY OF January, 1972, FOR CONFORMANCE WITH THE REQUIREMENTS OF SECTION 11575 OF THE SUBDIVISION MAP ACT.

Richard L. Gosh P.E.
COUNTY SURVEYOR



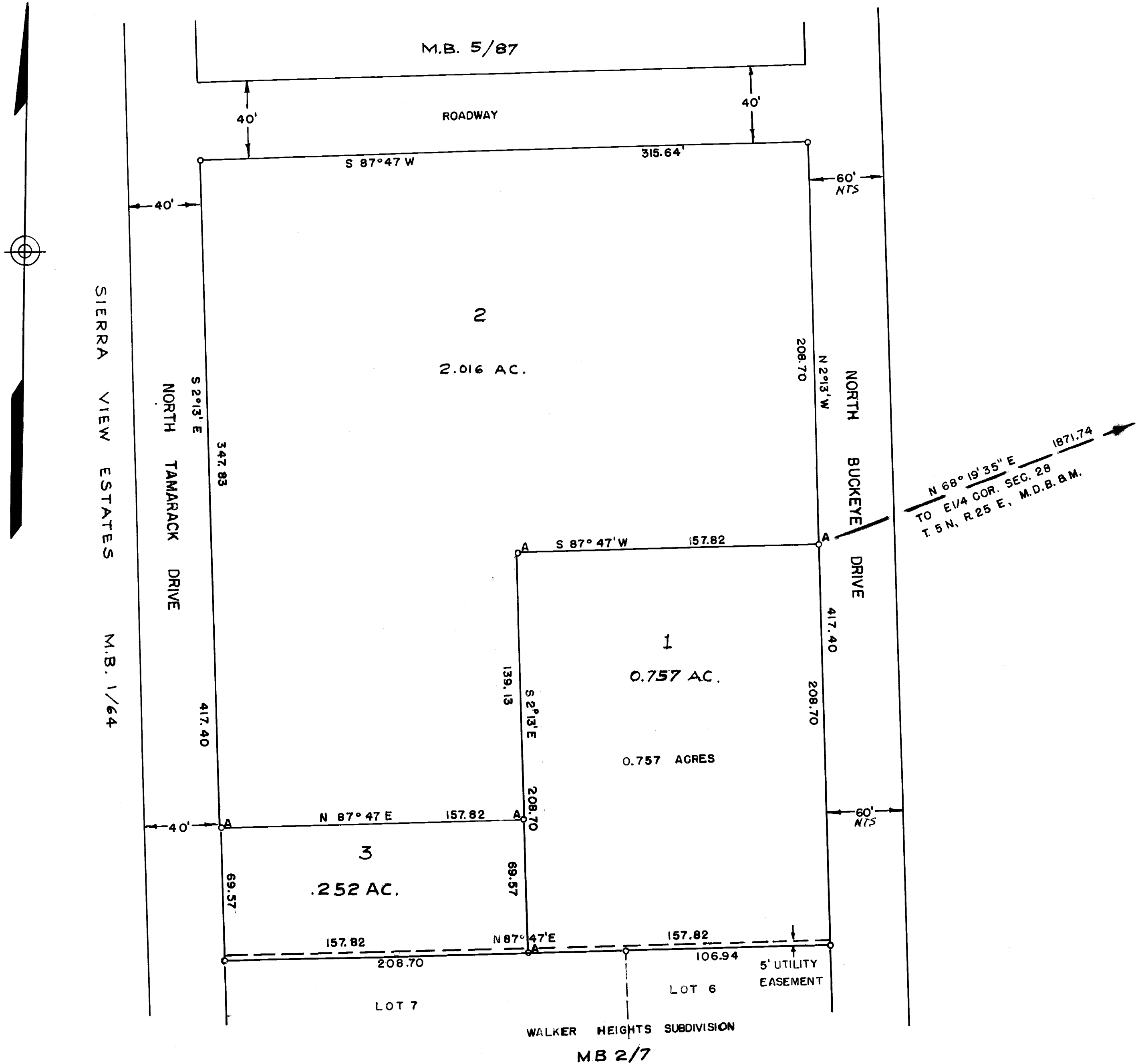
0 STEEL PINS SET PER M.B. 4/15
0A NOTHING SET

No. 3109

RECORDER'S CERTIFICATE

FILED THIS 10th DAY OF January, 1972 AT 3:30 P.M. IN BOOK 1 OF Parcel Maps ON PAGE 1 AT THE REQUEST OF George Nugent.

Ann M. Webb
COUNTY RECORDER



Vol 1 of P/M page 1