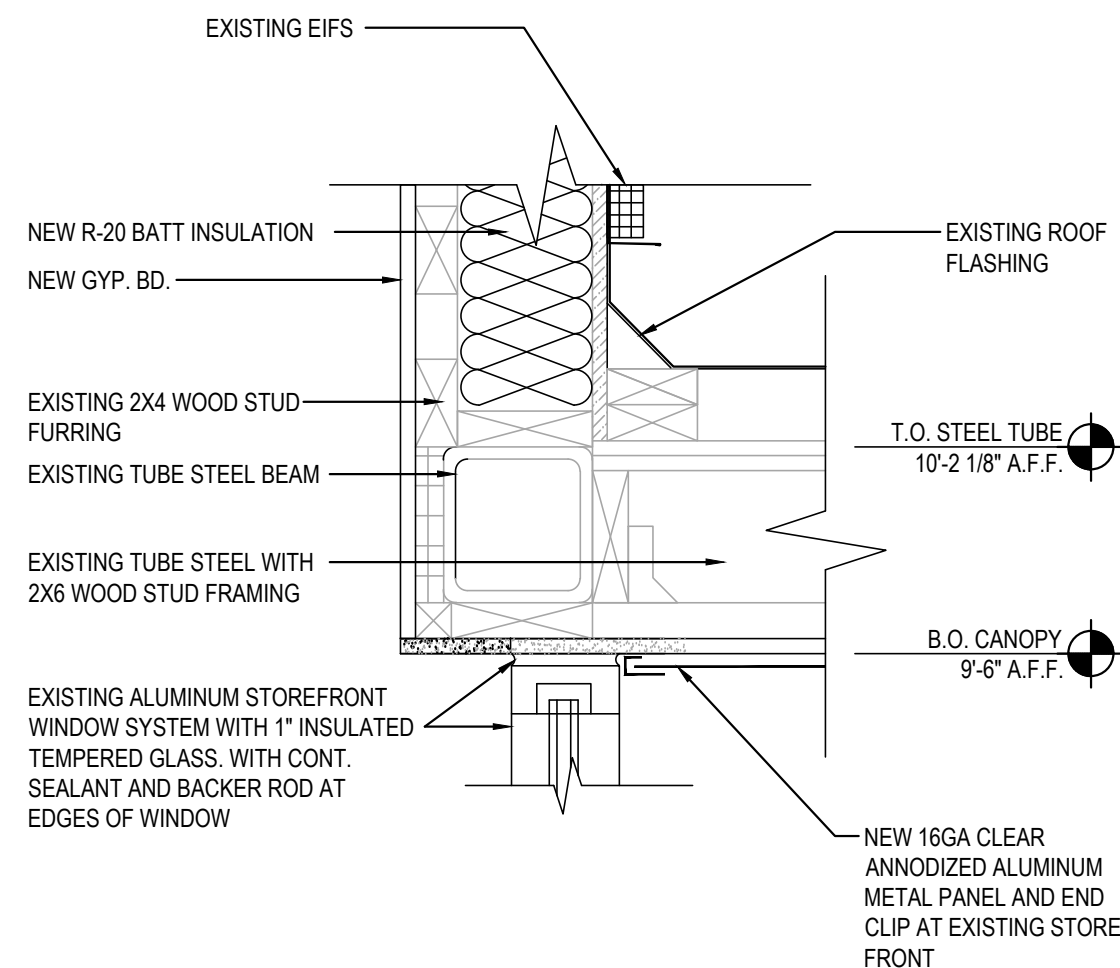


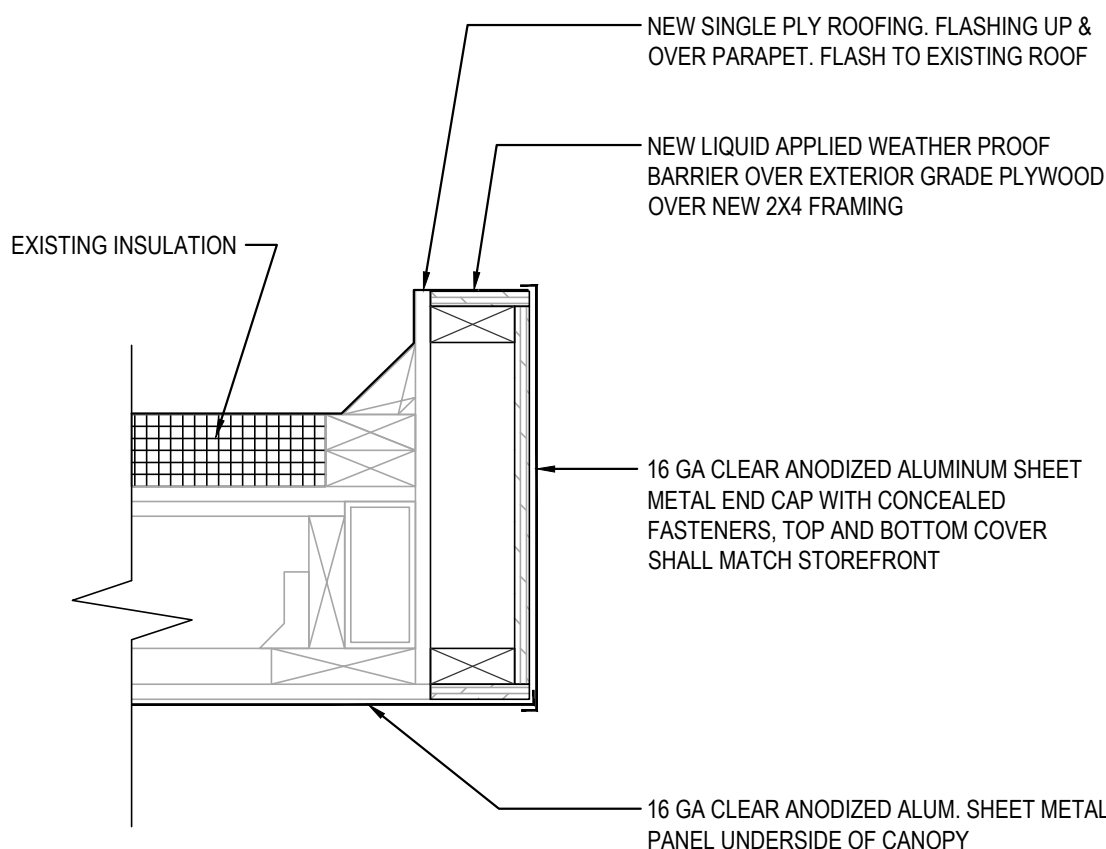
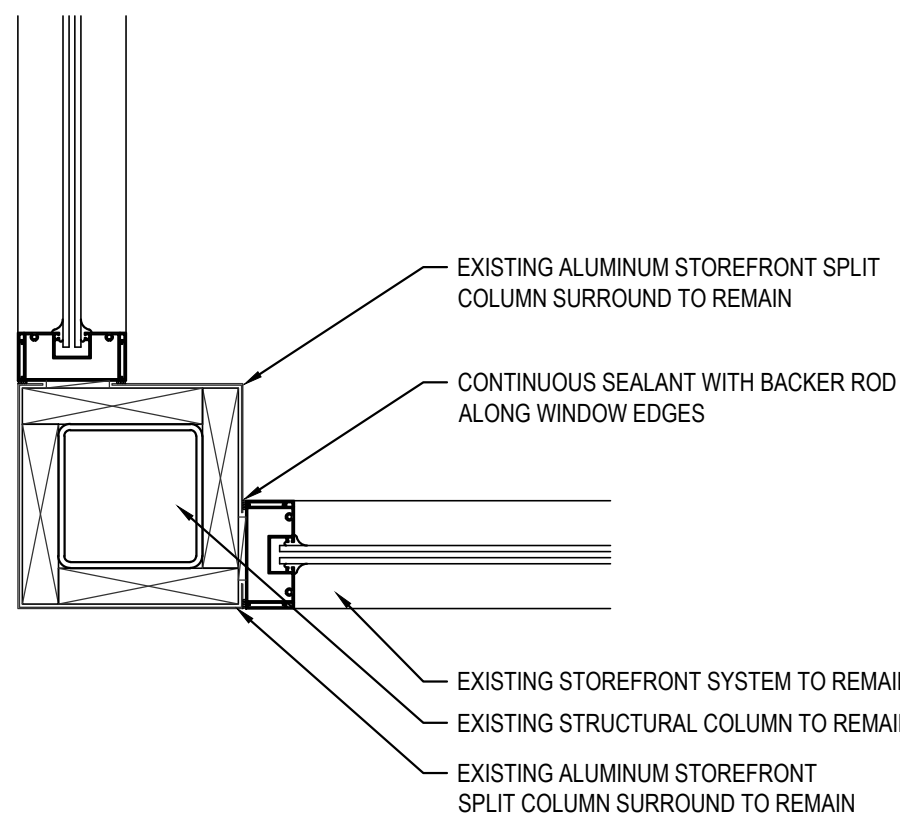
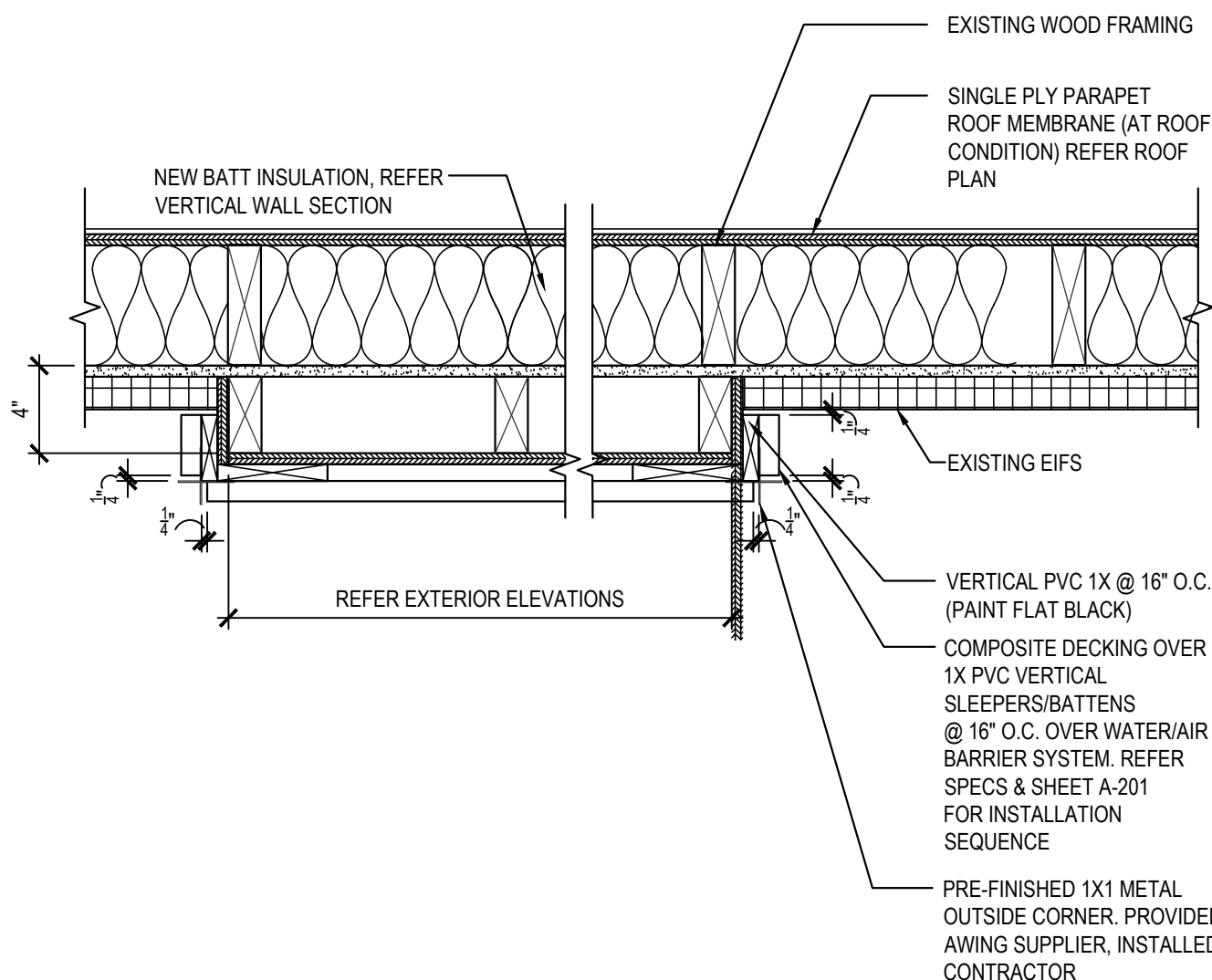
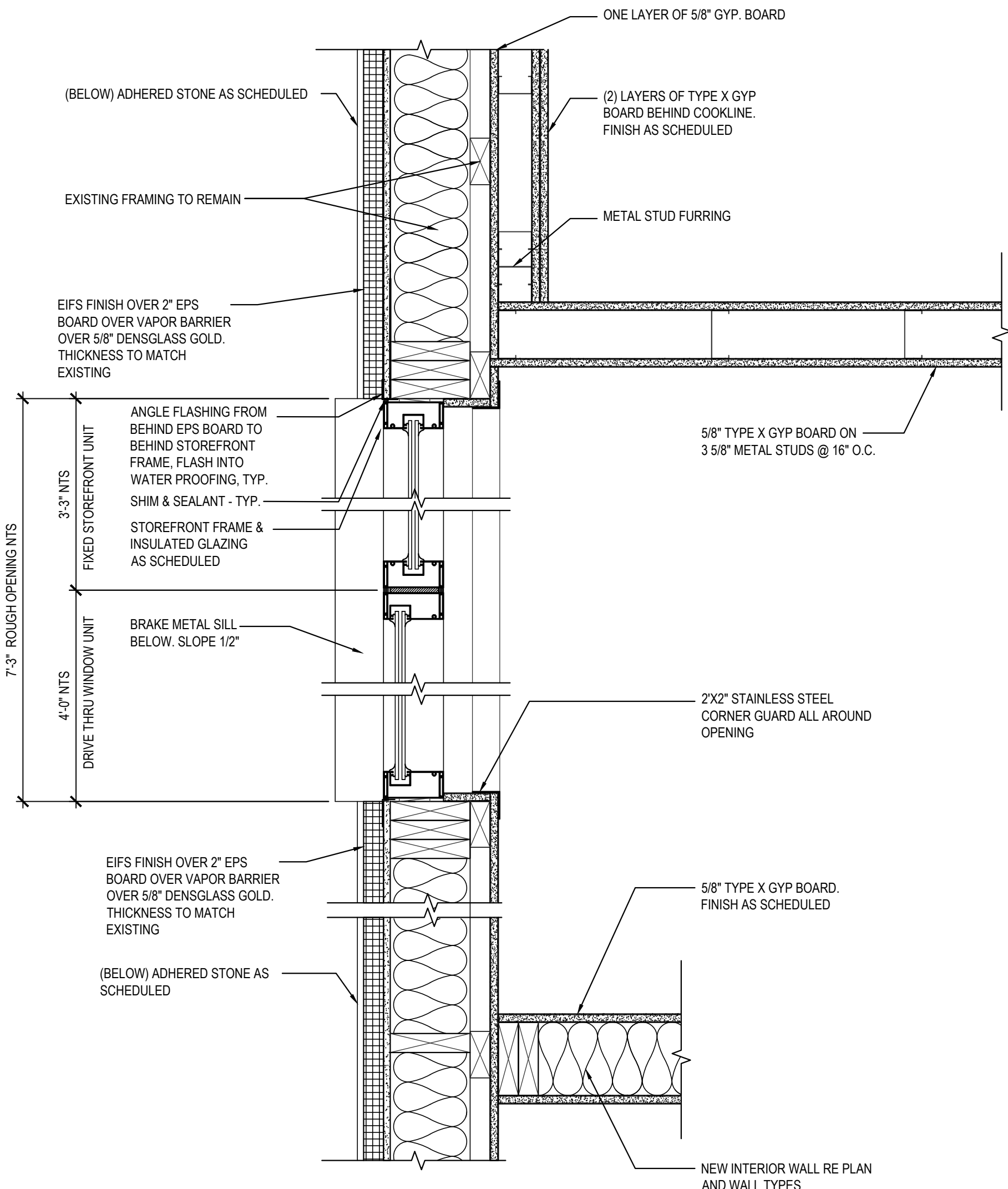
- NOTES
- 1: THE USE OF THIS DETAIL IS NOT TO EXCEED A 2-INCH PER 12-INCH SLOPE.
 - 2: A WOOD NAILER IS REQUIRED IF ONE OR MORE INCHES OF INSULATION IS USED. TOP OF WOOD NAILER IS TO BE FLUSH WITH TOP OF INSULATION. BE SURE THAT THE WOOD NAILER EXTENDS AT LEAST 1/2-INCH BEYOND THE HORIZONTAL EDGE OF THE SNAP-ON BASE.
 - 3: THE FASTENERS USED TO ATTACH THE BASE TO WOOD NAILERS, AND THE MEMBRANE TO THE FACE OF THE NAILERS, MUST BE SPACED NO GREATER THAN 6-INCHES ON-CENTER. THE FASTENER SPACING MUST BE INCREASED TO 3-INCHES ON-CENTER WHEN ATTACHING THE BASE WITHIN 10-FOOT (MIN.) OF THE OUTSIDE CORNERS OF THE BUILDING.
 - 4: ALLOW FOR 1/2-INCH EXPANSION GAP BETWEEN 10-FOOT LENGTHS OF SNAP-ON BASE. OVERLAP THE SNAP-ON COVERS BY 2-INCHES BETWEEN 10-FOOT LENGTHS.



PLAN SECTION/DETAIL 09
Scale= 1 1/2" = 1'-0" A-401

3-INCH HIGH, 2-PIECE COMPRESSION EDGE 06
NTS A-401

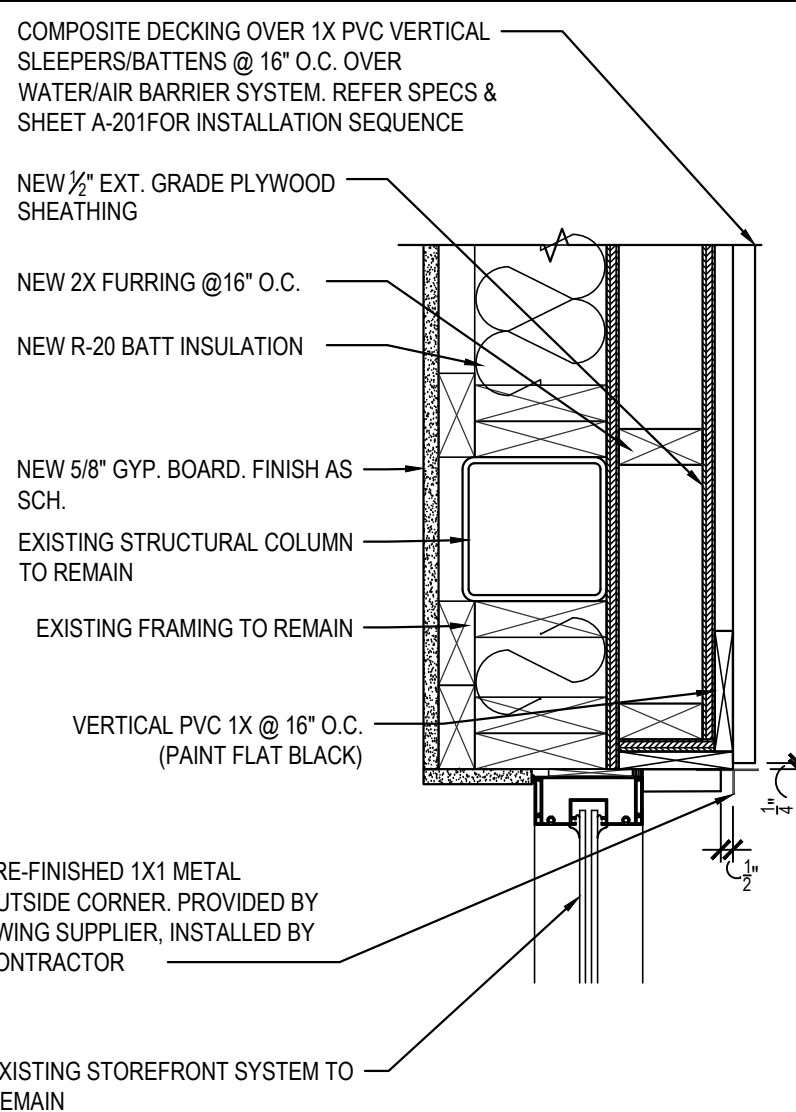
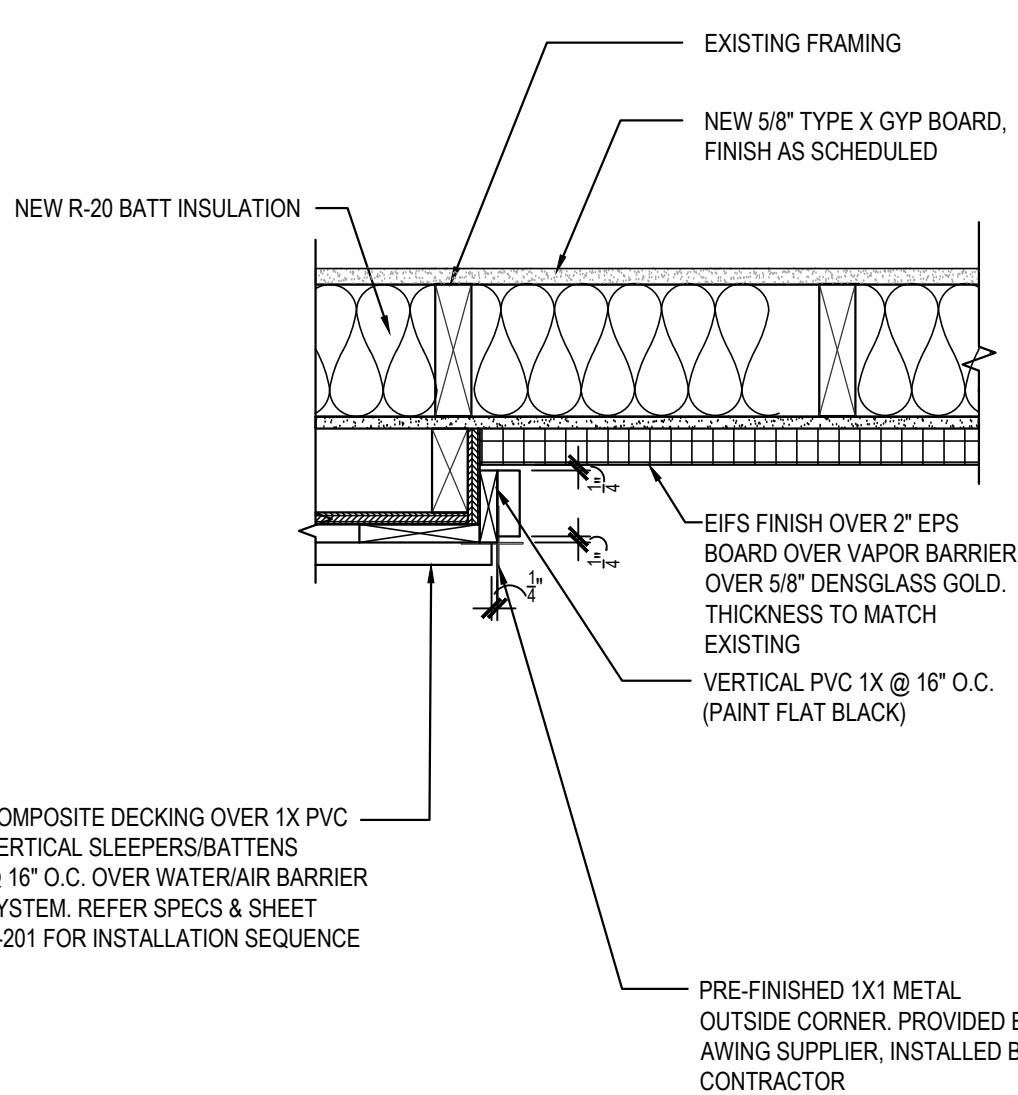
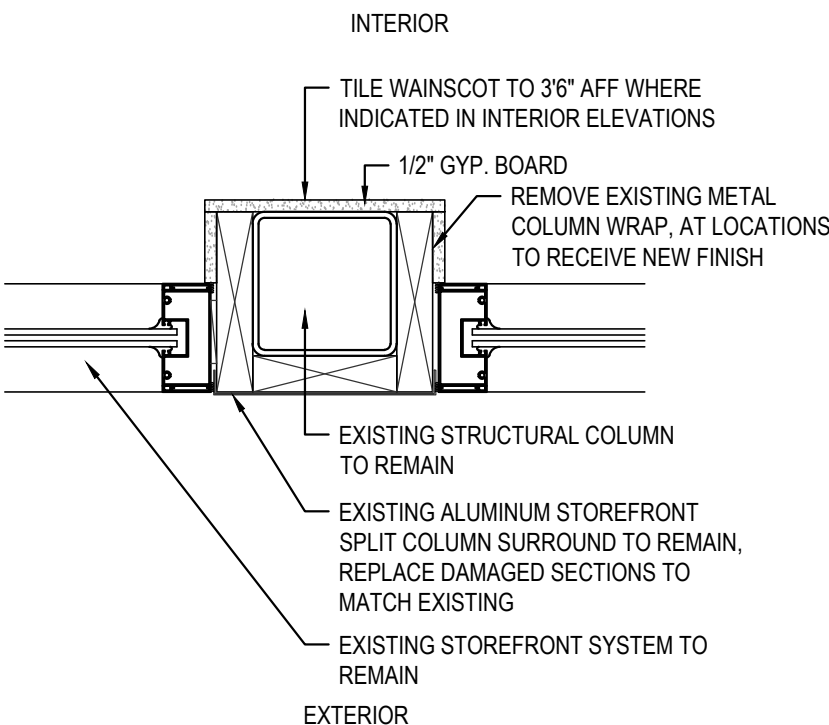
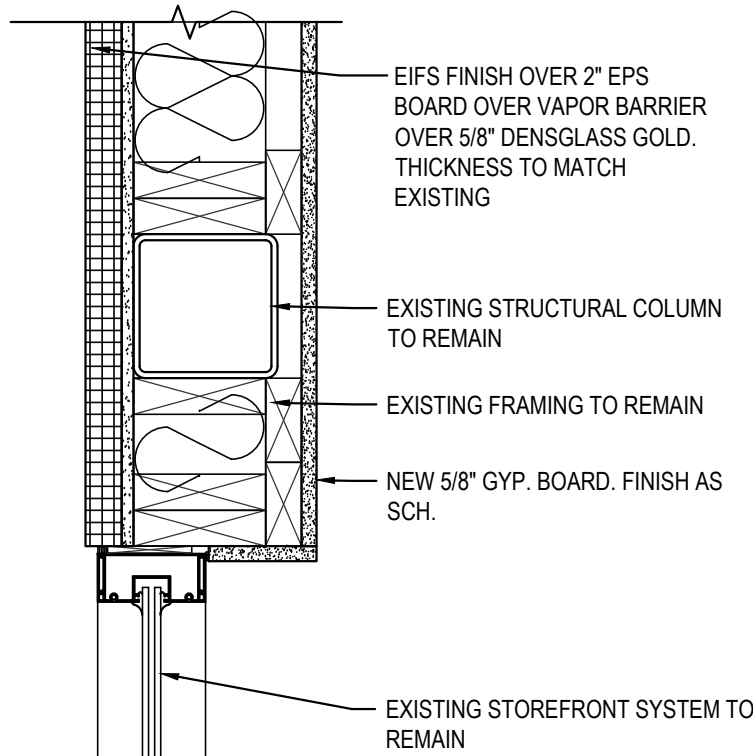
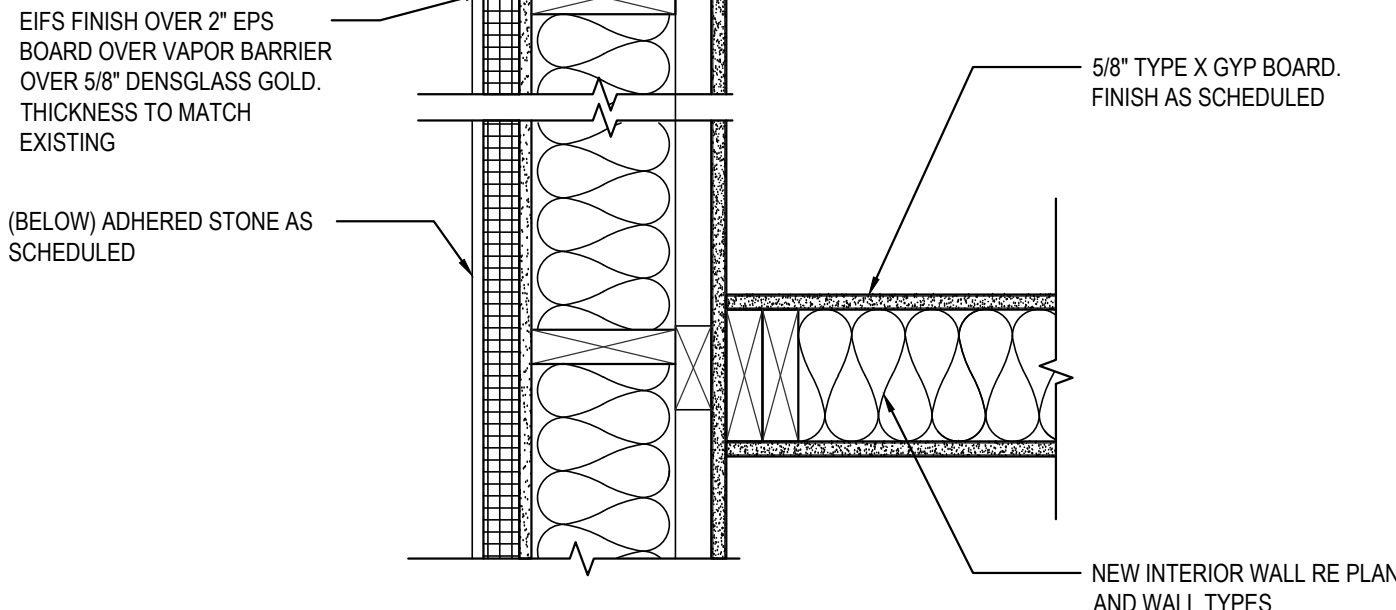
EXISTING CANOPY DETAIL 03
Scale= 1 1/2" = 1'-0" A-401



PLAN SECTION/DETAIL 05
Scale= 1 1/2" = 1'-0" A-401

PLAN SECTION/DETAIL 11
Scale= 1 1/2" = 1'-0" A-401

EXISTING STRUCTURAL COLUMN DETAIL 02
Scale= 1 1/2" = 1'-0" A-401



PLAN SECTION/DETAIL 08
Scale= 1 1/2" = 1'-0" A-401

PLAN SECTION/DETAIL 07
Scale= 1 1/2" = 1'-0" A-401

PLAN SECTION/DETAIL 04
Scale= 1 1/2" = 1'-0" A-401

PLAN SECTION/DETAIL 10
Scale= 1 1/2" = 1'-0" A-401

PLAN SECTION/DETAIL 01
Scale= 1 1/2" = 1'-0" A-401



PANDA EXPRESS, INC.
1683 Walnut Grove Ave.
Rosemead, California
91770
Telephone: 626.799.9898
Facsimile: 626.372.8288

All ideas, designs, arrangement and plans indicated or represented by this drawing are the property of Panda Express Inc. and were created for use on this specific project. None of these ideas, designs, arrangements or plans may be used by or disclosed to any person, firm, or corporation without the written permission of Panda Express Inc.

REVISIONS:

ISSUE DATE:

1st	DEVELOPER REVIEW	07.26.19
2nd	SITE PLAN SUBMITTAL	08.26.19
3rd	SITE COMMENTS	09.05.19
4th	ISSUE FOR PERMIT	10.01.19
5th	ISSUE FOR BID	11.07.19

DRAWN BY: PM / KL / EA

PANDA PROJECT #: S8-20-D7163

ARCH PROJECT #: 19027



Heights Venture
ARCHITECTURE + DESIGN

HOUSTON 1111 North Loop West, Suite 800 Houston, Texas 77008 713.869.1163 V
DALLAS 5741 Legacy Drive, Suite 320 Plano, Texas 75024 972.490.7292 V

PANDA EXPRESS

2096 INTERSTATE DR.
OPELIKA, AL 36801
3600 FSDT
TWW REMODEL

A-401

ARCHITECTURAL
DETAILS

TRUE WARM & WELCOME

BID ISSUE