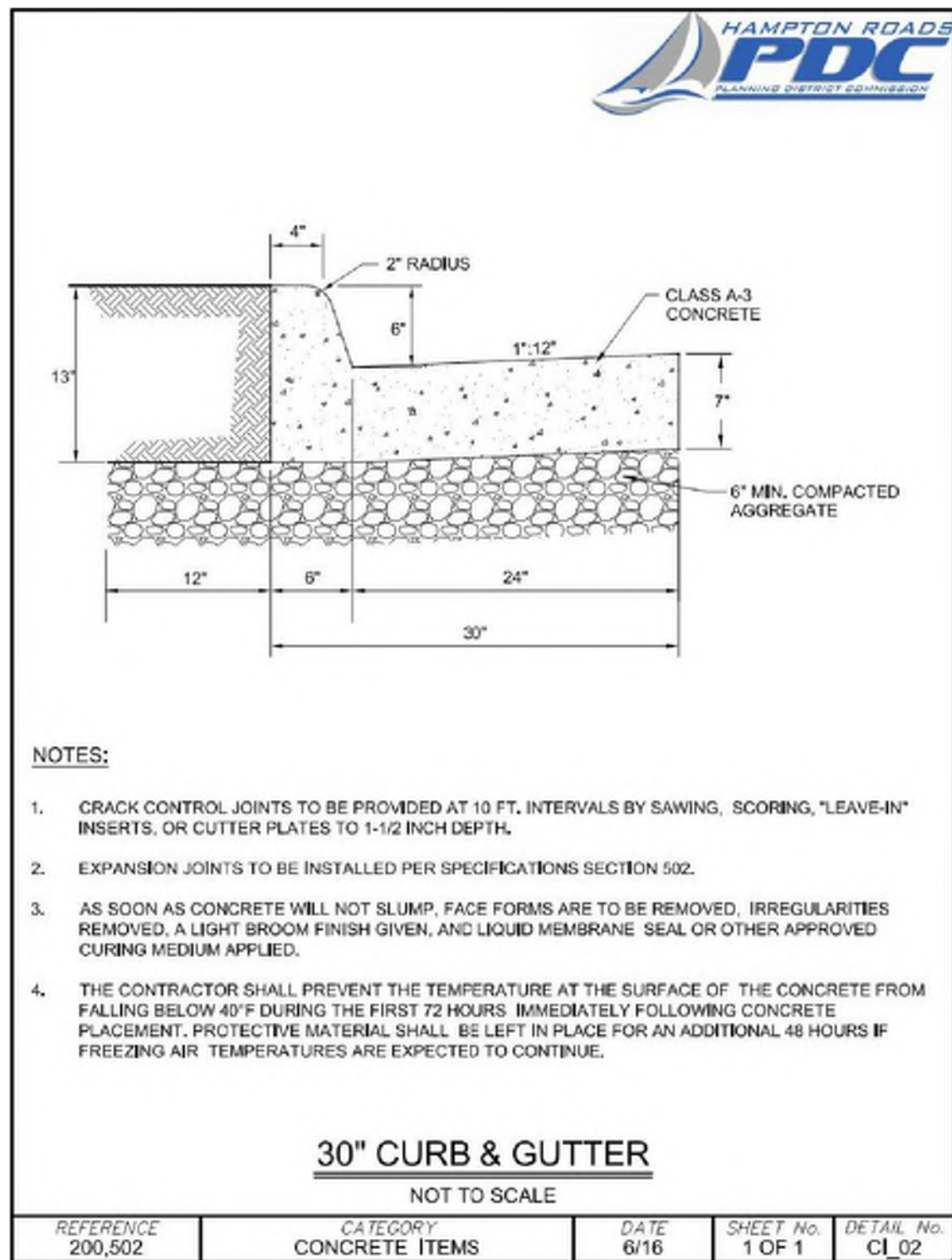
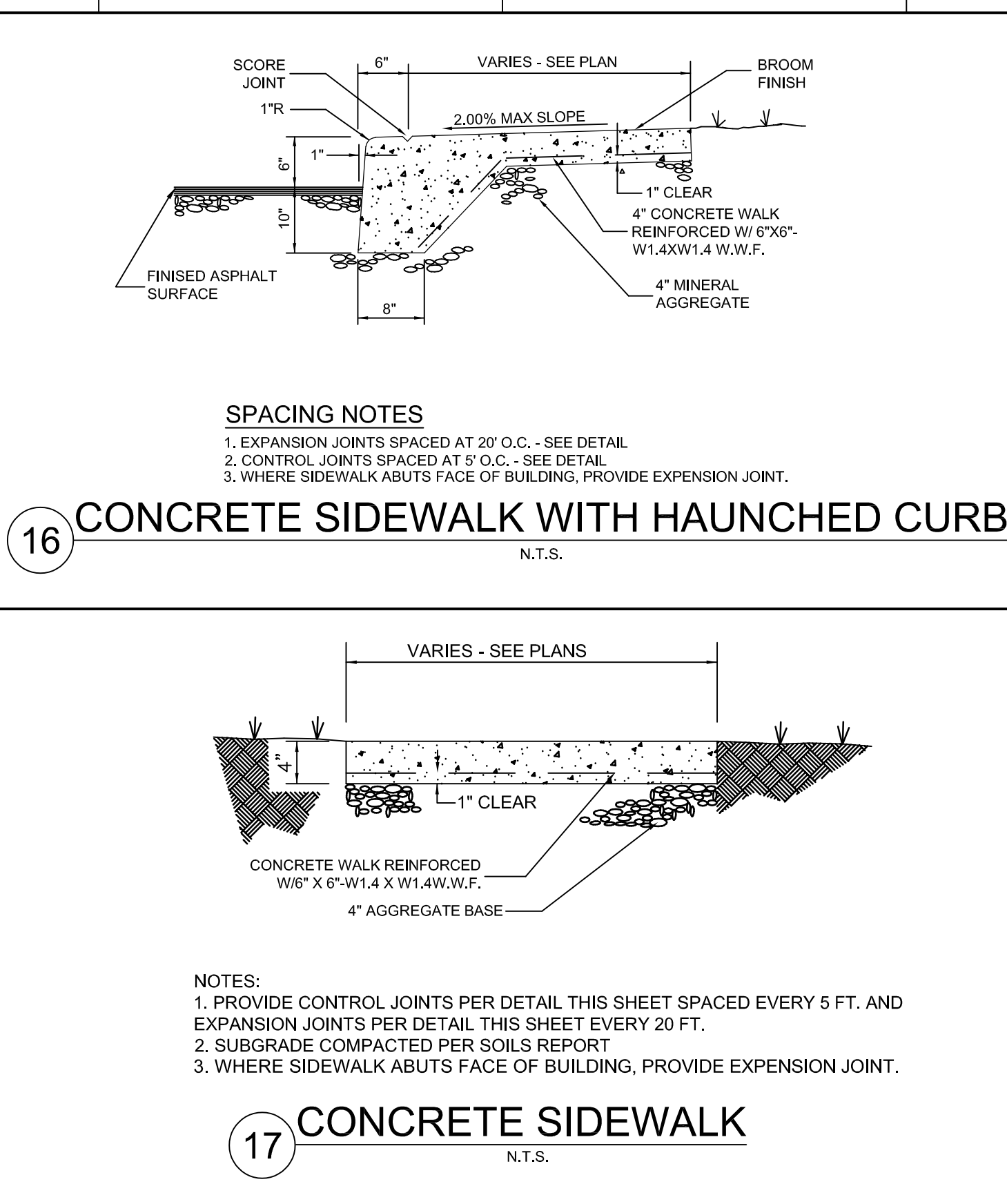


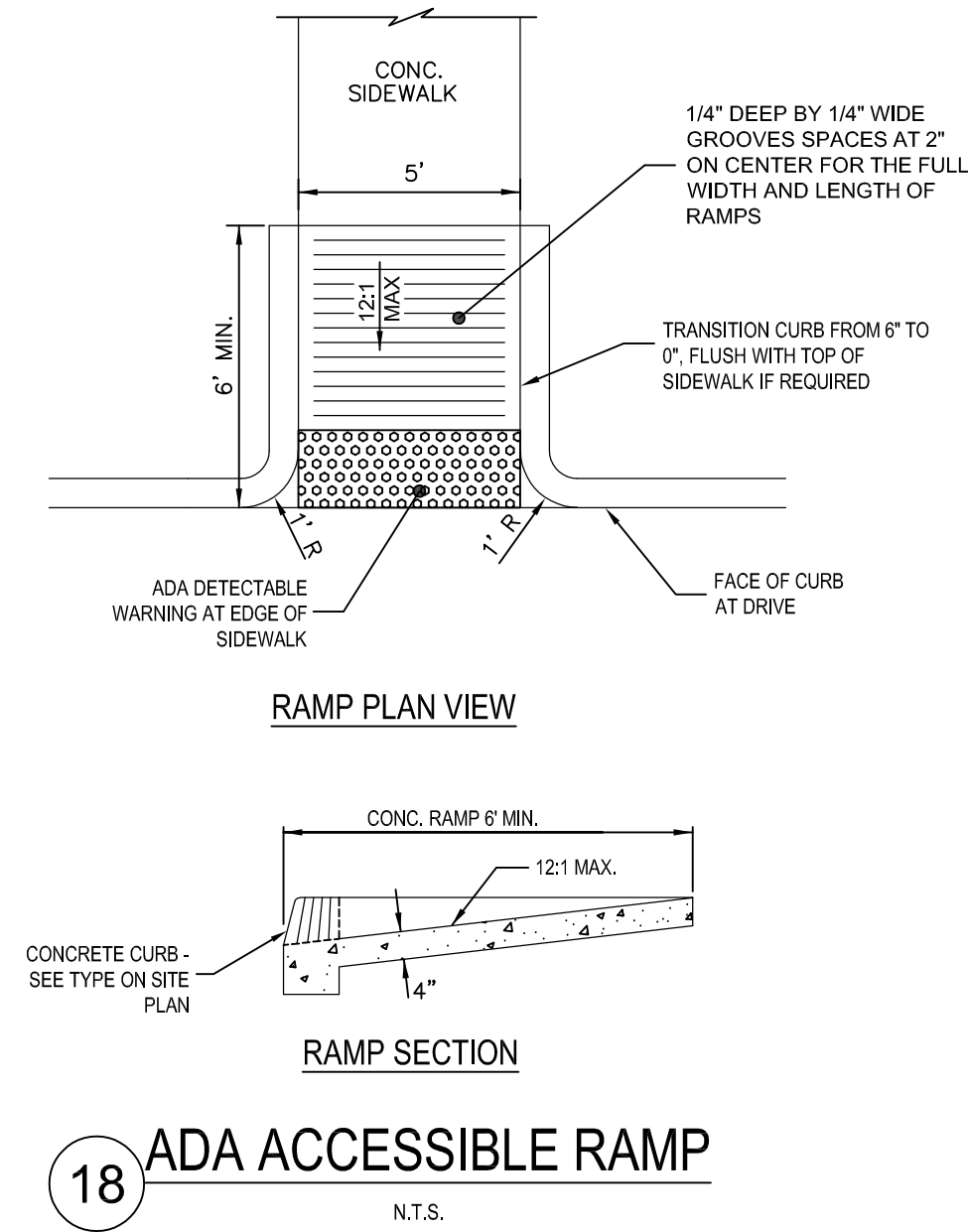
14



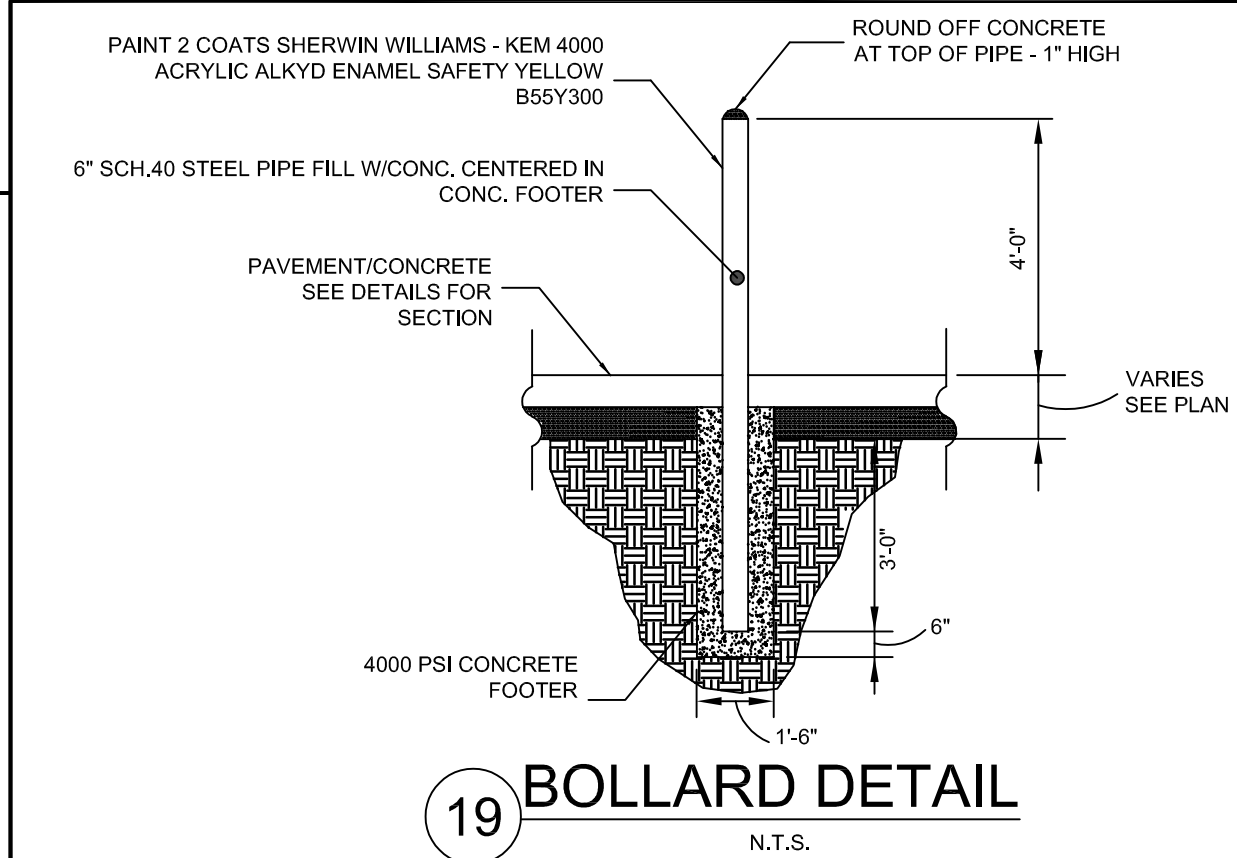
15



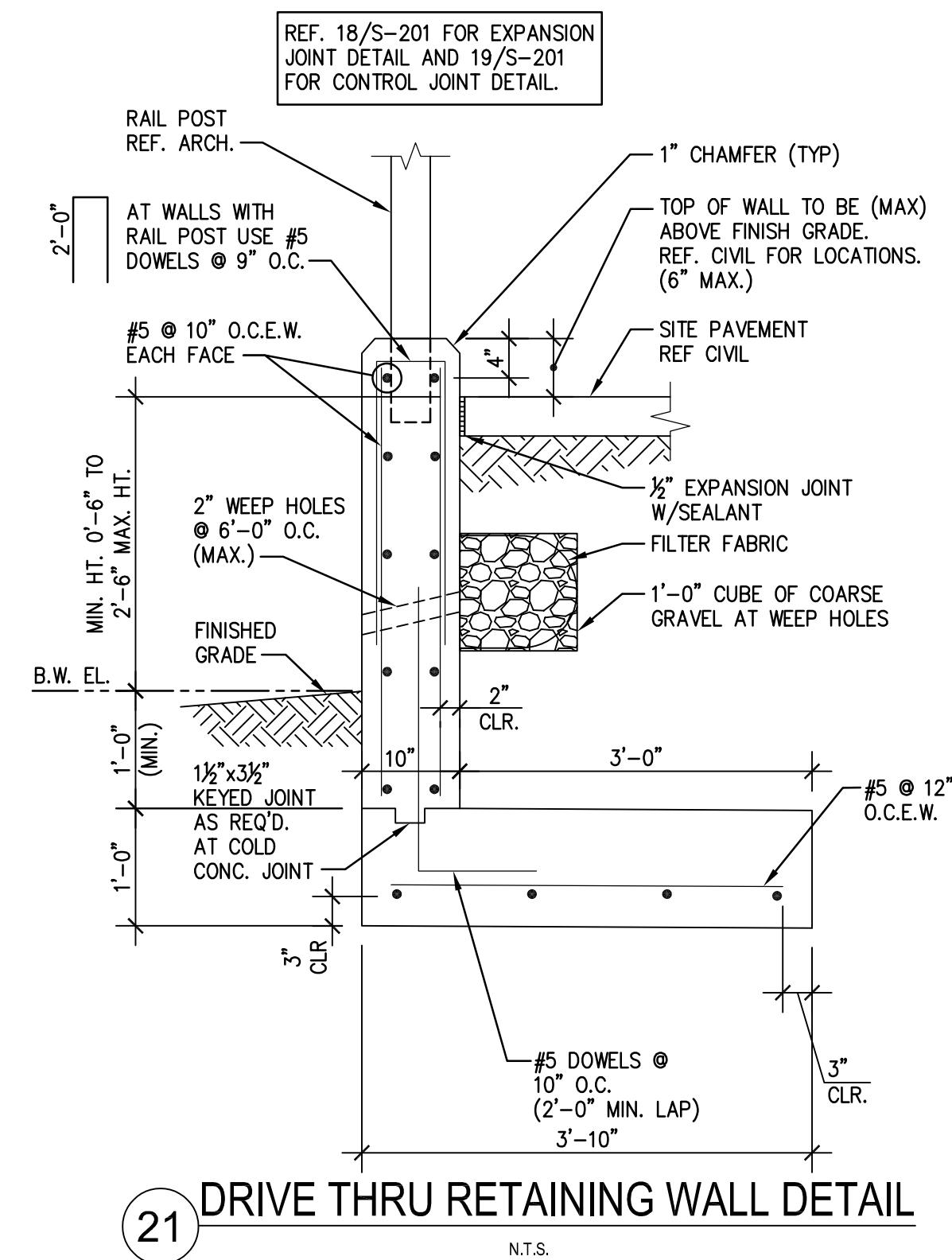
17



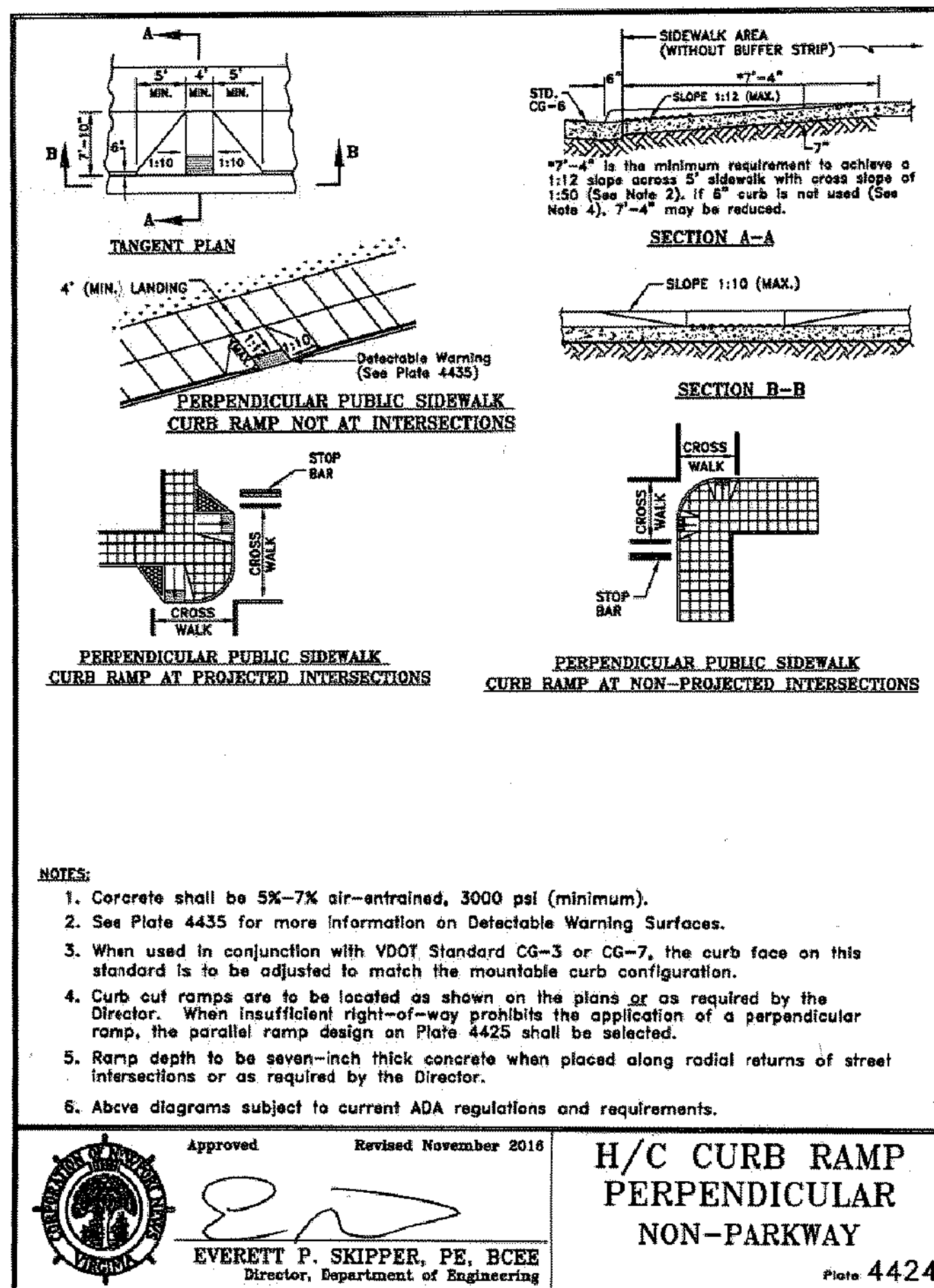
18



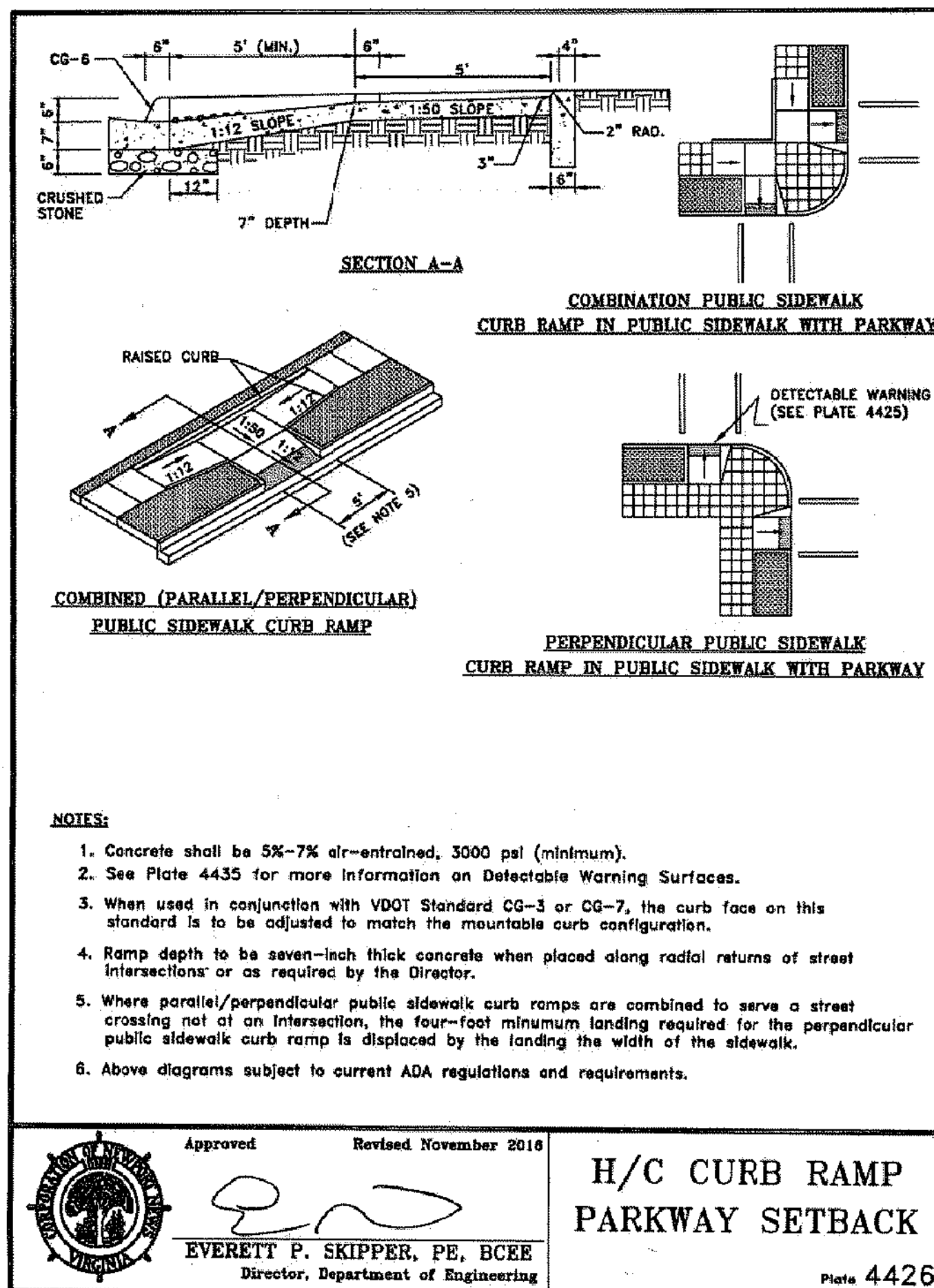
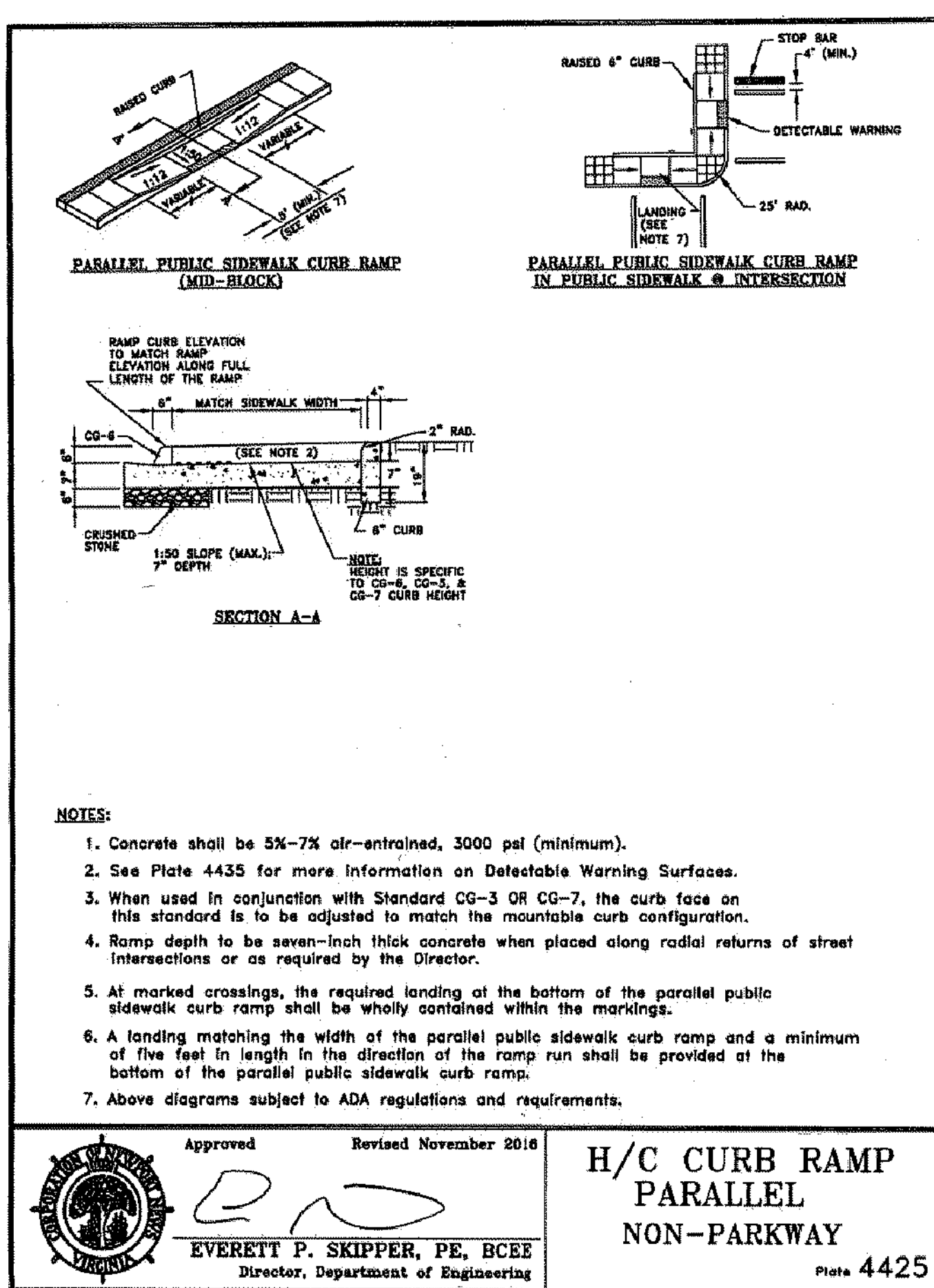
19



21



20



PANDA EXPRESS, INC.  
1683 Walnut Grove Ave.  
Rosemead, California  
91770

Telephone: 626.799.9898  
Facsimile: 626.372.8288

All ideas, designs, arrangement and plans indicated or represented by this drawing are the property of Panda Express Inc. and were created for use on this specific project. None of these ideas, designs, arrangements or plans may be used by or disclosed to any person, firm, or corporation without the written permission of Panda Express Inc.

REVISIONS:

ISSUE DATE:

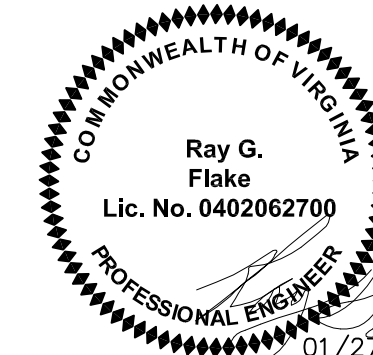
1	PERMIT/BID SET	02-12-21
2	CITY COMMENTS	08-17-21
3	CITY COMMENTS	10-22-21
4	CITY COMMENTS	12-15-21
5	CITY COMMENTS	01-27-22
	ISSUE FOR BID (DT)	02-04-22

DRAWN BY: LEB

PANDA PROJECT #: S8-21-D8164

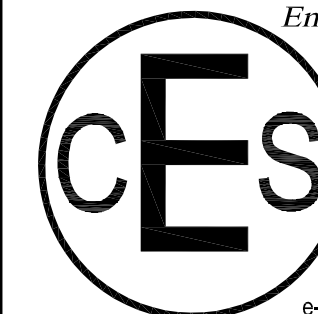
PANDA STORE #: D-8164

ARCH PROJECT #: XXXXX-XXX



Civil Engineering Services

Engineering, Land Planning,  
and Environmental



7705 Spicer Farm Lane  
Fairview, Tennessee  
37062  
Phone: (615) 533-0401

e-mail: ray@civilingineeringservices.net

PANDA EXPRESS

TRUE WARM AND WELCOME  
6104 JEFFERSON AVENUE  
NEWPORT NEWS, VA 23605

HARDSCAPE  
DETAILS II

C03.2

TRUE WARM & WELCOME 2300 R2