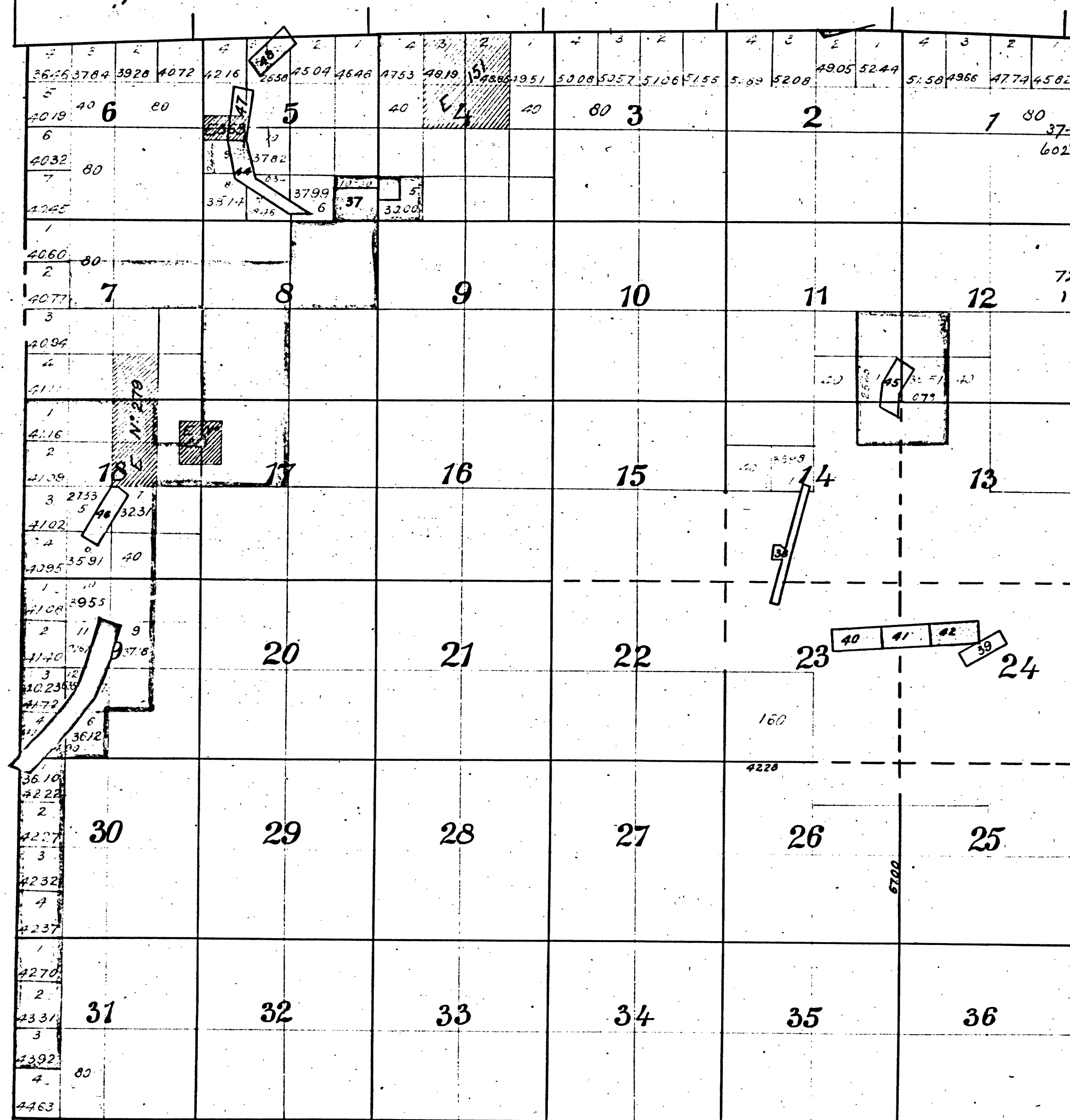


Township N^o 5 North, Range N^o 12 East, Mount Diablo Meridian, California.



≠ Mineral Land returned Jan. 1871.

Entry Lot
E 64 37
602 37
309 39
1609 40
1610 41
42
43
626 44
W-3 45
726-693 46
1018 47
48
49
151 23
279 ..
363 ..
881 ..

Red Hill Placer Gold Pat. July 16th 72 N^o 387 V66-15
(Wet Gulch & Chaparral Q. M. M. S. Pat. Aug 14th 78 N^o 2945 V30-25
Alpine Quartz (362) Pat. Jan 8th 76 N^o 1876 V62-23
Vincent Quartz no note
Alameda Quartz no note
Tiger Quartz V70-14
Esperance Gold Quartz Pat. Feb 28th 80 N^o 3782 V66-34
Whiskey Slide Quartz (July 17th 79)
Lamphear Quartz V79-9
Mammoth Quartz V87-24 .. Sept 7 80-
Bryon Gold Quartz Mine S.G.L. Nov 23rd 82
Empire Gravel Mine S.G.L. Aug. 13th 81

Pat. Dec 9th 73 N^o 70.
May 4th 75 .. 1320
Jan. 14th 76 .. 1603

Amd^{ts} in Sec 5, S.G.L. Sept 7th 80.
" " 18 " Feb 17th 79.
" " 11th 12 " July 17th 79.

T 5 N. R 12 E.
M.D.M.

49 Empire Gravel Mine

DEPARTMENT OF THE INTERIOR,
GENERAL LAND OFFICE,
Washington, D. C. ~~Aug 14th 1902~~
I hereby certify that this is a true copy
of the plat of official survey of the lands
to which it relates, on file in this office.

Al. L. L. L.
Recorder, General Land Office.

The above diagram of Sections 19 & 30 Township 5 North, Range 12 East
Mount Diablo Meridian, is correctly copied from the original
map as amended and on file in this Office

U.S. Surveyor General's Office
San Francisco California
August 13th 1881

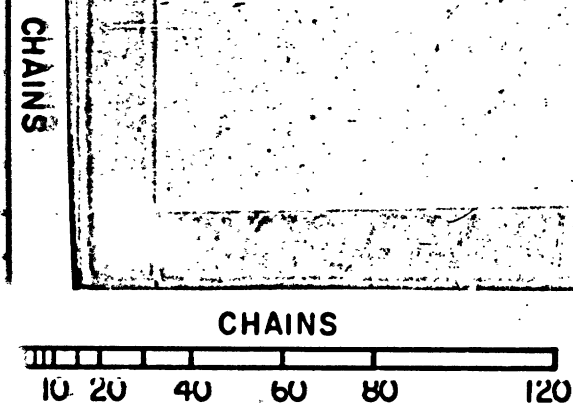
Theo Wagner
U. S. Surv Gen. Cal

The above Diagram of Township N^o 5 North Range N^o 12 East Mount Diablo Meridian correctly
shows the Amendments made in accordance with the Plats of Mining Surveys approved to date.
Surveyor General's Office
San Francisco California
May 22nd 1880

Theo Wagner

Surv Gen. Cal^a

41 432



T 5 N R 12 E M D

BLM 334