

Note: The purpose of this Survey is to show the monumentation of deed recorded in Book 248, Page 395 Official Records of El Dorado County.

The principle of Junior and Senior Rights was used to determine the rear line of the Gobie Parcel (Senior Parcel) . Distances along the side lines of Lot 27 given in (R2) were held as controlling.

Legend

- (R1) ~ record as per Rubicon Properties, SD A-52
 (R2) ~ record as per Book 248, Page 395
 (R3) ~ record as per Doc. No. 99-0009481
 (R4) ~ record as per Book 331, Page 172
- ~ fd. monument as noted
- 1 Drive 40' right of water
 135.94' (R1)
 135.94' (R2)
 135.94' (R3)
 135.94' (R4)
 135.94' (R5)
 135.94' (R6)
 135.94' (R7)
 135.94' (R8)
 135.94' (R9)
 135.94' (R10)
 135.94' (R11)
 135.94' (R12)
 135.94' (R13)
 135.94' (R14)
 135.94' (R15)
 135.94' (R16)
 135.94' (R17)
 135.94' (R18)
 135.94' (R19)
 135.94' (R20)
 135.94' (R21)
 135.94' (R22)
 135.94' (R23)
 135.94' (R24)
 135.94' (R25)
 135.94' (R26)
 135.94' (R27)
 135.94' (R28)
 135.94' (R29)
 135.94' (R30)
 135.94' (R31)
 135.94' (R32)
 135.94' (R33)
 135.94' (R34)
 135.94' (R35)
 135.94' (R36)
 135.94' (R37)
 135.94' (R38)
 135.94' (R39)
 135.94' (R40)
 135.94' (R41)
 135.94' (R42)
 135.94' (R43)
 135.94' (R44)
 135.94' (R45)
 135.94' (R46)
 135.94' (R47)
 135.94' (R48)
 135.94' (R49)
 135.94' (R50)
 135.94' (R51)
 135.94' (R52)
 135.94' (R53)
 135.94' (R54)
 135.94' (R55)
 135.94' (R56)
 135.94' (R57)
 135.94' (R58)
 135.94' (R59)
 135.94' (R60)
 135.94' (R61)
 135.94' (R62)
 135.94' (R63)
 135.94' (R64)
 135.94' (R65)
 135.94' (R66)
 135.94' (R67)
 135.94' (R68)
 135.94' (R69)
 135.94' (R70)
 135.94' (R71)
 135.94' (R72)
 135.94' (R73)
 135.94' (R74)
 135.94' (R75)
 135.94' (R76)
 135.94' (R77)
 135.94' (R78)
 135.94' (R79)
 135.94' (R80)
 135.94' (R81)
 135.94' (R82)
 135.94' (R83)
 135.94' (R84)
 135.94' (R85)
 135.94' (R86)
 135.94' (R87)
 135.94' (R88)
 135.94' (R89)
 135.94' (R90)
 135.94' (R91)
 135.94' (R92)
 135.94' (R93)
 135.94' (R94)
 135.94' (R95)
 135.94' (R96)
 135.94' (R97)
 135.94' (R98)
 135.94' (R99)
 135.94' (R100)
- fd. 1 1/4" pipe no cap per (R1)
 set tag LS 5886
- (28)

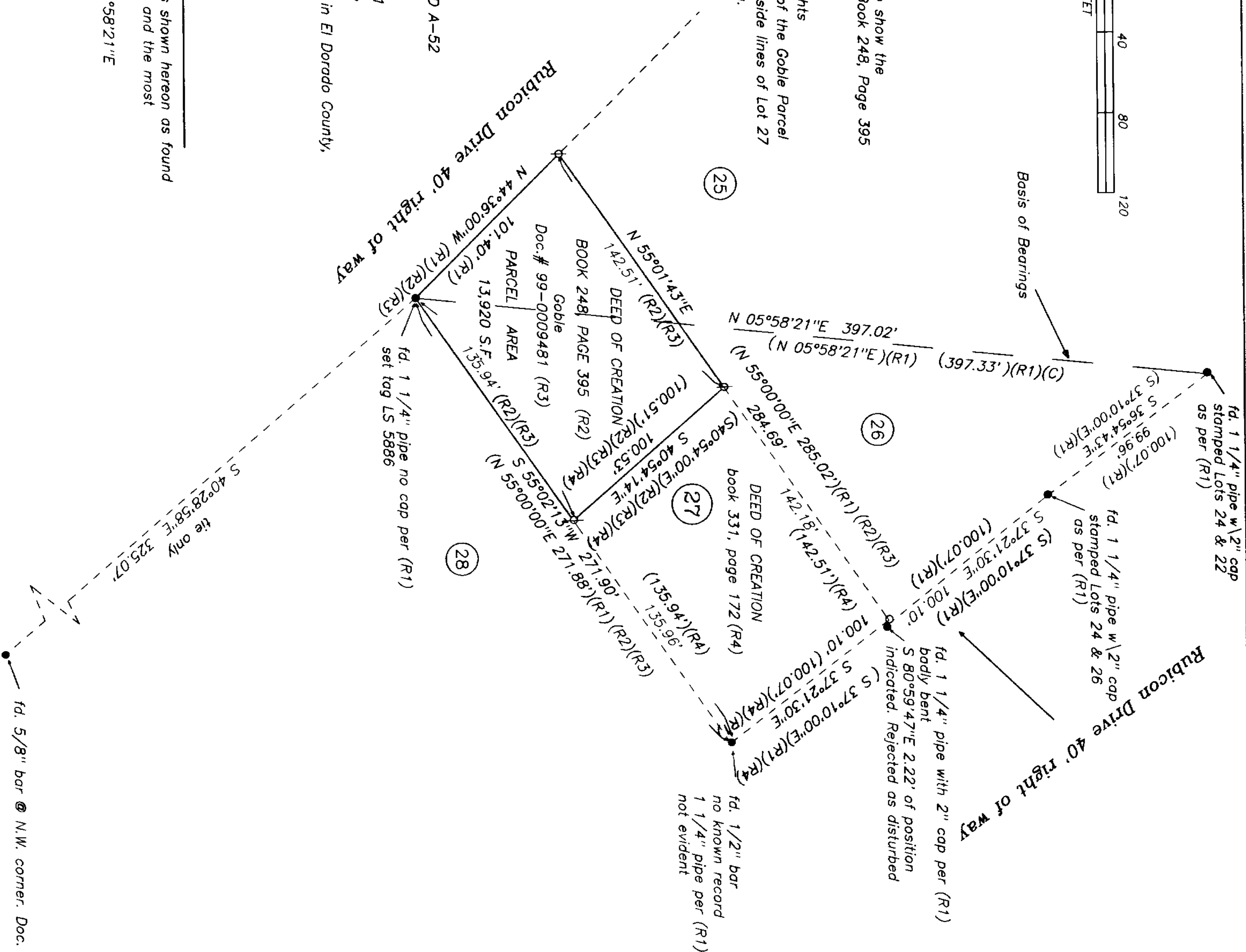
Note: All Documents noted above are filed in El Dorado County, California

(25) ~ Lot Number per SD A-52

Basis of Bearings

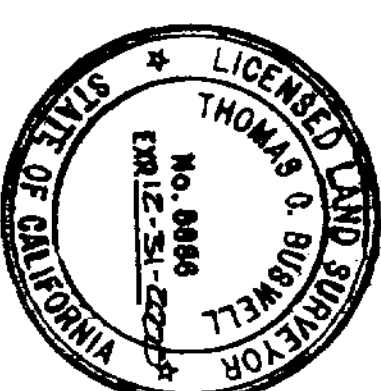
The calculated line between monuments shown hereon as found at the most Northerly corner of Lot 24 and the most Southerly corner of Lot 27.

Bearing calculated as per (R1) $\sim N 05^{\circ}58'21''E$



Surveyor's Statement

THIS MAP CORRECTLY REPRESENTS A SURVEY MADE BY ME OR UNDER MY DIRECTION IN CONFORMANCE WITH THE REQUIREMENTS OF THE LAND SURVEYOR'S ACT AT THE REQUEST OF LEE GOBLE IN NOVEMBER OF 1999.



THOMAS C. BUSWELL, CA, PLS 5886
LICENSE EXPIRES 12-31-2000

County Surveyor's Statement

THIS MAP HAS BEEN EXAMINED IN ACCORDANCE WITH SECTION 8766 OF THE LAND SURVEYOR'S ACT THIS 19TH DAY OF APRIL, 2000.

DANIEL S. RUBIN

DANIEL S. RUSSELL, LS 5017
COUNTY SURVEYOR
COUNTY OF EL DORADO
LICENSE EXPIRES 12-31-01



ASSOCIATE LAND SURVEYOR
RICHARD L. BRINER L.S. 5084
LICENSE EXPIRES 06--30-03

County Recorder's Statement

FILED THIS 19th DAY OF April, 2000 AT 11:06:55 AM
IN BOOK 24 OF SURVEYS AT PAGE 36
AT THE REQUEST OF THOMAS C. BUSWELL, PLS.

DOCUMENT NO. 2000-0019367

BY DEPUTY: Linda Lawrence

William E. Schultz
WILLIAM E. SCHULTZ
COUNTY RECORDER-CLERK
COUNTY OF EL DORADO

Record of Survey

Being the West 1/2 of Lot 27, Block "H" Rubicon Properties Book "A", Page 52 also being a portion of Section 32, Township 14 North, Range 17 East Mount Diablo Base and Meridian

*El Dorado County, California
December 1999, Scale 1" = 40'*