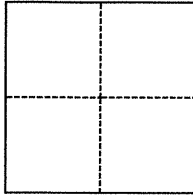


CORNER RECORD

Agency Index BK 117 PG 59
Document Number CR 12341

City of Ashland County of Alameda, California
Brief Legal Description Mon @ Bevilacqua Ct & Kent Avenue



CORNER TYPE

- ☐ Government Corner ☒ Control
☐ Meander ☐ Property
☐ Rancho ☐ Other

Date of Survey 8 3 2018

COORDINATES (Optional)

N. _____ E. _____

Elevation _____

Units ☐ Metric ☒ U.S. Survey Foot

Horizontal Datum _____

Zone _____ Epoch Date _____

Vertical Datum _____

☐ Complies with Public Resources Code §§8801-8819

☐ Complies with Public Resources Code §§8890-8902

PLS Act Ref.: ☐ 8765(d) ☒ 8771 ☐ 8773 ☐ Other:

Corner/
Monument: ☒ Left as found ☐ Established ☐ Rebuilt ☐ Pre-Construction
☐ Found and tagged ☐ Reestablished ☐ Referenced ☒ Post-Construction

Narrative of corner identified and monument as found, set, reset, replaced, or removed:

☐ See sheet #2 for description(s):

Pre CR 8624

Found in good condition

SURVEYOR'S STATEMENT

This Corner Record was prepared by me or under my direction in conformance with

the Professional Land Surveyors' Act on

Signed

9-22-18
Joseph P. Brajkovich P.L.S. or R.E. No. 5254



COUNTY SURVEYOR'S STATEMENT

This Corner Record was received

9 OCTOBER 2018

and examined and filed

18 JANUARY 2019

Signed

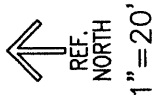
Michael Rubner P.L.S. or R.E. No. 6843

Title

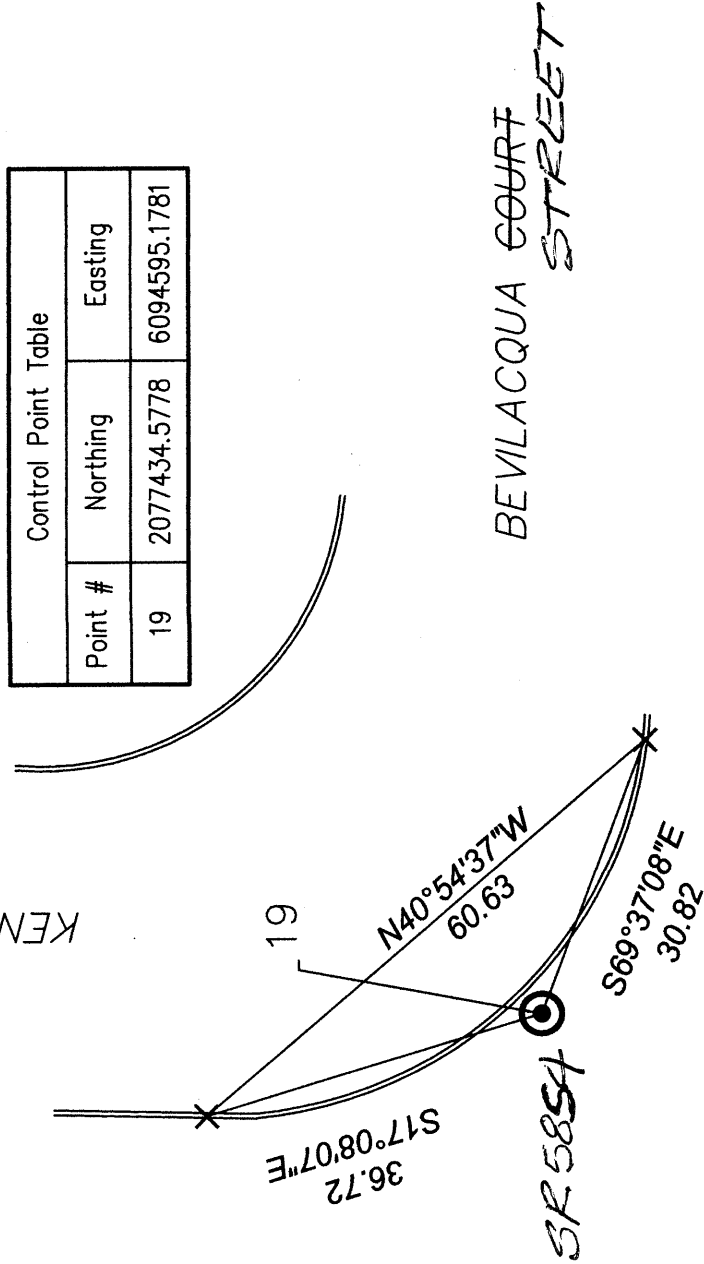
County Surveyor

County Surveyor's Comment





KENT AVENUE



Control Point Table		
Point #	Northing	Easting
19	2077434.5778	6094595.1781

LEGEND

- MONUMENT
- PK NAIL & WASHER
- × SAW CUT-X