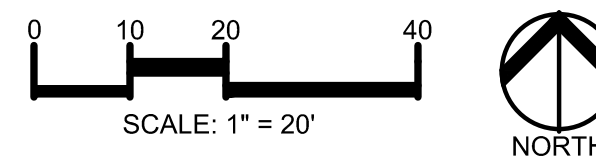
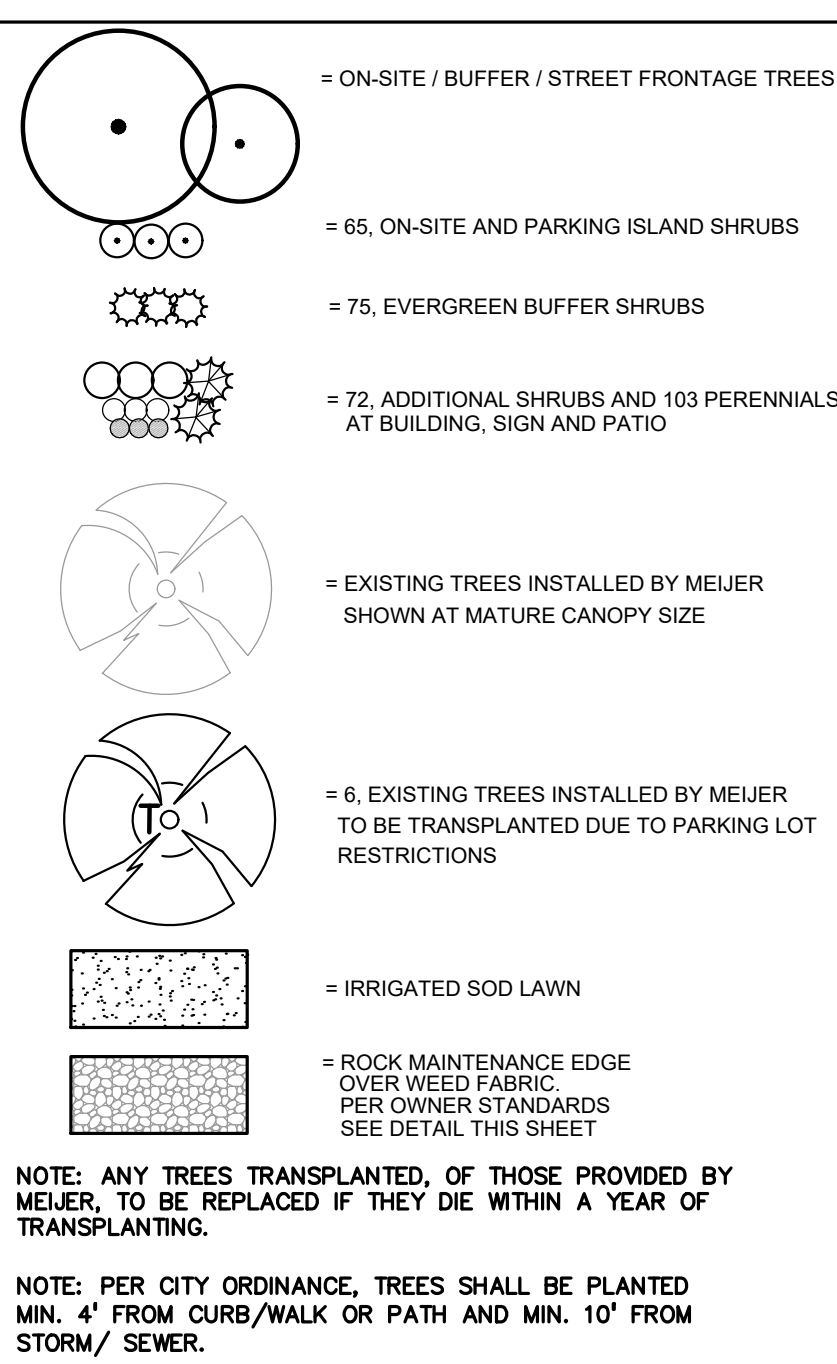


STATE ROAD 32

KEY



GENERAL PLANTING NOTES:

- LANDSCAPE CONTRACTOR SHALL VISIT SITE, INSPECT EXISTING SITE CONDITIONS AND REVIEW PROPOSED PLANTING AND RELATED WORK. IN CASE OF DISCREPANCY BETWEEN PLAN AND PLANT LIST, PLAN SHALL GOVERN QUANTITIES. CONTACT LANDSCAPE ARCHITECT WITH ANY CONCERNS.
- CONTRACTOR SHALL VERIFY LOCATIONS OF ALL ON SITE UTILITIES PRIOR TO BEGINNING CONSTRUCTION ON HIS/HER PHASE OF WORK. ELECTRIC, GAS, TELEPHONE, CABLE TELEVISION MAY BE LOCATED BY CALLING MISS DIG 1-800-482-7171. ANY DAMAGE OR INTERRUPTION OF SERVICES SHALL BE THE RESPONSIBILITY OF CONTRACTOR. CONTRACTOR SHALL COORDINATE ALL RELATED ACTIVITIES WITH OTHER TRADES ON THE JOB AND SHALL REPORT ANY UNACCEPTABLE JOB CONDITIONS TO OWNER'S REPRESENTATIVE PRIOR TO COMMENCING.
- CONTRACTOR IS RESPONSIBLE FOR VERIFYING ALL QUANTITIES SHOWN ON LANDSCAPE PLAN PRIOR TO PRICING THE WORK.
- THE OWNER'S REPRESENTATIVE RESERVES THE RIGHT TO REJECT ANY PLANT MATERIAL NOT MEETING SPECIFICATIONS.
- ALL SINGLE STEM SHADE TREES TO HAVE STRAIGHT TRUNKS AND SYMMETRICAL CROWNS.
- ALL SINGLE TRUNK SHADE TREES TO HAVE A CENTRAL LEADER; TREES WITH FORKED OR IRREGULAR TRUNKS WILL NOT BE ACCEPTED.
- ALL MULTI STEM TREES SHALL BE HEAVILY BRANCHED AND HAVE SYMMETRICAL CROWNS. ONE SIDED TREES OR THOSE WITH THIN OR OPEN CROWNS SHALL NOT BE ACCEPTED.
- ALL EVERGREEN TREES SHALL BE HEAVILY BRANCHED AND FULL TO THE GROUND, SYMMETRICAL IN SHAPE AND NOT SHEARED FOR THE LAST FIVE GROWING SEASONS.
- ALL TREES TO HAVE CLAY OR CLAY LOAM BALLS, TREES WITH SAND BALLS WILL BE REJECTED.
- NO MACHINERY IS TO BE USED WITHIN THE DRIP LINE OF EXISTING TREES. HAND GRADE ALL LAWN AREAS WITHIN THE DRIP LINE OF EXISTING TREES.
- ALL TREE LOCATIONS SHALL BE STAKED BY LANDSCAPE CONTRACTOR AND ARE SUBJECT TO THE APPROVAL OF THE LANDSCAPE ARCHITECT PRIOR TO INSTALLATION OF THE PLANT MATERIAL.
- IT IS MANDATORY THAT POSITIVE DRAINAGE IS PROVIDED AWAY FROM ALL BUILDINGS.
- ALL PLANTING BEDS SHALL RECEIVE 3" SHREDDED HARDWOOD BARK MULCH WITH PRE EMERGENT, SEE SPECIFICATIONS. SHREDDED PALETTE AND DYED MULCH WILL NOT BE ACCEPTED.
- ALL LANDSCAPED AREAS SHALL RECEIVE 3" COMPACTED TOPSOIL.
- SEE SPECIFICATIONS FOR ADDITIONAL COMMENTS, REQUIREMENTS, PLANTING PROCEDURES AND WARRANTY STANDARDS.

LANDSCAPE CALCULATIONS:
PER CITY OF WESTFIELD ZONING ORDINANCE
BUSINESS ZONE-MAPLE KNOLL PUD

ON-SITE AND STREET FRONTAGE LANDSCAPE:
REQUIRED: 10 SHADE TREES, 10 ORN/EGV TREE, AND 25 SHRUBS PER 1 ACRE

2 ACRES * 10 = 20 SHADE TREES
2 ACRES * 10 = 20 ORN/EGV TREES
2 ACRES * 25 = 50 SHRUBS

PROVIDED: 6 EXISTING/TRANSPLANTED TREES ADJ. TO SPRINGMILL RD., 14 SHADE TREES, 20 ORN. TREES, AND 65 ON-SITE/ PARKING ISLAND SHRUBS

BUFFER YARD LANDSCAPE - WEST AND NORTH:
REQUIRED: 1 TREE AND 5 EVG. SHRUBS/ 30 LF

WEST: 232/ 30 = 8 TREES AND 39 EVG. SHRUBS
NORTH: 205/ 30 = 7 TREES AND 35 EVG. SHRUBS

PROVIDED: 6 EXISTING/TRANSPLANTED TREES, 4 TREES AND 40 EVG. SHRUBS
NORTH: 11 EXISTING TREES BY MEIJER AND 35 EVG. SHRUBS

INTERIOR PARKING AREA LANDSCAPE:

REQUIRED: FOR PARKING AREAS OF 50 OR MORE, 10% OF PARKING AREA TO BE ISLANDS WITH MIN. OF 1 TREE AND 4 SHRUBS PER ISLAND;
23,255 SF PARKING AREA * 10% = 2,326 SF PARKING ISLANDS

PROVIDED: 2,710 SF LANDSCAPE ISLANDS WITH MIN. OF 1 TREE AND MIN. OF 4 SHRUBS PER AREA.

TRAIL CORRIDOR PLANTINGS AT STATE ROAD 32:

REQUIRED: LANDSCAPE AREA WITH 3 SHADE TREES, 1 ORN, PER 100 LF. (40' MAX. AND 15' MIN. SPACING)

PROVIDED: EXISTING TREES PREVIOUSLY INSTALLED BY MEIJER ADJ. TO STATE RD. 32

MECHANICAL SCREENING:

REQUIRED: COMPLETELY SCREEN MECHANICAL EQUIPMENT WITH SOLID EVERGREEN SCREEN OR WALL

PROVIDED: TALL EVG. AND DEC. SHRUBS

PROPOSED PLANT LIST

DECIDUOUS SHADE TREE PLANT LIST:

QUANTITY	KEY SYMBOL	COMMON NAME	SCIENTIFIC NAME	SIZE	SPEC
6	AR2.5	Scarlet Sentinel Maple	<i>Acer rubrum 'Scarson'</i> (upright vase shape)	2.5' Cal.	B&B
4	GT2.5	Street Keeper Honeylocust	<i>Gleditsia triacanthos 'Draves'</i> PP 21698	2.5' Cal.	B&B
4	TB2.5	Boulevard Linden	<i>Tilia americana 'Boulevard'</i>	2.5' Cal.	B&B
14	TOTAL DEC.	(& 6 TRANSPLANTED TREES AT SPRINGMILL RD. REPLACE IN LIKE IF DIES DURING CONST)			

ORNAMENTAL TREES PLANT LIST:

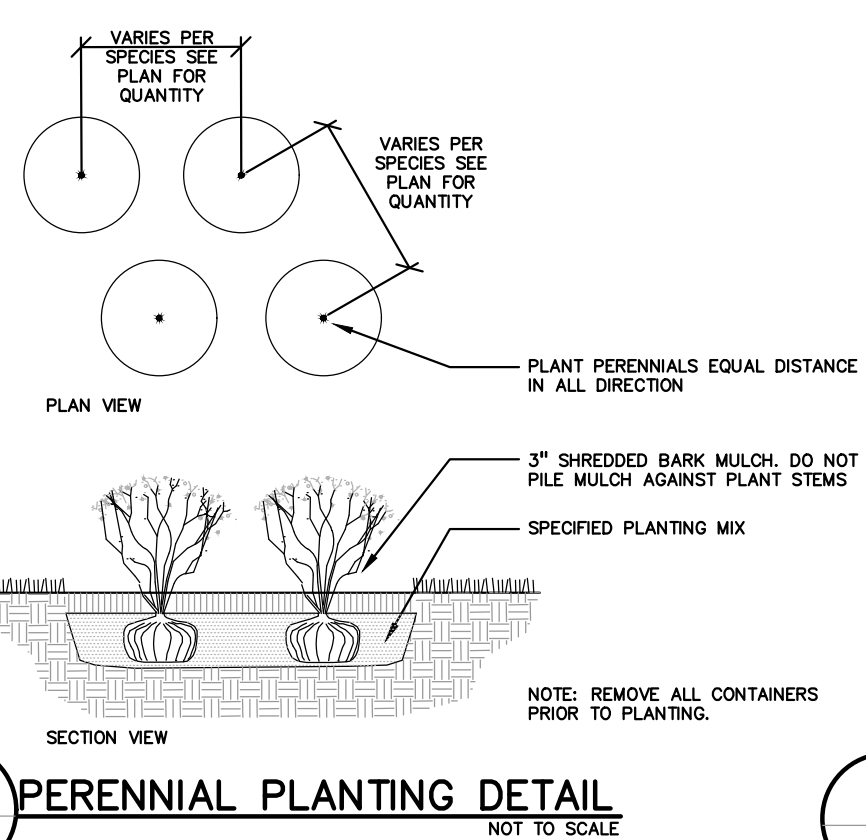
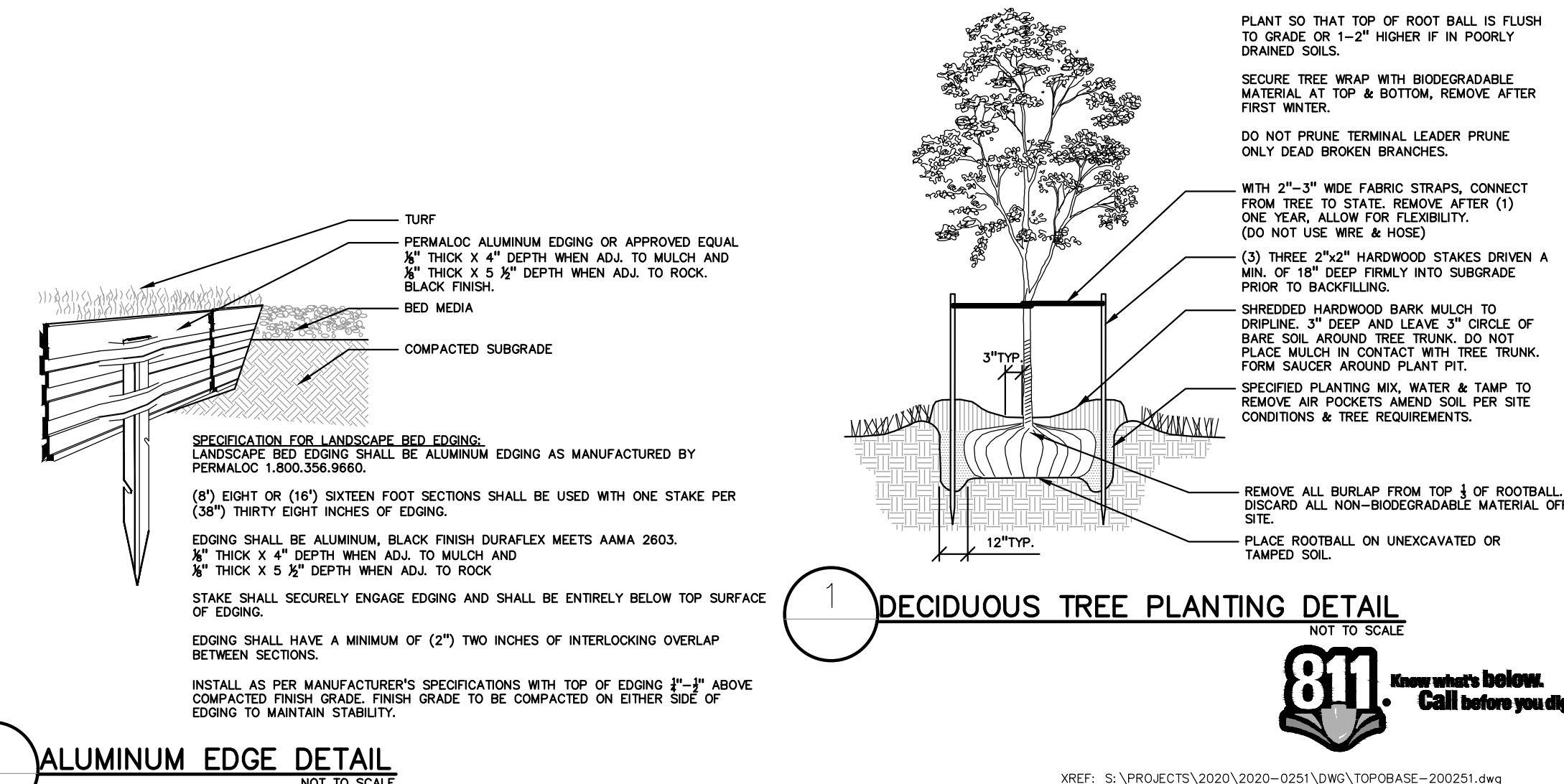
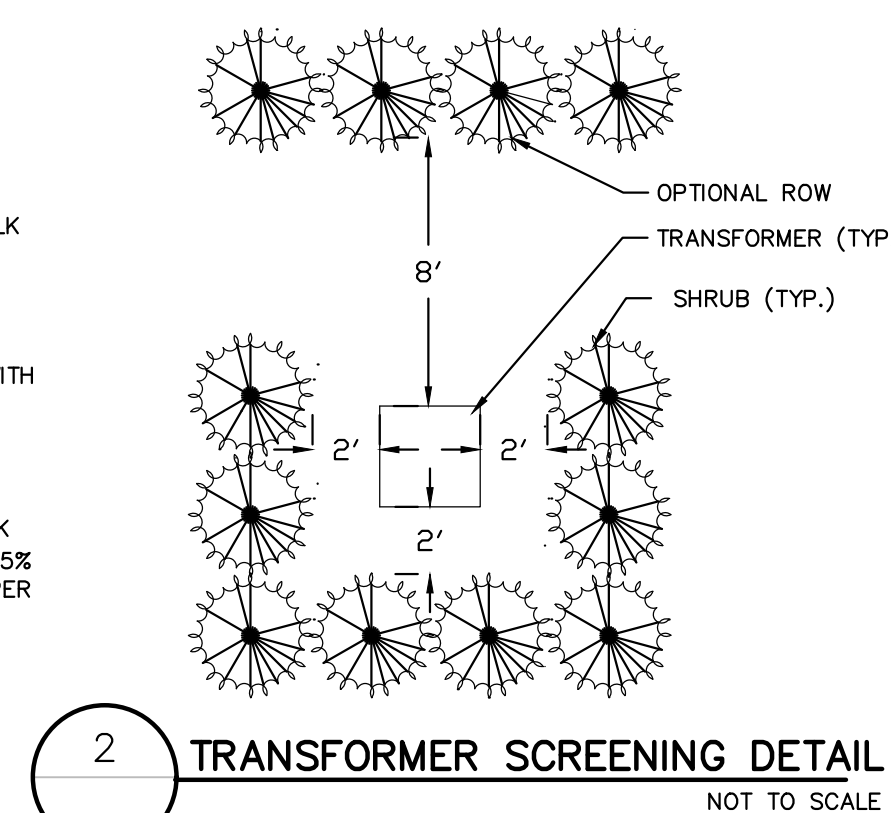
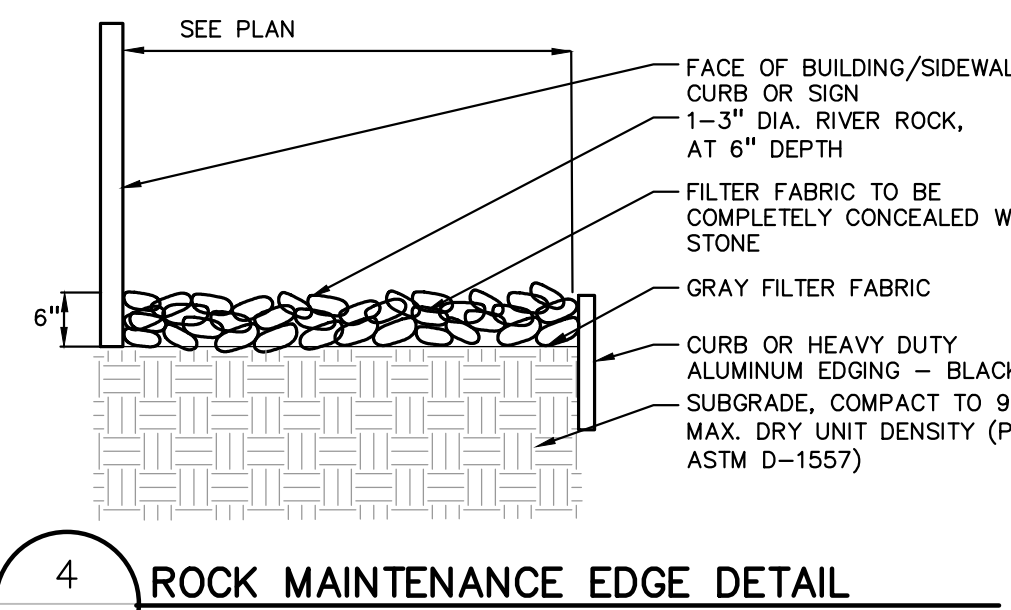
QUANTITY	KEY SYMBOL	COMMON NAME	SCIENTIFIC NAME	SIZE	SPEC
4	CC2	Ace of Hearts Redbud-dwarf	<i>Cercis canadensis 'Ace of Hearts'</i>	2' Cal.	B&B
13	MM2	Marilee Crabapple	<i>Malus 'Marilee'</i> fruitless	2' Cal.	B&B
3	MJ2	Red Jewel Crabapple	<i>Malus 'Red Jewel'</i>	2' Cal.	B&B
20	TOTAL ORN.				

SHRUB PLANT LIST:

QUANTITY	KEY SYMBOL	COMMON NAME	SCIENTIFIC NAME	SIZE	SPEC
3	DG24	Dwarf Slender Deutzia	<i>Deutzia gracilis 'Nikko'</i>	24" Ht.	Cont.
20	EG24	Green Lane Euonymus	<i>Euonymus fortunei 'Green Lane'</i>	24" Ht.	Cont.
16	HA30	Annabelle Hydrangea	<i>Hydrangea arborescens 'Annabelle'</i>	30" Ht.	Cont.
12	HP30	Quick Fire Hydrangea	<i>Hydrangea paniculata 'Little Quick Fire'</i>	30" Ht.	Cont.
9	IV24	Little Henry's Sweetspire	<i>Itea virginica 'Little Henry'</i>	24" Ht.	Cont.
12	JH6	Hetz Columnar Juniper	<i>Juniperus chinensis 'Hetzl Columnaris'</i>	6' Ht.	B&B
1	PA30	Bird's Nest Spruce	<i>Picea abies 'Nidiformis'</i>	30" Ht.	Cont.
22	PF24	Abbotswood Potentilla	<i>Potentilla fruticosa 'Abbotswood'</i>	24" Ht.	Cont.
26	RA24	Gro Low Sumac	<i>Rhus aromatica 'Gro-Low'</i>	24" Ht.	Cont.
19	RK18	Red Drift Groundcover Rose	<i>Rosa 'Meigalpio'</i>	18" Ht.	Cont.
6	SP30	Miss Kim Lilac	<i>Syringa patula 'Miss Kim'</i>	30" Ht.	Cont.
55	TM24	Dense Yew	<i>Taxus x media 'Densiformis'</i>	24" Ht.	Cont.
11	VC36	Korean Spice Viburnum	<i>Viburnum carlesii 'Compacta'</i>	36" Ht.	Cont.
212	TOTAL SHRUB				

PERENNIAL PLANT LIST:

QUANTITY	KEY SYMBOL	COMMON NAME	SCIENTIFIC NAME	SIZE	SPEC
17	CA	Feather Reed Grass	<i>Calamagrostis x acutiflora 'Karl Foerster'</i>	1 Gal.	Cont.
17	EP	PowWow White Coneflower	<i>Echinacea purpurea 'PowWow White'</i>	1 Gal.	Cont.
24	GS	Cranebill Geranium	<i>Geranium sanguineum</i>	1 Gal.	Cont.
29	NF	Walker's Low Catmint	<i>Nepeta x faassenii 'Walker's Low'</i>	1 Gal.	Cont.
16	PA	Dwarf Fountain Grass	<i>Pennisetum alopecuroides 'Red Head'</i>	1 Gal.	Cont.
103	TOTAL PER.				



NOTE: VERIFY TREE LOCATION, TREE TO BE TRANSPLANTED ALONG SPRINGMILL ROAD, PER CITY GUIDANCE, FOR NEW SIGN AND CLEAR VISION

SIGN, WITH 12" WIDE ROCK MAINTENANCE EDGE, SEE DETAIL THIS SHEET.

BIKE RACK

OUTDOOR PATIO

TRANSFORMER SCREENING, SEE DETAIL THIS SHEET, NO PLANTS TO BLOCK ACCESS OR DOORS TO TRANSFORMER, SHIFT PLANTS AS NECESSARY, TYP.

(6) EXISTING TREES ALONG SPRINGMILL RD TO BE TRANSPLANTED APPROX. 4.5' WEST INTO EASEMENT, AS SHOWN, CITY APPROVAL REQUIRED

3' SETBACK FOR CAR OVERHANG (2' MIN.) TO NOT CRUSH SHRUB HEDGE TYP.

18" MIN. WIDE ROCK MAINTENANCE EDGE, TYP. PER OWNER STANDARDS, SEE DETAIL THIS SHEET

ALUMINUM EDGE BETWEEN LAWN/ROCK EDGE AND PLANT BED TYP.

IRRIGATED SOD LAWN TYP.

RESTORE DISTURBED AREA WITH LAWN, TYP. CONTRACTOR TO FIELD VERIFY LIMITS.

RESTORE DISTURBED AREA WITH LAWN, TYP. CONTRACTOR TO FIELD VERIFY LIMITS.

RESTORE DISTURBED AREA WITH LAWN, TYP. CONTRACTOR TO FIELD VERIFY LIMITS.

RESTORE DISTURBED AREA WITH LAWN, TYP. CONTRACTOR TO FIELD VERIFY LIMITS.

RESTORE DISTURBED AREA WITH LAWN, TYP. CONTRACTOR TO FIELD VERIFY LIMITS.

RESTORE DISTURBED AREA WITH LAWN, TYP. CONTRACTOR TO FIELD VERIFY LIMITS.

RESTORE DISTURBED AREA WITH LAWN, TYP. CONTRACTOR TO FIELD VERIFY LIMITS.

RESTORE DISTURBED AREA WITH LAWN, TYP. CONTRACTOR TO FIELD VERIFY LIMITS.

RESTORE DISTURBED AREA WITH LAWN, TYP. CONTRACTOR TO FIELD VERIFY LIMITS.

RESTORE DISTURBED AREA WITH LAWN, TYP. CONTRACTOR TO FIELD VERIFY LIMITS.

RESTORE DISTURBED AREA WITH LAWN, TYP. CONTRACTOR TO FIELD VERIFY LIMITS.

RESTORE DISTURBED AREA WITH LAWN, TYP. CONTRACTOR TO FIELD VERIFY LIMITS.

RESTORE DISTURBED AREA WITH LAWN, TYP. CONTRACTOR TO FIELD VERIFY LIMITS.

RESTORE DISTURBED AREA WITH LAWN, TYP. CONTRACTOR TO FIELD VERIFY LIMITS.

RESTORE DISTURBED AREA WITH LAWN, TYP. CONTRACTOR TO FIELD VERIFY LIMITS.

RESTORE DISTURBED AREA WITH LAWN, TYP. CONTRACTOR TO FIELD VERIFY LIMITS.

RESTORE DISTURBED AREA WITH LAWN, TYP. CONTRACTOR TO FIELD VERIFY LIMITS.

RESTORE DISTURBED AREA WITH LAWN, TYP. CONTRACTOR TO FIELD VERIFY LIMITS.

RESTORE DISTURBED AREA WITH LAWN, TYP. CONTRACTOR TO FIELD VERIFY LIMITS.

RESTORE DISTURBED AREA WITH LAWN, TYP. CONTRACTOR TO FIELD VERIFY LIMITS.

RESTORE DISTURBED AREA WITH LAWN, TYP. CONTRACTOR TO FIELD VERIFY LIMITS.



PANDA EXPRESS, INC.
1683 Walnut Grove Ave.
Rosemead, California
91770
Telephone: 626.799.9698
Facsimile: 626.372.8288

All ideas, designs, arrangement and plans indicated or represented by this drawing are the property of Panda Express Inc. and were created for use on this specific project. None of these ideas, designs, arrangements or plans may be used by or disclosed to any person, firm, or corporation without the written permission of Panda Express Inc.

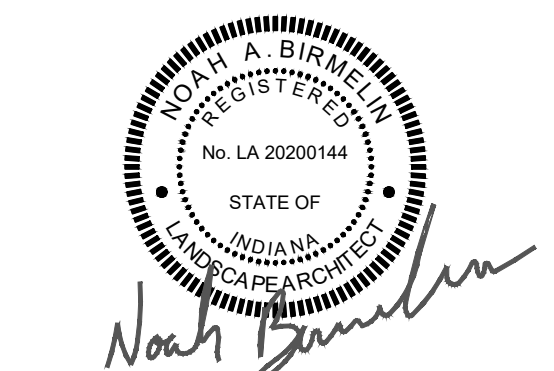
REVISIONS:

ISSUE DATE:

DEVELOPMENT PLAN	02-24-2021
DDP RESUBMITTAL	03-31-2021
DDP RESUBMITTAL	05-26-2021
STATE PERMIT	06-07-2021

DRAWN BY: LGD

PANDA PROJECT #: D8060
CIVIL PROJECT #: 2020-0251



PEA
GROUP

t: 844.813.2949
www.peagroup.com

PANDA EXPRESS

TRUE WARM & WELCOME
SR 32 & SPRING MILL ROAD (MEIJER #319)
WESTFIELD, IN, 46074

LANDSCAPE PLAN

L01.0

SCALE: 1"=20'

TRUE WARM & WELCOME 2300 R4