

TRACT 1909

EDEN TOWNSHIP

ALAMEDA COUNTY, CALIFORNIA

IN UNINCORPORATED TERRITORY IN THE COUNTY OF ALAMEDA

MURRAY & McCORMICK INC.
CIVIL ENGINEERS
SAN LEANDRO, CALIFORNIA

SCALE: 1" = 50' APRIL, 1959

BASIS OF BEARINGS:

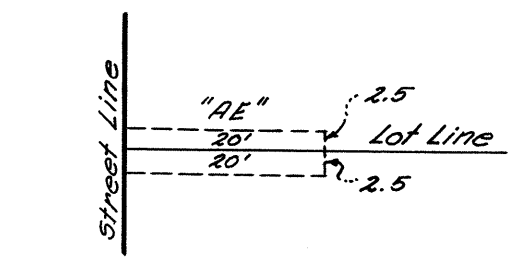
The center line of Ewing Road northerly of the intersection of Vineyard Road and Almond Road was taken as N17°26'W.

LEGEND:

Existing monuments shown thus: .
Concrete monuments with cast iron frames and covers to be installed shown thus: .
Anchor Easement noted thus: (See detail) "AE"

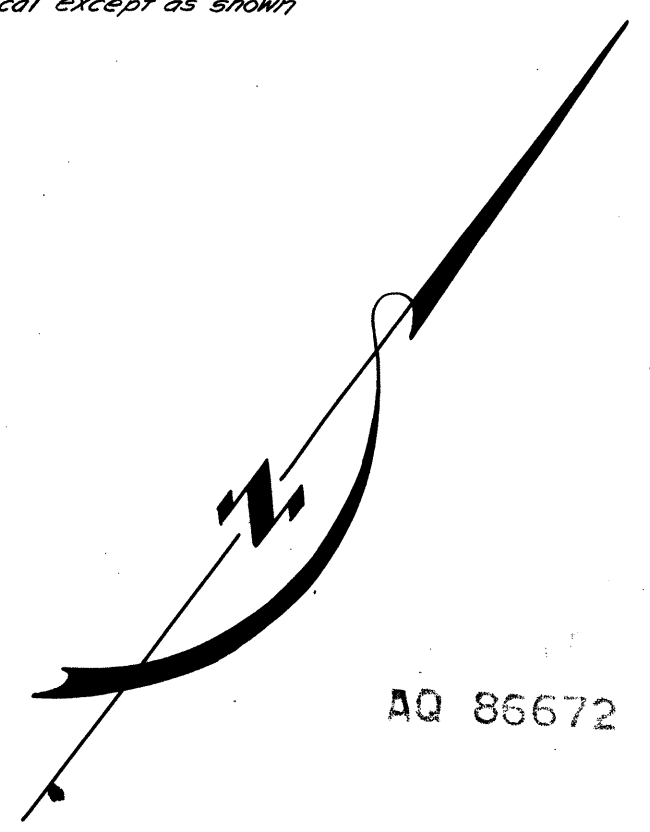
BUILDING SET-BACK LINES:

Building set-back lines to be as required by the Ordinance Code of the County of Alameda Title 9, Chapter 2.



ANCHOR EASEMENT DETAIL

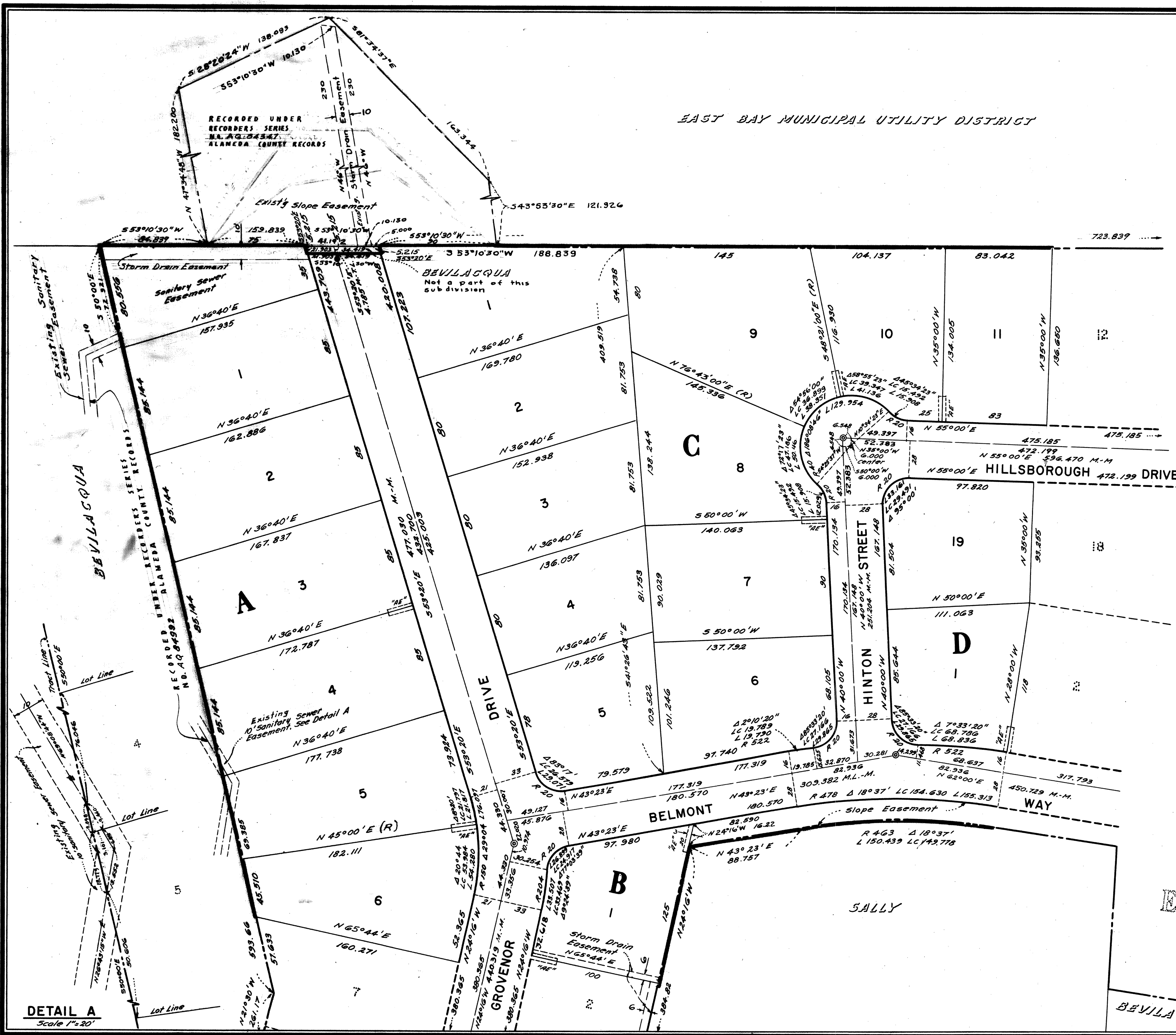
Typical except as shown



AQ 86672

SHEET NO. 3 OF 4 SHEETS

EAST BAY MUNICIPAL UTILITY DISTRICT



DETAIL A
Scale 1"=20'

TR
1909