

EXHAUST FAN INFORMATION – Job#4127861

FAN UNIT NO.	TAG	FAN UNIT MODEL #	CFM	ESP.	RPM	H.P.	B.H.P.	Ø	VOLT	FLA	DISCHARGE VELOCITY	WEIGHT (LBS.)	SDNES
1		EABDU18	2975	1.250	1156	2.000	1.1840	3	208	5.9	687 FPM	184	14.3
2		EABDU18	2975	1.250	1156	2.000	1.1840	3	208	5.9	687 FPM	184	14.3
3		EABDCR7	450	0.250	1128	0.250	0.0850	1	115	4.8		90	6.3

MUA FAN INFORMATION – Job#4127861

FAN UNIT NO.	TAG	FAN UNIT MODEL #	BLOWER	HOUSING	MIN CFM	DESIGN CFM	ESP.	RPM	H.P.	B.H.P.	Ø	VOLT	FLA	MCA	MDCP	WEIGHT (LBS.)	SDNES
4		EA3-D.500-G18	G18-PB	A3-D.500	3500	4760	0.750	739	3.000	1.9810	3	208	9.5	13.1A	20A	876	12.2

GAS FIRED MAKE-UP AIR UNIT(S)

FAN UNIT NO.	TAG	INPUT BTUs	OUTPUT BTUs	TEMP. RISE	REQUIRED INPUT GAS PRESSURE	GAS TYPE	BURNER EFFICIENCY(%)
4		518789	477286	100 deg F	7 in. w.c. – 14 in. w.c.	Natural	92

FAN OPTIONS

FAN UNIT NO.	TAG	OPTION (Qty. – Descr.)
1		1 – Grease Box 1 – Upblast Fan Wheel Access Port
2		1 – Grease Box 1 – Upblast Fan Wheel Access Port
3		1 – I 15-BDD Damper 1 – AC Interlock Relay – 24VAC Coil 1 – Low Fire Start
4		1 – Inlet Pressure Gauge, 0-35" 1 – Manifold Pressure Gauge, -5 to 15" wc 1 – Motorized Backdraft Damper for A3-D Housing 1 – VAV Package w/ Manual Control (VFD Included) 1 – VFD factory mounted and wired in commercial control vestibule for tempered supply fan.

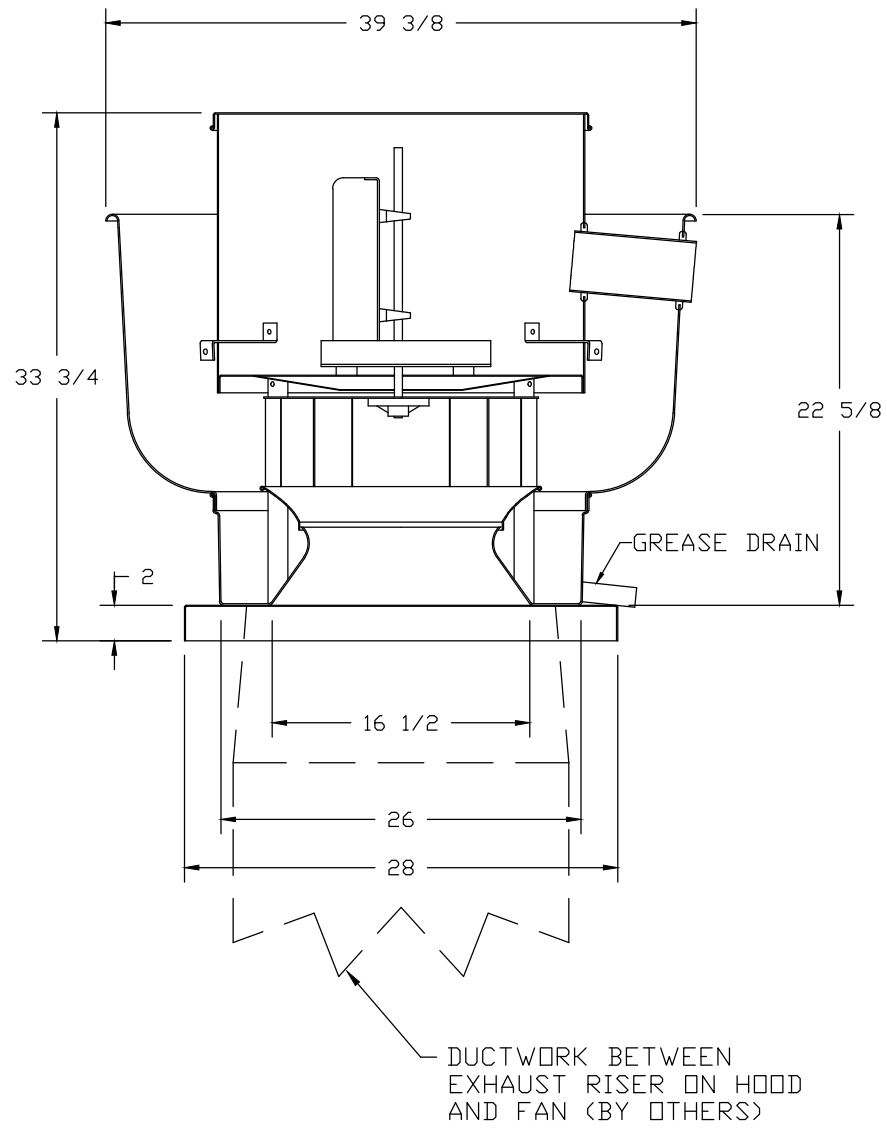
FAN ACCESSORIES

FAN UNIT NO.	TAG	EXHAUST				SUPPLY			
		GREASE CUP	GRAVITY DAMPER	WALL MOUNT	SIDE DISCHARGE	GRAVITY DAMPER	MOTORIZED DAMPER	WALL MOUNT	
1		YES							
2		YES							
3			YES						
4							YES		

CURB ASSEMBLIES

NO.	ON FAN	WEIGHT	ITEM	SIZE	
1	# 1	38 LBS	Curb	26.500"W x 26.500"L x 24.000"H	Vented Hinged
2	# 2	38 LBS	Curb	26.500"W x 26.500"L x 24.000"H	Vented Hinged
3	# 3	18 LBS	Curb	19.500"W x 19.500"L x 12.000"H	
4	# 4	84 LBS	Curb	35.000"W x 84.000"L x 20.000"H	Insulated

FANS #1, #2 – FABDU18 EXHAUST FAN



FEATURES:

- ROOF MOUNTED FANS
- RESTAURANT MODEL
- UL705 AND UL762 AND ULC-S645
- AMCA SOUND AND AIR CERTIFIED
- WIRING FROM MOTOR TO DISCONNECT SWITCH
- WEATHERPROOF DISCONNECT
- HIGH HEAT OPERATION 300°F (149°C)
- GREASE CLASSIFICATION TESTING

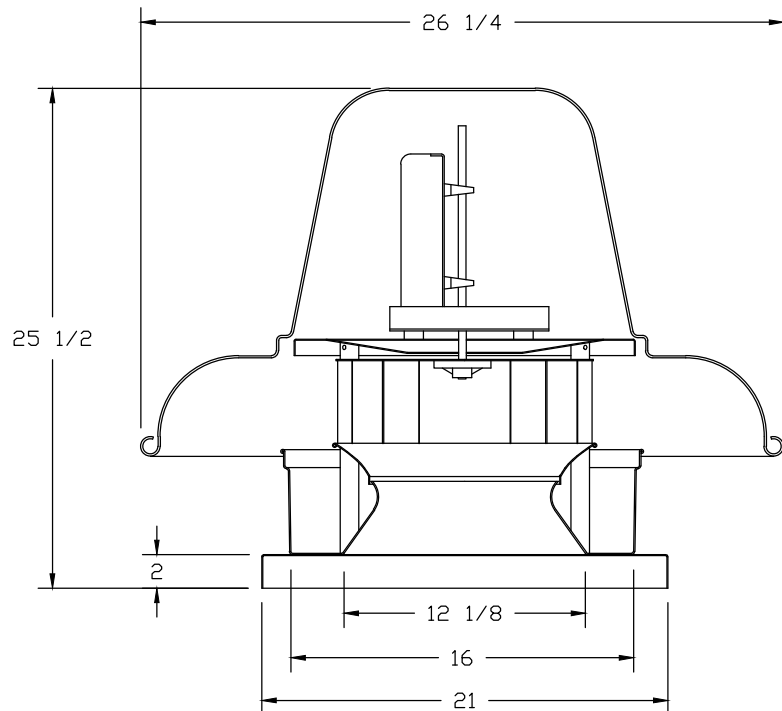
NORMAL TEMPERATURE TEST
EXHAUST FAN MUST OPERATE CONTINUOUSLY WHILE EXHAUSTING AIR AT 300°F (149°C) UNTIL ALL FAN PARTS HAVE REACHED THERMAL EQUILIBRIUM, AND WITHOUT ANY DETERIORATING EFFECTS TO THE FAN WHICH WOULD CAUSE UNSAFE OPERATION.

ABNORMAL FLARE-UP TEST
EXHAUST FAN MUST OPERATE CONTINUOUSLY WHILE EXHAUSTING BURNING GREASE VAPORS AT 600°F (316°C) FOR A PERIOD OF 15 MINUTES WITHOUT THE FAN BECOMING DAMAGED TO ANY EXTENT THAT COULD CAUSE AN UNSAFE CONDITION.

OPTIONS

- GREASE BOX
- UPBLAST FAN WHEEL ACCESS PORT.

FAN #3 FABDCR7 – EXHAUST FAN

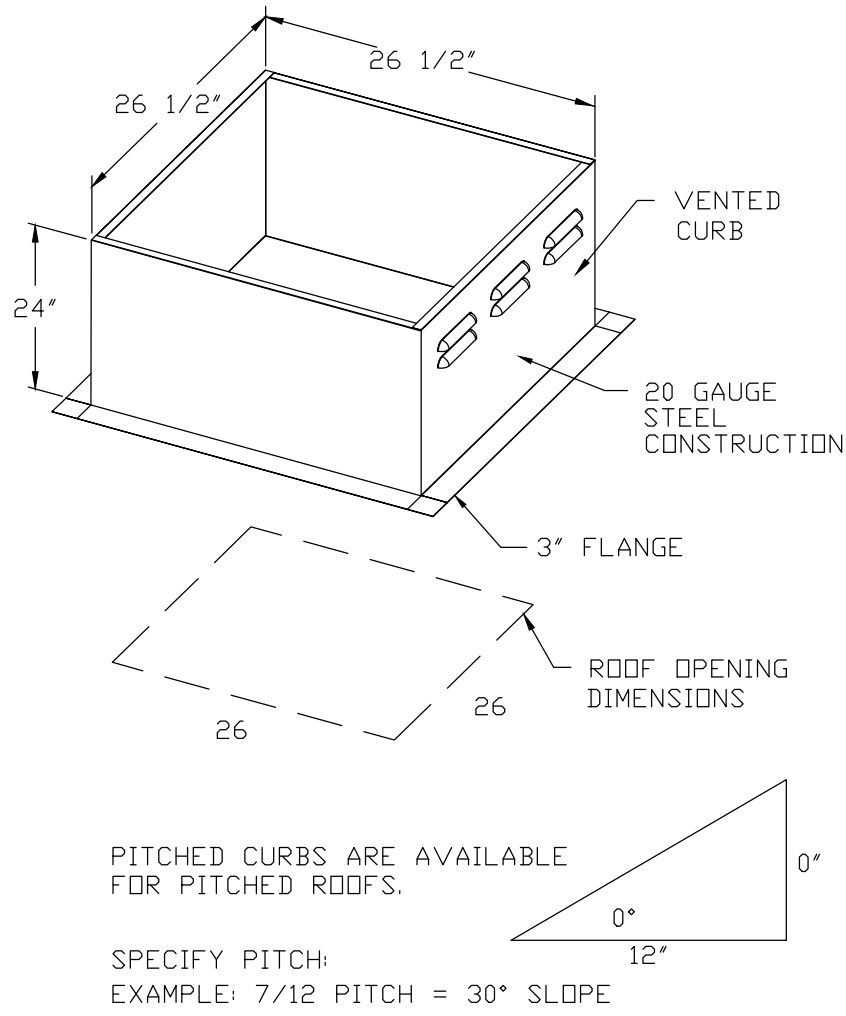


FEATURES:

- ROOF MOUNTED FANS
- UL705
- AMCA SOUND AND AIR CERTIFIED
- WIRING FROM MOTOR TO DISCONNECT SWITCH
- DISCONNECT SWITCH
- STANDARD BIRD SCREEN

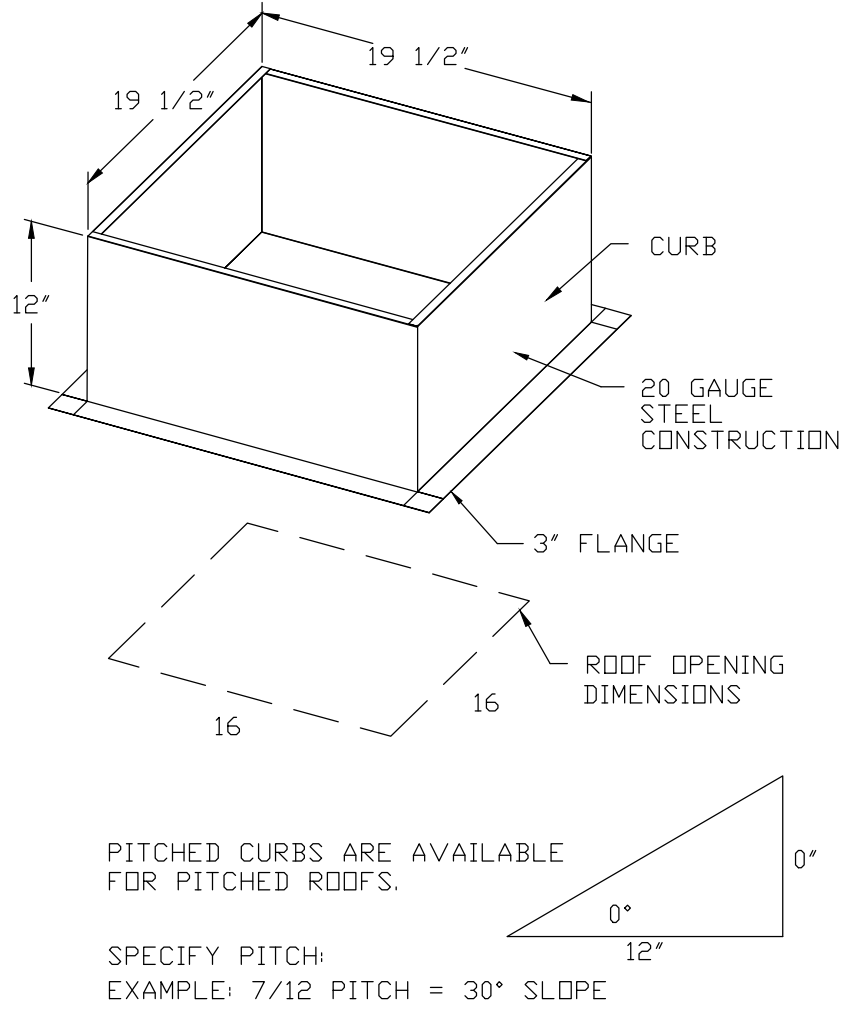
OPTIONS

- I 15-BDD DAMPER.



PITCHED CURBS ARE AVAILABLE FOR PITCHED ROOFS.

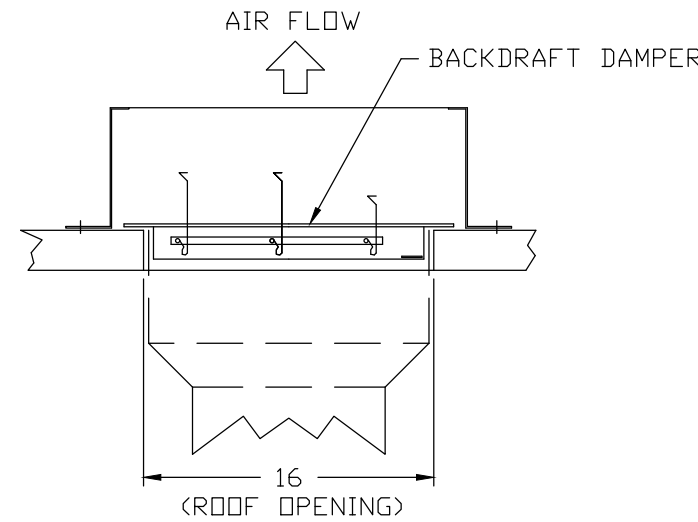
SPECIFY PITCH:
EXAMPLE: 7/12 PITCH = 30° SLOPE



PITCHED CURBS ARE AVAILABLE FOR PITCHED ROOFS.

SPECIFY PITCH:
EXAMPLE: 7/12 PITCH = 30° SLOPE

BACKDRAFT DAMPER INSTALLATION



REVISIONS

DESCRIPTION	DATE
Δ	
Δ	
Δ	
Δ	

www.captiveair.com

www.captiveair.com

reg8@captliveair.com

REVISIONS

DESCRIPTION	DATE
Δ	
Δ	
Δ	
Δ	

REVISIONS

DESCRIPTION	DATE
Δ	
Δ	
Δ	
Δ	

REVISIONS

DESCRIPTION	DATE
Δ	
Δ	
Δ	
Δ	

REVISIONS

DESCRIPTION	DATE
Δ	
Δ	
Δ	
Δ	

REVISIONS

DESCRIPTION	DATE
Δ	
Δ	
Δ	
Δ	

REVISIONS

DESCRIPTION	DATE
Δ	
Δ	
Δ	
Δ	

REVISIONS

DESCRIPTION	DATE
Δ	
Δ	
Δ	
Δ	

REVISIONS

DESCRIPTION	DATE
Δ	
Δ	
Δ	
Δ	

REVISIONS

DESCRIPTION	DATE
Δ	
Δ	
Δ	
Δ	

REVISIONS

DESCRIPTION	DATE
Δ	
Δ	
Δ	
Δ	

REVISIONS

DESCRIPTION	DATE
Δ	
Δ	
Δ	
Δ	

REVISIONS

DESCRIPTION	DATE
Δ	
Δ	
Δ	
Δ	

REVISIONS

DESCRIPTION	DATE
Δ	
Δ	
Δ	
Δ	

REVISIONS

DESCRIPTION	DATE
Δ	
Δ	
Δ	
Δ	

REVISIONS

DESCRIPTION	DATE
Δ	
Δ	
Δ	
Δ	

REVISIONS

DESCRIPTION	DATE
Δ	
Δ	
Δ	
Δ	

REVISIONS

DESCRIPTION	DATE
Δ	
Δ	
Δ	
Δ	

REVISIONS

DESCRIPTION	DATE
Δ	
Δ	
Δ	
Δ	

REVISIONS

DESCRIPTION	DATE
Δ	
Δ	
Δ	
Δ	

REVISIONS

DESCRIPTION	DATE
Δ	
Δ	
Δ	
Δ	

REVISIONS

DESCRIPTION	DATE
Δ	
Δ	
Δ	
Δ	

REVISIONS

DESCRIPTION	DATE
Δ	
Δ	
Δ	
Δ	

REVISIONS

DESCRIPTION	DATE
Δ	
Δ	
Δ	
Δ	

REVISIONS

DESCRIPTION	DATE
Δ	
Δ	
Δ	
Δ	

REVISIONS

DESCRIPTION	DATE
Δ	
Δ	
Δ	
Δ	

REVISIONS

DESCRIPTION	DATE
Δ	
Δ	
Δ	
Δ	

REVISIONS

DESCRIPTION	DATE
Δ	
Δ	
Δ	
Δ	

REVISIONS

DESCRIPTION	DATE
Δ	
Δ	
Δ	
Δ	

REVISIONS

DESCRIPTION	DATE
Δ	
Δ	
Δ	
Δ	

REVISIONS

DESCRIPTION	DATE
Δ	
Δ	
Δ	
Δ	

REVISIONS

DESCRIPTION	DATE
Δ	
Δ	
Δ	
Δ	

REVISIONS

DESCRIPTION	DATE
Δ	
Δ	
Δ	
Δ	

REVISIONS

DESCRIPTION	DATE
Δ	
Δ	
Δ	
Δ	

REVISIONS

DESCRIPTION	DATE
Δ	
Δ	
Δ	
Δ	

REVISIONS

DESCRIPTION	DATE
Δ	
Δ	
Δ	
Δ	

REVISIONS

DESCRIPTION	DATE
Δ	
Δ	
Δ	
Δ	

REVISIONS

DESCRIPTION	DATE
Δ	
Δ	
Δ	
Δ	

REVISIONS

DESCRIPTION	DATE
Δ	
Δ	
Δ	
Δ	

REVISIONS

DESCRIPTION	DATE
Δ	
Δ	
Δ	
Δ	

REVISIONS

DESCRIPTION	DATE
Δ	
Δ	
Δ	
Δ	

REVISIONS

DESCRIPTION	DATE
Δ	
Δ	
Δ	
Δ	

REVISIONS

DESCRIPTION	DATE
Δ	
Δ	
Δ	
Δ	

REVISIONS

DESCRIPTION	DATE
Δ	
Δ	
Δ	
Δ	

REVISIONS

DESCRIPTION	DATE
Δ	
Δ	
Δ	
Δ	

REVISIONS

DESCRIPTION	DATE
Δ	
Δ	
Δ	
Δ	

REVISIONS

DESCRIPTION	DATE
Δ	
Δ	
Δ	
Δ	

REVISIONS

DESCRIPTION	DATE
Δ	
Δ	
Δ	
Δ	

REVISIONS

DESCRIPTION	DATE
Δ	
Δ	
Δ	
Δ	

REVISIONS

DESCRIPTION	DATE
Δ	
Δ	
Δ	
Δ	

REVISIONS

DESCRIPTION	DATE
Δ	
Δ	
Δ	
Δ	

REVISIONS

DESCRIPTION	DATE
Δ	
Δ	
Δ	
Δ	

REVISIONS

DESCRIPTION	DATE
Δ	
Δ	
Δ	
Δ	

REVISIONS

DESCRIPTION	DATE
Δ	
Δ	
Δ	
Δ	

REVISIONS

DESCRIPTION	DATE
Δ	
Δ	
Δ	
Δ	

REVISIONS

DESCRIPTION	DATE
Δ	
Δ	
Δ	
Δ	

REVISIONS

DESCRIPTION	DATE
Δ	
Δ	
Δ	
Δ	

REVISIONS

DESCRIPTION	DATE
Δ	
Δ	
Δ	
Δ	

REVISIONS

DESCRIPTION	DATE
Δ	
Δ	
Δ	
Δ	

REVISIONS

DESCRIPTION	DATE
Δ	
Δ	
Δ	
Δ	

REVISIONS

DESCRIPTION	DATE
Δ	
Δ	
Δ	
Δ	

REVISIONS

DESCRIPTION	DATE
Δ	
Δ	
Δ	
Δ	

REVISIONS

DESCRIPTION	DATE
Δ	
Δ	
Δ	
Δ	

REVISIONS

DESCRIPTION	DATE
Δ	
Δ	
Δ	
Δ	

REVISIONS

DESCRIPTION	DATE
Δ	
Δ	
Δ	
Δ	

REVISIONS

DESCRIPTION	DATE
Δ	
Δ	
Δ	
Δ	

REVISIONS

DESCRIPTION	DATE
Δ	
Δ	
Δ	
Δ	

REVISIONS

DESCRIPTION	DATE
Δ	
Δ	
Δ	
Δ	

REVISIONS

DESCRIPTION	DATE
Δ	
Δ	
Δ	
Δ	

REVISIONS

DESCRIPTION	DATE
Δ	
Δ	
Δ	
Δ	

REVISIONS

DESCRIPTION	DATE
Δ	
Δ	
Δ	
Δ	

REVISIONS

DESCRIPTION	DATE
Δ	
Δ	
Δ	
Δ	

REVISIONS

DESCRIPTION	DATE
Δ	
Δ	
Δ	
Δ	

REVISIONS

DESCRIPTION	DATE
Δ	
Δ	
Δ	
Δ	

REVISIONS

DESCRIPTION	DATE
Δ	
Δ	
Δ	
Δ	

REVISIONS

DESCRIPTION	DATE
Δ	
Δ	
Δ	
Δ	

REVISIONS

DESCRIPTION	DATE
Δ	
Δ	
Δ	
Δ	

REVISIONS

DESCRIPTION	DATE
Δ	
Δ	
Δ	
Δ	

REVISIONS

DESCRIPTION	DATE
Δ	
Δ	
Δ	
Δ	

REVISIONS

DESCRIPTION	DATE
Δ	
Δ	
Δ	
Δ	

REVISIONS

DESCRIPTION	DATE
Δ	
Δ	
Δ	
Δ	

REVISIONS

DESCRIPTION	DATE
Δ	
Δ	
Δ	
Δ	

REVISIONS

DESCRIPTION	DATE
Δ	
Δ	
Δ	
Δ	

REVISIONS

DESCRIPTION	DATE
Δ	
Δ	
Δ	