



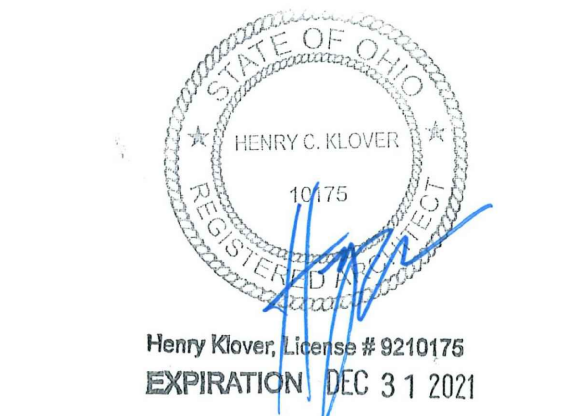
PANDA EXPRESS, INC.
1683 Walnut Grove Ave.
Rosemead, California
91770
Telephone: 626.799.9898
Facsimile: 626.372.8288

All ideas, designs, arrangement and plans indicated or represented by this drawing are the property of Panda Express Inc. and were created for use on this specific project. None of these ideas, designs, arrangements or plans may be used by or disclosed to any person, firm, or corporation without the written permission of Panda Express Inc.

REVISIONS:		

ISSUE DATE:		
1st	BUILDING PERMIT SET	03-29-21

DRAWN BY:	
PANDA PROJECT #: S8-22-D8072	
PANDA STORE #: -	
ARCH PROJECT #: 20044.009	



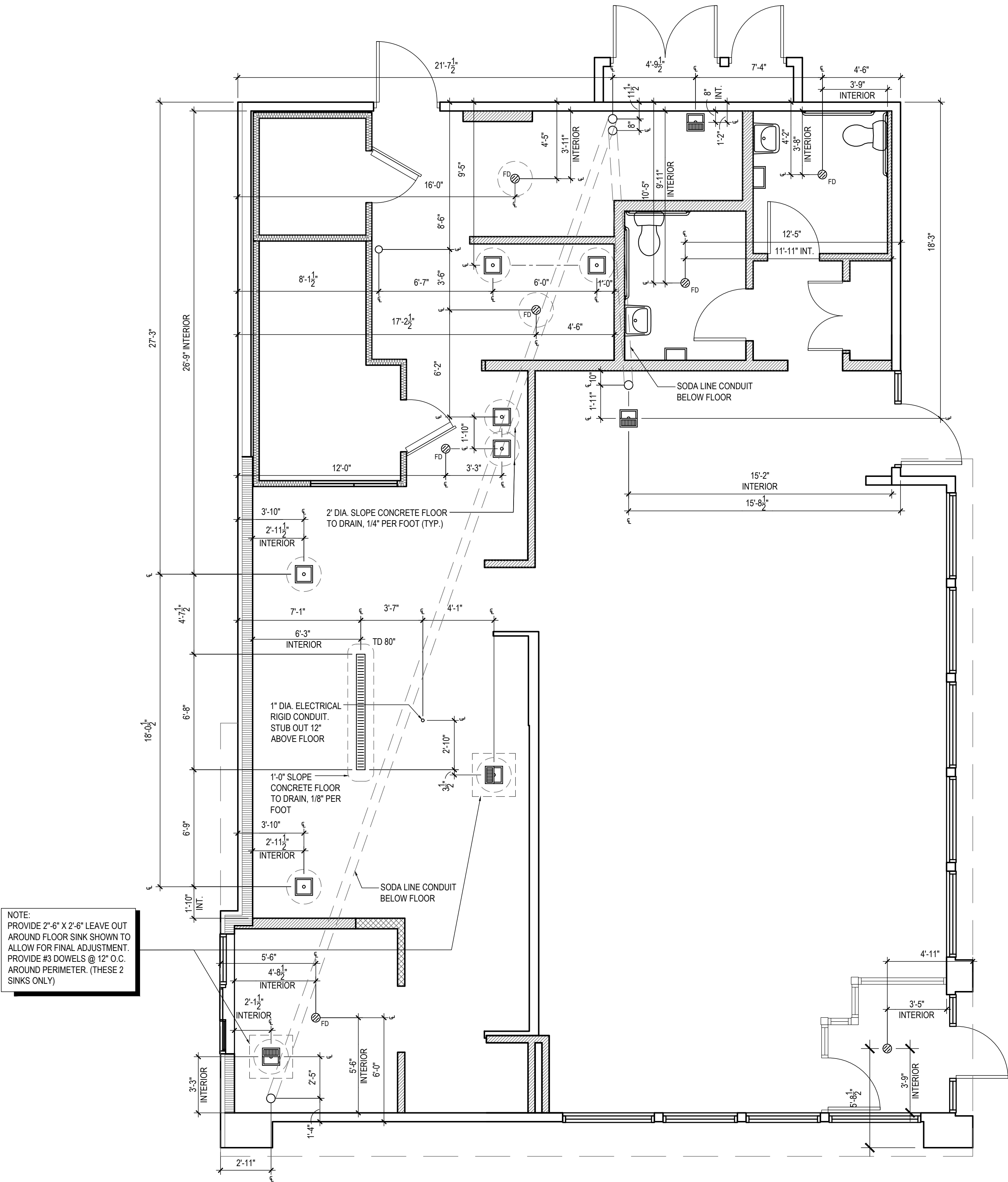
hckloverarchitect
8813 Penrose Lane, Suite 400,
Lenexa, KS 66219
ph: 913.649.8181 • fx: 913.649.1275

PANDA EXPRESS
TRUE WARM & WELCOME
E. KEMPER RD & CENTURY BLVD.
CINCINNATI (SPRINGDALE), OH 45246

A-102

ROUGH - IN PLUMBING PLAN

TRUE WARM & WELCOME 2300 R5



NOTE:
PROVIDE 2"-6" X 2'-6" LEAVE OUT
AROUND FLOOR SINK SHOWN TO
ALLOW FOR FINAL ADJUSTMENT.
PROVIDE #3 DOWELS @ 12" O.C.
AROUND PERIMETER. (THESE 2
SINKS ONLY)

NOT USED 3
Scale= 1 1/2" = 1'-0" A-102

NOT USED 2
Scale= 1 1/2" = 1'-0" A-102

ROUGH - IN PLUMBING PLAN 1
Scale= 1/4" = 1'-0" A-102