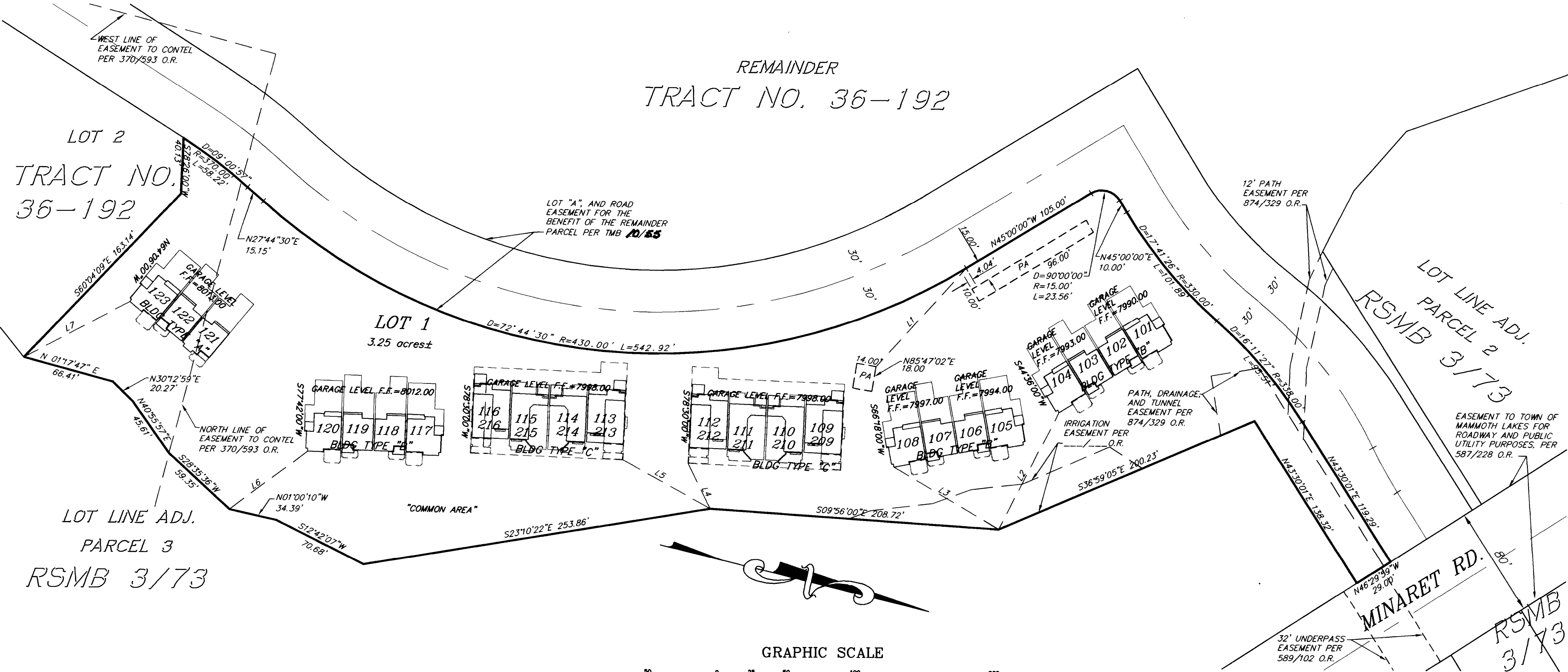


SURVEY TIES

LINE	LENGTH	BEARING
L1	95.79'	S66°31'03"E
L2	94.56'	N76°33'47"W
L3	87.74'	S16°39'44"W
L4	36.13'	N49°50'17"E
L5	71.88'	N15°00'45"E
L6	70.12'	S50°27'52"E
L7	86.17'	S41°42'07"E

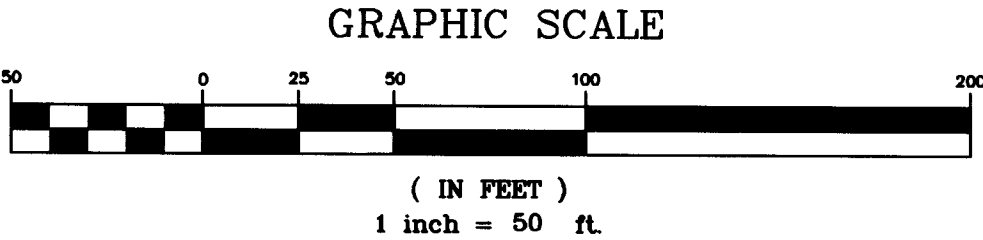
SEE SHEETS 3 AND 4 FOR UNIT PLANS TYPES

NOTE: SURVEY TIES FOR BUILDING TYPES "A",
AND "B" ARE TO THE VERTICAL PROJECTIONS
OF THE INSIDE STUD WALL FACE. SURVEY TIE
TO BUILDINGS TYPE "C" ARE TO THE EXTERIOR
LINE OF THE GARAGE LEVEL.



NOTES: SEE SHEETS 3 AND 4 FOR BUILDING TYPE PLANS.
BUILDING TYPE "C" 1ST LEVEL F.F. ELEVATION =
PARKING LEVEL F.F. ELEVATION + 11.08'.
UPPER ELEVATION LIMITS OF "RESIDENTIAL STORAGE",
"PARKING SPACE(S)", "PARKING AREA", AND "UNASSIGNED
RESIDENTIAL STORAGE AREA" WITHIN THE PARKING LEVEL
= PARKING LEVEL F.F. ELEVATION + 9.33'.
F.F. = FINISHED FLOOR ELEVATION

UNLOCATABLE EASEMENTS
RESERVATIONS TO U.S.A. FOR WATER RIGHTS PER "N"/473 O.R., "O"/548 O.R., AND "S"/79 O.R.
BLANKET EASEMENT TO CONTEL FOR 10' STRIP OVER EXISTING FACILITIES PER 370/593 O.R.
(NOT ON TITLE REPORT)



BENCHMARK:
CHISELED BOX IN TOP OF CONCRETE IN THE NORTH SIDE
OF MERIDIAN 2.50' FROM THE CENTERLINE OF CATCH
BASIN WEST OF THE INTERSECTION OF MERIDIAN AND
MINARET. ELEVATION=7985.76'

CONDOMINIUM PLAN FOR
EVERGREEN
AT SIERRA STAR
PHASE I
TOWN OF MAMMOTH LAKES, MONO COUNTY, CALIFORNIA
BEING A SUBDIVISION OF LOT 1 OF TRACT NO. 36-192A
PER MAP RECORDED IN BOOK 22 OF TRACT MAPS, AT
PAGES 33 THROUGH 33E.