

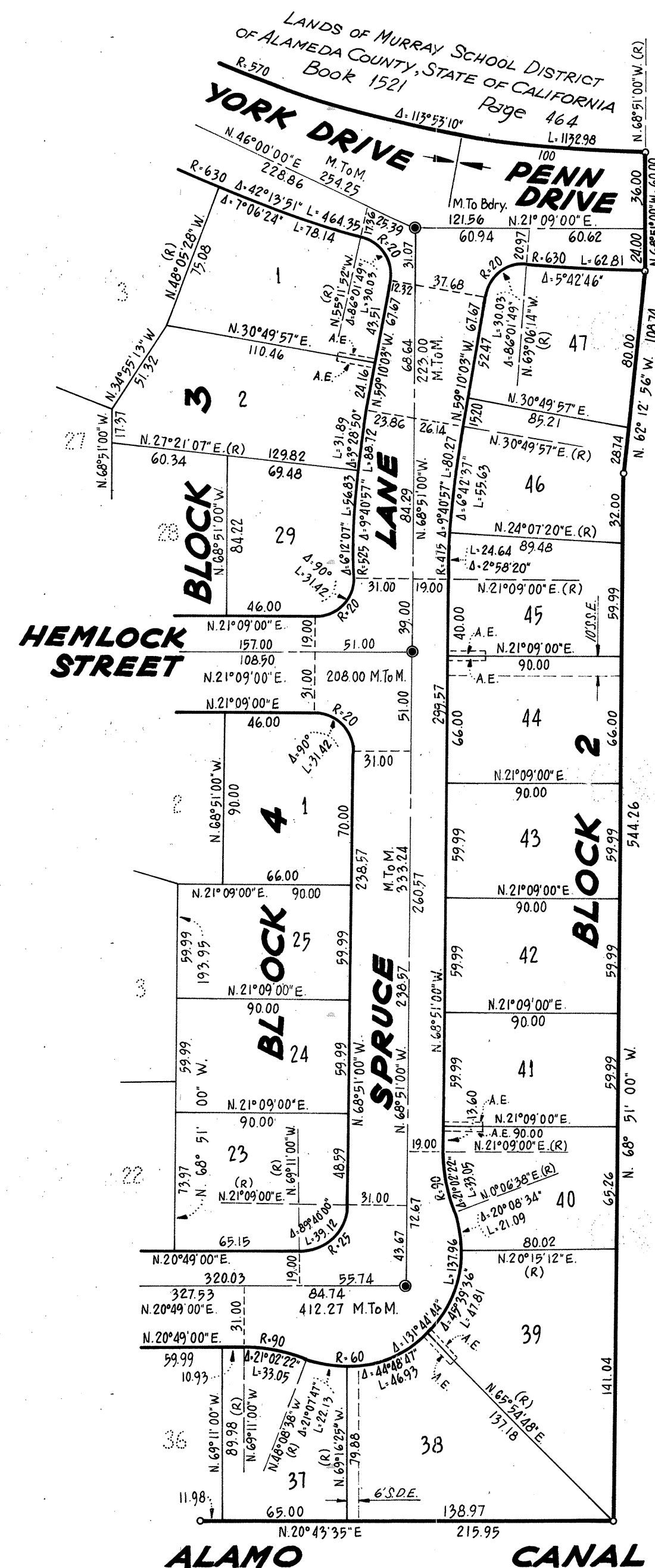
# TRACT 2772

PLEASANTON TOWNSHIP, ALAMEDA COUNTY, CALIFORNIA  
IN THE UNINCORPORATED TERRITORY IN THE COUNTY OF ALAMEDA

KENNETH Q. VOLK &amp; ASSOCIATES—CONSULTING ENGINEERS

SCALE: 1"=60'

JUNE, 1965



## LEGEND

- Indicates Exterior Boundary Angle Point.
- ⊙ " Existing Monument.
- " Monument To Be Installed.
- L " Length of Arc.
- R " Radius of Arc.
- Δ " Central Angle of Arc.
- (R) " Radial Line.
- S.D.E. " Storm Drain Easement.
- S.S.E. " Sanitary Sewer Easement.
- A.E. " Anchor Easement.

20' 2.5' Lot Line  
Unless Otherwise Shown On Map.

Basis of Bearings—See Sheet 2.

Building Setback—See Sheet 2.

SEE SHEET 3

LANDS OF VOLK - Mc LAIN COMMUNITIES, INC.

TR.  
2772