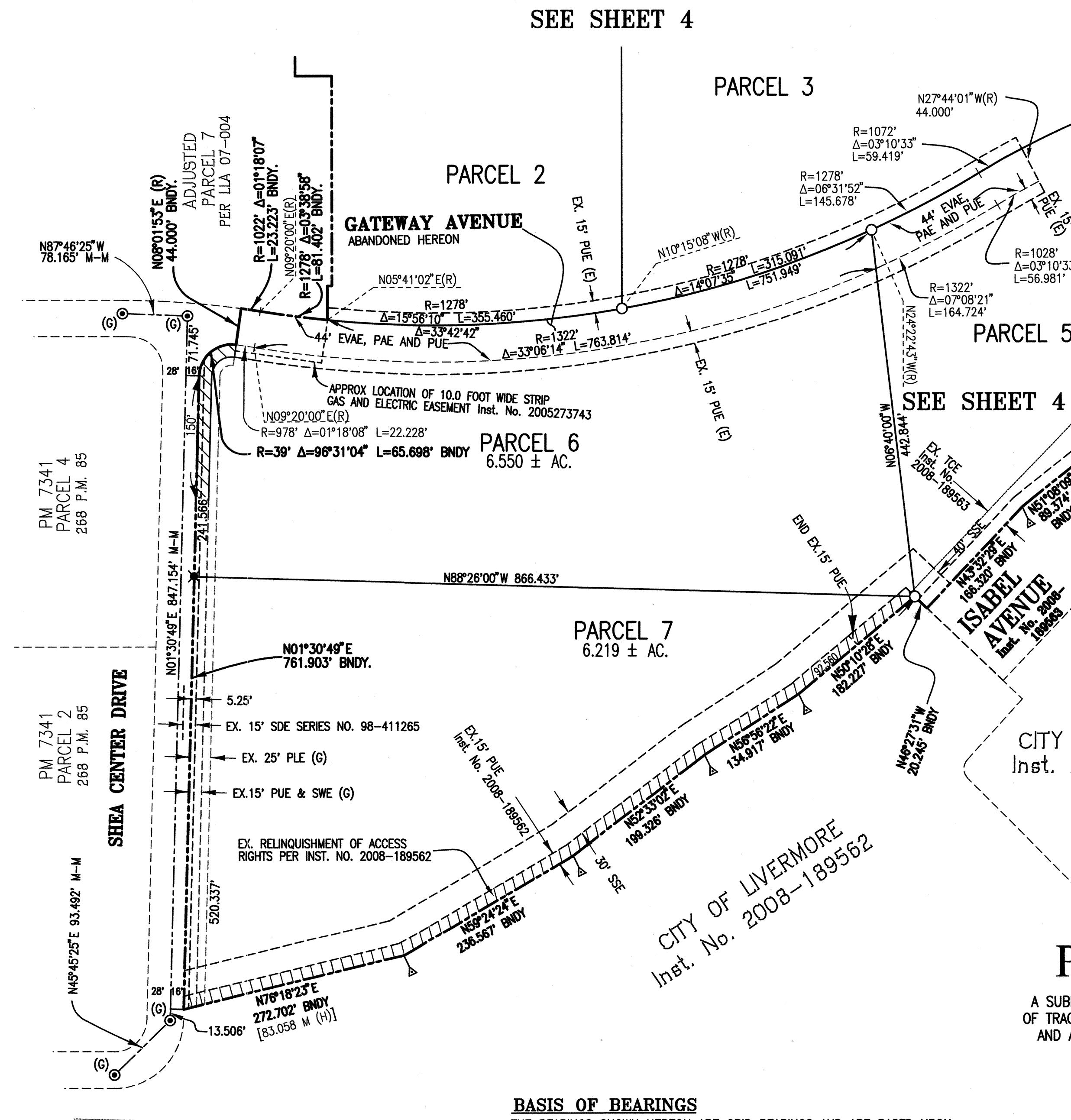
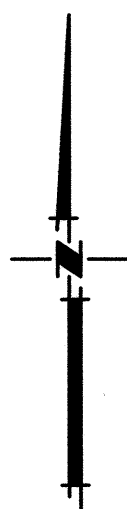


ABANDONMENT NOTE:  
PURSUANT TO ARTICLE 2, SECTION 66434 (G) & 66499.20 1/2 OF THE SUBDIVISION MAP ACT, THIS MAP SHALL CONSTITUTE THE ABANDONMENT IN ITS ENTIRETY WITHIN THE BOUNDARIES OF THIS MAP THE FOLLOWING:

1. THE TEMPORARY ACCESS EASEMENT (T.A.E.) LOCATED AT THE END OF GATEWAY AVENUE, AS SHOWN ON SAID MAP OF TRACT 7610, RECORDED IN BOOK 293 OF MAPS, PAGES 14-36.
2. THE 15 FOOT WIDE SIDEWALK EASEMENT ALONG GATEWAY AVENUE, AS SHOWN ON SAID MAP OF TRACT 7610, RECORDED IN BOOK 293 OF MAPS, PAGES 14-36, WITHIN THE BOUNDARIES OF PARCELS 2, 3, 4, 5, & 6 AS SHOWN ON THIS MAP.
3. THE PORTION OF THE PUBLIC RIGHT OF WAY OF GATEWAY AVENUE DEDICATED ON THE MAP OF TRACT 7610, RECORDED IN BOOK 293 OF MAPS, PAGES 14-36, WITHIN THE BOUNDARIES OF PARCELS 5 AND 6 AS SHOWN ON THIS MAP. THE MONUMENTS SHOWN THEREON THAT PORTION TO BE ABANDONED WILL NO LONGER BE SET.
4. THE RELINQUISHMENT OF ABUTTERS RIGHTS AND PRIVATE ACCESS DEDICATED ON THE MAP OF TRACT 7610, RECORDED IN BOOK 293 OF MAPS, PAGES 14-36, WITHIN THE BOUNDARIES OF PARCELS 4 AND 6 AS SHOWN ON THIS MAP.



# LEGEND:

	EASEMENT LINE
	MONUMENT LINE
	BOUNDARY LINE
	RELINQUISHMENT OF ACCESS RIGHTS
	STANDARD CITY MONUMENT STAMPED W/L.S. 7960
	TO BE SET PER (E)
	SET 3/4" IRON PIPE W/L.S. 7960
	SET CHISELED CROSS
	SET STANDARD CITY MONUMENT STAMPED L.S. 7960
	STANDARD CITY MONUMENT FOUND
	FOUND 3/4" IRON PIPE W/PLASTIC CAP STAMPED RCE 21001
	PER REF. (A) OR FOUND MONUMENT AS NOTED
	FOUND CALTRANS CONTROL MONUMENT BRASS DISC. IN CONCRETE PER REF. (C)
	FOUND COUNTY BOLT AT P.I. PER REF. (A)
	FOUND 6" x 6" CONCRETE HIGHWAY MONUMENT PER (C) OR FOUND MONUMENT AS NOTED.
	ANGLE POINT
	FOUND
	I.P.
	P.A.E.
	P.L.E.
	P.U.E.
	P.T.E.
	L.S.E.
	S.W.E.
	S.E.
	S.D.E.
	S.S.E.
	T.A.E.
	W.L.E.
	E.V.A.E.
	T.C.E.
	(R)
	M
	EX
	C/L
	BNDY.
	INT
	M-M
	M-P/L
	N.T.S.
	(A)
	(5)
	INDICATES SHEET NUMBER

## NOTES:

1. ALL DIMENSIONS SHOWN IN FEET AND DECIMALS EQUIVALENTS THEREOF.
2. FOR REFERENCES, SEE SHEET 2.
3. PROPERTY SUBJECT TO AN AVIGATION EASEMENT FOR AIRCRAFT FLIGHT AND PASSAGE PER DOCUMENT SERIES NOS. 2003006164 AND 2003006165, ALAMEDA COUNTY RECORDS.
4. PROPERTY SUBJECT TO TERMS AND PROVISIONS CONTAINED IN DOCUMENT ENTITLED "EASEMENT AND DEDICATION AGREEMENT" RECORDED JANUARY 6, 2003, IN DOCUMENT SERIES NO. 2003006163 FOR OPEN SPACE AND CREEK CORRIDOR EASEMENTS, MODIFICATION OF EASEMENT LOCATIONS AS SHOWN ON TRACT 7610.
5. ALL DISTANCES SHOWN ARE GROUND LEVEL DISTANCES
6. THE MAPPED LOCATION OF THE RIGHT OF WAY OF ISABEL AVENUE, PORTOLA AVENUE AND THE CITY OF LIVERMORE PARCELS ARE PER THE FIELD LOCATION OF THE IMPROVEMENTS STAKED BY MARK THOMAS AND CO. INC. AND THE RECORDED LEGAL DESCRIPTIONS.

## BASIS OF BEARINGS

THE BEARINGS SHOWN HEREON ARE GRID BEARINGS AND ARE BASED UPON THE LINE BETWEEN CALTRANS CONTROL MONUMENTS "A-448" AND "A-449" AS SHOWN ON SHEET S-167.0 OF THE CALTRANS MONUMENT MAP "ALA 580, PM 9.3 TO 14.2" ON FILE IN THE ALAMEDA COUNTY PUBLIC WORKS DEPARTMENT, FILE "LSK-4320-22", AND WAS TAKEN AS : N 83°38'39" E.

## PARCEL MAP 9770

A SUBDIVISION OF PARCELS 15, 16, & AND A PORTION OF PARCEL 17 OF TRACT 7610 AS RECORDED IN BOOK 293 OF MAPS AT PAGES 14-36, AND ADJUSTED PARCEL 14 AS SHOWN ON LOT LINE ADJUSTMENT No. "LLA-07-004 AS RECORDED IN SERIES No. 2007368948,

ALAMEDA COUNTY RECORDS  
CITY OF LIVERMORE  
ALAMEDA COUNTY, CALIFORNIA

**MACKAY & SOMPS**

ENGINEERS PLANNERS SURVEYORS  
5142B FRANKLIN DR., PLEASANTON, CA 94588 (925)225-0690

JULY, 2008

16170-2

SHEET 6 OF 6

Parcel map 9770 map b/c 310 pg 8