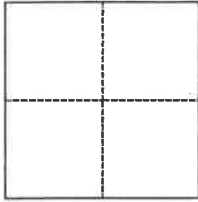


CORNER RECORD

Agency Index

BK 149 PG 54

Document Number CR 16237

City of UNINCORPORATED (SAN LORENZO) County of ALAMEDA, CaliforniaBrief Legal Description INTERSECTION HESPERIAN BOULEVARD & BARTLETT AVENUE**CORNER TYPE****COORDINATES (Optional)**

- ☐ Government Corner ☐ Control
☐ Meander ☐ Property
☐ Rancho ☒ Other

Date of Survey May 19, 2022

N. _____ E. _____

Elevation _____

Units ☐ Metric ☐ U.S. Survey Foot

Horizontal Datum _____

Zone _____ Epoch Date _____

Vertical Datum _____

☐ Complies with Public Resources Code §§8801-8819☐ Complies with Public Resources Code §§8890-8902

PLS Act Ref.:

☐ 8765(d)☒ 8771☐ 8773☐ Other:Corner/
Monument:☒ Left as found☐ Established☐ Rebuilt☒ Pre-Construction☐ Found and tagged☐ Reestablished☒ Referenced☐ Post-Construction

Narrative of corner identified and monument as found, set, reset, replaced, or removed:

☐ See sheet #2 for description(s):

FOUND MONUMENT PER RS 2827 (43 RS 2) AS SHOWN ON SIDE 2. SET BRASS NAILS & TAGS STAMPED "ALA CO SURV" IN LEAD IN TOP OF CURB, UNLESS OTHERWISE NOTED, AS STRADDLERS FOR FOUND MONUMENT. NO PREVIOUS 8771(b) CORNER RECORD ON FILE.

SURVEYOR'S STATEMENT

This Corner Record was prepared by me or under my direction in conformance with

the Professional Land Surveyors' Act on August 8, 2022

Signed

(P.L.S.) or R.C.E. No.

8427**COUNTY SURVEYOR'S STATEMENT**

This Corner Record was received

and examined and filed

SEP 28 2022

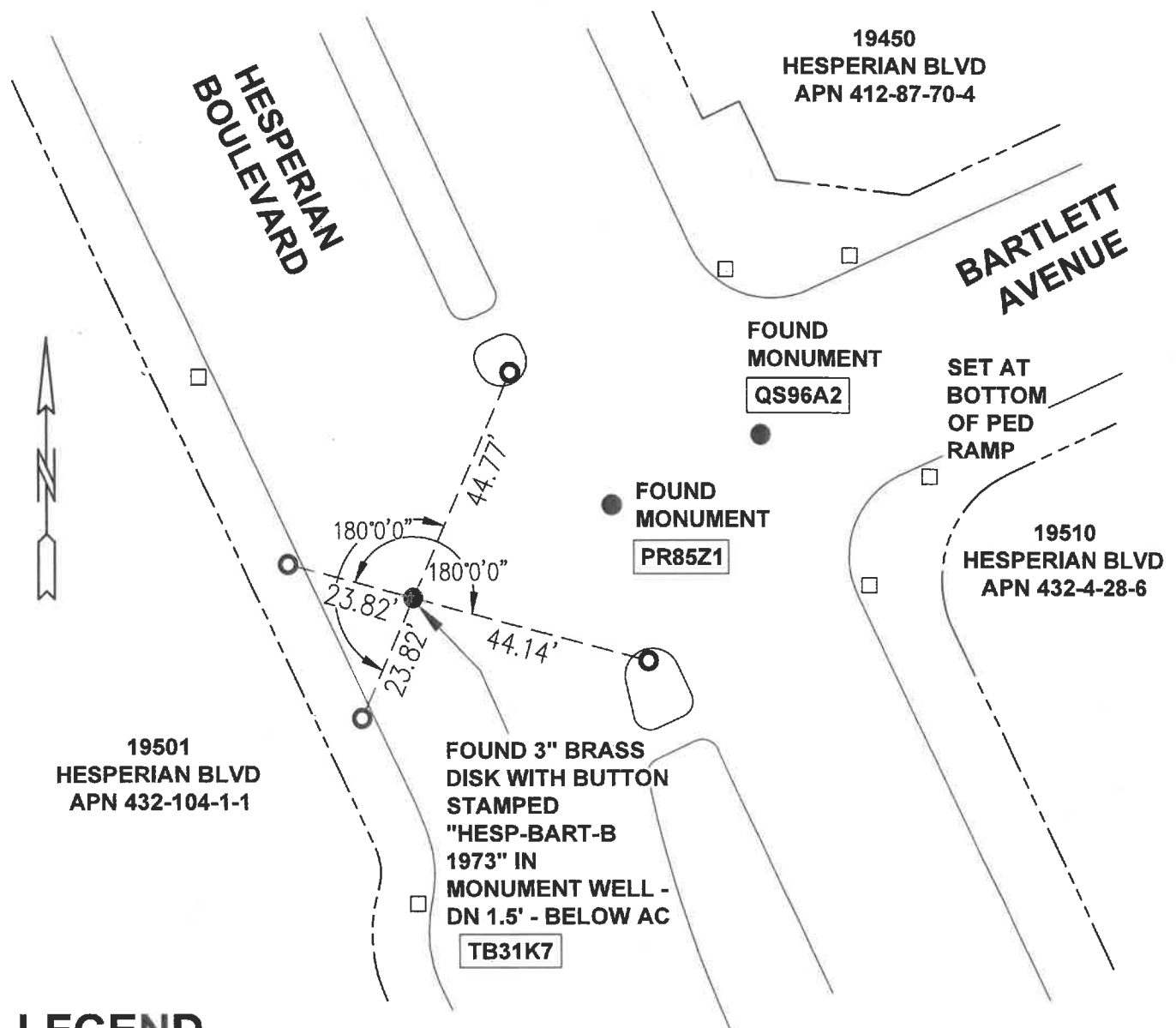
Signed

(P.L.S.) or R.C.E. No.

7010Title ALAMEDA COUNTY SURVEYOR

County Surveyor's Comment





LEGEND

AA##A#

ALAMEDA COUNTY MONUMENT ID



SET BRASS NAIL AND TAG "ALA CO SURV" IN LEAD IN TOP OF CURB.

SET BRASS NAIL AND TAG "ALA CO SURV" IN LEAD IN TOP OF CURB
REFERENCING OTHER MONUMENTS

#####

STREET ADDRESS

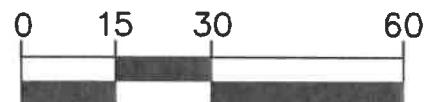


CURB LINE



PROPERTY LINE

APN

ASSESSOR'S PARCEL
NUMBER

(IN FEET)

1" = 30