

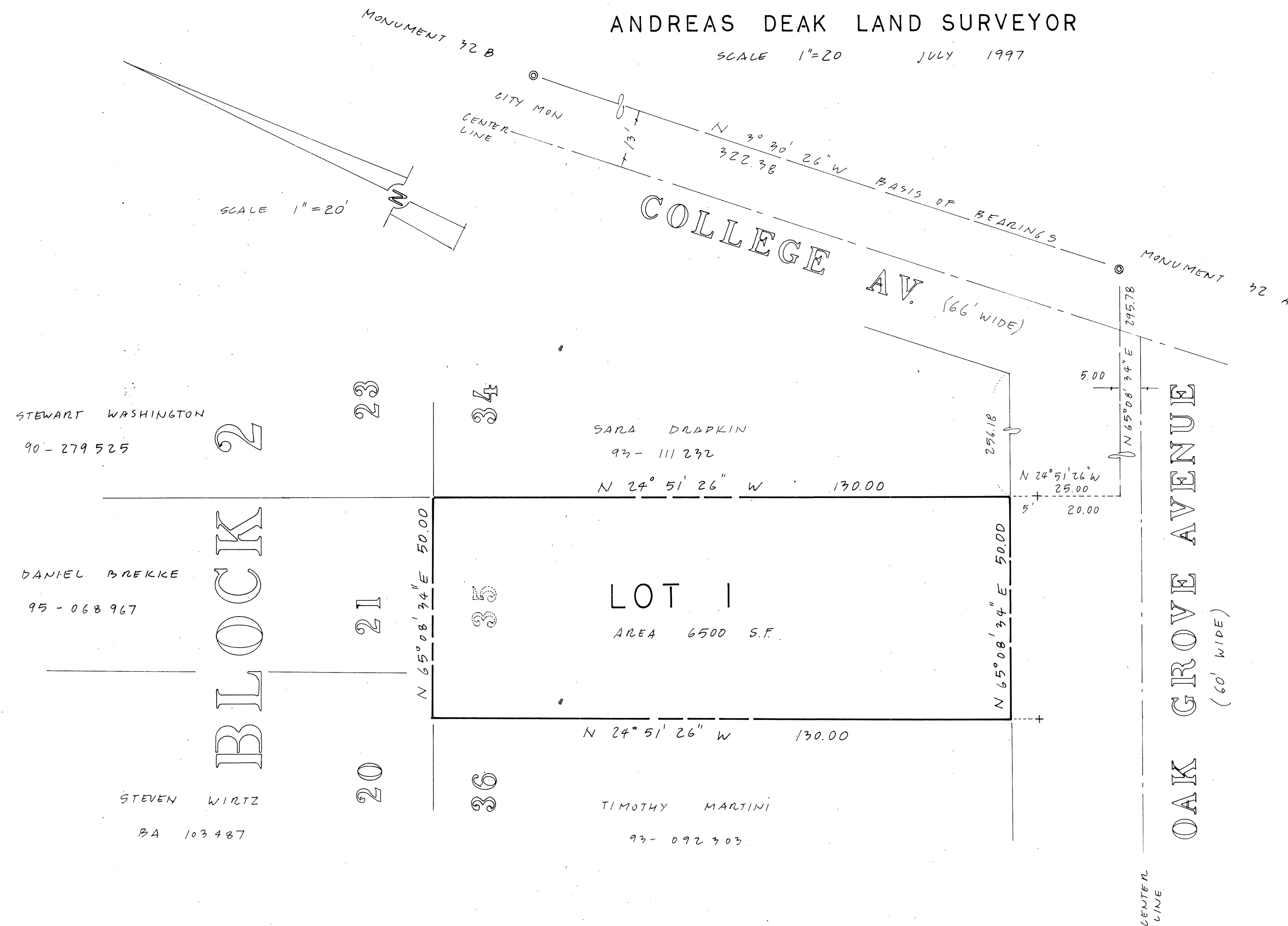
PARCEL MAP No. 7131

OAKLAND, ALAMEDA COUNTY, CALIFORNIA

A CONDOMINIUM SUBDIVISION OF LOT 35, BLOCK 2, OAK
LAWN BEING A RESUBDIVISION OF BLOCK R & S AND LOTS
4 AND 5 IN BLOCK Q, VERNON PARK, FILED MAY 9, 1906,
MAP BOOK 21, PAGE 22, ALAMEDA COUNTY RECORDS, CALIFORNIA.

ANDREAS DEAK LAND SURVEYOR

SCALE 1"=20' JULY 1997



BASIS OF BEARINGS

MONUMENT LINE BETWEEN MONUMENTS 32A AND
32B TAKEN AS NORTH 3° 30' 26" WEST,
CALIFORNIA COORDINATE SYSTEM ZONE III.

LEGEND

- EXTERIOR BOUNDARY
- MONUMENT LINE
- CENTER LINE OF STREET
- OTHER BOUNDARY LINE
- STANDARD CITY OF OAKLAND MONUMENT
- LOT CROSS

Parcel Map 7131 Map Bk 232 Pg 50