

01 MECHANICAL PLAN
1/4"=1'-0"

ATTENTION GENERAL CONTRACTOR:
"RE-ENGINEERING" DEVIATIONS FROM THE SHOWN DESIGN AND REQUIRED HVAC EQUIPMENT MUST BE APPROVED IN ADVANCE BY THE ARCHITECT AND PROFESSIONAL ENGINEER. UNAUTHORIZED SUBSTITUTIONS OR ALTERATIONS WILL VOID THE SIGNATURE AND SEAL OF THE PROFESSIONAL ENGINEER AND LEAVE VIOLATORS RESPONSIBLE FOR RESUBMISSION OF SIGNED AND SEALED DRAWINGS.

GENERAL NOTES

- A. CONTRACTORS AND SUB-CONTRACTORS SHALL CAREFULLY REVIEW THE CONSTRUCTION DOCUMENTS. INFORMATION REGARDING THE COMPLETE WORK IS DISPERSED THROUGHOUT THE DOCUMENT SET AND CANNOT BE ACCURATELY DETERMINED WITHOUT REFERENCE TO THE COMPLETE DOCUMENT SET.
- B. COORDINATE WITH THE WORK OF OTHER SECTIONS. EQUIPMENT FURNISHED BY OTHERS, REQUIREMENTS OF THE OWNER, AND WITH THE CONSTRAINTS OF THE EXISTING CONDITIONS OF THE PROJECT SITE. PROVIDE DUCT RISES AND DROPS AS REQUIRED FOR FIELD INSTALLATION AND TRADE COORDINATION. NOTIFY ARCHITECT OF ANY DISCREPANCIES BEFORE STARTING WORK.
- C. DRAWINGS FOR HVAC WORK ARE DIAGRAMMATIC, SHOWING THE GENERAL LOCATION, TYPE, LAYOUT, AND EQUIPMENT REQUIRED. THE DRAWINGS SHALL NOT BE SCALED FOR EXACT MEASUREMENT. REFER TO ARCHITECTURAL DRAWINGS FOR DIMENSIONS. REFER TO MANUFACTURER'S STANDARD INSTALLATION DRAWINGS FOR EQUIPMENT CONNECTIONS AND INSTALLATION REQUIREMENTS. PROVIDE DUCTWORK, CONNECTIONS, ACCESSORIES, OFFSETS, AND MATERIALS NECESSARY FOR A COMPLETE SYSTEM.
- D. ALL WORK SHALL COMPLY WITH STATE AND LOCAL CODE REQUIREMENTS AS APPROVED AND AMENDED BY THE GOVERNING CITY. PURCHASE ALL PERMITS ASSOCIATED WITH THE WORK. OBTAIN ALL INSPECTIONS REQUIRED BY CODE.

AIR DISTRIBUTION SIZING - ROUND DUCT

UNLESS NOTED OTHERWISE ON PLANS, THE FOLLOWING CHART SHALL APPLY TO ROUND DUCT SIZES FOR SUPPLY AIR*, EXHAUST AIR, AND RETURN AIR.

SUPPLY AND EXHAUST AIR CFM RANGE	DUCT SIZE	RETURN AIR CFM RANGE
0-100	6"	0-70
105-200	8"	75-155
205-395	10"	160-285
400-605	12"	290-465
610-920	14"	470-710
925-1200	16"	715-1015

* DIFFUSER NECK SIZES SHALL MATCH SUPPLY AIR DUCT SIZING.

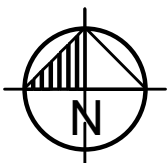
KEYED NOTES

- 1. PROVIDE TYPE-I HOOD WITH 16 GAUGE BLACK IRON GREASE EXHAUST DUCT CONTINUOUSLY WELDED LIQUID TIGHT WITH CLEAN OUTS AND ACCESS PANELS INSTALLED AT ANY REQUIRED FIELD OFFSETS. SLOPE DUCT TOWARDS HOOD IF ANY HORIZONTAL OFFSETS ARE REQUIRED. COMPLY STRICTLY TO NFPA 96 AND LOCAL CODES. COORDINATE DUCT CONNECTION SIZE, TRANSITION, AND LOCATION WITH HOOD MANUFACTURER. REFER TO DETAILS ON SHEET M-3.1-4. VERIFY LOCATIONS OF HOOD AND EXHAUST FAN ON SITE WITH MOST RECENT KITCHEN EQUIPMENT PLANS.
- 2. T-2900 PROGRAMMABLE THERMOSTAT 66" A.F.F. ON WALL NEAR LOCATION INDICATED THIS SHEET. AUDIO-VISUAL ANNUNCIATOR TIED INTO SMOKE DETECTOR. COORDINATE LOCATION ON SITE WITH G.C. AND EQUIPMENT. AVOID SOURCES OF HEAT. SEAL WALL OPENINGS WITH CAULK. RTU-1: HUMIDISTAT SET TO 55% RELATIVE HUMIDITY.
- 3. PLUMBING CONTRACTOR SHALL PROVIDE COMBUSTION AIR FOR WATER HEATER. DISCHARGE SHALL BE MINIMUM 10 FEET FROM AIR INTAKES. OFFSET AND TRANSITION AT CONNECTIONS AS NEEDED. USE MANUFACTURERS RECOMMENDATIONS.
- 4. PROVIDE EXHAUST GRILLE IN RESTROOM OVER TOILET. RUN 6" SHEETMETAL DUCT FROM CONNECTION ON GRILLE TO ROOFTOP EXHAUST FAN. OFFSET AND TRANSITION AT CONNECTIONS AS NEEDED. USE FACTORY-MANUFACTURED PIPE AND FITTINGS ONLY. CONFIRM LOCATION ON SITE.
- 5. OCCUPIED/UNOCCUPIED PANEL FOR NIGHT SET-BACK LOCATED NEAR SWITCH GEAR. COORDINATE LOCATION ON SITE WITH GENERAL CONTRACTOR AND WALL-MOUNTED EQUIPMENT.
- 6. SHIM CURBS ON ROOF IN ORDER TO MAKE TOP OF CURBS LEVEL. SEE DETAIL ON SHEET M-4.2.

ISSUE TABLE		
No.	Date (mm/dd/yy)	Description

REVISIONS		
No.	Date	Description

DRAWINGS REVISED AS PER DESIGN BULLETIN		
No.	Date	Description



PROJECT NORTH

THIS DRAWING IS OWNED BY OR LICENSED FOR USE BY POPEYES LOUISIANA KITCHEN (OR ITS AFFILIATED OR RELATED COMPANIES) AND MAY NOT BE REPRODUCED, USED, DOWNLOADED, DISSEMINATED, PUBLISHED, OR TRANSMITTED IN ANY FORM OR BY ANY MEANS, EXCEPT WITH THE PRIOR WRITTEN CONSENT OF POPEYES LOUISIANA KITCHEN. COPYRIGHT INFRINGEMENT IS A VIOLATION OF FEDERAL LAW SUBJECT TO CRIMINAL AND CIVIL PENALTIES.

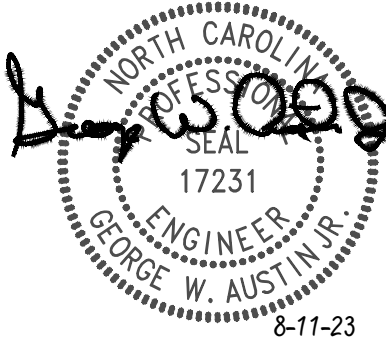
THE CONTRACTOR IS TO VERIFY ALL DIMENSIONS AND CONDITIONS ON THE PROJECT AND TO REPORT ANY DISCREPANCIES TO THE POPEYES LOUISIANA KITCHEN REPRESENTATIVE PRIOR TO COMMENCING WORK. THESE DRAWINGS ARE NOT TO BE USED FOR CONSTRUCTION PURPOSES UNLESS INDICATED BY POPEYES LOUISIANA KITCHEN. AS ISSUED FOR CONSTRUCTION.

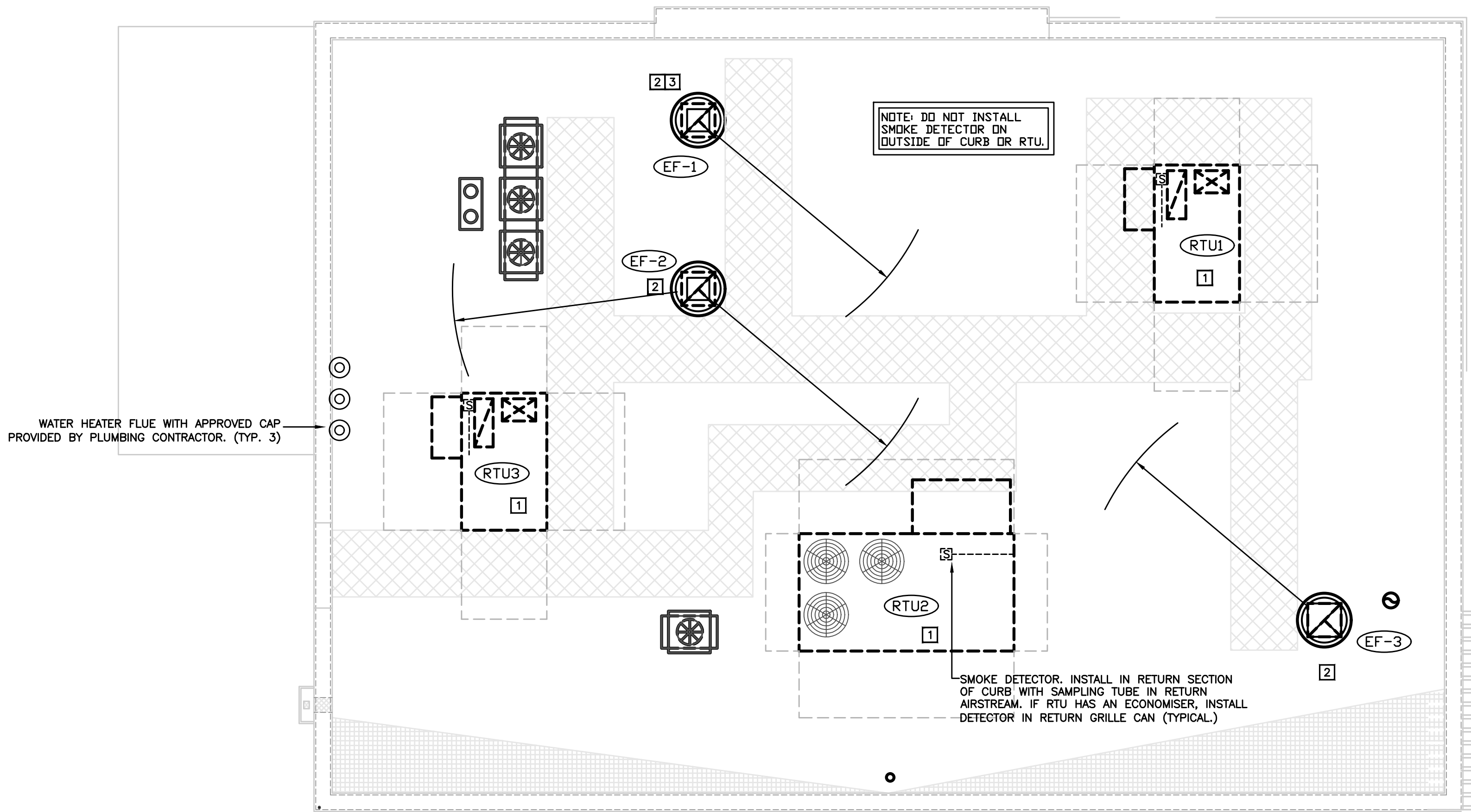
rchitrave GROUP P.C.
157 Broad Street • Suite 107
Red Bank, New Jersey 07701
Phone (732) 212-0007 Fax (732) 212-0059
JOSE C. SANTOS, P.E. - NJ A18745
NY 03506 DE 55-000774
VA 015922 NC 122606CF 59665

SHULTZ ENGINEERING GROUP
212 N. McDowell St, Suite 204
Charlotte, NC 28204
(P) 704.334.7363 (F) 704.347.0093
www.shultzeg.com | SEG - 23-436
NC FIRM LICENSE NUMBER: C-0898
P: JR E: JTM M: JTM RR P: GR



Store Type	
US 2112 PROTOTYPE 2112-21	
Location	
PROTOTYPE 2112 (U.S.) 503 W. 3RD STREET PEMBROKE, NORTH CAROLINA	
Drawing Title	
MECHANICAL PLAN	
Drawn	Checked
JTM	JS
Scale	Date
	8/11/23
Project No.	Drawing No.
G23-29	M1.1





01 MECHANICAL ROOF PLAN

1/4"=1'-0"

MECHANICAL KEY NOTES

1. PROVIDE ROOFTOP UNIT AND CURB. COORDINATE UNIT WITH STRUCTURE. SHIM UNIT AND CURB LEVEL FOR PROPER CONDENSATE DRAINAGE. PROVIDE FLEXIBLE CONNECTORS ON SUPPLY AND RETURN AIR DUCT CONNECTIONS. TRANSITION TO DUCT SIZES SHOWN ON SHEET M1.1.
2. INSTALL OWNER FURNISHED ROOF MOUNTED EXHAUST FAN AND CURB.
3. INSTALL OWNER FURNISHED WIND BAND EXTENSION FOR GREASE EXHAUST FAN. EXHAUST TERMINATION MUST BE EQUAL OR HIGHER THAN ANY WALL OR PARAPET WITHIN 5'-0" OF FAN. VERIFY REQUIRED HEIGHT PRIOR TO BID AND COORDINATE WITH HOOD MANUFACTURER FOR ADDITION TO EQUIPMENT PRIOR TO BID.

GENERAL NOTES

- A. SEAL ALL ROOF PENETRATIONS WATER TIGHT. COORDINATE ALL PENETRATIONS WITH GENERAL CONTRACTOR AND ROOFING CONTRACTOR.
- B. ALL OUTDOOR INTAKES SHALL BE LOCATED AT LEAST 10 FEET FROM EXHAUST OUTLETS, APPLIANCE FLUES AND PLUMBING VENTS.
- C. MAINTAIN ALL CODE AND MANUFACTURER'S RECOMMENDED CLEARANCES AROUND ALL ROOF EQUIPMENT.

ISSUE TABLE

No.	Date (mm/dd/yy)	Description

REVISIONS

No.	Date	Description

DRAWINGS REVISED AS PER DESIGN BULLETIN

No.	Date	Description



PROJECT NORTH

THIS DRAWING IS OWNED BY OR LICENSED FOR USE BY POPEYES LOUISIANA KITCHEN, OR ITS AFFILIATED OR RELATED COMPANIES AND MAY NOT BE REPRODUCED, USED, DOWNLOADED, DISSEMINATED, PUBLISHED, OR TRANSMITTED IN ANY FORM OR BY ANY MEANS, EXCEPT WITH THE PRIOR WRITTEN CONSENT OF POPEYES LOUISIANA KITCHEN. COPYRIGHT INFRINGEMENT IS A VIOLATION OF FEDERAL LAW SUBJECT TO CRIMINAL AND CIVIL PENALTIES.

THE CONTRACTOR IS TO VERIFY ALL DIMENSIONS AND CONDITIONS ON THE PROJECT AND TO REPORT ANY DISCREPANCIES TO THE POPEYES LOUISIANA KITCHEN REPRESENTATIVE PRIOR TO COMMENCING WORK. THESE DRAWINGS ARE NOT TO BE USED FOR CONSTRUCTION PURPOSES UNLESS INDICATED BY POPEYES LOUISIANA KITCHEN. AS ISSUED FOR CONSTRUCTION.

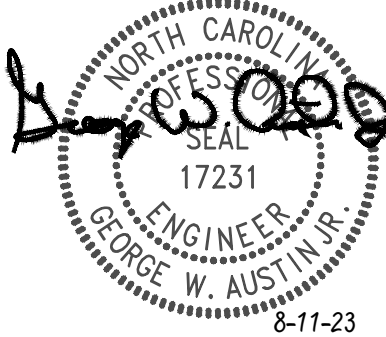
rchitrave
GROUP P.C.
157 Broad Street • Suite 107
Red Bank, New Jersey 07701
Phone (732) 212-0007 Fax (732) 212-0059
JOSE C. SANTOS, P.A. - NJ A18745
NY 03506 DE 55-000774
VA 015922 NC 122606CF 52665

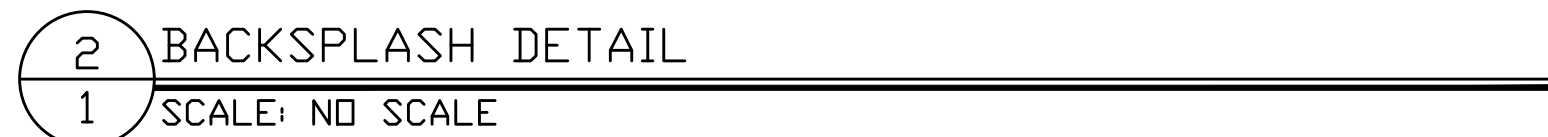
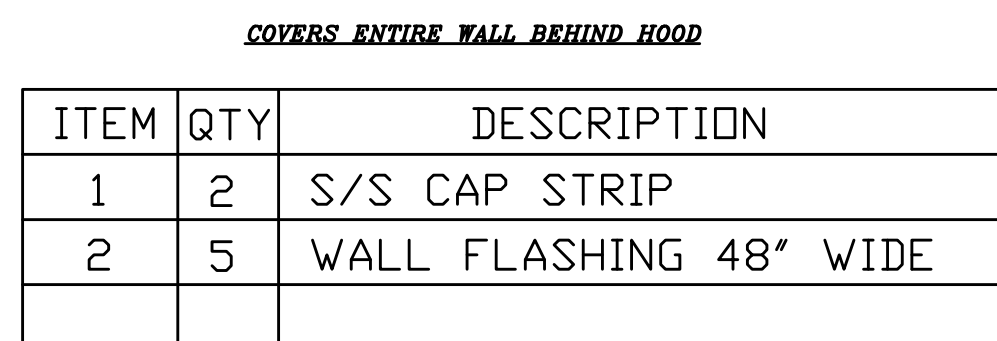
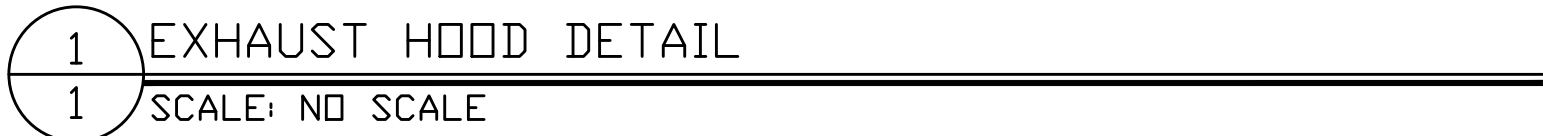
SHULTZ ENGINEERING GROUP
212 N. McDowell St, Suite 204
Charlotte, NC 28204
(P) 704.334.7363 (F) 704.347.0093
www.shultzeg.com | SEG - 23-436
NC FIRM LICENSE NUMBER: C-0898
PM: DD IM: JTM E: RR P: GR



POPEYES

Store Type	US 2112 PROTOTYPE 2112-21
Location	PROTOTYPE 2112 (U.S.) 503 W. 3RD STREET PEMBROKE, NORTH CAROLINA
Drawing Title	MECHANICAL ROOF PLAN
Drawn	JTM
Checked	JS
Scale	Date 8/11/23
Project No.	Drawing No. G23-29 M1.2





PLK 2112
15' HOOD PACKAGE

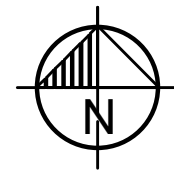
FRANKE FOODSERVICE SYSTEMS AMERICAS, INC.

800 AVIATION PARKWAY
SMYRNA, TN USA 37167

PHONE: 1-800-877-5178
WWW.FRANKESUPPLY.COM
FS-BKSALES.US@FRANKE.COM

[illegible][illegible][illegible]

DRAWINGS REVISED AS PER DESIGN BULLETIN		
No.	Date	Description



PROJECT NORTH

THIS DRAWING IS OWNED BY OR LICENSED FOR USE BY POPEYES LOUISIANA KITCHEN (OR ITS AFFILIATED OR RELATED COMPANIES) AND MAY NOT BE REPRODUCED, USED, DOWNLOADED, DISSEMINATED, PUBLISHED, OR TRANSFERRED IN ANY FORM OR BY ANY MEANS, EXCEPT WITH THE PRIOR WRITTEN CONSENT OF POPEYES LOUISIANA KITCHEN. COPYRIGHT INFRINGEMENT IS A VIOLATION OF FEDERAL LAW SUBJECT TO CRIMINAL AND CIVIL PENALTIES.

THE CONTRACTOR IS TO VERIFY ALL DIMENSIONS AND CONDITIONS ON THE PROJECT AND TO REPORT ANY DISCREPANCIES TO THE POPEYES LOUISIANA KITCHEN REPRESENTATIVE PRIOR TO COMMENCING WORK. THESE DRAWINGS ARE NOT TO BE USED FOR CONSTRUCTION PURPOSES UNLESS INDICATED BY POPEYES LOUISIANA KITCHEN AS "ISSUED FOR CONSTRUCTION".

FRANKE

**Franke Foodservice Systems
Americas, Inc.**
800 A lation Parkway
Smyrna, TN USA 371 7
Tel. 800 472-2954
s customerservice.us ranke.com
www.ranksupply.com

2021 Franke Foodservice Americas, Inc.
These drawings and specifications are the property of Franke Technology and Trademark Ltd. and shall not be reproduced, copied or transcribed in any third party without the prior written permission of Franke Technology and Trademark Ltd., Hergiswil, Switzerland.

Account: POPEYES
Restaurant #
PLK 2112
Title
WALL MOUNTED
INSTALLATION DETAIL

Operator			
-			
Site Address			
-			
City			
-	-		-
State	Zip Code		Country
-			
Region			

-
Building Type
-
Electrical Service
-
Gas Service
-
Market Manager
-
Franke Project Number

Created by:
HP033
Date Issued
10/01/20
Modified By:
AM029
Drawing Scale
AS NOTED
Units
INCHES
Drawing Number
-
Revision
A

1 OF 4

Revision

Revision

A

POPEYES.

Store Type	US 2112 PROTOTYPE 2112-21
------------	------------------------------

Location

PROTOTYPE
2112 (U.S.)

503 W. 3RD STREET
PEMBROKE, NORTH CAROLINA

Drawing Title

MECHANICAL HOOD
DRAWINGS

Drawn	Checked
Scale	Date 8/11/23
Project No. G23-29	Drawing No. M3.1

Company Logo

A

rchitrave
GROUP PC

157 Broad Street • Suite 101
Red Bank, New Jersey 07701
Phone: 609.398.2200

SHULTZ ENGINEERING GROUP
212 N. McDowell St. Suite 204
Charlotte, NC 28204
(P) 704.334.7363 (F) 704.347.0093
www.shultzeng.com | SEG - 23-436
NC FIRM LICENSE NUMBER: C-0898
PM: DD M: JTM E: RR P: GR



POPEYES LOUISIANA KITCHEN MODEL 2112, 503 W. 3RD STREET, PEMBROKE, NC: 2124 PROTOTYPE DOCUMENTS STORE NO. 14185

EXHAUST FAN INFORMATION - PLK 2136 PROTO														
FAN UNIT NO.	TAG	QTY	FAN UNIT MODEL #	MANUFACTURER	CFM	ESP	RPM	MOTOR ENCL.	HP	BHP	#	VOLT	FLA	DISCHARGE VELOCITY
1	EF-LEFT	1	FR-BUS50FA	FRANKE FOODSERVICE	1231	0.800	1501	TEAD-ECM	0.500	0.3500	1	115	6.3	468 FPM
2	EF-RIGHT	1	FR-BUS50FA	FRANKE FOODSERVICE	1231	0.800	1501	TEAD-ECM	0.500	0.3500	1	115	6.3	468 FPM

FAN UNIT NO.	TAG	QTY	DESCRIPTION											
1	EF-LEFT	1	GREASE BOX. EXHAUST FAN HEAT BATFLE. ECM VIBING PACKAGE - PWM SIGNAL FROM ECMPS PREVIRE (TELCO MOTOR), CCW ROTATION. GREASE BOX. EXHAUST FAN HEAT BATFLE. ECM VIBING PACKAGE - PWM SIGNAL FROM ECMPS PREVIRE (TELCO MOTOR), CCW ROTATION.											
2	EF-RIGHT	1	GREASE BOX. EXHAUST FAN HEAT BATFLE. ECM VIBING PACKAGE - PWM SIGNAL FROM ECMPS PREVIRE (TELCO MOTOR), CCW ROTATION.											

FAN UNIT NO.	TAG	EXHAUST				SUPPLY			
		GREASE CLIP	GRAVITY DAMPER	WALL MOUNT	SIDE DISCHARGE	GRAVITY DAMPER	MOTORIZED DAMPER	WALL MOUNT	
1	EF-LEFT	YES							
2	EF-RIGHT	YES							

NO	ON FAN	TAG	WEIGHT	ITEM	SIZE
1	# 1	EF-LEFT	34 LBS	CURB	19.500"V X 19.500"L X 24.000"H HINGED
2	# 2	EF-RIGHT	34 LBS	CURB	19.500"V X 19.500"L X 24.000"H HINGED

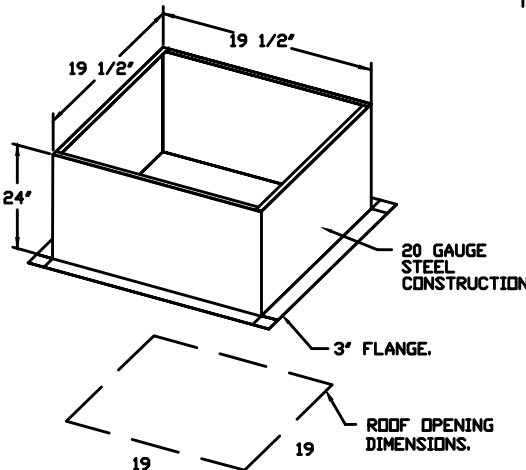
FEATURES:

- DIRECT DRIVE CONSTRUCTION ON BELTS/PULLEYS.
- ROOF MOUNTED FANS.
- UL75 AND UL75C AND UL-564S
- VARIABLE SPEED CONTROL.
- INTERNAL VIBING.
- THERMAL OVERLOAD PROTECTION (ENGINE PHASE).
- HIGH HEAT OPERATION 300° F/149°C.
- GREASE CLASSIFICATION TESTING.
- NEMA 3R SAFETY DISCONNECT SWITCH.

NORMAL TEMPERATURE TEST
EXHAUST FAN MUST OPERATE CONTINUOUSLY WHILE EXHAUSTING AIR AT 300° F/149°C UNTIL ALL FAN PARTS HAVE REACHED THERMAL EQUILIBRIUM, AND WITHOUT ANY RETROGRADING EFFECTS TO THE FAN WHICH WOULD CAUSE UNSAFE OPERATION.

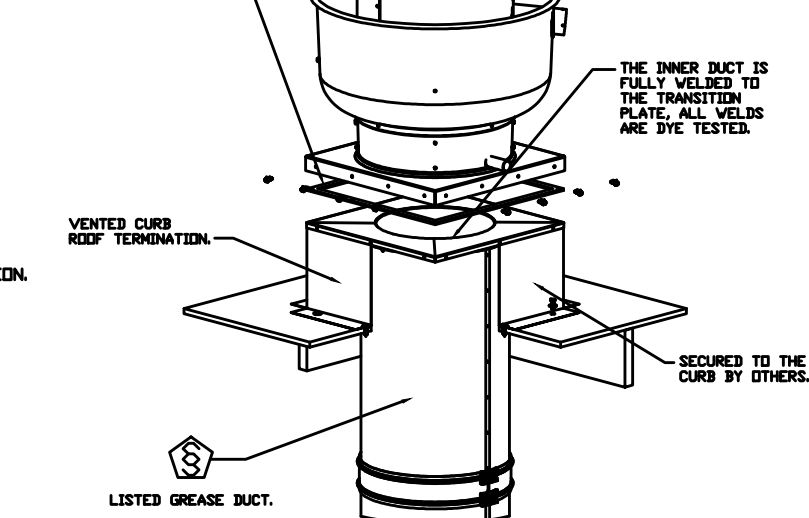
ABNORMAL FLARE-UP TEST
EXHAUST FAN MUST OPERATE CONTINUOUSLY WHILE EXHAUSTING BURNING GREASE VAPORS AT 600° F/316° C FOR A PERIOD OF 15 MINUTES WITHOUT THE FAN BECOMING DAMAGED TO ANY EXTENT THAT COULD CAUSE AN UNSAFE CONDITION.

DEFINITIONS:
GREASE BOX.
EXHAUST FAN HEAT BATFLE.
FAN BASE GRABBLE SEAL - SHIP LOOSE - FOR GREASE BOXES.
ECM VIBING PACKAGE - MANUAL OR F-VIDING REFERENCE SPEED CONTROL (TELCO MOTOR), CCW ROTATION.

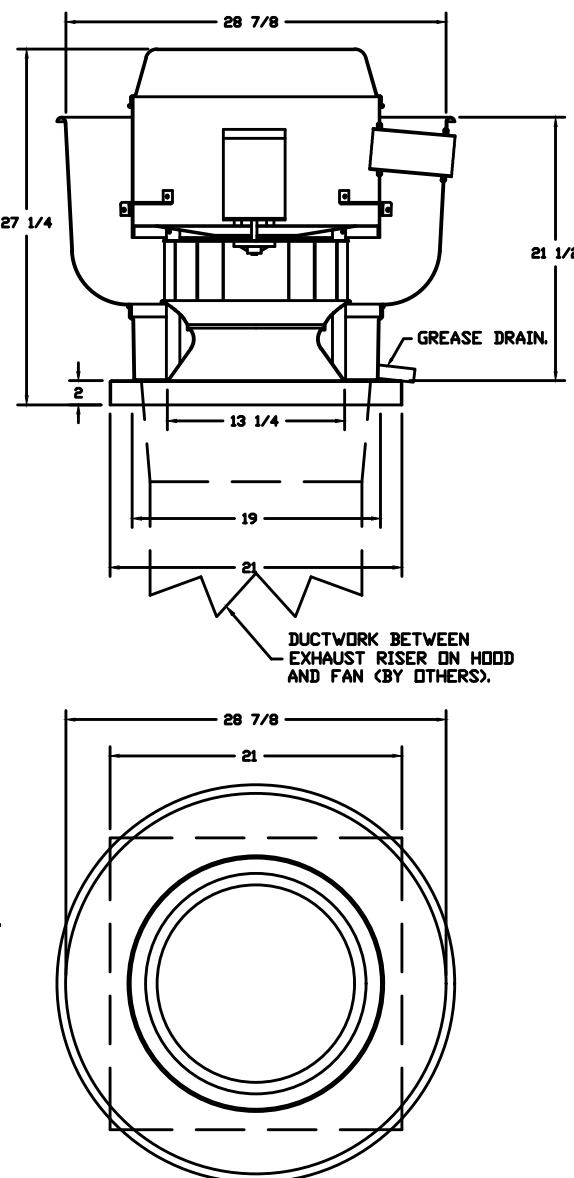


PITCHED CURBS ARE AVAILABLE FOR PITCHED ROOFS.
SPECIFY PITCH:
EXAMPLE: 7/12 PITCH = 30° SLOPE.

HIGH TOP GASKET IS USED TO SEAL THE FAN TO THE TRANSITION PLATE.



FANS: 81-07/-LEFT, 82-107-RIGHT - FR-BUS50FA EXHAUST FAN



EXHAUST HOOD DATA

HOOD INFORMATION - PLK 2136 PROTO

HOOD NO	TAG	MODEL	MANUFACTURER	LENGTH	MAX COOKING TEMP	TYPE	APPLIANCE DUTY	DESIGN CFM/FT	TOTAL EXH CFM	EXHAUST PLAN (RISER)							HOOD CONSTRUCTION		HOOD CONFIG	
										WIDTH	LENG	HEIGHT	DIA	CFM	VEL	SP			END TO END	RDW
1		3347 FR-BD-2	FRANKE FOODSERVICE	14' 10'	450 DEG	I	MEDIUM	166	2462		4"	12"	1231	1567	-0.734"	430 SS	WHERE EXPOSED	ALONE	ALONE	

HOOD INFORMATION

HOOD NO.	TAG	FILTERS				LIGHTS				UTILITY CABINETS				FIRE HOOD SYSTEMS	HOOD WEIGHT
		TYPE	QTY	HEIGHT	LENGTH	EFFICIENCY # 7	QTY	TYPE	WIRE GUARD	LOCATION	SIZE	TYPE	SIZE	ELECTRICAL MODEL #	QUANTITY
1		HIGH EFFICIENCY	11	16"	16"	>70%	0								449 LBS

GREASE DUCT & CHIMNEY SPECIFICATIONS:
PROVIDE GREASE DUCT EQUAL TO FRANKE FOODSERVICE SYSTEMS MODEL "FRDW" ROUND 20 GAUGE 430 STAINLESS STEEL DUCTWORK. MODEL "FRDW" IS LISTED TO UL-1978 AND IS INSTALLED USING "V" CLAMP LOCKING CONNECTIONS SEALED WITH 3M FIRE BARRIER 2000 PLUS. MODEL "FRDW" DOES NOT REQUIRE WELDING PROVIDING IT HAS BEEN INSTALLED PER THE MANUFACTURES INSTALLATION GUIDE.
PROVIDE RATED ACCESS DDORS AT EVERY CHANGE IN DIRECTION AND EVERY 12' ON CENTER. PER MANUFACTURES LISTING MODEL "DW" HORIZONTAL RUNS LESS THAN 75 FT. CAN BE SLOPED 1/16" PER 12", HORIZONTAL RUNS MORE THAN 75 FT. CAN BE SLOPED 3/16" PER 12'. DUCT SHOULD BE SLOPED AS MUCH AS POSSIBLE TO REDUCE THE CHANCE OF GREASE ACCUMULATION IN HORIZONTAL RUNS.

IF THE DUCT OR CHIMNEY IS WITHIN 18 INCHES OF COMBUSTIBLE MATERIAL, PROVIDE UL-2221 OR UL-103 HT LISTED DOUBLE WALL GREASE DUCT OR DOUBLE WALL CHIMNEY EQUAL TO FRANKE FOODSERVICE SYSTEMS MODEL "FRDW"- 2R, 2R TYPE HT, 3R, OR 3Z" ROUND 20 GAUGE 430 STAINLESS INNER DUCT INSULATED WITH A 24 GAUGE 430 STAINLESS OUTER SHELL.

FRANKE FOODSERVICE SYSTEMS RECOMMENDS THE USE OF LISTED, PRE-FABRICATED ROUND GREASE EXHAUST DUCT TO REDUCE STATIC PRESSURE IN THE SYSTEM, MINIMIZE INSTALLATION AND INSPECTION TIMES, AND ENSURE DUCT IS LIQUID TIGHT

VERIFY CEILING HEIGHT

HEIGHT REQUIRED TO VERIFY THAT HOOD FITS SPACE AND TO SIZE THE ENCLOSURE PANELS

HVAC DISTRIBUTION NOTE

HIGH VELOCITY DIFFUSERS OR HVAC RETURNS SHOULD NOT BE PLACED WITHIN TEN (10) FEET OF THE EXHAUST HOOD. PERFORATED DIFFUSERS ARE RECOMMENDED.

CUSTOMER APPROVAL TO MANUFACTURE:

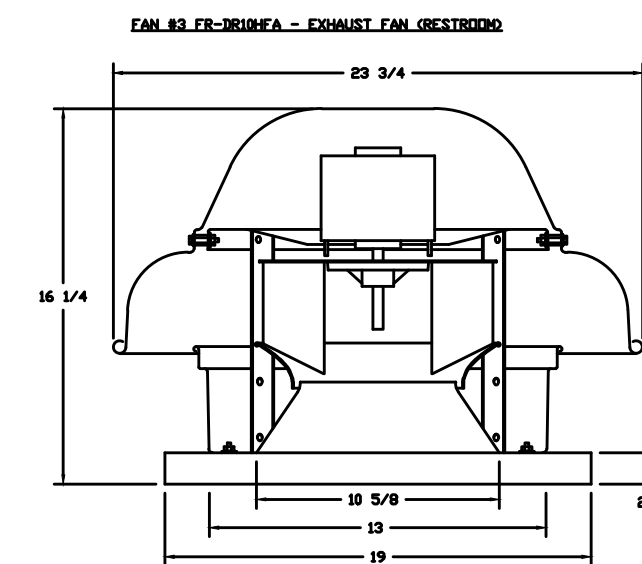
APPROVED AS NOTED ☐
APPROVED WITH NO EXCEPTION TAKEN ☐
REVISE AND RESUBMIT ☐
SIGNATURE _____
YOUR TITLE _____ DATE _____

EXHAUST FAN INFORMATION - JOB PLK PROTO

FAN UNIT NO.	TAG	QTY	FAN UNIT MODEL #	CFM	ESP	RPM	MOTOR ENCL.	HP	BHP	#	VOLT	FLA	DISCHARGE VELOCITY	WEIGHT (LBS)	SONES
3	RESTROOM	1	FR-BR10HFA	75	0.25	1015	TEAD-ECM	0.166	0.02	1	115	1.9		50	1.9

FAN UNIT NO.	TAG	QTY	DESCRIPTION											
3	RESTROOM	1	1 12-30DB DAMPER.											
3	RESTROOM	1	ECM VIBING PACKAGE - MANUAL OR 0-10VDC REFERENCE SPEED CONTROL (TELCO MOTOR), CCW ROTATION.											

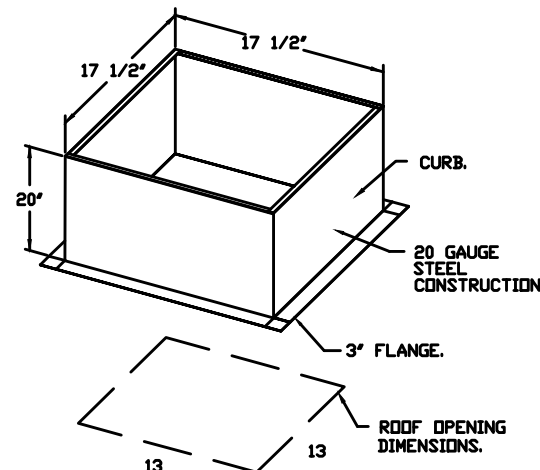
NO	ON FAN	TAG	WEIGHT	ITEM	SIZE
3	# 3	RESTROOM	25 LBS	CURB	17.500"V X 17.500"L X 20.000"H



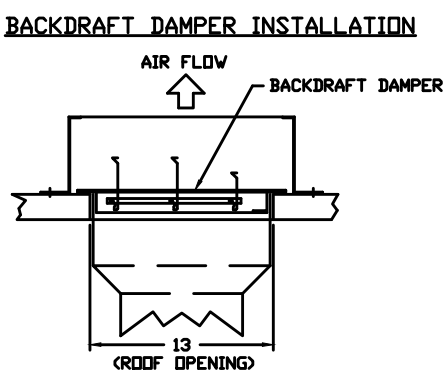
FEATURES:

- DIRECT DRIVE CONSTRUCTION ON BELTS/PULLEYS.
- ROOF MOUNTED FANS.
- UL75C.
- SAFETY DISCONNECT.
- STANDARD 30DB SCREEN.
- SPEED CONTROL.

DEFINITIONS:
1 12-30DB DAMPER.
ECM VIBING PACKAGE - MANUAL OR 0-10VDC REFERENCE SPEED CONTROL (TELCO MOTOR), CCW ROTATION.



PITCHED CURBS ARE AVAILABLE FOR PITCHED ROOFS.
SPECIFY PITCH:
EXAMPLE: 7/12 PITCH = 30° SLOPE.



CUSTOMER APPROVAL TO MANUFACTURE:

APPROVED AS NOTED ☐
APPROVED WITH NO EXCEPTION TAKEN ☐
REVISE AND RESUBMIT ☐
SIGNATURE _____
YOUR TITLE _____ DATE _____



Franke Foodser Ice Systems Americas, Inc.
800 A lation Parkway Smyrna, TN USA 371 7
Tel: 800 472-2954
e customer@ice.us www.franke.com
www.rankesupply.com

Exclusion o L.B. 819.
FRANKE takes no responsibility or the accuracy o the for plans and construction drawings. All dimensions and construction specifications y FRANKS shall e checked y the client prior to installation. Speed ratings, or power consumption and construction are limited to a upment supplied y FRANKS. All third party accessories shown he within the response. All y, the client, FRANKS, rater as the right to change e upment without notice.

Account:
POPEYES Restaurant #
PLK 2112
Title
WALL MOUNTED INSTALLATION DETAIL

Site ID
Operator
Site Address
City
State Zip Code Country
Region
Building Type
Electrical Service
Gas Service
Market Manager
Franke Project Number
Created by:
HP033
Date Issued
10/01/20
Modified By:
AM029
Drawing Scale
AS NOTED
Units
Inches
Drawing Number
Revision
A
Sheet Name
2 OF 4

ISSUE TABLE		
No.	Date (mm/dd/yy)	Description

REVISIONS

No.	Date	Description

DRAWINGS REVISED AS PER DESIGN BULLETIN

No.	Date	Description



PROJECT NORTH

THIS DRAWING IS OWNED BY OR LICENSED FOR USE BY POPEYES LOUISIANA KITCHEN (OR ITS AFFILIATED OR RELATED COMPANIES) AND MAY NOT BE REPRODUCED, USED, DOWNLOADED, DISSEMINATED, PUBLISHED, OR TRANSFERRED IN ANY FORM OR BY ANY MEANS, EXCEPT WITH THE PRIOR WRITTEN CONSENT OF POPEYES LOUISIANA KITCHEN. COPYRIGHT INFRINGEMENT IS A VIOLATION OF FEDERAL LAW SUBJECT TO CRIMINAL AND CIVIL PENALTIES.

THE CONTRACTOR IS TO VERIFY ALL DIMENSIONS AND CONDITIONS ON THE PROJECT AND TO REPORT ANY DISCREPANCIES TO THE POPEYES LOUISIANA KITCHEN REPRESENTATIVE PRIOR TO COMMENCING WORK. THESE DRAWINGS ARE NOT TO BE USED FOR CONSTRUCTION PURPOSES UNLESS INDICATED BY POPEYES LOUISIANA KITCHEN. AS ISSUED FOR CONSTRUCTION.

rchitrave GROUP PC
157 Broad Street - Suite 4107
Red Bank, NJ 08067
(732) 212-0097 Fax (732) 212-0059
JOSE C. SANTOS, RA - NJ A18745
NY 10006 DE 55-0007774
VA 01802 NC 12660NF 52665
SCHULTZ ENGINEERING GROUP
212 N. McDowell St, Suite 204
Charlotte, NC 28204
(P) 704.334.7363 (F) 704.347.0093
www.shultzeng.com | SEG - 23-436
NC FIRM LICENSE NUMBER: C-08598
PM: DD M: JTM E: RR P: GR



POPEYES

Store Type	US 2112 PROTOTYPE 2112-21	
Location	PROTOTYPE 2112 (U.S.) 503 W. 3RD STREET PEMBROKE, NORTH CAROLINA	
Drawing Title	MECHANICAL HOOD DRAWINGS	
Drawn	Checked	
Scale	Date	8/11/23
Project No.	Drawing No.	M3.2

4 EXHAUST FAN DATA
2 SCALE: NO SCALE

3 EXHAUST HOOD DATA
2 SCALE: NO SCALE

5 RESTROOM EXHAUST FAN DATA
2 SCALE: NO SCALE

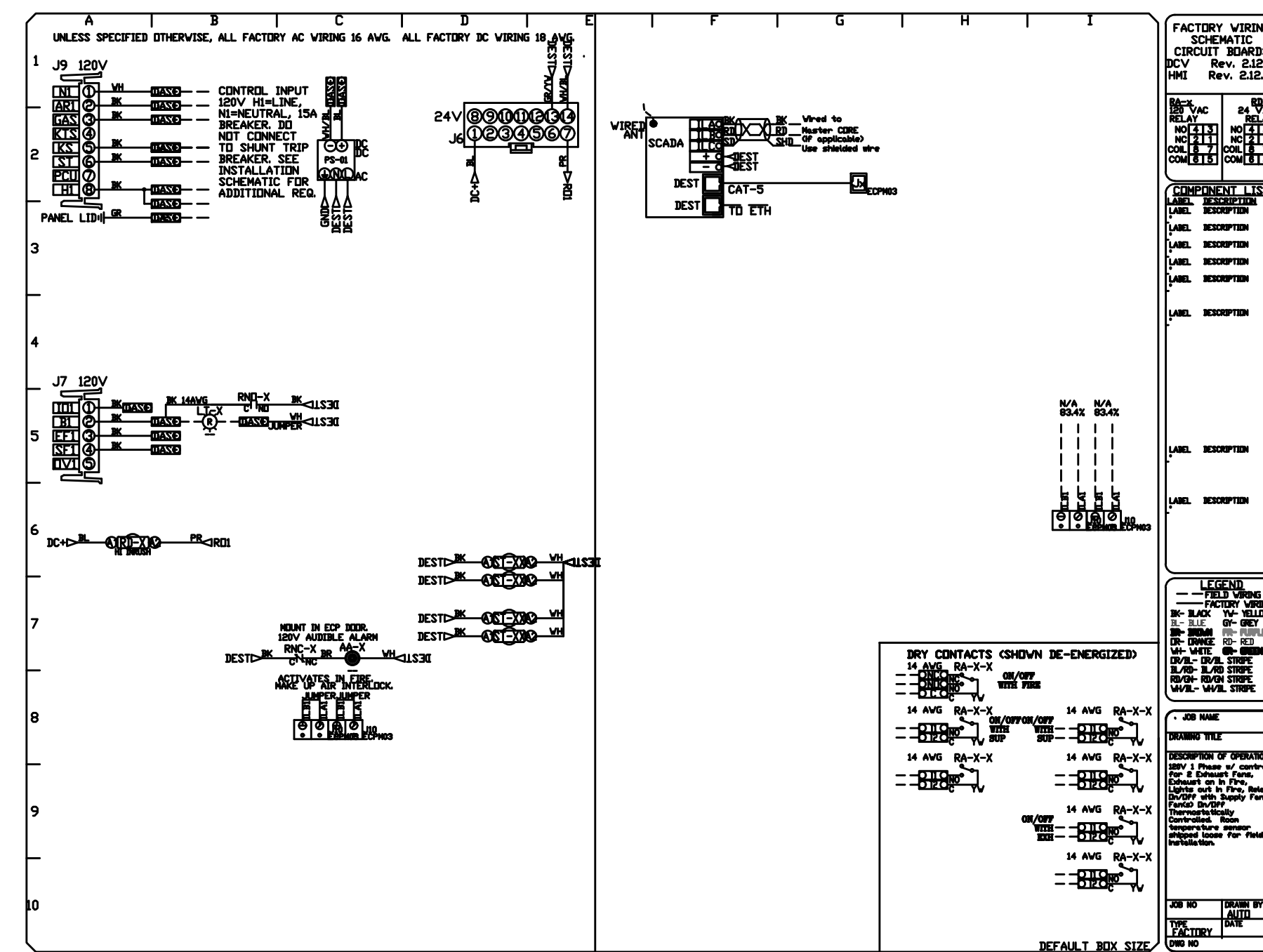
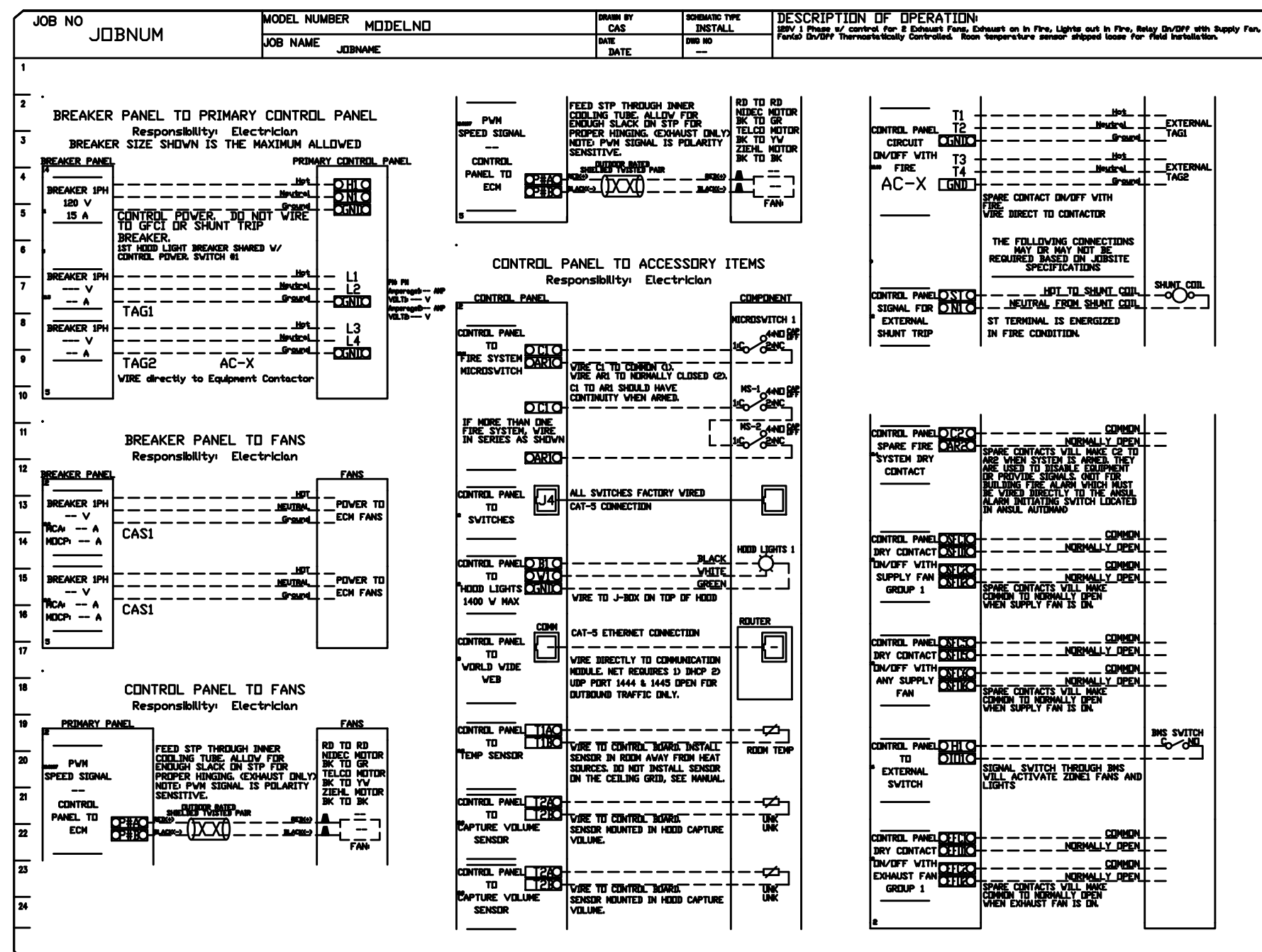
POPEYES LOUISIANA KITCHEN MODEL 2112, 503 W. 3RD STREET, PEMBROKE, NC: 2124 PROTOTYPE DOCUMENTS STORE NO. 14185

NO	TAG	PACKAGE #	LOCATION	SWITCHES		OPTION	FANS CONTROLLED					
				LOCATION	QUANTITY		FAN TAG	TYPE	HP	VOLTS	FLA	
1		SC-120110MA-NA4	WALL MOUNT IN SS BOX	05 - SS WALL MOUNT BOX	1 LIGHT 1 FAN	SMART CONTROLS THERMOSTATIC CONTROL V/ RELAY ON/OFF WITH SUPPLY	EF-LEFT EXHAUST	EF-RIGHT EXHAUST	1.0500	115	6.3	6.3

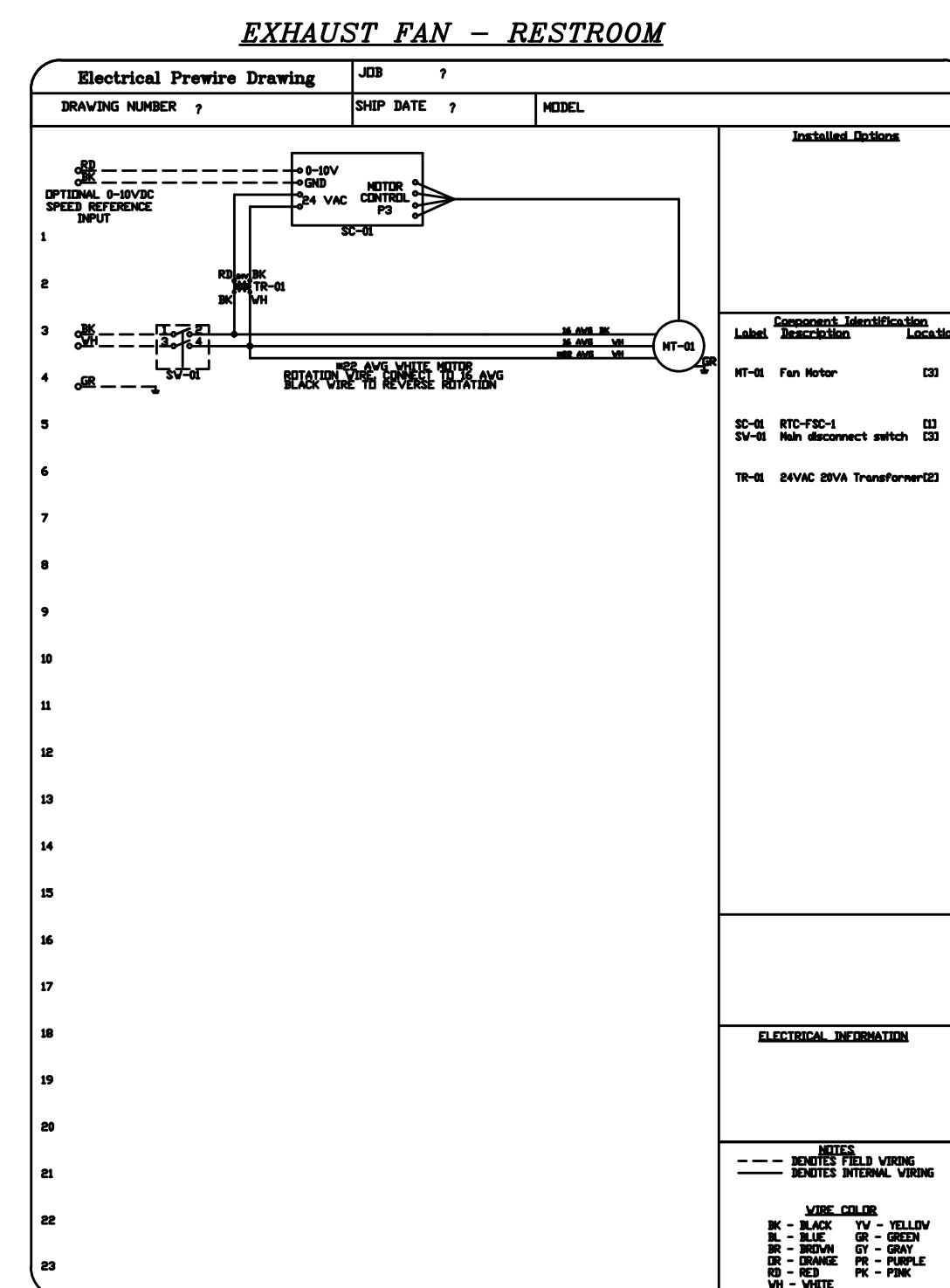
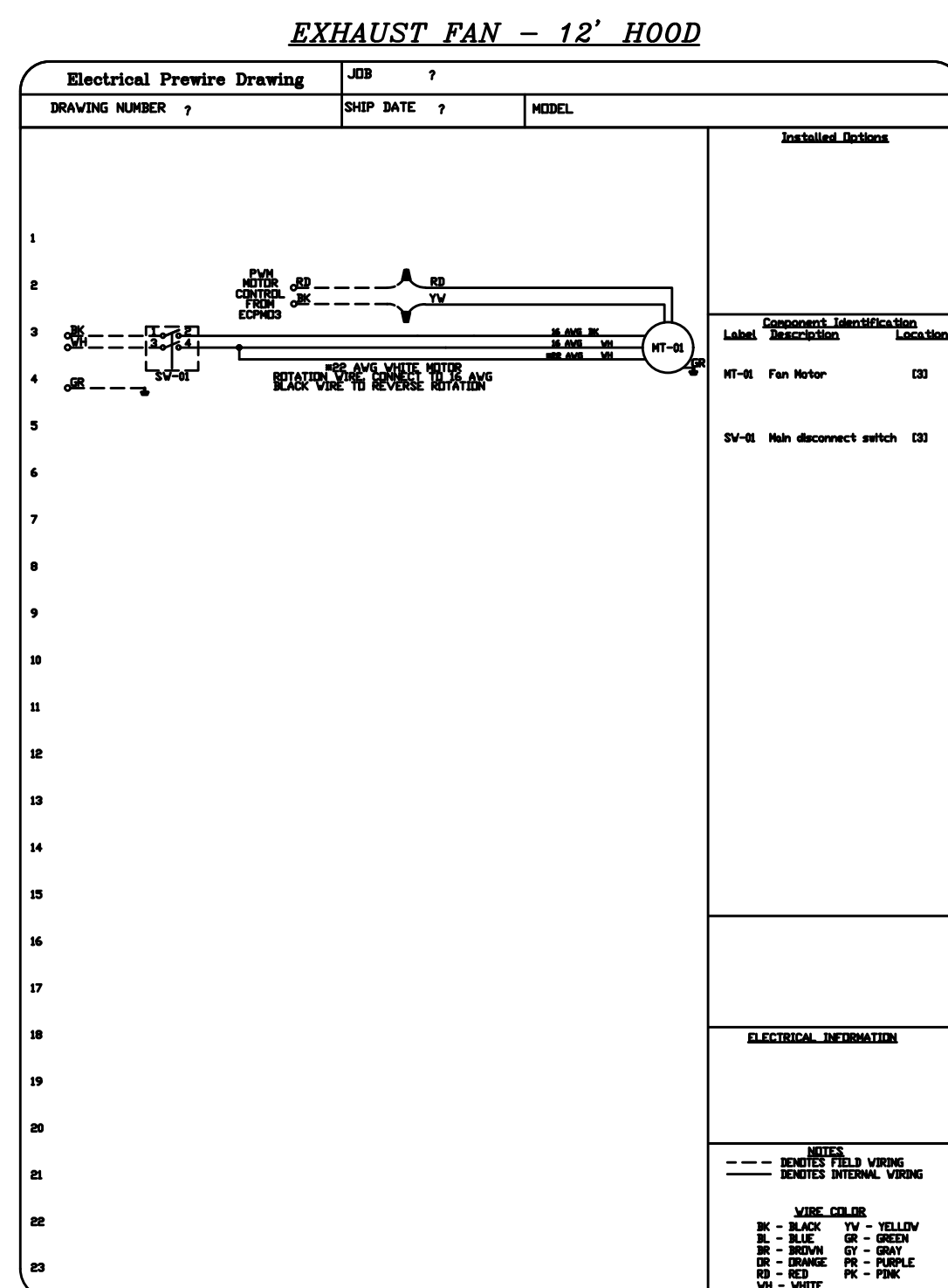
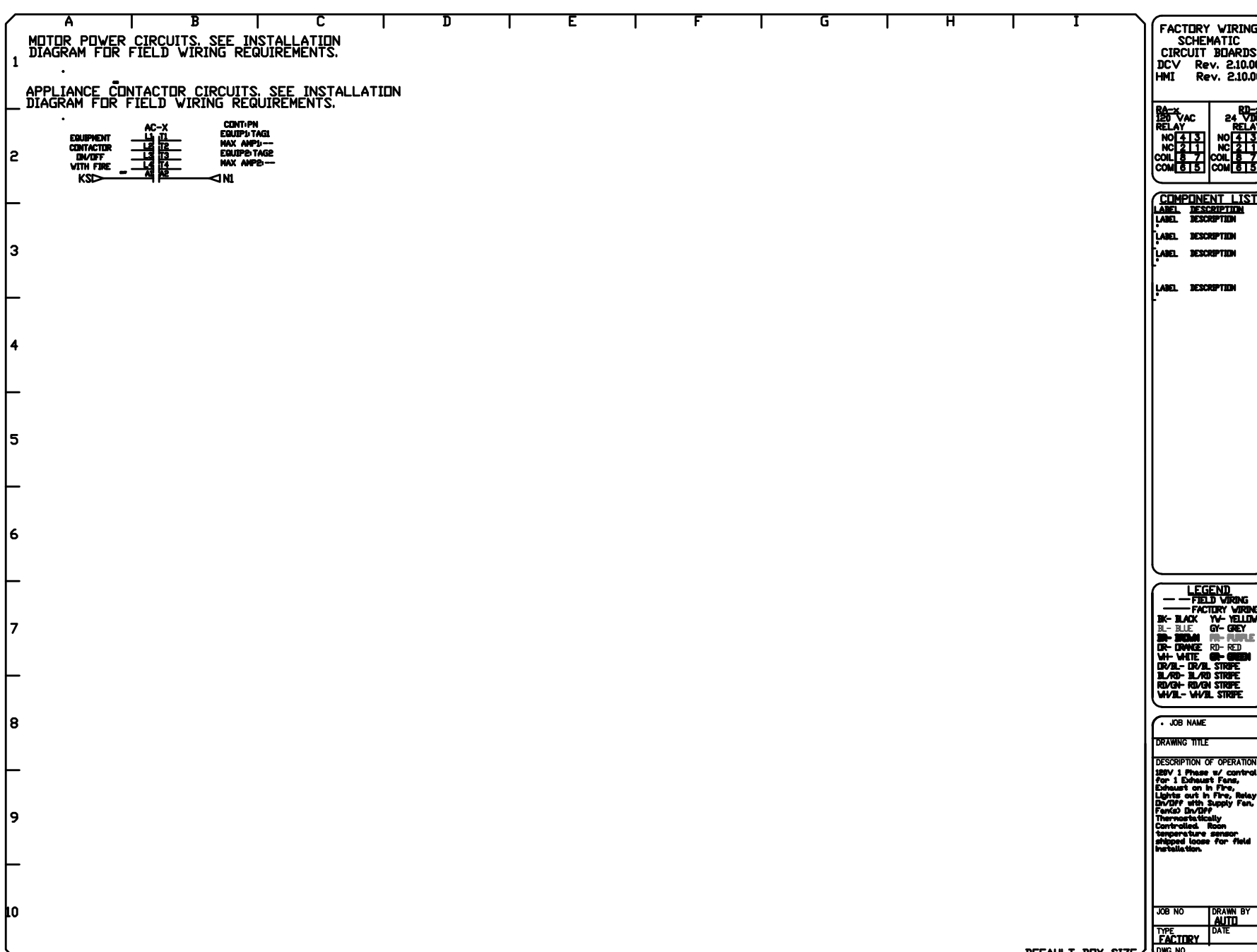


MONITORING AND CONTROL POINTS LIST

Room Temperature	Position	EC Position	Position
Room Temperature	00070708	Room Temperature(s)	00070708
Dust Temperature(s)	00070708	Dust Temperature(s)	00070708
Still Air Temperature	00070708	Still Air/Room Temperature	00070708
Relative Humidity Air Temperature	00070708	Relative Humidity Air Temperature	00070708
Ice Speed	00070708	Controlled Panels	00070708
Ice Density	00070708	Ice Panels	00070708
Ice Power	00070708	Ice Switch	00070708
VPF Panels	00070708	VPF Panels	00070708
Controlled Panels	00070708	VPF Motor Clap Permeable	00070708
Ice Panels	00070708	Ice Connections	00070708
Ice Shields	00070708	OSSE Pipe System	00070708
VPF Panels	00070708	Building Processes	00070708
VPF Panels	00070708	Ice Panels(s)	00070708 & CONTROL
Ice Connections	00070708	Lighting System(s)	00070708 & CONTROL
Ice Connections	00070708	Lighting System(s)	00070708 & CONTROL
OSSE Pipe System	00070708	Ice Panels	00070708 & CONTROL
Building Processes	00070708		
Prop Time Tables	00070708 & CONTROL		
Prop Time Tables	00070708 & CONTROL		
Lighting System	00070708 & CONTROL		
Ice Panels	00070708 & CONTROL		
Ice Panels	00070708 & CONTROL		



CONTROL SCHEMATIC – EXHAUST FANS

[illegible][illegible][illegible]

DRAWINGS REVISED AS PER DESIGN BULLETIN		
No.	Date	Description



THIS DRAWING IS OWNED BY OR LICENSED FOR USE BY POPEYES LOUISIANA KITCHEN (OR ITS AFFILIATED OR RELATED COMPANIES) AND MAY NOT BE REPRODUCED, USED, DOWNLOADED, DISSEMINATED, PUBLISHED, OR TRANSFERRED IN ANY FORM OR BY ANY MEANS, EXCEPT WITH THE PRIOR WRITTEN CONSENT OF POPEYES LOUISIANA KITCHEN. COPYRIGHT INFRINGEMENT IS A VIOLATION OF FEDERAL LAW SUBJECT TO CRIMINAL AND CIVIL PENALTIES.

THE CONTRACTOR IS TO VERIFY ALL DIMENSIONS AND CONDITIONS ON THE PROJECT AND TO REPORT ANY DISCREPANCIES TO THE POPEYES LOUISIANA KITCHEN REPRESENTATIVE PRIOR TO COMMENCING WORK. THESE DRAWINGS ARE TO BE USED ONLY FOR THE PROJECT SPECIFICALLY IDENTIFIED BY POPEYES LOUISIANA KITCHEN AS "ISSUED FOR CONSTRUCTION".

THE CONTRACTOR IS TO VERIFY ALL DIMENSIONS AND CONDITIONS ON THE PROJECT AND TO REPORT ANY DISCREPANCIES TO THE POPEYES LOUISIANA KITCHEN REPRESENTATIVE PRIOR TO COMMENCING WORK. THESE DRAWINGS ARE NOT TO BE USED FOR CONSTRUCTION PURPOSES UNLESS INDICATED BY POPEYES LOUISIANA KITCHEN AS "ISSUED FOR CONSTRUCTION".

FRANKE

Franke Foodservice Systems
Americas, Inc.
800 A lation Parkway
Smyrna, TN USA 371 7
Tel. 800 472-2954
s customerservice.us ranke.com
www.ranke.com

2021 Frankie Foodster Ice Americas, Inc.
These drawings and specifications are the property of Frankie Technology and Trademark Ltd. and shall not be reproduced, copied or transmitted to any third party without the prior written permission of Frankie Technology and Trademark Ltd., Hergswil, Switzerland.

Account: POPEYES
Restaurant # PLK 2112
Title WALL MOUNTED
INSTALLATION DETAIL


Operator			
Site Address			
City			
State	Zip Code	Country	
Region			

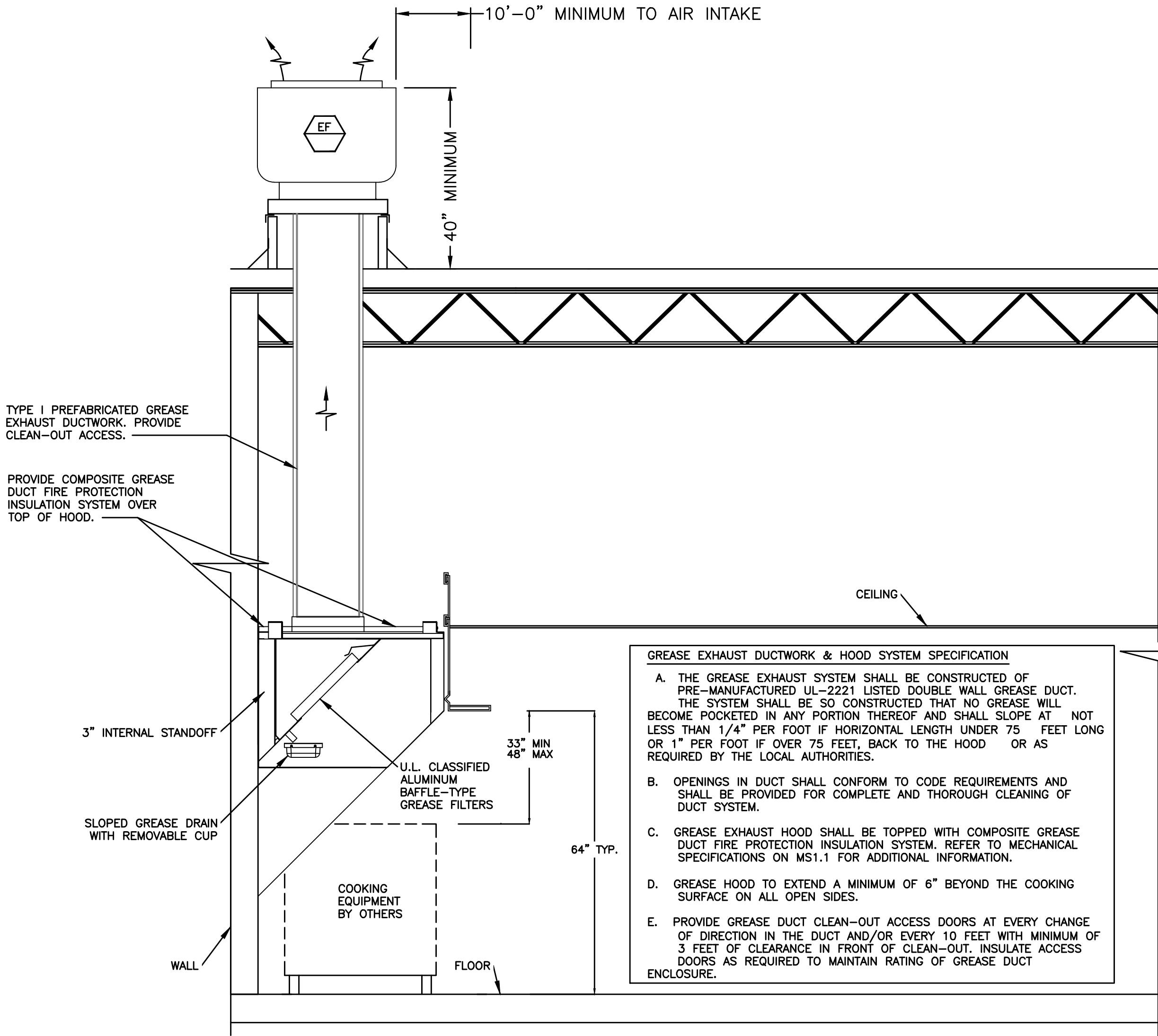
-	Electrical Service
-	Gas Service
-	Market Manager
-	Franke Project Number

Created by: HP033	
Date Issued 10/01/20	
Modified By: AM029	
Drawing Scale AS NOTED	
Units INCHES	Revision
Drawing Number -	A

Revision

3 OF 4

Project	
	
POPEYES	
Store Type	
US 2112 PROTOTYPE 2112-21	
Location	
PROTOTYPE 2112 (U.S.) 503 W. 3RD STREET PEMBROKE, NORTH CAROLINA	
Drawing Title	
MECHANICAL HOOD DRAWINGS	
Drawing	Checked
Scale	Date
	8/11/23
Project No.	Drawing No.
G23-29	M3.3

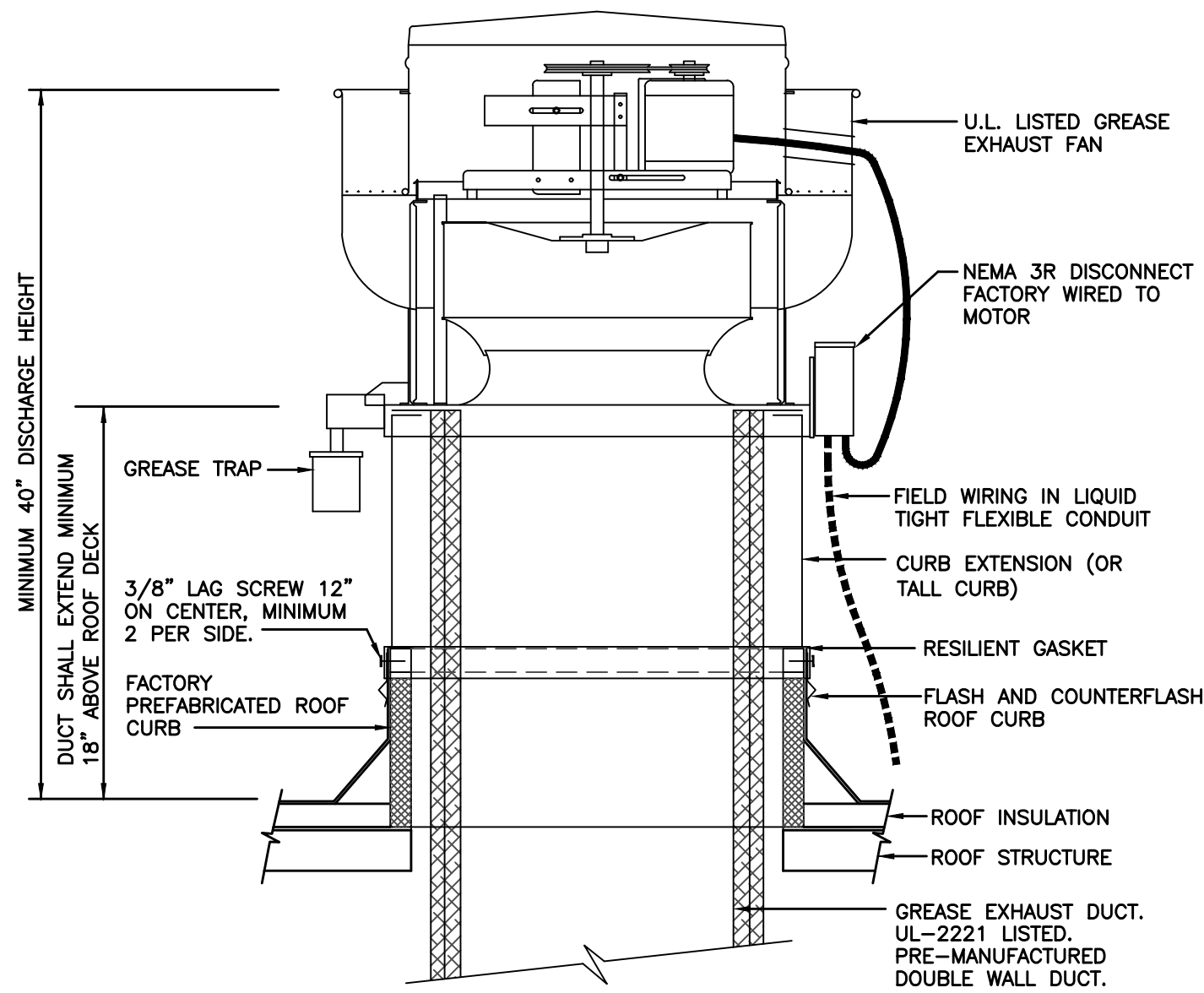


NOTES:

1. PROVIDE UL LISTED TYPE 1 EXHAUST HOOD.
2. GREASE HOOD SHALL MEET THE REQUIREMENTS OF MECHANICAL CODE, NSF AND NFPA FOR A TYPE I HOOD.
3. FIRE DEPARTMENT APPROVAL SHALL BE REQUIRED ON FIRE PROTECTION SYSTEM FOR GREASE HOODS AND DUCTS AS REQUIRED BY MECHANICAL AND FIRE CODES.
4. PROVIDE CHEMICAL FIRE SUPPRESSION SYSTEM AS REQUIRED BY NFPA 17A.
5. PERFORM SMOKE TEST ON GREASE EXHAUST DUCTWORK AFTER DUCTWORK INSTALLATION IS COMPLETE BUT PRIOR TO DUCTWORK CONCEALMENT PER REQUIREMENTS OF LOCAL CODE AUTHORITIES.

05 KITCHEN HOOD SCHEMATICS

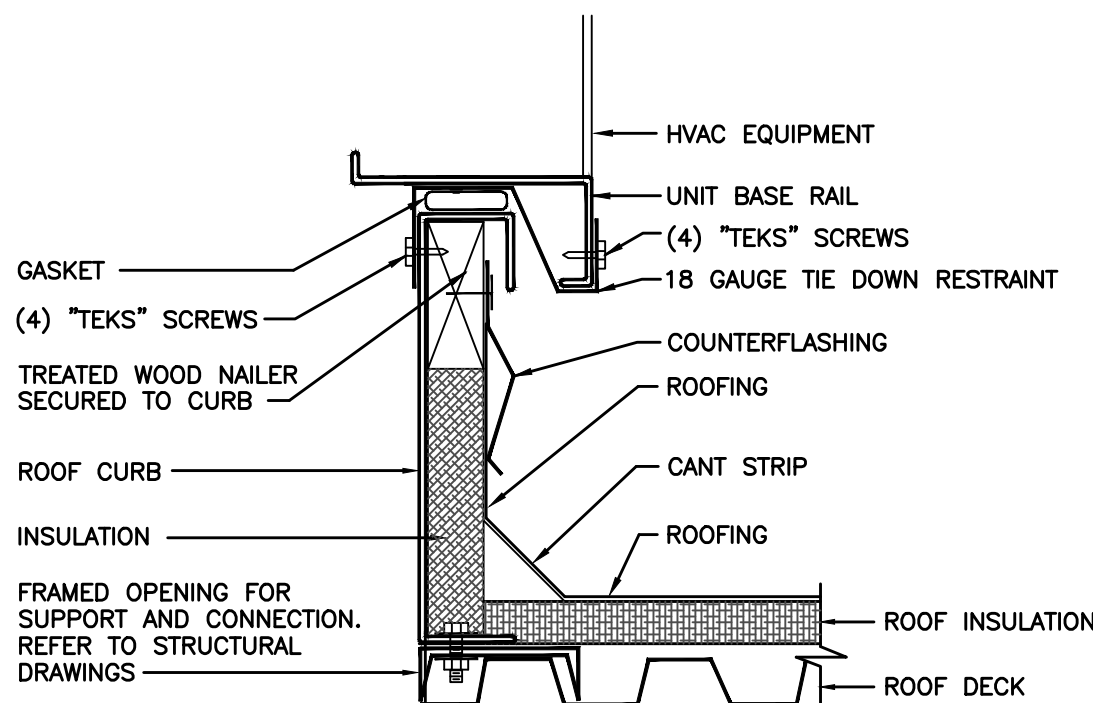
NOT TO SCALE



NOTE: INSTALLATION SHALL BE IN ACCORDANCE WITH NFPA 96 REQUIREMENTS.

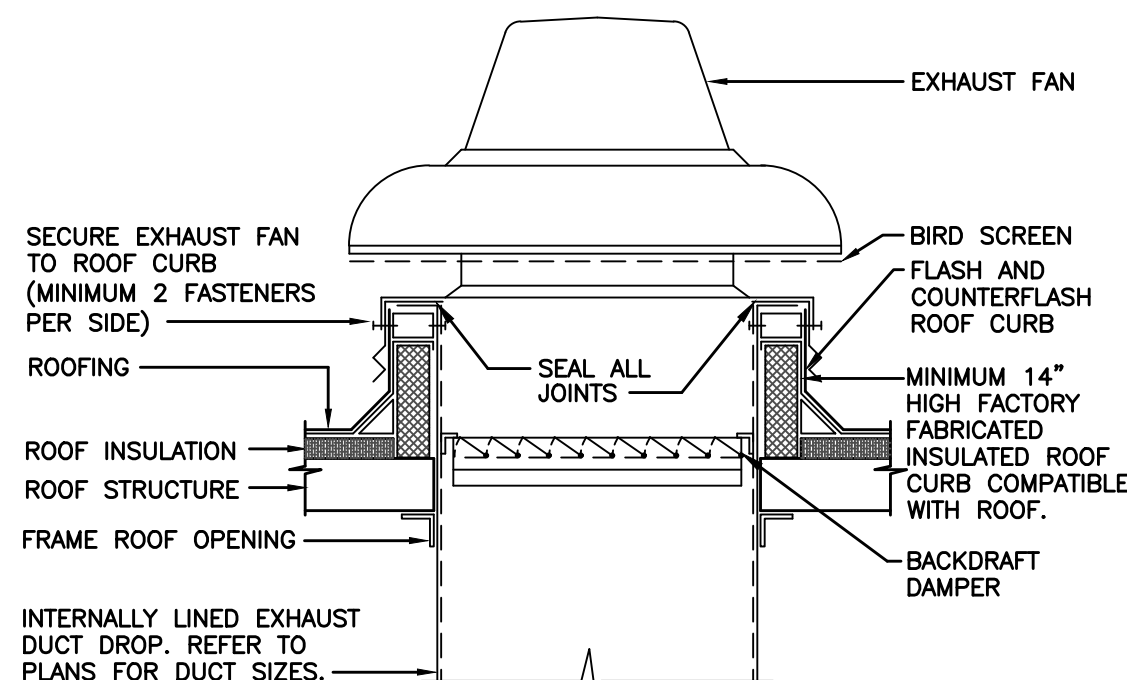
01 ROOF MOUNTED GREASE EXHAUST FAN DETAIL

NOT TO SCALE



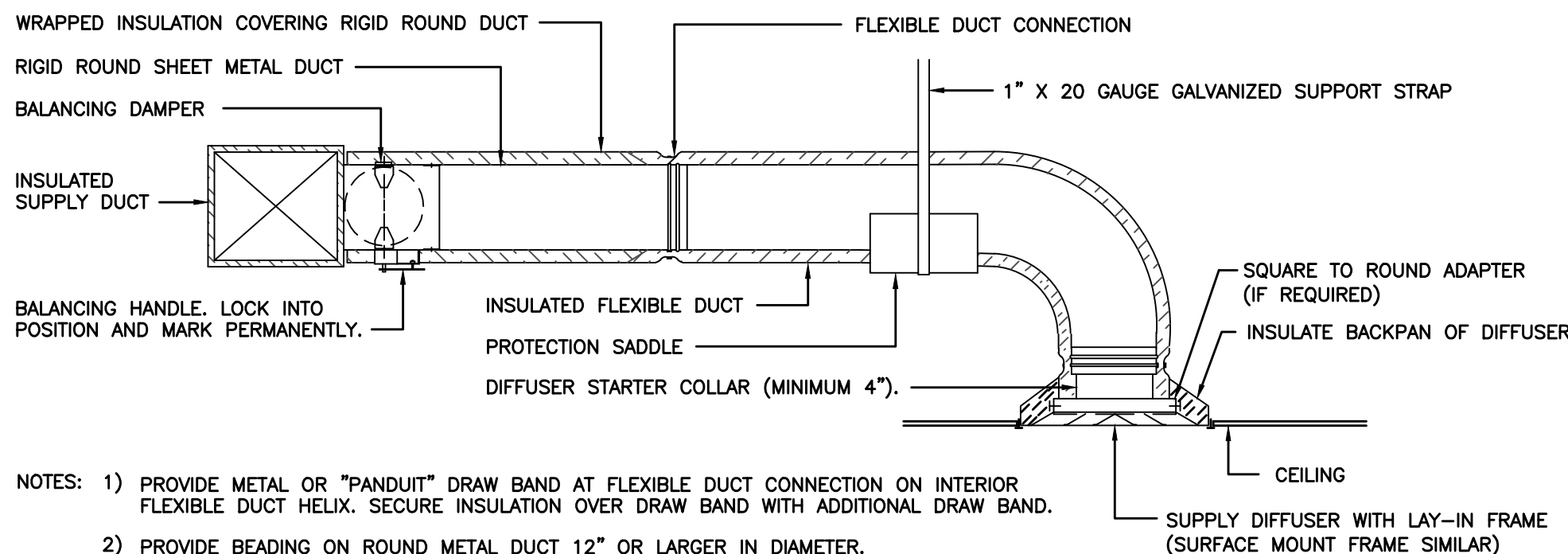
03 ROOFTOP UNIT CURB DETAIL

NOT TO SCALE



02 EXHAUST FAN DETAIL

NOT TO SCALE



- NOTES:
- 1) PROVIDE METAL OR "PANOUT" DRAW BAND AT FLEXIBLE DUCT CONNECTION ON INTERIOR FLEXIBLE DUCT HELIX. SECURE INSULATION OVER DRAW BAND WITH ADDITIONAL DRAW BAND.
 - 2) PROVIDE BEADING ON ROUND METAL DUCT 12" OR LARGER IN DIAMETER.
 - 3) PROVIDE MINIMUM 4" COLLARS FOR ATTACHMENT OF FLEXIBLE DUCT TO ROUND DUCT, DAMPERS AND DIFFUSERS.
 - 4) BAND RIGID ROUND DUCT INSULATION TO DUCT AND PROVIDE TAPE FOR INSULATION OVERLAP.

04 DIFFUSER CONNECTION DETAIL

NOT TO SCALE

ISSUE TABLE		
No.	Date (mm/dd/yy)	Description

REVISIONS		
No.	Date	Description

DRAWINGS REVISED AS PER DESIGN BULLETIN		
No.	Date	Description



PROJECT NORTH

THIS DRAWING IS OWNED BY OR LICENSED FOR USE BY POPEYES LOUISIANA KITCHEN OR ITS AFFILIATED OR RELATED COMPANIES AND MAY NOT BE REPRODUCED, USED, DOWNLOADED, DISSEMINATED, PUBLISHED, OR TRANSFERRED IN ANY FORM OR BY ANY MEANS, EXCEPT WITH THE PRIOR WRITTEN CONSENT OF POPEYES LOUISIANA KITCHEN. COPYRIGHT INFRINGEMENT IS A VIOLATION OF FEDERAL LAW SUBJECT TO CRIMINAL AND CIVIL PENALTIES.

THE CONTRACTOR IS TO VERIFY ALL DIMENSIONS AND CONDITIONS ON THE PROJECT AND TO REPORT ANY DISCREPANCIES TO THE POPEYES LOUISIANA KITCHEN REPRESENTATIVE PRIOR TO COMMENCING WORK. THESE DRAWINGS ARE NOT TO BE USED FOR CONSTRUCTION PURPOSES UNLESS INDICATED BY POPEYES LOUISIANA KITCHEN AS ISSUED FOR CONSTRUCTION.

architrave GROUP P.C.
167 Broad Street - Suite 107
Roxbury, MA 02119
Phone (732) 212-0059 Fax (732) 212-0059
JOSE C. SANTOS, RA - NJ A118745
NY 03506 DE 55-060771
VA 015922 NC 12206CF 52865

SHULTZ ENGINEERING GROUP
212 N. McDowell St, Suite 204
Charlotte, NC 28204
(P) 704.334.7363 (F) 704.347.0093
www.shultzeg.com | SEG - 23-436
NC FIRM LICENSE NUMBER: C-0898
PM: DD M: JTM E: RR P: GR



Project

LOUISIANA KITCHEN

POPEYES

Store Type

US 2112 PROTOTYPE
2112-21

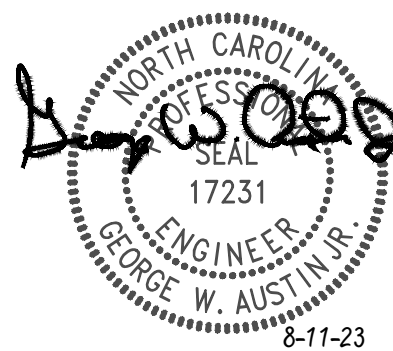
Location

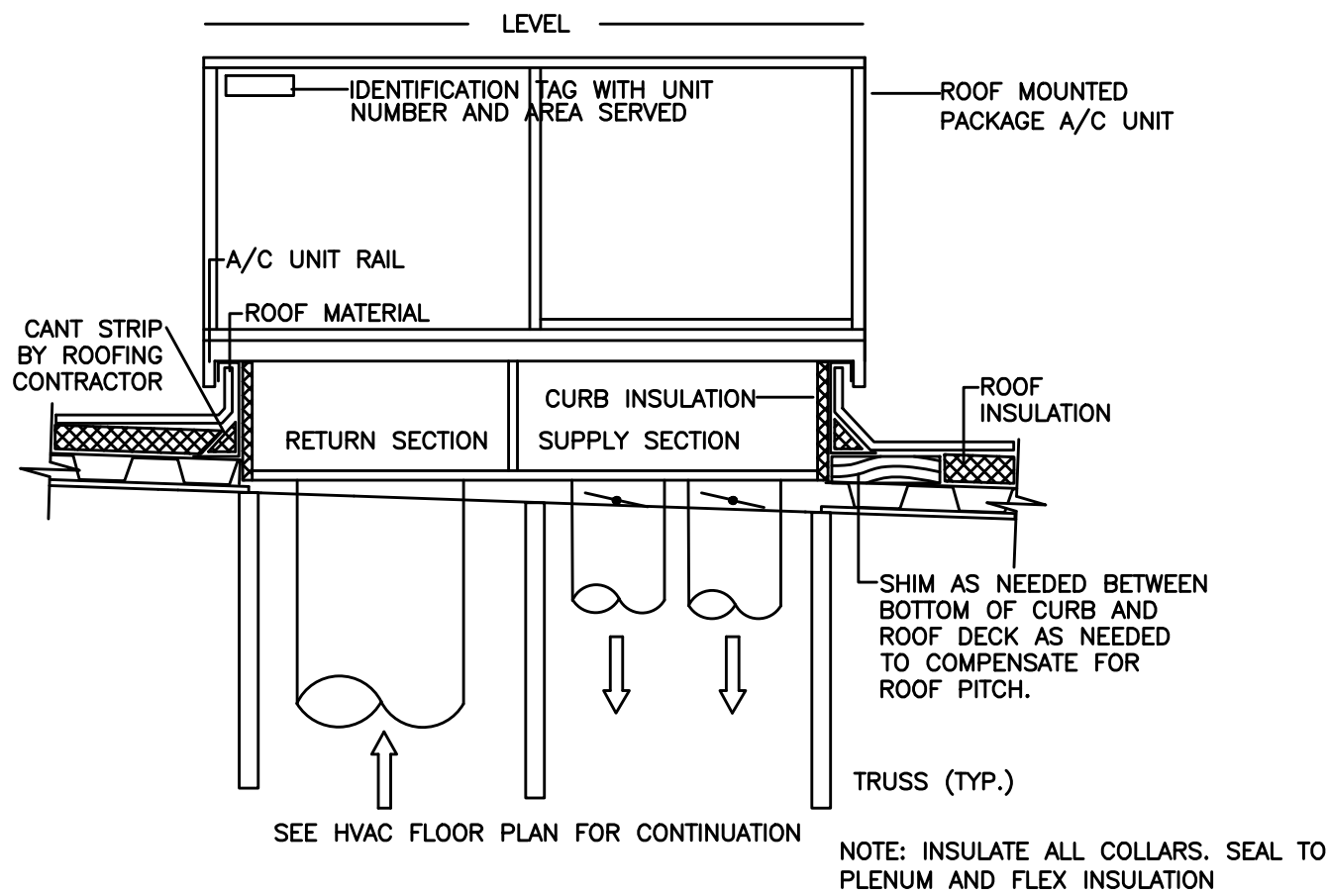
PROTOTYPE 2112 (U.S.)
503 W. 3RD STREET
PEMBROKE, NORTH CAROLINA

Drawing Title

MECHANICAL DETAILS

Drawn	JTM	Checked	JS
Scale		Date	8/11/23
Project No.	G23-29	Drawing No.	M4.1





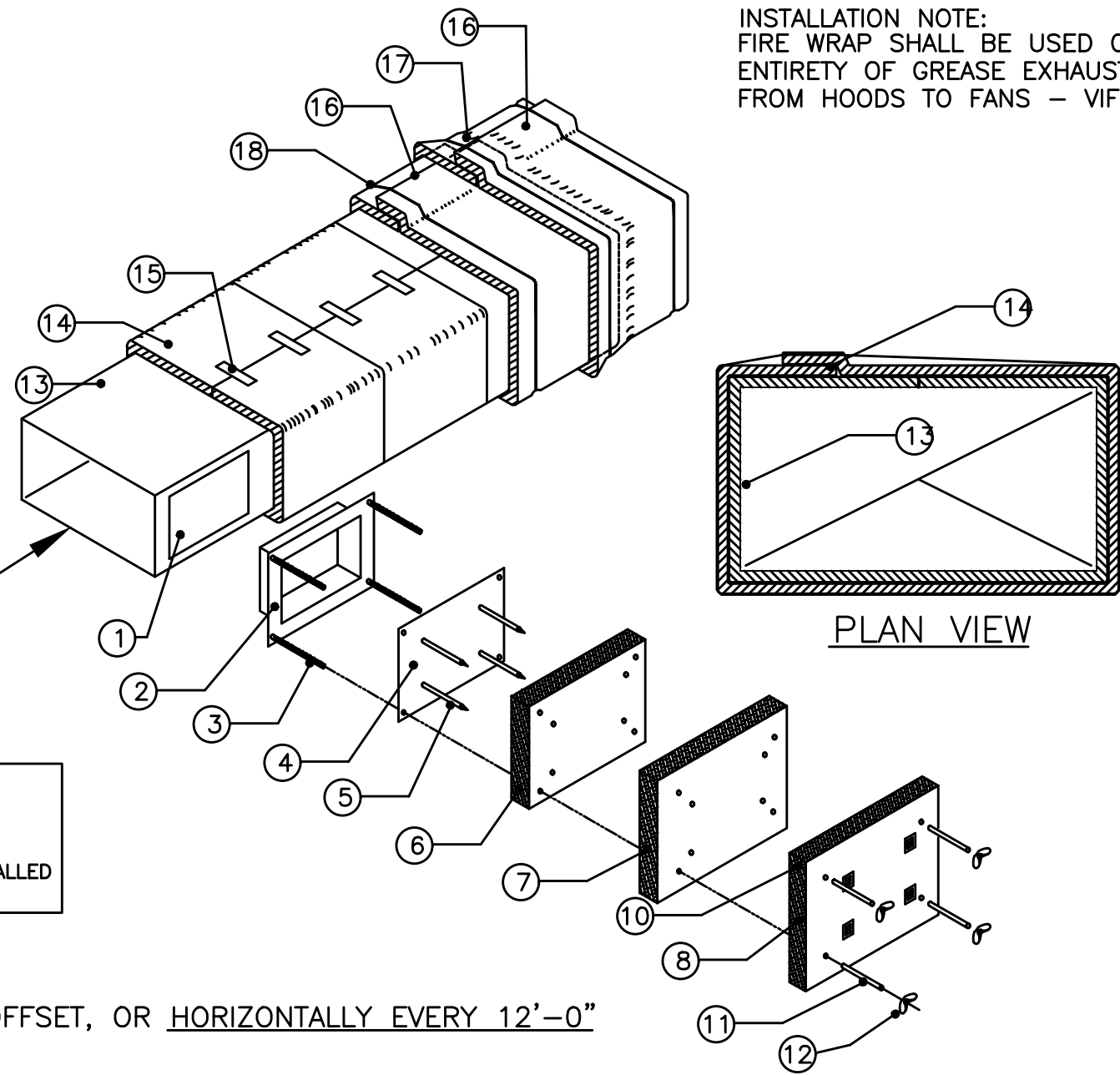
01 DUCT RISER/LEVELING DETAIL
NOT TO SCALE

LEGEND	
1	DOOR HOLE
2	ACCESS FRAME WELDED TO DUCT
3	1/4" DIA. ALL THREAD RODS
4	ACCESS COVER; 16 GA.
5	INSULATION PINS; WELDED
6	1 3M FIRE BARRIER 615 PLUS
7	1 3M FIRE BARRIER 615 PLUS 1" OVERLAP
8	1 3M FIRE BARRIER 615 PLUS 1" OVERLAP
9	SPEED CLIPS
10	ALUMINUM TAPE EDGES
11	SPOOL PIECES FOR THREADED RODS
12	1/4" DIA. WING NUTS
13	16 GA. SHEET METAL DUCT (FULLY WELDED WATER TIGHT)
14	1ST LAYER 3M FIRE BARRIER DUCT WRAP 615 PLUS LONGITUDINAL JOINT BUTT OR MIN. 3" OVERLAP ON INNER LAYER, MIN. 3" OVERLAP ON OUTER LAYER
15	3/4" (19mm) WIDE FILAMENT TAPE
16	2ND LAYER 3M FIRE BARRIER DUCT WRAP 615 PLUS OR APPROVED EQUIVALENT
17	3" MINIMUM PERIMETER OVERLAP - TYP.
18	STEEL BANDING 1/2" WIDE MIN. TYP. FOR PERMANENT FASTENING

FULLY WELDED GREASE RATED EXHAUST DUCT. SEE SIZE ON PLAN. RISER SHALL BE LIGHT INSPECTED LAYING ON FLOOR. FULLY PREPARE FOR SCHEDULED INSPECTION. HVAC CONTRACTOR SHALL VERIFY TEST PRIOR TO SCHEDULE. THE USE OF U.L. LISTED PREFABBED DUCT BY CAPTIVE AIR. INSTALLED CORRECTLY MAY BE EXEMPT FROM LIGHT INSPECTION IF USED.

NOTE: ACCESS DOOR NOT REQUIRED UNLESS OFFSET, OR HORIZONTALLY EVERY 12'-0"

02 1 HR. FIRE WRAP ('0' CLEARANCE) TO COMBUSTIBLES - INSTALLATION DETAIL
NOT TO SCALE

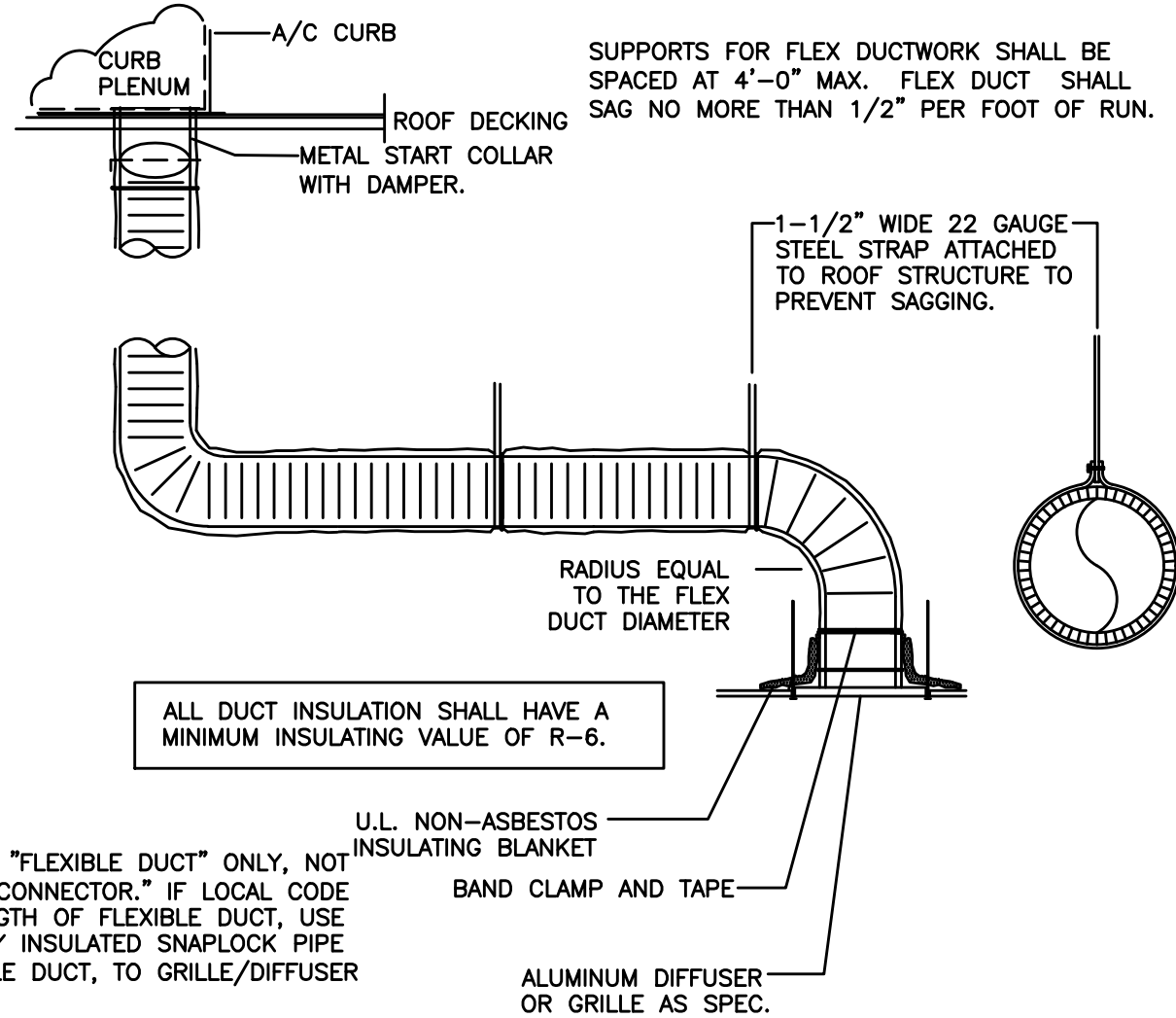


INSTALLATION NOTE:
FIRE WRAP SHALL BE USED ON ENTIRETY OF GREASE EXHAUST RISERS, FROM HOODS TO FANS - VIF

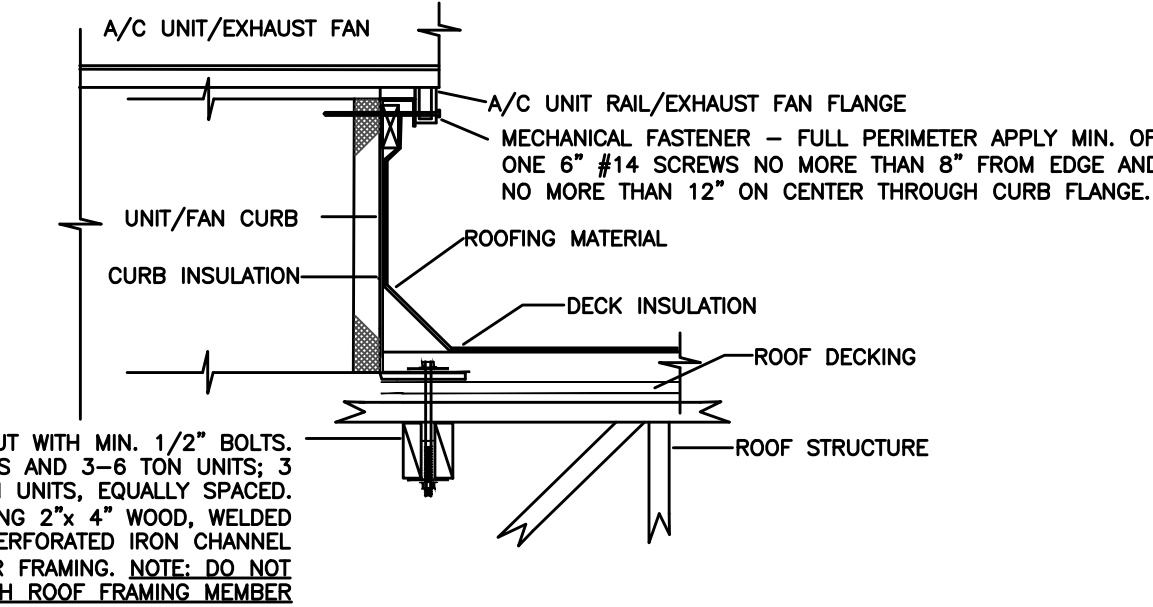
DUCT SCHEDULE	
SIZE	GAUGE
6" - 8"	28
10" - 12"	26
14" - 16"	24
18" - 20"	22

DUCT SUPPORT
SUPPORT DUCTWORK WITH 1-1/2" WIDE 22 GAUGE STEEL STRAPS FIRMLY ATTACHED TO THE BUILDING STRUCTURE. SPACING SHALL BE MAXIMUM 10'-0" FOR RIGID DUCTWORK, AND MINIMUM 4'-0" FOR FLEXIBLE DUCTWORK. 12 GAUGE WIRE MAY BE SUBSTITUTED FOR STRAPS IF 1-1/2" WIDE 22 GAUGE STEEL SADDLES ARE USED TO FULLY ENCIRCLE DUCT. REFER TO THE HVAC DUCT CONSTRUCTION STANDARDS PUBLISHED BY SMACNA FOR ADDITIONAL DETAILS. FULLY COMPLY WITH MECHANICAL CODES.

03 RIGID/FLEXDUCT CONNECTION/INSTALL DETAIL
NOT TO SCALE



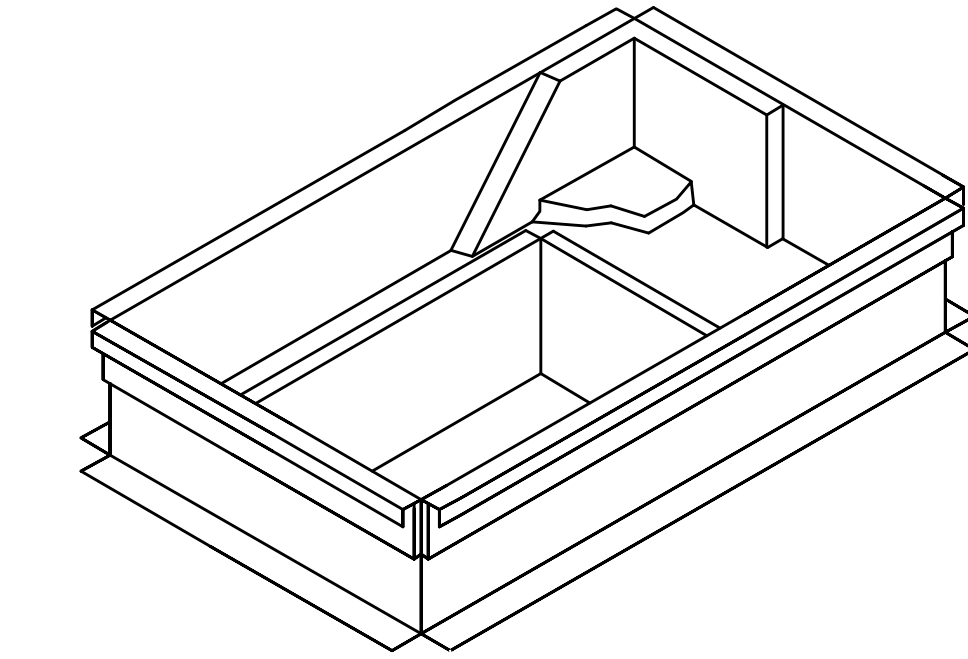
NOTE: USE "FLEXIBLE DUCT" ONLY, NOT "FLEXIBLE CONNECTOR." IF LOCAL CODE LIMITS LENGTH OF FLEXIBLE DUCT, USE EXTERNALLY INSULATED SNAPLOCK PIPE TO FLEXIBLE DUCT, TO GRILLE/DIFFUSER



ACCEPTABLE FOR 140 MPH ZONE

VERIFY ON SITE WITH GENERAL CONTRACTOR

04 ROOF EQUIP. CURB MOUNTING DETAIL
NOT TO SCALE ACCEPTABLE FOR 140 MPH ZONE



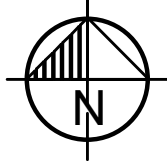
FACTORY CURB CONVERSION SHALL NOT BE ACCEPTED.

05 NCA PLENUMIZED AC CURB DETAIL
NOT TO SCALE

ISSUE TABLE		
No.	Date (mm/dd/yy)	Description

REVISIONS		
No.	Date	Description

DRAWINGS REVISED AS PER DESIGN BULLETIN		
No.	Date	Description



PROJECT NORTH

THIS DRAWING IS OWNED BY OR LICENSED FOR USE BY POPEYES LOUISIANA KITCHEN OR ITS AFFILIATED OR RELATED COMPANIES AND MAY NOT BE REPRODUCED, USED, DOWNLOADED, DISSEMINATED, PUBLISHED, OR TRANSFERRED IN ANY FORM OR BY ANY MEANS, EXCEPT WITH THE PRIOR WRITTEN CONSENT OF POPEYES LOUISIANA KITCHEN. COPYRIGHT INFRINGEMENT IS A VIOLATION OF FEDERAL LAW SUBJECT TO CRIMINAL AND CIVIL PENALTIES.

THE CONTRACTOR IS TO VERIFY ALL DIMENSIONS AND CONDITIONS ON THE PROJECT AND TO REPORT ANY DISCREPANCIES TO THE POPEYES LOUISIANA KITCHEN REPRESENTATIVE PRIOR TO COMMENCING WORK. THESE DRAWINGS ARE NOT TO BE USED FOR CONSTRUCTION PURPOSES UNLESS INDICATED BY POPEYES LOUISIANA KITCHEN AS "ISSUED FOR CONSTRUCTION."

Architrave
GROUP PC
167 Broad Street - Suite 07
Red Bank, New Jersey 07701
Phone (732) 212-0007 Fax (732) 212-0059
JOSE C. SANTOS, RA - NJ A118745
NY 03506 DE 54-060771
VA 015922 NC 12260CF 52865

SHULTZ ENGINEERING GROUP
212 N. McDowell St, Suite 204
Charlotte, NC 28204
(P) 704.334.7363 (F) 704.347.0093
www.shultzeg.com | SEG - 23-436
NC FIRM LICENSE NUMBER: C-0898
PM: DD M: JTM E: RR P: GR

LOUISIANA
KITCHEN

POPEYES

Store Type

US 2112 PROTOTYPE
2112-21

Location

PROTOTYPE
2112 (U.S.)
503 W. 3RD STREET
PEMBROKE, NORTH CAROLINA

Drawing Title

MECHANICAL DETAILS

Drawn

DD

Checked

DD

Scale

Date

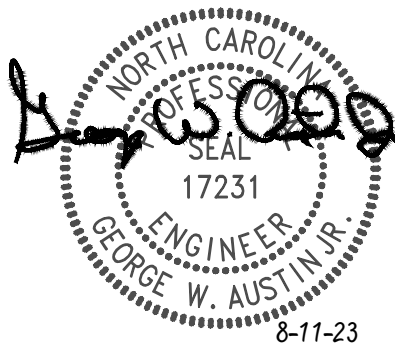
8/11/23

Project No.

G23-29

Drawing No.

M4.2



HVAC SEQUENCE OF OPERATIONS

PROVIDE ALL NECESSARY SENSORS, DAMPER ACTUATORS, CONTROL TRANSFORMERS WITH SECONDARY OVERLOAD PROTECTION, WIRING AND CONDUIT TO ACCOMPLISH FOLLOWING SEQUENCE OF OPERATION:

ROOFTOP UNIT:

THERMOSTATS SHALL BE SET TO DETERMINE OCCUPIED AND UNOCCUPIED HOURS OF OPERATION. HOURS SHALL BE COORDINATED WITH OWNER. ROOFTOP UNITS SHALL BE INTERLOCKED WITH KITCHEN EXHAUST FANS TO PROVIDE MAKE-UP AIR FOR HOODS.

OCCUPIED MODE:

SUPPLY FAN SHALL RUN CONTINUOUSLY AND OUTSIDE AIR DAMPER SHALL OPEN TO MINIMUM POSITION TO DELIVER SCHEDULED QUANTITY OF VENTILATION AIR.

SUPPLY FAN SPEED SHALL VARY AIRFLOW AS A FUNCTION OF LOAD, DURING NON-COOLING, FIRST STAGE COOLING, AND NON-HEATING TIMES, SUPPLY FAN SHALL RUN AT MINIMUM SPEED. DURING SECOND STAGE COOLING AND HEATING TIMES, SUPPLY FAN SHALL RUN AT FULL SPEED. OUTSIDE AIR DAMPER SHALL MODULATE POSITION TO MAINTAIN REQUIRED QUANTITY OF OUTSIDE AIR AS SUPPLY FAN VARIES SPEED.

COOLING:

WHEN SPACE TEMPERATURE RISES ABOVE OCCUPIED COOLING SET POINT, PACKAGED DIRECT EXPANSION COOLING SHALL BE ENERGIZED AND STAGE AS REQUIRED TO MAINTAIN SPACE TEMPERATURE.

ECONOMIZER:

WHEN OUTDOOR AIR TEMPERATURE IS BELOW 65°F (ADJUSTABLE), ECONOMIZER SHALL MODULATE BETWEEN ITS MINIMUM SET POINT AND FULL OPEN TO MAINTAIN SPACE COOLING SET POINT, SUBJECT TO A MIXED AIR TEMPERATURE LOW LIMIT CONTROLLER SET POINT OF 55°F. IF OUTDOOR TEMPERATURE IS ABOVE COMPRESSOR LOCKOUT THERMOSTAT SETTING, MECHANICAL COOLING SHALL BE ENABLED AS SECOND STAGE OF COOLING.

DEHUMIDIFICATION (WHERE APPLICABLE):

WHEN SPACE HUMIDITY READING EXCEEDS 55%RH (ADJUSTABLE), REFRIGERATION SYSTEM SHALL OPERATE AND INITIATE HOT GAS REHEAT AS REQUIRED TO MAINTAIN SPACE HUMIDITY.

HEATING:

WHEN SPACE TEMPERATURE FALLS BELOW OCCUPIED HEATING SET POINT, GAS HEATER SHALL BE ENERGIZED IN STAGES (WHERE APPLICABLE) TO MAINTAIN SPACE TEMPERATURE.

UNOCCUPIED MODE:

COOLING:

UPON SIGNAL FROM THERMOSTAT, SUPPLY FAN SHALL BE DEENERGIZED AND OUTSIDE AIR DAMPER SHALL CLOSE. IF SPACE TEMPERATURE RISES 2 DEGREES OR MORE ABOVE UNOCCUPIED SET POINT, OUTSIDE AIR DAMPER SHALL REMAIN CLOSED, SUPPLY FAN SHALL BE ACTIVATED AND DX COOLING SHALL BE STAGED AS REQUIRED TO MAINTAIN UNOCCUPIED SPACE TEMPERATURE. WHEN TEMPERATURE FALLS 2 DEGREES BELOW SET POINT, COMPRESSOR SHALL BE DE-ENERGIZED AND SUPPLY FAN SHALL SHUT OFF.

HEATING:

UPON A SIGNAL FROM THERMOSTAT, SUPPLY FAN SHALL BE DE-ENERGIZED AND OUTSIDE AIR DAMPER SHALL CLOSE. IF SPACE TEMPERATURE FALLS 2 DEGREES OR MORE BELOW SET POINT, OUTSIDE AIR DAMPER SHALL REMAIN CLOSED, SUPPLY FAN SHALL BE ACTIVATED AND GAS HEAT SHALL BE ENERGIZED UNTIL UNOCCUPIED SPACE TEMPERATURE IS SATISFIED. WHEN TEMPERATURE RISES 2 DEGREES ABOVE SET POINT, GAS HEAT SHALL BE DISABLED AND SUPPLY FAN SHALL BE DE-ENERGIZED.

MORNING WARM-UP/COOL-DOWN:

CONTROLS SHALL BE CAPABLE OF AUTOMATICALLY ADJUSTING DAILY START TIME OF UNIT IN ORDER TO BRING EACH SPACE TO DESIRED OCCUPIED TEMPERATURE IMMEDIATELY PRIOR TO SCHEDULED OCCUPANCY.

OCCUPIED COOLING SET POINT	75 DEGREES
OCCUPIED HEATING SET POINT:	70 DEGREES
UNOCCUPIED COOLING SET POINT:	85 DEGREES
UNOCCUPIED HEATING SET POINT:	55 DEGREES

A SMOKE DETECTOR SHALL DE-ENERGIZE ROOFTOP UNIT SUPPLY FAN AND CLOSE OUTSIDE AIR DAMPER IN BOTH OCCUPIED AND UNOCCUPIED MODES WHENEVER SMOKE IS SENSED BY SMOKE DETECTORS.

MECHANICAL SPECIFICATIONS

PROVIDE EQUIPMENT INDICATED ON DRAWINGS, AND AS REQUIRED FOR A COMPLETE FUNCTIONING SYSTEM.

DEFINITIONS: FURNISH MEANS TO SUPPLY AND DELIVER TO PROJECT SITE, READY FOR INSTALLATION. INSTALL MEANS TO PLACE IN POSITION AND MAKE CONNECTIONS FOR SERVICE OR USE. PROVIDE MEANS TO FURNISH AND INSTALL, COMPLETE AND READY FOR INTENDED USE.

WARRANTY: PROVIDE LABOR AND MATERIALS TO REPAIR OR REPLACE DEFECTIVE PARTS AND MATERIALS AS REQUIRED FOR ONE YEAR AFTER SUBSTANTIAL COMPLETION OR OWNER ACCEPTANCE OF COMPLETED PROJECT. PROVIDE SEPARATE LINE ITEM DEDUCT AMOUNT ON THE PROPOSAL FORM TO DELETE WARRANTY SERVICE, AT OWNER'S OPTION.

COORDINATION: COORDINATE WITH WORK OF OTHER TRADES, EQUIPMENT FURNISHED BY OTHERS, REQUIREMENTS OF OWNER, AND WITH CONSTRAINTS OF EXISTING CONDITIONS OF PROJECT SITE.

DUCT DIMENSIONS: UNLESS OTHERWISE NOTED, DUCT DIMENSIONS ON DRAWINGS ARE INSIDE CLEAR DIMENSIONS.

SHEET METAL DUCTWORK: PROVIDE SHEET METAL DUCTWORK FABRICATED AND INSTALLED IN ACCORDANCE WITH ASHRAE AND SMACNA STANDARDS, FOR 1" W.G. PRESSURE CLASS, SEAL CLASS "A". SHEET METAL SHALL BE GALVANIZED SHEET STEEL OF LOCK FORMING QUALITY, WITH G90 ZINC COATING. SHEET STEEL SHALL COMPLY WITH ASTM A653 STANDARD SPECIFICATION FOR STEEL SHEET METAL, ZINC COATED (GALVANIZED) OR ZINC-IRON ALLOY-COATED (GALVANNEAL) BY HOT DIP PROCESS, AND A924 STANDARD SPECIFICATION FOR GENERAL REQUIREMENTS FOR SHEET, METALLIC-COATED BY HOT DIP PROCESS. ALL ANGLE IRON USED FOR SUPPORT SHALL BE GALVANIZED. CONNECTIONS TO WALLS OR FLOOR SHALL BE AIR TIGHT WITH ANGLE IRON AND CAULKING. SEAL ALL DUCT SEAMS, TRANSVERSE AND LONGITUDINAL, AIR TIGHT. PROVIDE TURNING VANES AT ALL 90° ELBOWS.

REFRIGERANT PIPING: TYPE ACR HARD DRAWN COPPER TUBING MEETING THE REQUIREMENTS OF ASTM B280, WITH WROUGHT COPPER FITTINGS MEETING REQUIREMENTS OF ANSI B16.22, WITH BRAZED JOINTS MEETING REQUIREMENTS OF AWS A 5.8, USING BAG-1 (SILVER) FILLER MATERIAL. INSULATE SUCTION LINE PIPING WITH 1" THICK ARMAFLEX TYPE AP. PAINT INSULATION LOCATED OUTDOORS WITH ARMAFLEX WB FINISH.

ROUND SHEET METAL DUCT: PROVIDE SPIRAL SEAM (ALL SIZES) OR SNAP LOCK (CONCEALED DUCT SIZES UP TO 10") GALVANIZED STEEL COMPLYING WITH SMACNA STANDARDS. SPIRAL SEAM DUCTWORK SHALL HAVE SMACNA SEAM TYPE RL-1.

FLEXIBLE DUCT: PROVIDE FACTORY ASSEMBLED CLASS 1 AIR DUCT (UL 181) WITH 1" THICK 1 PCF FIBERGLASS INSULATION AND REINFORCED OUTER PROTECTIVE COVER/VAPOR BARRIER. FLEXIBLE DUCT SHALL MEET NFPA 90A WITH FLAME SPREAD UNDER 25, SMOKE DEVELOPED UNDER 50, AND SHALL BE RATED FOR MINIMUM 2" W.G. PRESSURE AND 0 TO 250°F TEMPERATURE. PERFORATED METAL ADJUSTABLE CLAMPING DEVICES, USE TWIST-LOCK TAP COLLARS AT CONNECTIONS INTO SHEET METAL DUCTWORK. MAXIMUM EXTENDED LENGTH OF FLEXIBLE DUCT SHALL NOT EXCEED 6 FEET.

DUCT SEALANT: PROVIDE WATER BASED SYNTHETIC LATEX EMULSION PERMANENTLY FLEXIBLE HIGH VELOCITY DUCT SEALANT, DUCTMATE INDUSTRIES INC., PRO SEAL OR EQUAL. SEALANT TO BE LOW VOC LEED COMPLIANT CAPABLE OF 15" W.G., NFPA 90A AND 90B APPROVED, UL 181B-M LISTED AND UL 723 CLASSIFIED. INSTALL PER MANUFACTURER INSTRUCTIONS. SEALANT SHALL BE APPROVED FOR PLENUM INSTALLATIONS AND MEET FLAME SPREAD AND SMOKE DEVELOPED RATINGS FOR PLENUM APPLICATIONS.

DUCT INSULATION (ALL ROUND SUPPLY DUCT AND ROUND RETURN DUCT ABOVE CEILING): PROVIDE MINIMUM 1-1/2" THICK BLANKET TYPE FIBERGLASS INSULATION COMPLYING WITH ASTM C-553, TYPE II, WITH FACTORY APPLIED KRAFT BONDED TO ALUMINUM FOIL, REINFORCED WITH FIBERGLASS VAPOR BARRIER/JACKET. JACKET SHALL CONFORM TO ASTM C-1136, TYPE II, INSTALLED R VALUE SHALL BE 4.2 OR HIGHER WITH 0.75 PCF DENSITY.

DUCT LINER (ALL RECTANGULAR SUPPLY AND RETURN DUCT): PROVIDE MINIMUM 1" THICK, 2 PCF DENSITY, LONG TEXTILE FIBER TYPE DUCT LINER, WITH COATING ON AIR STREAM SIDE CONFORMING TO NFPA 90A. DUCT LINER SHALL BE SECURED TO DUCT WITH BOTH ADHESIVE AND MECHANICAL FASTENERS. ADHESIVE SHALL BE LEED COMPLIANT LOW VOC AS RECOMMENDED BY DUCT LINER MANUFACTURER, AND SHALL COMPLY WITH ASTM C-916. DUCT LINER FASTENERS SHALL COMPLY WITH SMACNA "HVAC DUCT CONSTRUCTION STANDARDS", LATEST EDITION. THERMAL CONDUCTIVITY SHALL BE EQUAL TO OR LESS THAN 0.24 AT 75°F.

ROUND VOLUME DAMPERS: PROVIDE MINIMUM 20 GAUGE GALVANIZED STEEL FRAME AND BLADES, MINIMUM 3/8" SQUARE STEEL AXLE, MOLDED SYNTHETIC BEARINGS, WITH LOCKING POSITION REGULATOR. REGULATOR SHALL BE POSITIONED WITH SHEET METAL BRACKET BEYOND DUCT COVERING, WHERE POSITIONING REGULATOR IS NOT ACCESSIBLE, PROVIDE COUPLING AND EXTENSION ROD WITH REGULATOR FOR CEILING OR WALL INSTALLATION, AS REQUIRED.

RECTANGULAR VOLUME DAMPERS: PROVIDE MINIMUM 16 GAUGE GALVANIZED STEEL CHANNEL FRAME, 16 GAUGE GALVANIZED STEEL BLADES, MINIMUM 1/2" HEXAGONAL AXLE, MOLDED SYNTHETIC BEARINGS, WITH 3/8" SQUARE PLATED STEEL CONTROL SHAFT. LINKAGES SHALL BE CONCEALED IN FRAME. OPERATING SHAFT SHALL EXTEND BEYOND FRAME AND DUCT TO A LOCKING QUADRANT WITH ADJUSTABLE LEVER. MAXIMUM BLADE WIDTH SHALL NOT EXCEED 6".

DUCT TURNING VANES: PROVIDE FABRICATED TURNING VANES AND VANE RUNNERS CONSTRUCTED IN ACCORDANCE WITH SMACNA "HVAC DUCT CONSTRUCTION STANDARDS". PROVIDE TURNING VANES CONSTRUCTED OF CURVED BLADES, SUPPORTED WITH BARS PERPENDICULAR TO BLADES, AND SET INTO SIDE STRIPS SUITABLE FOR MOUNTING IN DUCTWORK. FOLLOW SMACNA GUIDELINES FOR SPACING SUPPORT, AND CONSTRUCTION. ALL BLADES SHALL BE DOUBLE THICKNESS AIRFOIL TYPE.

FLEXIBLE DUCT CONNECTORS: PROVIDE UL LABELED 30 OUNCE NEOPRENE COATED FIBERGLASS FABRIC DUCT CONNECTORS AT DUCT CONNECTIONS TO VIBRATING EQUIPMENT.

DUCT ACCESS DOORS: PROVIDE HINGED ACCESS DOORS IN DUCTWORK WHERE REQUIRED FOR ACCESS TO EQUIPMENT. PROVIDE INSULATED ACCESS DOORS FOR INSULATED DUCTWORK. CONSTRUCT OF SAME OR THICKER GAUGE SHEET METAL AS DUCT IN WHICH IT IS INSTALLED. PROVIDE FLUSH FRAMES FOR UNINSULATED DUCTS, AND EXTENDED FRAMES FOR EXTERNALLY INSULATED DUCTS. PROVIDE CONTINUOUS HINGE ON ONE SIDE, WITH ONE HANDLE-TYPE LATCH FOR ACCESS DOORS 12" HIGH AND SMALLER, AND TWO HANDLE-TYPE LATCHES FOR LARGER ACCESS DOORS.

DUCT ACCESS DOORS: PROVIDE HINGED ACCESS DOORS IN DUCTWORK WHERE REQUIRED FOR ACCESS TO EQUIPMENT. PROVIDE INSULATED ACCESS DOORS FOR INSULATED DUCTWORK. CONSTRUCT OF SAME OR THICKER GAUGE SHEET METAL AS DUCT IN WHICH IT IS INSTALLED. PROVIDE FLUSH FRAMES FOR UNINSULATED DUCTS, AND EXTENDED FRAMES FOR EXTERNALLY INSULATED DUCTS. PROVIDE CONTINUOUS HINGE ON ONE SIDE, WITH ONE HANDLE-TYPE LATCH FOR ACCESS DOORS 12" HIGH AND SMALLER, AND TWO HANDLE-TYPE LATCHES FOR LARGER ACCESS DOORS.

MECHANICAL PIPING IDENTIFICATION: PROVIDE PIPE MARKERS, FLOW ARROWS AND ENGRAVED PLASTIC-LAMINATE SIGNS FOR MECHANICAL PIPING AND VALVES TO COMPLY WITH ANSI A13.1. PROVIDE ONLY ONE TYPE OF PIPE MARKERS AND FLOW ARROWS FOR ALL SYSTEMS.

GREASE EXHAUST DUCTWORK: FACTORY FABRICATED DOUBLE WALL DUCTWORK COMPLIANT WITH UL 2221 AND UL 1978. SEE HOOD SYSTEM DRAWINGS FOR MORE INFORMATION.

COMPOSITE GREASE DUCT FIRE PROTECTION INSULATION ASSEMBLY: PROVIDE FLEXIBLE BLANKET-TYPE INSULATION COMPOSED OF FIBER BLANKET ENCAPSULATED IN AN ALUMINUM FOIL SCRM, PROVIDING A NONCOMBUSTIBLE WRAP TO PROVIDE A VAPOR AND DUST BARRIER. DUCT WRAP SYSTEM SHALL HAVE FLAME SPREAD INDEX OF NOT MORE THAN 5 AND SMOKE DEVELOPED INDEX NOT EXCEEDING 5, WHEN TESTED PER ASTM E-84 METHOD. INSULATION AND JACKET SHALL BE RATED FOR OPERATING TEMPERATURES UP TO 2000°F. DUCT WRAP SYSTEM MUST COMPLY WITH ALL FIVE FIRE TESTS OF STANDARD ASTM E2336. GREASE DUCT ENCLOSURE SYSTEM, AND THE DUCT FIRESTOP SYSTEM SHALL BE ASTM E 814 CLASSIFIED. PROVIDE COMPOSITE GREASE DUCT FIRE PROTECTION INSULATION FROM ONE OF THE FOLLOWING: THERMAL CERAMICS FIREMASTER FASTWRAP XL, UNIFRAX FYREWAP 2.0 MAX.

MECHANICAL EQUIPMENT IDENTIFICATION: PROVIDE ENGRAVED PLASTIC LAMINATE LABEL FOR EACH MAJOR ITEM OF MECHANICAL EQUIPMENT AND EACH OPERATIONAL DEVICE. LETTERS SHALL BE MINIMUM OF 1/2" HIGH. PROVIDE SIGNS TO INFORM OPERATOR OF OPERATIONAL REQUIREMENTS, TO INDICATE SAFETY AND EMERGENCY PRECAUTIONS, AND TO WARN OF HAZARDS AND IMPROPER OPERATION.

TESTING AND BALANCING: TEST AND ADJUST ALL MECHANICAL SYSTEMS AND EQUIPMENT TO ASSURE PROPER BALANCE AND OPERATION. PERFORM TESTS IN ACCORDANCE WITH THE MOST CURRENT NEBB OR AABC, AND ASHRAE STANDARDS. ELIMINATE OBJECTIONABLE NOISE AND VIBRATION, AND ASSURE PROPER FUNCTION OF CONTROLS. BALANCING CONTRACTOR SHALL BE AN INDEPENDENT CERTIFIED TEST AND BALANCE CONTRACTOR, WITH NEBB OR AABC CERTIFICATION. SUBMIT COMPLETED AND CERTIFIED TEST AND BALANCE REPORT TO OWNER'S REPRESENTATIVE. BALANCE ALL SYSTEMS TO WITHIN 5% OF AIR FLOWS INDICATED ON THE DRAWINGS, AND REPORT DISCREPANCIES TO HVAC INSTALLER FOR CORRECTION. MARK FINAL BALANCE POSITIONS ON DAMPERS WITH PERMANENT MARKER.

OPERATIONS AND MAINTENANCE MANUALS (O&M): AT COMPLETION OF PROJECT PROVIDE A MINIMUM OF TWO O&M MANUALS IN THREE RING BINDERS TO OWNER/TENANT. MANUALS SHALL HAVE TABS LABELED WITH ALL SECTIONS SEPARATED WITH A CLEAR INDEX AT FRONT. PROVIDE WARRANTY LETTER AT FRONT OF MANUAL STATING DATES OF WARRANTY (START DATE AND END DATE) AND CONTACTS WITH PHONE NUMBERS FOR WARRANTY WORK. PROVIDE NARRATIVE OF HOW EACH SYSTEM IS INTENDED TO OPERATE INCLUDING RECOMMENDED SETPOINTS. MANUALS SHALL INCLUDE SUBMITTALS OF ALL EQUIPMENT, SIZE AND OPTIONS SELECTED. PROVIDE ALL BALANCING REPORTS. PROVIDE MANUFACTURER LITERATURE FOR OPERATIONS AND MAINTENANCE FOR ALL EQUIPMENT ON PROJECT. ALL PERIODIC AND ROUTINE MAINTENANCE SHALL BE CLEARLY IDENTIFIED. PROVIDE CONTROLS SECTION LISTING SYSTEM OPERATING AND CONTROL INSTRUCTIONS, MAINTENANCE, CALIBRATION, WIRING DIAGRAMS, SCHEMATICS AND CONTROL SEQUENCE DESCRIPTIONS.

SHOP DRAWINGS/SUBMITTALS: SUBMIT ELECTRONIC SUBMITTALS AND SHOP DRAWINGS VIA EMAIL AS PDF ELECTRONIC FILES. PROVIDE SEPARATE PDF SUBMITTALS ON ALL MECHANICAL EQUIPMENT (INCLUDING CONTROLS PACKAGES), AIR DISTRIBUTION DEVICES, DUCTWORK, DAMPERS, AND INSULATION. SUBMITTALS AND SHOP DRAWINGS SHALL INCLUDE THE FOLLOWING INFORMATION:

- PROJECT NAME
- DATE
- NAME AND ADDRESS OF ARCHITECT AND MEP ENGINEER
- NAME OF CONSTRUCTION MANAGER
- NAME OF BALANCING CONTRACTOR
- NAME OF FIRM OR ENTITY THAT PREPARED SUBMITTAL
- NAMES OF SUBCONTRACTOR, MANUFACTURER, AND SUPPLIER.
- CATEGORY AND TYPE OF SUBMITTAL
- SUBMITTAL PURPOSE AND DESCRIPTION
- MANUFACTURER NAME
- PRODUCT NAME
- DRAWING NUMBER AND DETAIL REFERENCES, AS APPROPRIATE
- INDICATION OF FULL OR PARTIAL SUBMITTAL
- TRANSMITTAL NUMBER
- REMARKS

IDENTIFY DEVIATIONS FROM THE CONTRACT DOCUMENTS ON SHOP DRAWINGS AND SUBMITTALS. FURNISH COPIES OF FINAL SUBMITTALS TO MANUFACTURERS, SUBCONTRACTORS, SUPPLIERS, FABRICATORS, INSTALLERS, AUTHORITIES HAVING JURISDICTION, AND OTHERS AS NECESSARY FOR PERFORMANCE OF CONSTRUCTION ACTIVITIES. SHOW DISTRIBUTION ON TRANSMITTAL FORMS.

SUBMITTALS SHALL INCLUDE (AS APPLICABLE):

- MANUFACTURER'S CATALOG CUTS
- MANUFACTURER'S PRODUCT SPECIFICATIONS
- STATEMENT OF COMPLIANCE WITH SPECIFIED REFERENCED STANDARDS
- TESTING BY RECOGNIZED TESTING AGENCY
- APPLICATION OF TESTING AGENCY LABELS AND SEALS
- WIRING DIAGRAMS SHOWING FACTORY-INSTALLED WIRING
- PERFORMANCE CURVES
- OPERATIONAL RANGE DIAGRAMS
- CLEARANCES REQUIRED TO OTHER CONSTRUCTION, IF NOT INDICATED ON SHOP DRAWINGS.

FULL SIZE SHOP DRAWINGS SHALL INCLUDE (AS APPLICABLE):

- IDENTIFICATION OF PRODUCTS
- SCHEDULES
- COMPLIANCE WITH SPECIFIED STANDARDS
- NOTATION OF COORDINATION REQUIREMENTS
- NOTATION OF DIMENSIONS ESTABLISHED BY FIELD MEASUREMENT
- RELATIONSHIP AND ATTACHMENT TO ADJOINING CONSTRUCTION CLEARLY INDICATED.

MECHANICAL CONTRACTOR IS RESPONSIBLE FOR PROVIDING DUCT SHOP DRAWINGS TO THE ENGINEER FOR REVIEW PRIOR TO FABRICATION AND INSTALLATION.

MECHANICAL SYMBOLS LEGEND

ABBREVIATIONS:

AHJ	AUTHORITY HAVING JURISDICTION
BTU	BRITISH THERMAL UNIT
CFM	CUBIC FEET PER MINUTE
DB	DRY BULB
EA	EXHAUST AIR
EAT	ENTERING AIR TEMPERATURE
ESP	EXTERNAL STATIC PRESSURE
GC	GENERAL CONTRACTOR
HZ	FREQUENCY
LA	LEAVING AIR TEMPERATURE
MC	MECHANICAL CONTRACTOR
NC	NOISE CRITERIA
RTU	ROOFTOP UNIT
WB	WET BULB

GRILLES/DIFFUSERS:

	SUPPLY DIFFUSER
	RETURN GRILLE
	EXHAUST GRILLE

DOUBLE LINE DUCT SYMBOLS:

	NEW SHEET METAL DUCTWORK & SIZE
	SUPPLY OR OUTSIDE AIR DUCT
	RETURN AIR DUCT
	EXHAUST AIR DUCT
	DUCTWORK TRANSITION
	DUCTWORK TRANSITION - RECTANGULAR TO ROUND
	SUPPLY DUCT ELBOW UP OR DOWN
	RETURN DUCT ELBOW UP OR DOWN
	EXHAUST DUCT ELBOW UP OR DOWN
	DUCT ELBOW WITH FIXED TURNING VANES
	DUCT BRANCH TAKE-OFF
	ROUND SPIN-IN WITH DAMPER
	VOLUME DAMPER
	FLEXIBLE DUCTWORK

GENERAL REFERENCES/NOTATIONS:

	SQUARE NOTE DESIGNATION
	REVISION DESIGNATION
	MECHANICAL EQUIPMENT DESIGNATION
	DIFFUSER DESIGNATION AND CFM

EQUIPMENT:

	ROOF MOUNTED EXHAUST FAN
	ROOFTOP UNIT
	THERMOSTAT - ELECTRIC
	TEMPERATURE SENSOR
	TEMPERATURE/HUMIDITY SENSOR
	DUCT SMOKE DETECTOR

SYMBOLS LEGEND NOTES:
1. REFER TO SPECIFICATIONS AND PLAN NOTES FOR DETAILED DESCRIPTION OF ALL DEVICES SHOWN IN THIS SCHEDULE, PROVIDED BY THIS CONTRACTOR.

ISSUE TABLE		
No.	Date (mm/dd/yy)	Description
REVISIONS		
No.	Date	Description
DRAWINGS REVISED AS PER DESIGN BULLETIN		
No.	Date	Description

PROJECT NORTH

rchitrave GROUP P.C.

157 Broad Street • Suite 107
Red Bank, New Jersey 07701
Phone (732) 212-0007 Fax (732) 212-0059
JOSE C. SANTOS, P.E. - NJ A18745
NY 03506 DE 55-0007774
VA 015922 NC 122606F 59665

SHULTZ ENGINEERING GROUP

212 N. McDowell St, Suite 204
Charlotte, NC 28204
(P) 704.334.7363 (F) 704.347.0093
www.shultzeng.com | SEG - 23-436
NC FIRM LICENSE NUMBER: C-0898
P: GR

LOUISIANA KITCHEN

10 72

POPEYES

Store Type: US 2112 PROTOTYPE 2112-21

Location: 503 W. 3RD STREET PEMBROKE, NORTH CAROLINA

Drawing Title: MECHANICAL SPECIFICATIONS

Drawn: JTM Checked: JS

Scale: Date: 8/11/23

Project No.: G23-29 Drawing No.: MS1.1

8-11-23

8-11-23