

# hell und dunkel für orgel

Allegro

sofia gubaidulina

Manual

*mp*

8<sup>1</sup>; 4<sup>1</sup>; 2<sup>1</sup>.

*pp*

Pedal

\*) Cluster    \*\*) Gehaltene Töne

Handwritten musical score for piano, consisting of five systems of staves. The notation includes various musical symbols such as notes, rests, and fingerings.

The first system shows a treble and bass staff with a descending melodic line in the treble and a sustained bass line. The second system features a treble staff with a descending line and a bass staff with a sustained line. The third system shows a treble staff with a descending line and a bass staff with a sustained line. The fourth system shows a treble staff with a descending line and a bass staff with a sustained line. The fifth system shows a treble staff with a descending line and a bass staff with a sustained line.

Key features of the notation include:

- Handwritten notes and rests.
- Fingerings indicated by numbers 1, 2, 3, 4.
- Accents marked with a triangle symbol ( $\Delta$ ).
- Dynamic markings such as  $p$  (piano).
- Slurs and ties connecting notes.

Handwritten musical score for piano, consisting of six systems of staves. The music is in G major and 4/4 time. It features various melodic lines, chords, and dynamic markings such as *mf* and *f*. There are also handwritten annotations like *mf*, *f*, and *mf* in different parts of the score.

Handwritten musical score for piano, consisting of six systems of staves. The score includes various musical notations such as notes, rests, and dynamic markings like "Tutti" and "ff". There are also handwritten annotations and corrections throughout the piece.

System 1: Treble and bass staves. Treble staff has a key signature change to two flats (B-flat, E-flat) and a common time signature. Bass staff has a key signature change to one flat (B-flat) and a common time signature. The word "Tutti" is written above the bass staff.

System 2: Treble and bass staves. Treble staff has a key signature change to one flat (B-flat) and a common time signature. Bass staff has a key signature change to one flat (B-flat) and a common time signature.

System 3: Treble and bass staves. Treble staff has a key signature change to one flat (B-flat) and a common time signature. Bass staff has a key signature change to one flat (B-flat) and a common time signature. The word "ff" is written above the bass staff.

System 4: Treble and bass staves. Treble staff has a key signature change to one flat (B-flat) and a common time signature. Bass staff has a key signature change to one flat (B-flat) and a common time signature.

System 5: Treble and bass staves. Treble staff has a key signature change to one flat (B-flat) and a common time signature. Bass staff has a key signature change to one flat (B-flat) and a common time signature.

System 6: Treble and bass staves. Treble staff has a key signature change to one flat (B-flat) and a common time signature. Bass staff has a key signature change to one flat (B-flat) and a common time signature.

Handwritten musical score system 1. It features a grand staff with treble and bass clefs. The right hand plays a series of descending eighth notes, while the left hand plays a series of ascending eighth notes. A dynamic marking *ff* is present below the staff.

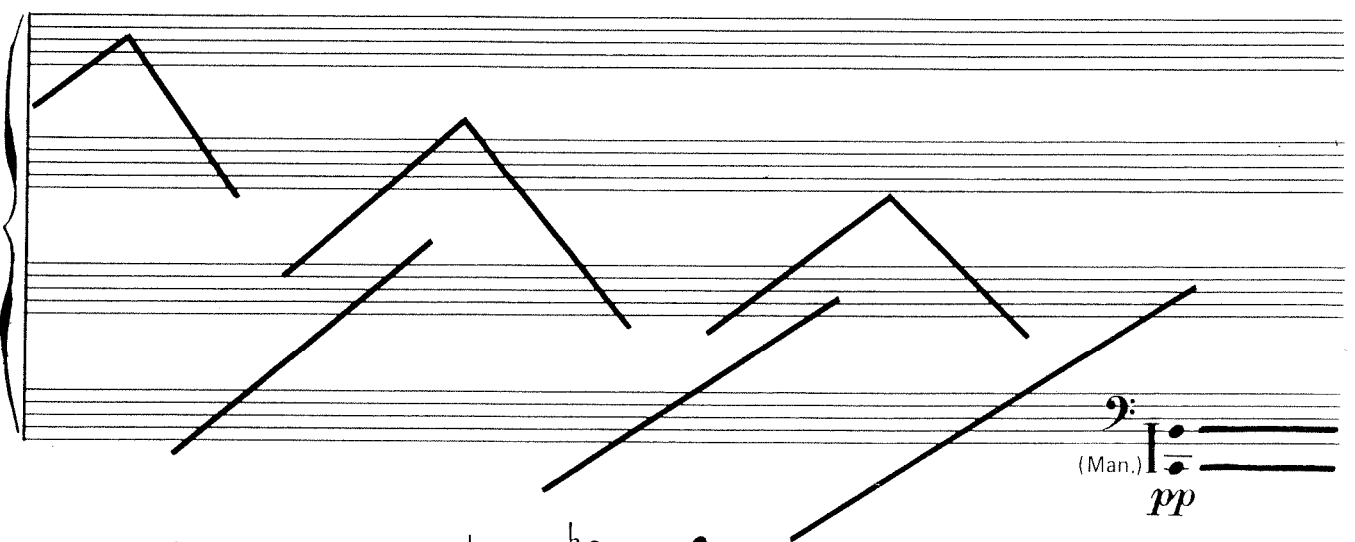
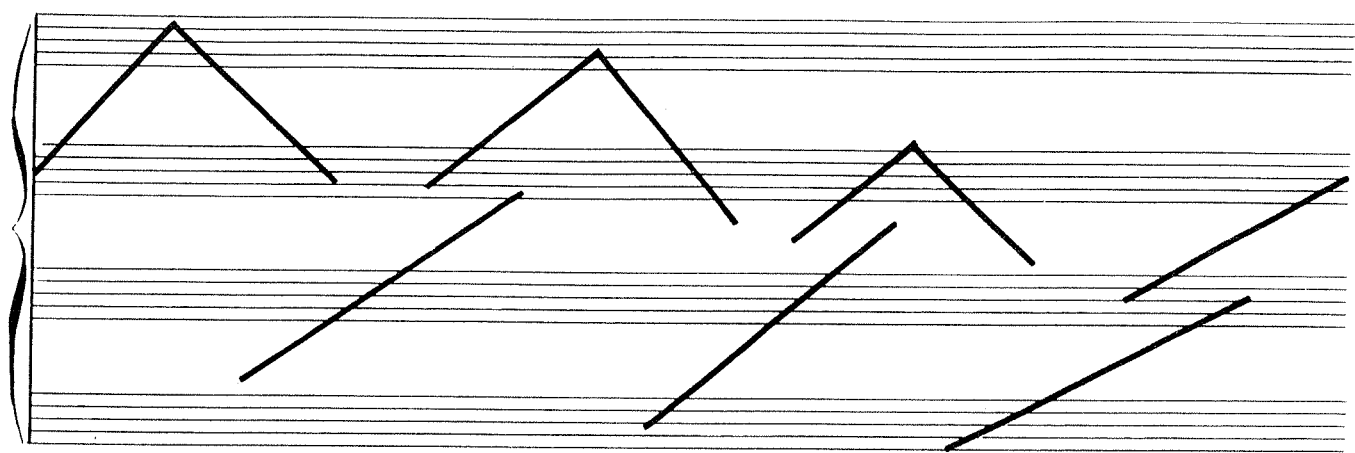
Handwritten musical score system 2. It continues the melodic lines from the first system. The right hand has a series of descending notes, and the left hand has a series of ascending notes. A circled note is visible in the bass clef of the right hand.

Handwritten musical score system 3. It continues the melodic lines. The right hand has a series of descending notes, and the left hand has a series of ascending notes. A circled note is visible in the bass clef of the right hand.

Handwritten musical score system 4. It continues the melodic lines. The right hand has a series of descending notes, and the left hand has a series of ascending notes. A circled note is visible in the bass clef of the right hand.

Handwritten musical score system 5. It features a grand staff with treble and bass clefs. The right hand plays a series of descending eighth notes, while the left hand plays a series of ascending eighth notes. A dynamic marking *ff* is present below the staff.

\*) Cluster-Glissandi; relative Höhe



mf 3 5

mf 8'

ppp p

(ohne Kopfhörer)

\*) Übergang von einem Ton zum Cluster

Handwritten: *11.54*

**ff** (Ped.)

This system shows a piano introduction with a treble clef staff and two bass clef staves. The right hand has a whole rest. The left hand plays a series of chords with a crescendo hairpin. A handwritten note "11.54" is above the first chord. A pedal point is indicated by a line with a downward arrow and the marking "ff (Ped.)".

**Tutti**

This system continues the piano introduction. The right hand enters with a chord marked with an accent (^). The left hand continues with chords and a crescendo. The word "Tutti" is written above the left hand's entry. The system ends with a double bar line.

This system continues the piano introduction. The right hand has a whole rest. The left hand plays a series of chords with a crescendo hairpin. The system ends with a double bar line.

**Lento**

**ff**

**pp**

**8' 4' 2' Allegro**

This system marks the beginning of a new section. The right hand has a whole rest. The left hand plays a series of chords with a crescendo hairpin, marked with an accent (^) and "ff". A piano dynamic marking "pp" is below the first chord. A handwritten "16" is next to the first chord. The system ends with a double bar line. To the right, a new section begins with a treble clef staff and a bass clef staff. The right hand plays a melody marked with an accent (^) and "8' 4' 2' Allegro". The left hand plays a series of chords with a crescendo hairpin.



Handwritten musical score for piano, consisting of five systems of staves with treble and bass clefs. The score includes various musical notations such as notes, rests, and fingerings, along with tempo markings "Lento" and "Allegro".

**System 1:** Treble clef staff contains a series of notes with handwritten fingerings (3, 3, 2, 3, 1, 1, 2, 3, 1, 5, 1). The bass clef staff is empty.

**System 2:** Treble clef staff contains a series of notes. The bass clef staff contains a series of notes. The tempo marking "Lento" is written above the staff.

**System 3:** Treble clef staff contains a series of notes. The bass clef staff contains a series of notes. The tempo marking "Allegro" is written above the staff.

**System 4:** Treble clef staff contains a series of notes. The bass clef staff contains a series of notes.

**System 5:** Treble clef staff contains a series of notes. The bass clef staff contains a series of notes. The tempo marking "Lento" is written above the staff.

Allegro

Lento

16' ab.

Allegro

Lento

Allegro

Lento

Handwritten musical score for piano, featuring multiple systems of staves with treble and bass clefs. The score includes tempo markings: "Allegro" and "Lento". It also contains performance instructions such as "16' ab." and "d: d:". The music is written in a key with one flat (B-flat) and includes various musical notations like notes, rests, and accidentals. There are also some handwritten annotations above the staves, including "3 2 1" and "3 2 1 3 2 1 3".

Allegro

Handwritten numbers 2 3 1 are written below the first measure of the bass staff.

This system shows the first staff of a musical score. The bass staff contains a melodic line starting with a half note, followed by eighth notes, and ending with a quarter note. The treble staff contains a whole note chord in the first measure, followed by a whole rest.

Lento

Handwritten numbers 1 2 3 4 are written above the first measure of the bass staff.

This system shows the second staff. The bass staff contains a melodic line starting with a half note, followed by eighth notes, and ending with a quarter note. The treble staff contains a whole note chord in the first measure, followed by a whole rest.

Allegro

Lento

This system shows the third staff. The bass staff contains a melodic line starting with a half note, followed by eighth notes, and ending with a quarter note. The treble staff contains a whole note chord in the first measure, followed by a whole rest.

Allegro

*8<sup>a</sup> p*

This system shows the fourth staff. The bass staff contains a melodic line starting with a half note, followed by eighth notes, and ending with a quarter note. The treble staff contains a whole note chord in the first measure, followed by a whole rest.

This system shows the fifth staff. The bass staff contains a melodic line starting with a half note, followed by eighth notes, and ending with a quarter note. The treble staff contains a whole note chord in the first measure, followed by a whole rest.

16'

*pp*

### Zeichenerklärung

- ‘ - Kurze Pause
- Λ - Etwas längere Pause
- ⊙ - Lange Pause (oder Fermate)
- ⊠ - Sehr lange Pause (oder Fermate)