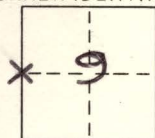


CORNER RECORD

COUNTY OF MONO T. 1 N R. 26 E MD B MERIDIAN CALIFORNIA
CORNER TYPE: GOV'T. CORNER ☐ MEANDER ☐ RANCHO ☐ CONTROL ☐ OTHER ☒
CORNER IDENTIFICATION - DATE OF VISIT 25 OCTOBER 1984



W 1/4 Sec 9

CORNER - LEFT AS FOUND ☒ FOUND AND TAGGED ☐ REESTABLISHED OBLITERATED CORNER ☐ REBUILT ☐

PHYSICAL DESCRIPTION OF CORNER FOUND: EVIDENCE AND METHOD USED TO IDENTIFY OR REESTABLISH FND IN
GOOD CONDITION 1 1/4" O.D. I.P. W/ CENTER HOLE CAP, 0.25' ± ABOVE
GROUND, 450' ± W. OF HWY 395, 175' ± S. OF P.M. 51.73. POINT IS
WITHIN 1.5' ± OF LINE FORMED BY DOUBLE DOORS LEE VINING HIGH
SCHOOL, FLAG POLE (HIGH SCHOOL) AND LIGHT POLE W.O.P LVHS.

PHYSICAL DESCRIPTION OF MONUMENTS REBUILT OR PERPETUATED

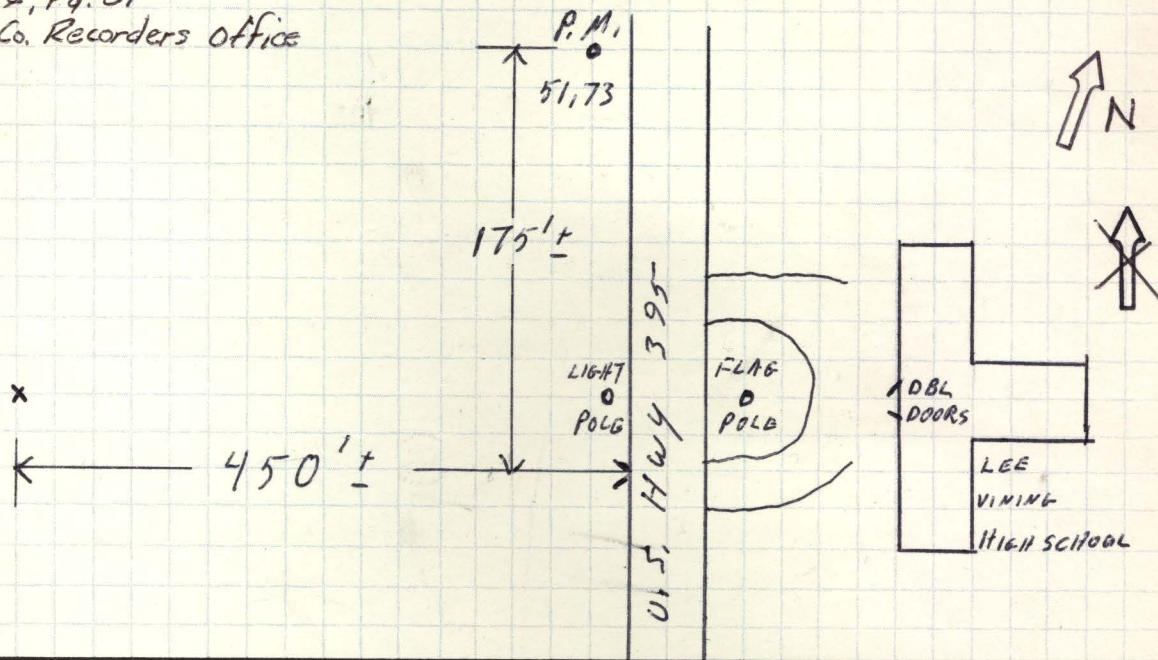
PHOTOS TAKEN: ROLL 2 4) CLOSE UP FACING NORTH
5) VIEW EAST INCLUDING LVHS
6) VIEW SOUTH TOWARD TRAILER PARK

JOB - 09400 203702

CALIFORNIA COORDINATE SYSTEM ORDER: FIRST ☐ SECOND ☐ THIRD ☒
STATIONS USED: NGS (USC & GS) ☒ STATE ☐ COUNTY ☐ OTHER ☐ STATION LEE VINING STATION AD. MK.
ZONE 3 ELEVATION 6770 ± NORTHINGS (Y) 534,605.2 ± EASTINGS (X) 2,397,096.5 ±

SKETCH: (Include reference tie or witness points, remarks and topo of area)

Ref: MBL, Pg. 51
= Mono Co. Records Office



SURVEYOR'S CERTIFICATE

THIS CORNER RECORD WAS PREPARED BY ME OR UNDER MY
DIRECTION IN CONFORMANCE WITH THE LAND SURVEYORS ACT
ON 25 Oct 19 84

SIGNED: MW Altstead

L.S. or R.C.E. No.: CALTRANS P.C.

SEAL

COUNTY SURVEYOR'S CERTIFICATE

THIS CORNER RECORD WAS RECEIVED 1-11 19 85
AND EXAMINED AND FILED 1-17 19 85

BY: Edward Bond

TITLE: Deputy County Surveyor

DOCUMENT No. 1N 26-9-2

STATEMENT ON BACK OF SHEET

YES ☐ NO ☒