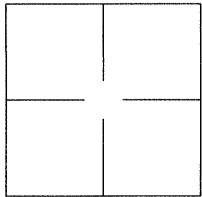


CORNER RECORD

Agency Index BK 125 pg 37Document Number CR 13544City of OAKLANDCounty of ALAMEDA, CaliforniaBrief Legal Description MONUMENT FOUND AT THE INTERSECTION OF TOMPKINS AVENUE & HUNTINGTON STREET

CORNER TYPE

Government Corner ☐ Control ☒
Meander ☐ Property ☐
Rancho ☐ Other ☐

Date of Survey 2019-08-09

COORDINATES (Optional)

N. _____ E. _____

Elevation _____

Units Metric ☐ U.S. Survey Foot ☐

Horizontal Datum _____

Zone _____ Epoch Date _____

Vertical Datum: _____

☐ Complies with Public Resources Code §§8801-8819☐ Complies with Public Resources Code §§8890-8902PLS Act Ref.: ☐ 8765(d) ☒ 8771 ☐ 8773

Other: _____

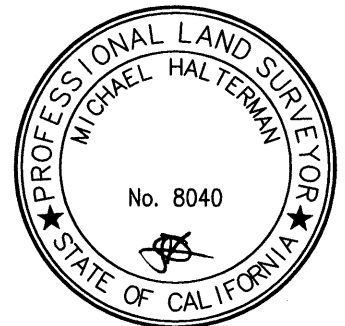
Corner/
Monument: ☐ Left as found ☐ Established ☐ Rebuilt ☒ Pre-Construction
☐ Found and tagged ☐ Reestablished ☒ Referenced ☐ Post-Construction

Narrative of corner identified and monument as found and set or reset:

☒ See sheet #2 for description(s):

SURVEYOR'S STATEMENT

This Corner Record was prepared by me or under my direction in conformance with

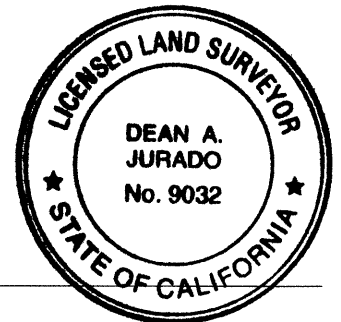
the Land Surveyor's Act on 29 SEPTEMBER, 2019.Signed [Signature] P.L.S. or R.C.E. No.: 8040

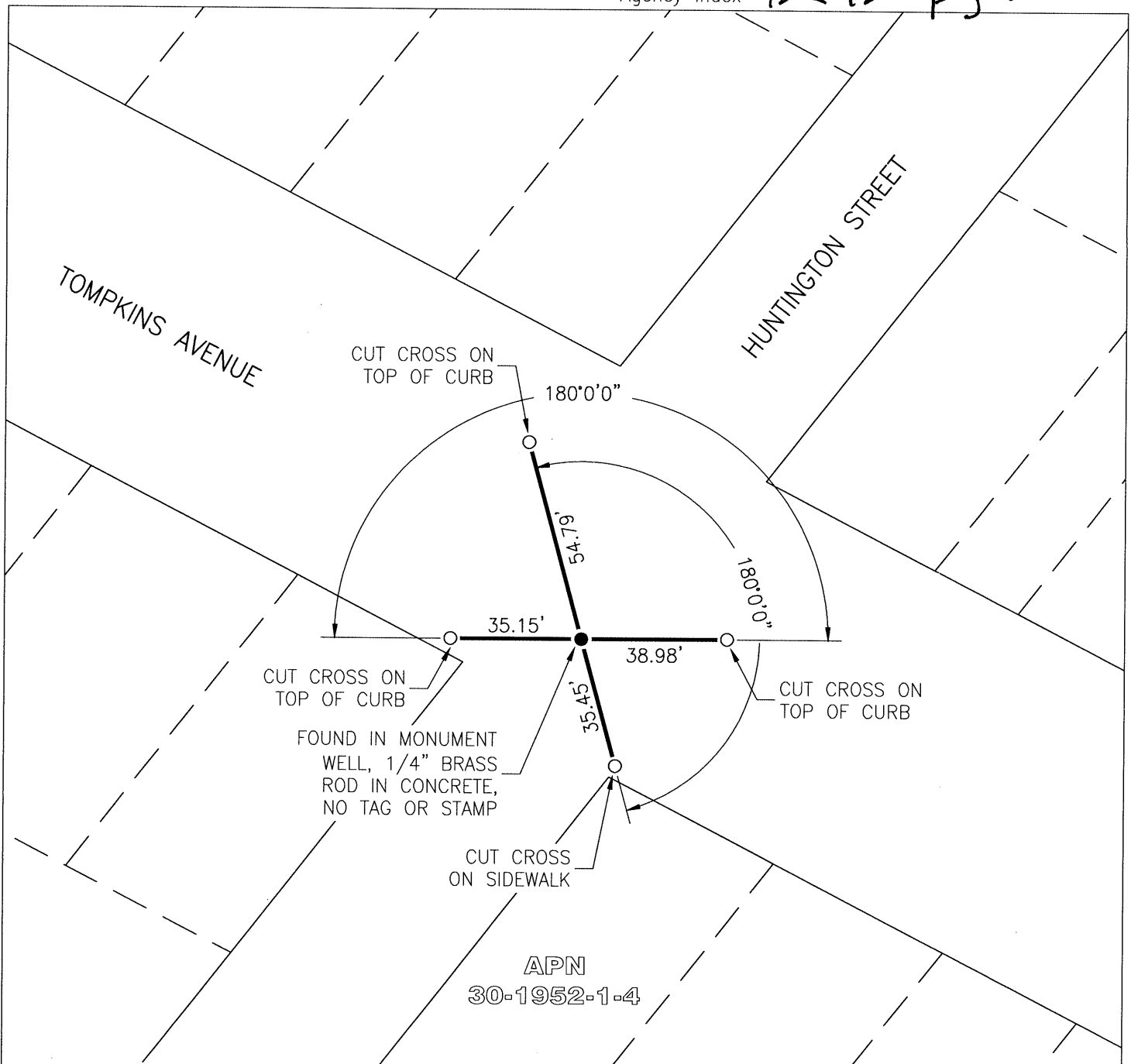
COUNTY SURVEYOR'S STATEMENT

This Corner Record was received October 1, 2019 and examined
and filed October 4, 2019.

Signed [Signature] P.L.S. or R.C.E. No.: 9032Title Interim County Surveyor

County Surveyor's Comment _____





LEGEND

NOTE: ALL PIPE SIZES ARE INSIDE DIAMETER

- FOUND MONUMENT AS NOTED
- SET REFERENCE POINT AS NOTED TAGGED LS 8040

NOTES

1. NO CLAIM IS MADE AS TO THE RELATIONSHIP OF THE MONUMENTS FOUND AND SHOWN HEREON TO THE TRUE BOUNDARY LOCATIONS.

SCALE

1" = 40'