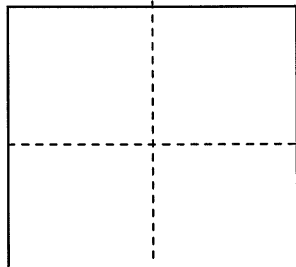


# CORNER RECORD

BK 31  
7976  
Document Number **CR 3548**City of BerkeleyCounty of Alameda, CaliforniaBrief Legal Description Monument B0442**CORNER TYPE**Government Corner ☐ Control ☐Meander ☐ Property ☐Rancho ☐ Other ☒Date of Survey 08/07/08**COORDINATES (Optional)**

N. \_\_\_\_\_

E. \_\_\_\_\_

Zone \_\_\_\_\_ NAD27 ☐ NAD83 ☐

NAD83 Epoch \_\_\_\_\_

Elev. \_\_\_\_\_

Vert. Datum: NGVD29 ☐ NAVD88 ☐Meas. Units: Metric ☐ Imperial ☐**Corner -** Left as found ☒ Found and tagged ☐ Established ☐ Reestablished ☐ Rebuilt ☐

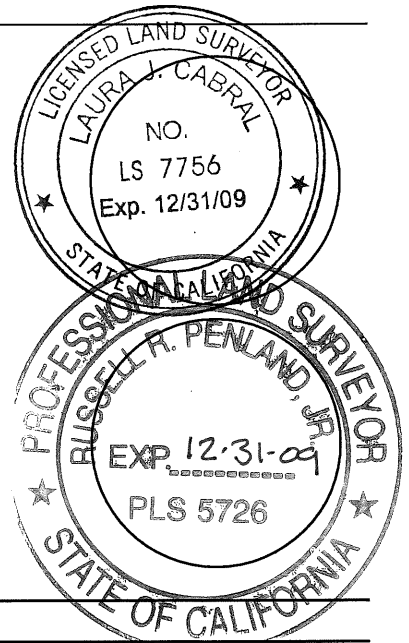
Identification and type of corner found: Evidence used to identify or procedure used to establish or reestablish the corner:

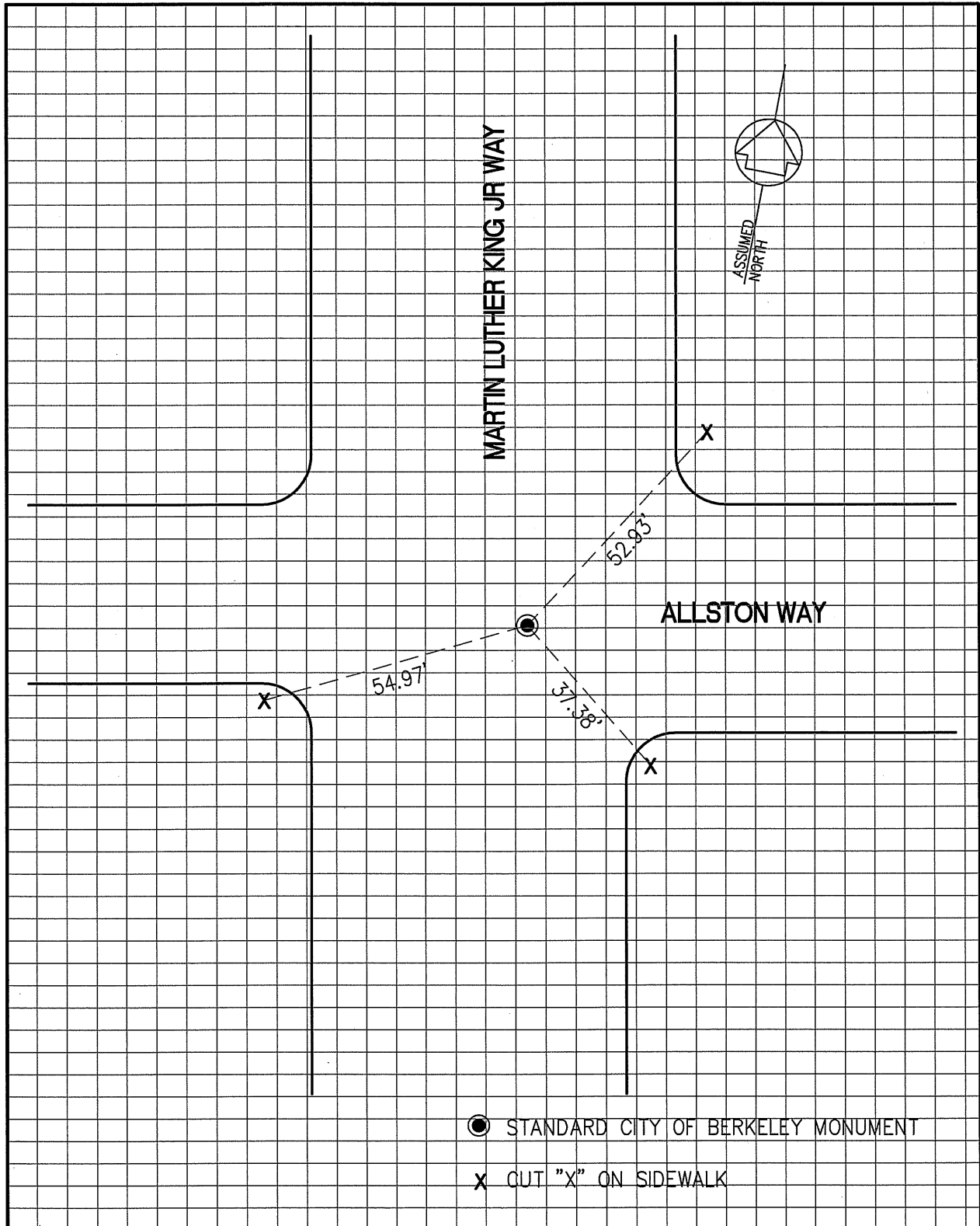
Found standard City of Berkeley Street Monument at the intersectionof Allston Way and Martin Luther King Jr. Way. Monument was referenced usinglocal ties. See sketch on Page 2.A description of the physical condition of the monument as found and as set or reset: Standard City of BerkeleyMonument left as found.**SURVEYOR'S STATEMENT**

This Corner Record was prepared by me or under my direction in conformance with

The Land Surveyor's Act on DEC 29, 2008Signed Laura J. Cabral P.L.S. or R.C.E. No. 7756**COUNTY SURVEYOR'S STATEMENT**This Corner Record was received 12-17-08And examined and filed 1-26-09Signed Russell R. Penland, Jr. P.L.S. or R.C.E. No. 5726Title COUNTY SURVEYOR

County Surveyor's Comment \_\_\_\_\_





**SANDIS**

CIVIL ENGINEERS  
SURVEYORS  
PLANNERS

605 Castro Street | Mountain View, CA 94041 | P. 650.969.6900 | F. 650.969.6472 | [www.sandis.net](http://www.sandis.net)

MOUNTAIN VIEW

ROSEVILLE

OAKLAND

DATE: 08/07/08

SCALE: 1"=30'

DRAWN BY: SLK

APPROVED BY: LJC

DRAWING NO:

207259

**CORNER RECORD  
MONUMENT B0442  
ALLSTON WAY AND  
MLK JR WAY**