

COUNTY OF MENDOCINO  
TOWNSHIP 24 N., RANGE 17 W., MDM  
SECTION 17



BEARINGS, DISTANCES AND COORDINATES  
ARE ON CCS 1983(1991.35) ZONE 2.  
DIVIDE BY 0.9999846 TO OBTAIN  
GROUND DISTANCES.

DISTANCES AND COORDINATES ARE  
IN METERS. TO CONVERT METERS  
TO U.S. SURVEY FEET, MULTIPLY  
DISTANCE BY 3937/1200.

LEGEND

SEE SHEET 5

CENTERLINE STATIONING NOTE

ONLY ORIGINAL GROUND STATIONING IN FEET IS  
SHOWN FOR THE HISTORIC CENTERLINES "K" AND  
"K1". THE STATIONING FOR THE REALIGNMENT  
IS METRIC AND MATCHES THE AS-BUILTS.

DEED REFERENCES

(SYMBOL IS LARGER IN PLAN VIEW)

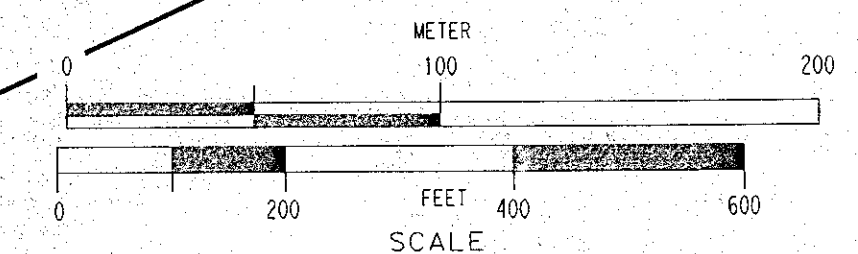
- ① INSTRUMENT #2006-19836 MCR
- ② INSTRUMENT #2006-19015 MCR
- ③ INSTRUMENT #2006-12117 MCR
- ④ INSTRUMENT #2004-04549 MCR

STATE OF CALIFORNIA  
APN 053-250-06  
Inst. No. 2004-04549  
FEE

FOUND A 0.1' ROUGH HEWN REDWOOD STAKE  
AS SHOWN ON THE MAP RECORDED IN CASE 1,  
DRAWER 9, PAGE 86. SAID REDWOOD STAKE WAS  
REPLACED BY A 1" GIP WITH A PROPERLY MARKED  
2 1/4" DIAMETER BRASS DISK BY L55713 AND  
SHOWN ON CORNER RECORD #2-02 IN THE  
MENDOCINO COUNTY SURVEYORS OFFICE.

S89°53'02"E 778.780  
FROM 1/4 TO SECTION CORNER

STATE OF CALIFORNIA  
APN 053-270-17



STATE OF CALIFORNIA  
BUSINESS, TRANSPORTATION AND HOUSING AGENCY  
NORTH REGION  
OFFICE OF SURVEYORS

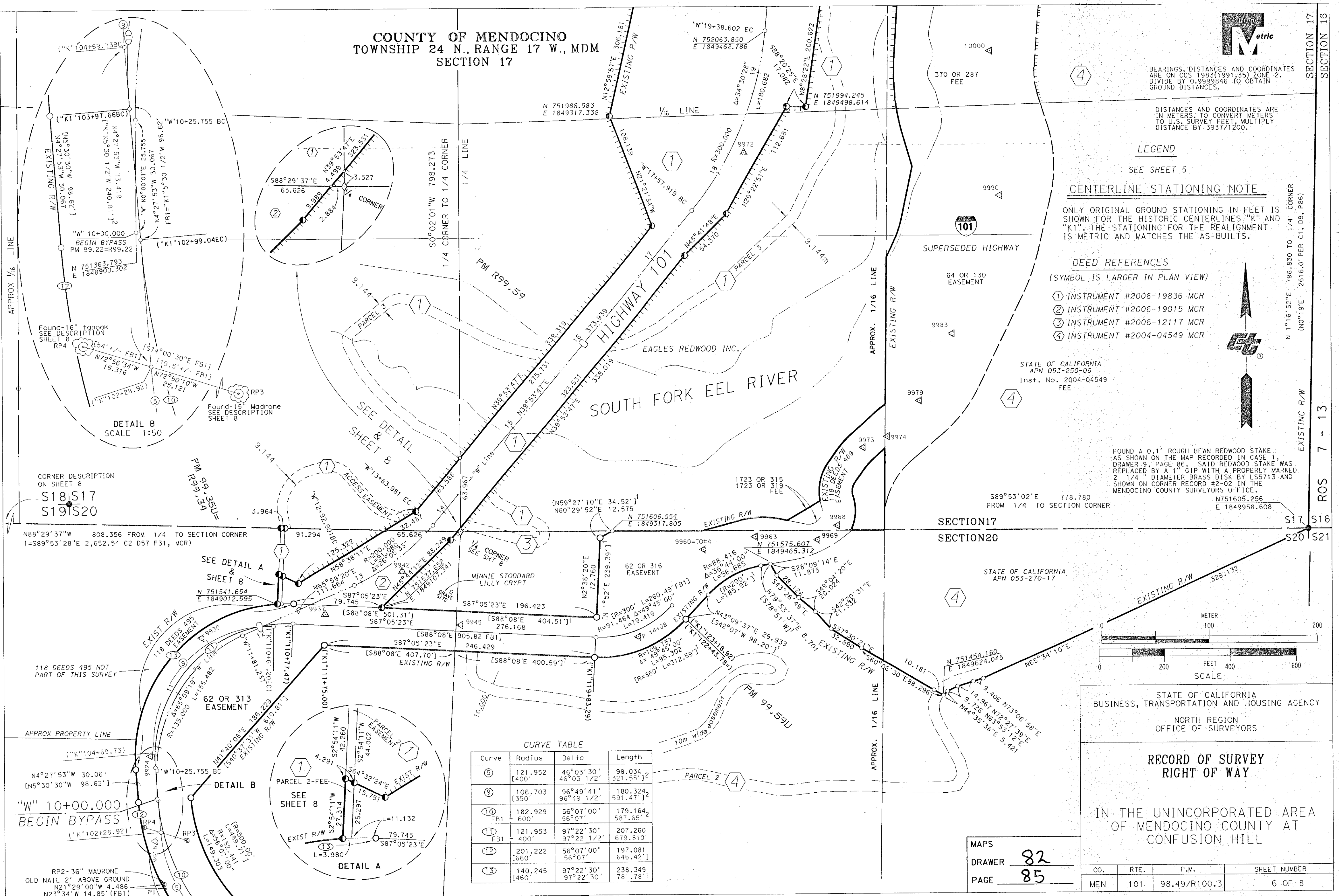
RECORD OF SURVEY  
RIGHT OF WAY

IN THE UNINCORPORATED AREA  
OF MENDOCINO COUNTY AT  
CONFUSION HILL

MAPS

DRAWER 82  
PAGE 85

CO.	RTE.	P.M.	SHEET NUMBER
MEN	101	98.49/R100.3	6 OF 8



CURVE TABLE

Curve	Radius	Delta	Length
⑤	121.952 [400']	46°03'30" 46°03'1/2"	98.034 321.55'] <sup>2</sup>
⑨	106.703 [350']	96°49'41" 96°49'1/2"	180.324 591.47'] <sup>2</sup>
⑩	182.929 600'	56°07'00" 56°07'	179.164 587.65'] <sup>2</sup>
⑪	121.953 400'	97°22'30" 97°22'1/2"	207.260 679.610'] <sup>2</sup>
⑫	201.222 [660']	56°07'00" 56°07'	197.081 646.42'] <sup>2</sup>
⑬	140.245 [460']	97°22'30" 97°22'30"	238.349 781.78'] <sup>2</sup>