

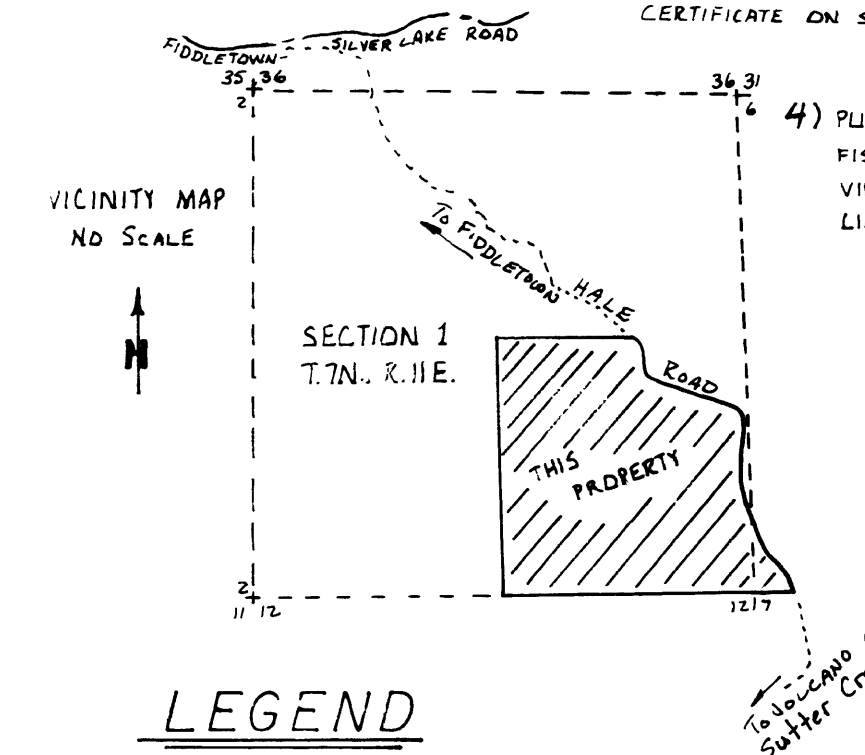
OAK HILL SUBDIVISION

BEING A PORTION OF THE SE 1/4 OF SECTION 1, T.7 N., R.11 E. M.D.M. AND A PORTION OF THE SW 1/4 OF SECTION 6, T.7 N., R.12 E., M.D.M. - AMADOR COUNTY, CAL.

DEED: 334 O.R. 689
140.8± ACRES

NOTES

- 1) THE SOUTH PROPERTY LINE OF PARCELS 6, 7, 8, AND 9, WHICH IS THE NORTH PROPERTY LINE OF PARCEL 16, IS THE CENTERLINE OF DEADMAN'S FORK OF DRY CREEK. THESE PROPERTY LINES WILL THEREFORE MOVE WITH CHANGES OF THE CREEK, BUT ONLY AS THE CENTERLINE OF SAID CREEK CHANGES BY ACCRETION AS OPPOSED TO REVULSION.
- 2) WEST 1/2 OF HALE ROAD (50 FEET) IS OFFERED FOR DEDICATION TO AMADOR COUNTY AND IS ACCEPTED WITH ACCEPTANCE OF THIS SUBDIVISION MAP. DENOTED SEE "CLERK-OF-BOARD-OF-SUPERVISORS" CERTIFICATE ON SHEET 1.
- 3) QUERCUS COURT IS HEREBY OFFERED FOR DEDICATION BUT IS REJECTED BY AMADOR COUNTY BOARD OF SUPERVISORS WITH ACCEPTANCE OF THIS MAP. SEE "CLERK-OF-BOARD-OF-SUPERVISORS" CERTIFICATE ON SHEET 1. DENOTED
- 4) PUBLIC ACCESS FOR PEOPLE TO FISH IN DEADMAN'S FORK IS PROVIDED WITHIN THE 100' SETBACK LINES AS SHOWN HEREON.



LEGEND

- DRAINAGE EASEMENT WITH 50' BUILDING SETBACK LINES.
- 25' BUILDING SETBACK ALONG HALE ROAD AND QUERCUS COURT.
- FD. 3" BRASS CAP STAMPED 51156 ON 1" I.P. IN ROCK MOUND.
- FD. MONUMENT AS NOTED, TAGGED SAME L.S. 3488.
- FD. 1/2" I.P. TAGGED L.S. 3570 PER 23 M 63.
- FD. R.R. SPIKE IN ROAD PER 23 M 63. NOT LOCATED AT E. ROAD.
- SET 1/2" I.P. TAGGED L.S. 3488.
- CALCULATED POINT ONLY
- 5' PUBLIC UTILITY EASEMENT BOTH SIDES OF PROPERTY LINE
- INDICATES EXISTING FENCE LINE
- () INDICATES RECORD PER 23 M 63.
- [] INDICATES RECORD PER 13 M 48.
- 10' P.U.E., RIGHT-OF-WAY, UTILITY MAINTENANCE, PEDESTRIAN AND EQUESTRIAN EASEMENT ALONG ROADS AS SHOWN. THIS AREA IS TO BE KEPT CLEAR FOR COUNTY AND UTILITY MAINTENANCE.
- BASIS OF BEARINGS IS LINE BETWEEN THE NE CORNER AND THE EAST 1/4 CORNER OF SECTION 12, T.7 N., R.11 E., M.D.M. AS SHOWN ON 17 M 45 WITH BEARING: S 01° 34' 32" W. AS NOTED ON MAP.

S6 ROBERT E. HAMM
LAND SURVEYOR
P.O. BOX 935
102 WATER ST.
JACKSON, CAL. 95642
(209) 223-1061

SCALE: 1"=200' OCT., 1979 W.O.# 467 SHEET 2 OF 2

