

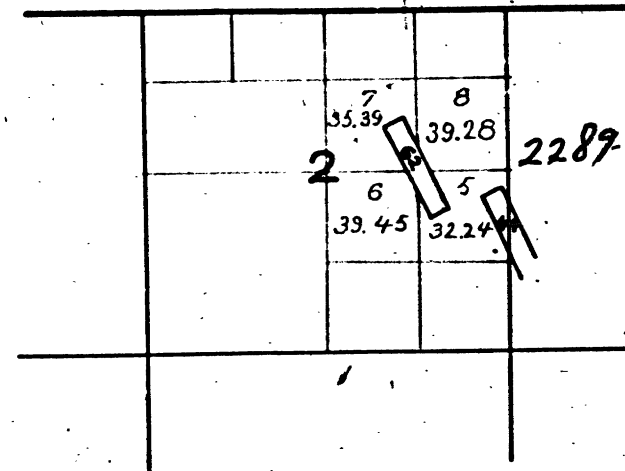
Township N°6 North,

Range N°13 East,

Mount Diablo Meridian.

C.H.H.
Feb.

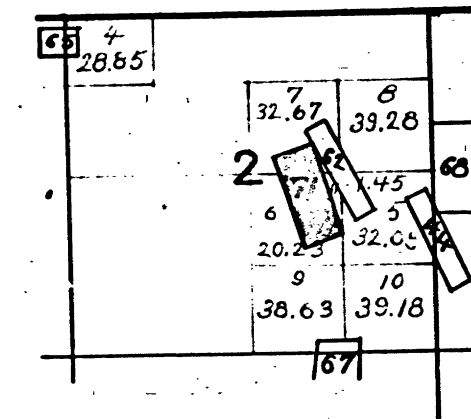
T6N. R.13E. MDM.



The above diagram showing amendments to Section 2, Township N°6 North, Range N°13 East, Mount Diablo Meridian, is correctly copied from the original map as amended and on file in this office.
U.S. Surveyor General's Office.
San Francisco, California.
February 20th 1885.

W.H. Brown
U. S. Surv. Gen'l Cal.

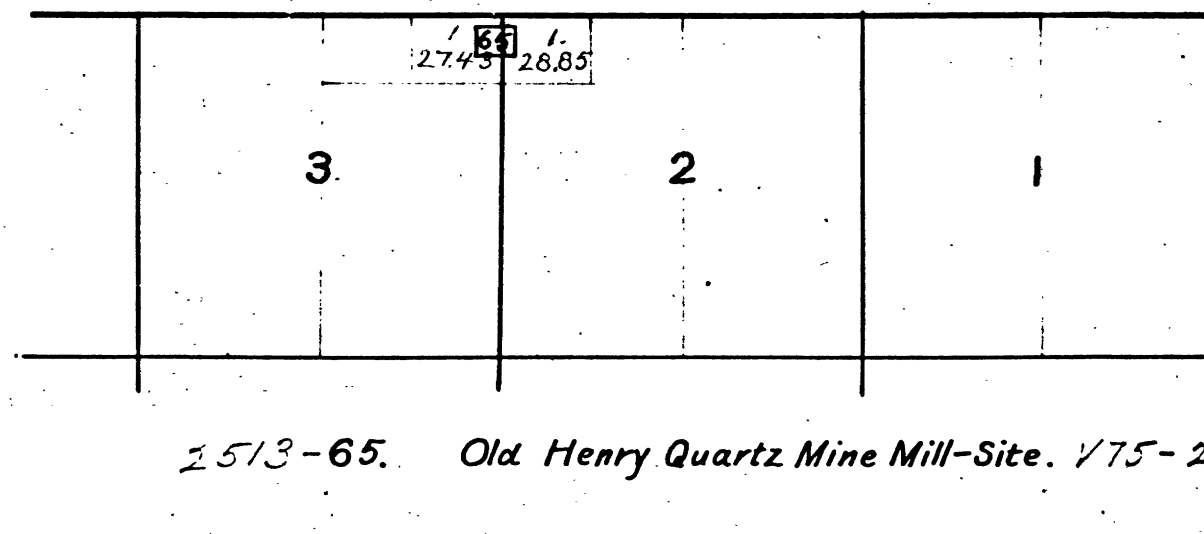
T6N. R.13E. MDM.



The above diagram of Section 2, Township N°6 North, Range N°13 East, Mount Diablo Meridian, is correctly copied from the original map as amended and on file in this office.
U.S. Surveyor-General's Office.
San Francisco, California.
October 11th 1889.

R.O. Hammond Jr.
U. S. Surv. Gen. Cal.

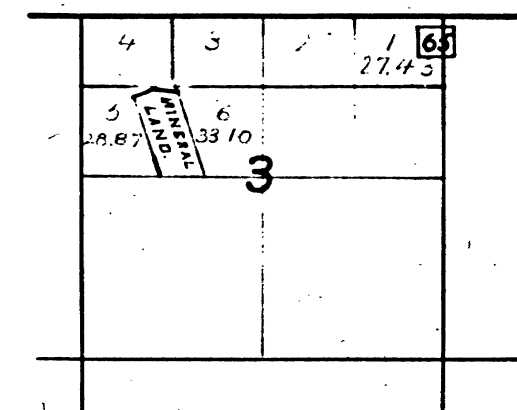
T. N°6N. R. N°13E. MDM.



The above diagram showing amendments to sections 2 and 3, Township N°6 North, Range N°13 East, Mount Diablo Meridian, is correctly copied from the original map as amended and on file in this office.
U.S. Surveyor General's Office.
San Francisco, California.
December 8th 1886.

R.O. Hammond Jr.
U.S. Surv. Gen'l Cal.

T6N. R.13E. MDM.



The above diagram of Section 3, Township 6 North, Range 13 East, Mount Diablo Meridian is correctly copied from the original map as amended and on file in this office.
U.S. Surveyor General's Office.
San Francisco California.
November 24th 1891.

Wm. H. Hall
U.S. Surv. Gen'l. Cal.

DEPARTMENT OF THE INTERIOR,
GENERAL LAND OFFICE,
Washington, D. C. Feb. 5, 1892.
I hereby certify that this is a true copy
of the plats of official survey of the lands
to which it relates, on file in this office.

Wm. H. Hall
Recorder, General Land Office

PLATS OF SEC. SURVEY BY COUTLER
NOT ON FILE IN WASHINGTON.
SEE FIELD SERVICE OFFICER'S
MEMO 5 050-3 DATED 5/5/61

BLM 270