

CORNER RECORD

Document Number CR 8066

City of SAN LEANDRO

County of ALAMEDA, California

Brief Legal Description STREET MONUMENT ON AMHERST COURT AS SHOWN ON MAP OF TRACT 1003 (BK 31 PG 52)

CORNER TYPE

Government Corner ☐ Control ☒
 Meander ☐ Property ☐
 Rancho ☐ Other ☐
 Date of Survey JANUARY 18, 2016

COORDINATES (Optional)

N. _____
E. _____
Zone _____ NAD27 ☐ NAD83 ☐
NAD83 Epoch _____
Elev. _____
Vert. Datum: NGVD29 ☐ NAVD88 ☐
Meas. Units: Metric ☐ Imperial ☐
U.S. Survey Feet ☐

Corner – Left as found ☐ Found and tagged ☐ Established ☐ Reestablished ☒ Rebuilt ☐

Identification and type of corner found: Evidence used to identify or procedure used to establish or reestablish the corner:

ORIGINAL MONUMENT WAS DESTROYED BY A PAVEMENT REHAB PROJECT, AND A NEW MONUMENT HAS BEEN REESTABLISHED IN THE SAME LOCATION AS THE EXISTING MONUMENT PER THE TIES SHOWN ON CR 7694. SET CITY OF SAN LEANDRO 2 5/8" BRASS DISC, STAMPED LS 9225.

A description of the physical condition of the monument as found and as set or reset:

FOUND CUT CROSSES (ON CURB), AS DEPICTED ON SHEET 2 OF THIS CORNER RECORD.

SURVEYOR'S STATEMENT

This Corner Record was prepared by me or under my direction in conformance with the Land Surveyor's Act on MARCH 25, 2016.

Signed [Signature] P.L.S. or R.C.E. No. 9225

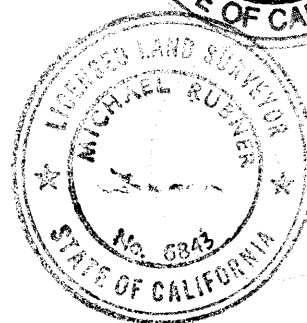
RODNEY A. STEWART II
Kier & Wright, Civil Engineers & Surveyors, Inc., Pleasanton, CA
COUNTY SURVEYOR'S STATEMENT

This Corner Record was received 11 FEBRUARY, 2016
and examined and filed 30 MARCH 2016

Signed Michael Robin P.L.S. or R.S.E. No. 6843

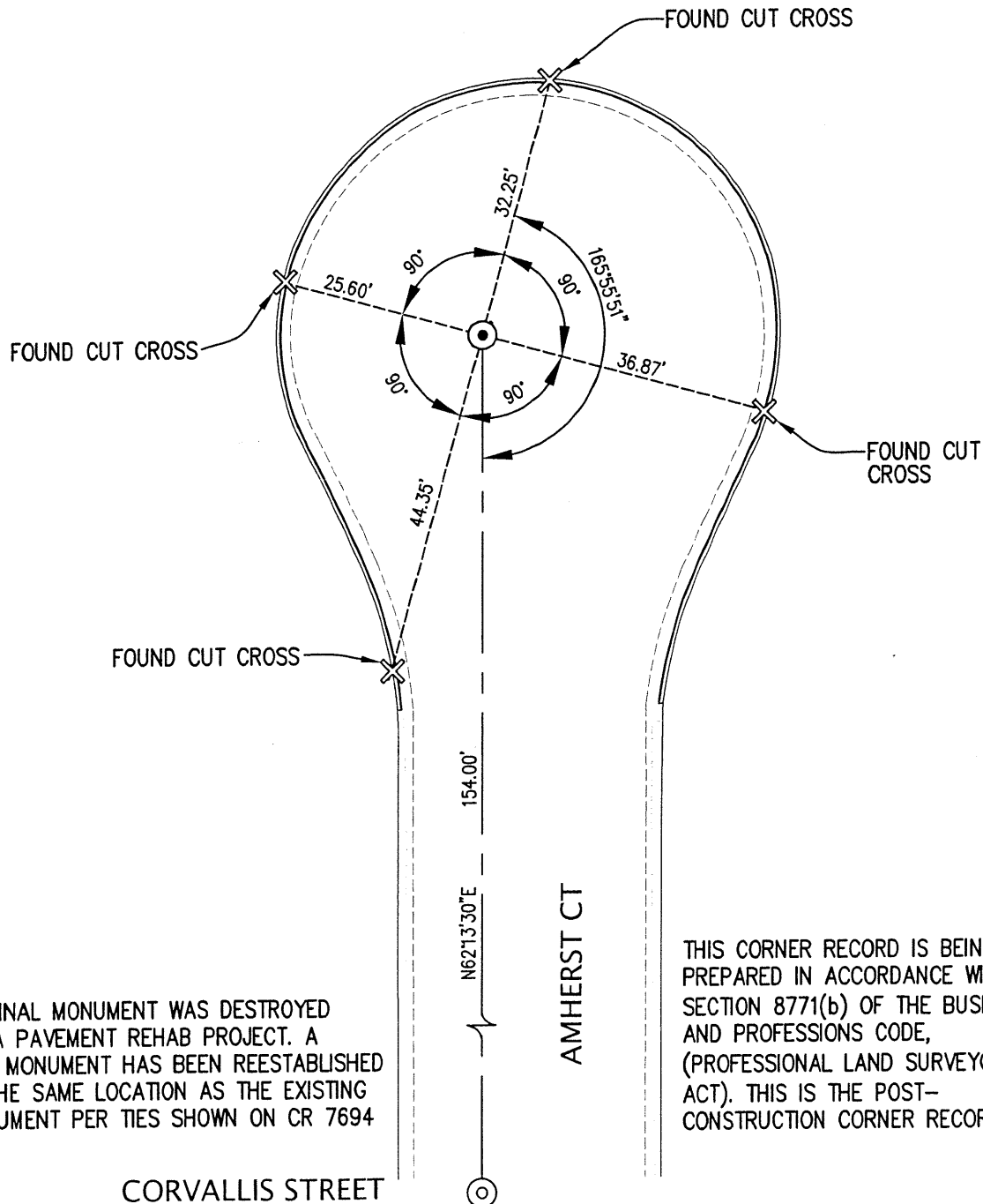
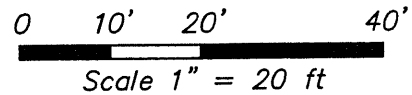
Title COUNTY SURVEYOR

County Surveyor's Comment



(○) SET CITY OF SAN LEANDRO BRASS DISC, STAMPED LS 9225
 ✕ CUT CROSS
 === CURB & GUTTER

 (○) FOUND 1/4" PIN IN CONCRETE



ORIGINAL MONUMENT WAS DESTROYED
BY A PAVEMENT REHAB PROJECT. A
NEW MONUMENT HAS BEEN REESTABLISHED
IN THE SAME LOCATION AS THE EXISTING
MONUMENT PER TIES SHOWN ON CR 7694

THIS CORNER RECORD IS BEING
PREPARED IN ACCORDANCE WITH
SECTION 8771(b) OF THE BUSINESS
AND PROFESSIONS CODE,
(PROFESSIONAL LAND SURVEYORS
ACT). THIS IS THE POST-
CONSTRUCTION CORNER RECORD.

KW#A15598