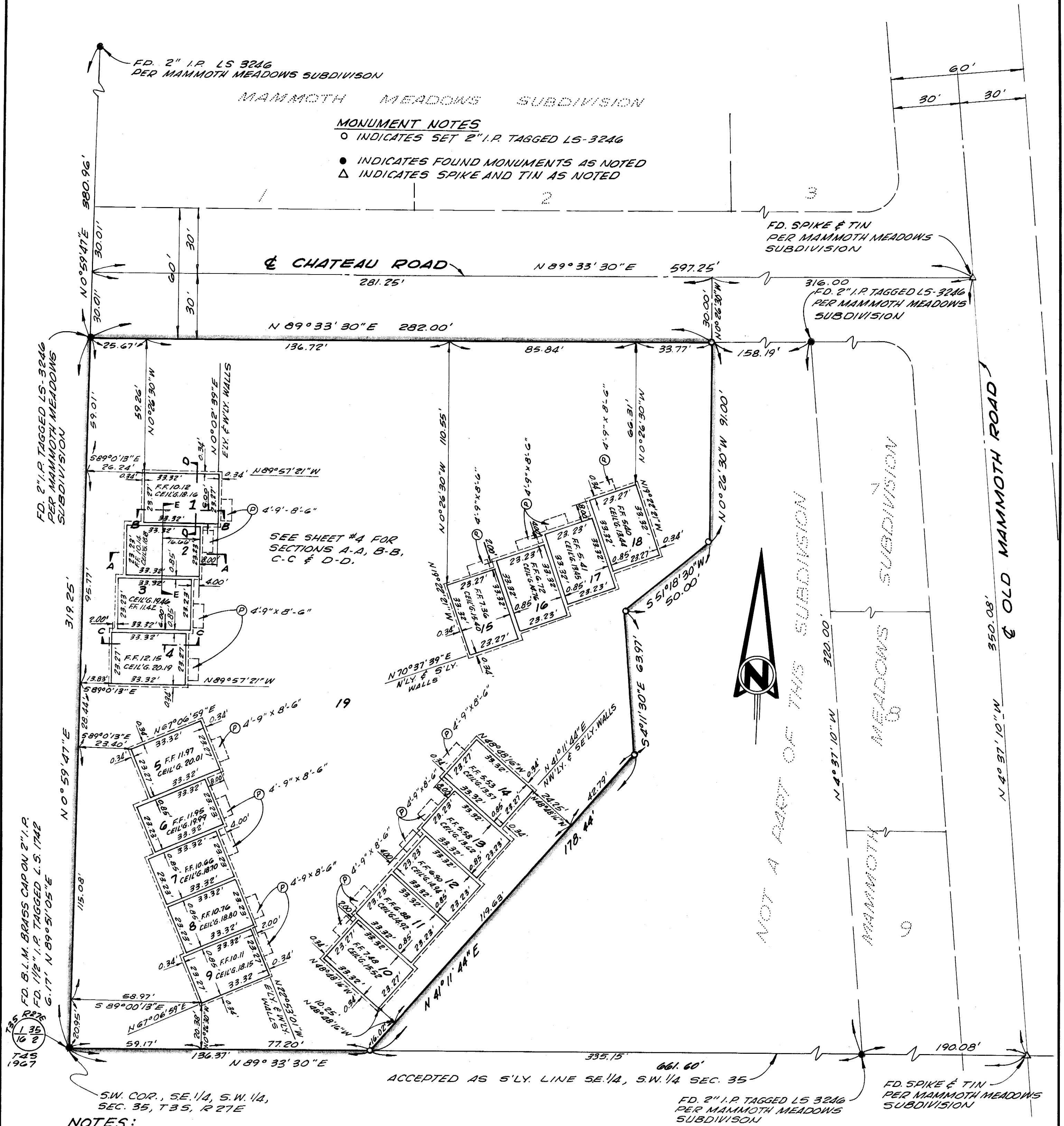


CHATEAU BLANC NO. I

IN THE UNINCORPORATED TERRITORY OF MONO COUNTY, CALIFORNIA
BEING A SUBDIVISION OF A PORTION OF THE S 1/2 OF THE SE 1/4 OF
THE S.W. 1/4 OF SECTION 35, TOWNSHIP 3 SOUTH, RANGE 27 EAST
OF THE MOUNT DIABLO MERIDIAN, COUNTY OF MONO, CALIFORNIA
DECEMBER 1968
19 LOTS
GERALD F. OLDENBURG LS. 3246
1.738 ACRES
FOR CONDOMINIUM PURPOSES



NOTES:

1. LOT 19 COMPRISES THE LAND AND REAL PROPERTY WITHIN THE BLUE BORDER OF THIS SUBDIVISION, EXCEPT THEREFROM UNITS 1 THROUGH 18, INCLUSIVE, AS SHOWN AND DESCRIBED.
2. EACH PARCEL SHOWN AND DESIGNATED WITH ONE OF THE NUMBERS 1 THROUGH 18, INCLUSIVE, OR ONE OF SUCH NUMBERS FOLLOWED BY THE SUFFIX "U" IS A SUBDIVISION OF AIR SPACE. PARCELS DESIGNATED WITH ONLY A NUMBER ARE FIRST FLOOR PARCELS IN A BUILDING BUILT OR TO BE BUILT. PARCELS DESIGNATED WITH A NUMBER FOLLOWED BY THE SUFFIX "U" ARE SECOND FLOOR PARCELS IN A BUILDING BUILT OR TO BE BUILT.
3. EACH UNIT IS DESIGNATED WITH ONE OF THE NUMBERS 1 THROUGH 18, INCLUSIVE. EACH UNIT IS COMPRISED OF TWO PARCELS, ONE DESIGNATED WITH ONE OF THE NUMBERS 1 THROUGH 18, INCLUSIVE, AND THE OTHER DESIGNATED WITH THE SAME NUMBER FOLLOWED BY THE SUFFIX "U".
4. ON ALL PARCELS, THE SOLID LINES INDICATE INTERIOR FACES OF WALLS OF A BUILDING BUILT OR TO BE BUILT. THICKNESS OF OUTSIDE WALLS IS 0.34'. THICKNESS OF ALL COMMON WALLS IS 0.85'.
5. THE BOUNDARIES OF THE PARCELS SHOWN HEREON ARE MEASURED TO THE INTERIOR SURFACES OF THE VERTICAL, HORIZONTAL AND INCLINED PLANES AT THE LIMITS OF THE ELEVATIONS OR DIMENSIONS SHOWN OR

DESCRIBED. THE BOUNDARIES OF EACH PARCEL ARE THE INTERIOR FACES OF ITS WALLS AND THE INTERIOR SURFACES OF ITS FINISHED FLOOR AND CEILING.
6. "F.F." INDICATES FINISHED FLOOR ELEVATIONS.
7. "CEIL'G" INDICATES CEILING ELEVATIONS OF THE FIRST FLOOR PARCELS.
8. AREAS DESIGNATED BY THE LETTER "P" ARE PORCHES ADJACENT TO PARCELS AS SHOWN AND ARE NOT A PART OF THE PARCELS OR UNITS.
9. AREAS DESIGNATED BY THE LETTER "S" ARE SUN DECKS ADJACENT TO PARCELS AS SHOWN AND ARE NOT A PART OF THE PARCELS OR UNITS.
10. MAMMOTH MEADOWS SUBDIVISION IS RECORDED IN BOOK 6 PAGE 26, MAPS, MONO COUNTY RECORDERS OFFICE.
BENCH MARK: ELEVATIONS HEREON ARE BASED ON THE TOP OF THE B.L.M. MONUMENT MARKING THE SW CORNER OF THE SE 1/4 SW 1/4 SEC. 35-3-27 BEING 10.00' (ASSUMED)
BASIS OF BEARINGS
BEARINGS HEREON ARE BASED ON THE CENTERLINE OF CHATEAU ROAD BEING N 89° 33' 30" E PER MAMMOTH MEADOWS SUBDIVISION.