

BK 41 Pg 67

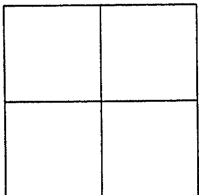
CORNER RECORD

Document Number CR 4569

City of OAKLAND

County of ALAMEDA, California

Brief Legal Description IRON PIN MONUMENT LOCATED WITH CLAREMONT AVENUE. (2 SW 34)
BM



CORNER RECORD

Government Corner ☐ Control ☒
Meander ☐ Property ☐
Rancho ☐ Other ☐
Date of Survey 4/19/11

COORDINATES
(Optional)

N. _____
E. _____
Zone _____ Datum _____
Elev. _____

Corner — Left as found ☒ Found and tagged ☐ Established ☐ Reestablished ☐ Rebuilt ☐

Identification and type of corner found: Evidence used to identify or procedure used to establish or reestablish the corner:
FOUND IRON PIN IN MONUMENT WELL LOCATED WITHIN CLAREMONT AVENUE.

AS SHOWN ON CITY OF OAKLAND MONUMENT MAP, PAGE 343.

THIS POINT WAS REFERENCED PRIOR TO A CONSTRUCTION PROJECT IN THE VICINITY.

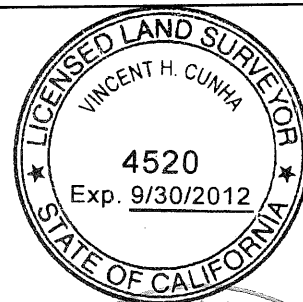
A description of the physical condition of the monument as found and as set or reset:
FOUND AND SET POINTS AS SHOWN ON PAGE 2.

THESE TIES ARE FOR THE PURPOSE OF PERPETUATING THE FOUND MONUMENTATION.

NO CLAIM IS MADE AS TO THE RELATIONSHIP OF THE POINTS OR LINES SHOWN HEREON
TO TRUE BOUNDARY LOCATIONS.

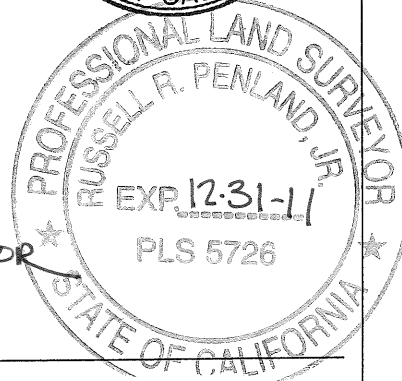
SURVEYOR'S STATEMENT

This Corner Record was prepared by me or under my direction in conformance with
the Land Surveyors' Act on JULY 12, 2011.
Signed Vincent H. Cunha L.S. Number LS 4520
VINCENT H. CUNHA



COUNTY SURVEYOR'S STATEMENT

This Corner Record was received 1-22-2011 and examined
and filed 10-13-2011.
Signed Russell R. Penland, Jr. Title COUNTY SURVEYOR



County Surveyor's Comment

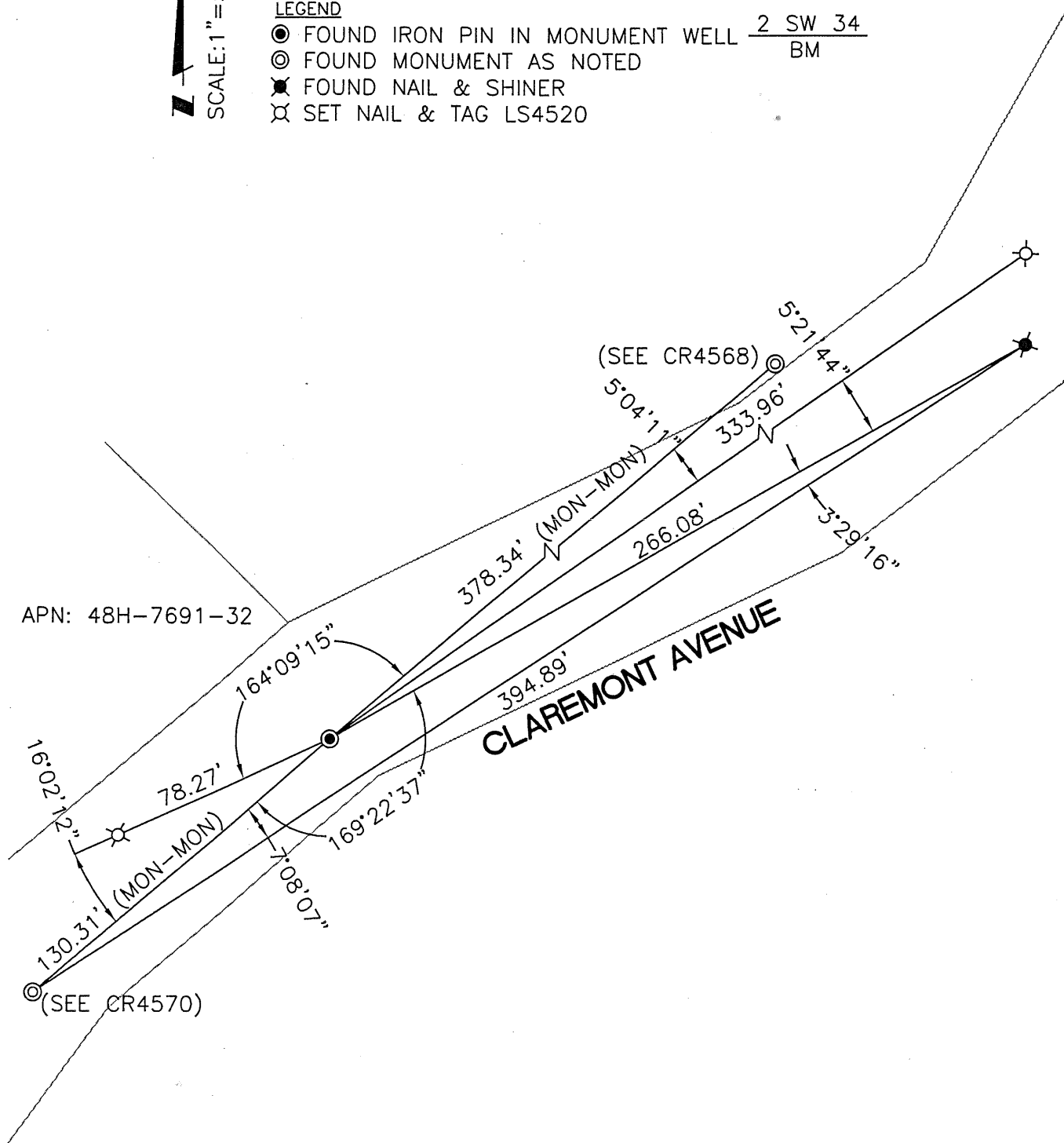
DJ73H1

SCALE: 1" = 50'

LEGEND

- FOUND IRON PIN IN MONUMENT WELL
- ⊙ FOUND MONUMENT AS NOTED
- ✕ FOUND NAIL & SHINER
- ⌵ SET NAIL & TAG LS4520

2 SW 34
BM



APN: 48H-7691-32

CLAREMONT AVENUE

210078\CLAREMONT\CR-3