

ALL ITEMS RELATED TO HVAC SYSTEM SHALL BE PROVIDED AND INSTALLED BY CONTRACTOR, CONTACT LENNOX REPRESENTATIVE ABOVE.

- THERMOSTATS: REMOTE SENSE TYPE, 24/7 PROGRAMMABLE AND CAPABLE OF OPERATING ROOFTOP UNITS AND ACCESSORIES

- DUCT MOUNTED SMOKE DETECTORS: IONIZATION TYPE/UL LISTED

NOTE:

1. UNIT WEIGHTS ABOVE INCLUDE ACCESSORIES AND CURB.	10. STANDARD 14" ROOF CURB
2. FACTORY COATED EVAPORATOR COIL ON ALL UNITS	11. COIL GUARDS (FIELD INSTALL)
3. NOT USED.	12. FACTORY DISCONNECT
4. SINGLE ENTHALPY ECONOMIZER, HIGH PERFORMANCE, LOW-LEAK	13. FACTORY GFCI (FIELD WIRED)
5. DAMPERS, W/ GRAVITY EXHAUST	14. LENNOX COMMERCIAL CS7500 THERMOSTAT WITH REMOTE SENSOR (FIELD WIRED)
6. TITLE 24 COMPLIANT	
7. RETURN AIR SMOKE DETECTOR (FIELD INSTALLED)	
8. FACTORY HINGED ACCESS DOORS	
9. MERV 8 PLEATED FILTERS	
10. MULTI SPEED (MSAV) BLOWER MOTORS	



MAKE-UP AIR UNIT SCHEDULE

MARK	MFR/ MODEL	LOCATION	SERVICE AREA	GAS HEAT	TYPE	COOLING	CFM	ESP	MOTOR	REMARKS
MA-1	CAPTIVEAIRE A3-D-500-240-MPU	ROOF-TOP	KITCHEN HOOD #1 & #2	INPUT: 271,738 BTUH OUTPUT: 250,000 BTUH	DIRECT FIRE GAS HEATED, DX COOLED SUPPLY, DOWN DISCHARGE	DUAL CIRCUIT 5/5 MODULAR PACKAGED COOLING OPTION	5,540	0.90"	10 HP 208V3PH/60HZ	GAS FIRED MAKEUP AIR UNIT WITH (2) 24ABB360 5 TON, DUAL CIRCUIT AIR COOLED CONDENSING UNITS, REFER TO KITCHEN HOOD PLANS (400 SERIES) FOR INFORMATION, 4-5 WEEK LEAD TIME, SHIPPING INCLUDED IN PRICE, SHIPS FROM TYLER, TX. SHIPS SEPARATE, FREIGHT INCLUDED. NOTE: FACTORY OPTIONS SHALL INCLUDE NON-CORROSIVE COATING AND HAIL GUARD PROTECTION.

DIFFUSER & GRILLE SCHEDULE									
DESIGNATION	MANUFACTURER	MODEL NO	TYPE	COLOR	NOM NECK SIZE	NOM FACE SIZE	FRAME TYPE	NC MAX	REMARKS
A	TITUS	PCS-3	PERFORATED ADJUSTABLE CORE	²⁶ / ₃₂ WHITE	PER PLAN	24" x 24"	LAY-IN T-BAR	< 30	INSULATION BLANKET FOR BACKPAN, CONTRACTOR FURNISHED ROUND NECK ADAPTER
B	TITUS	PCS-3	PERFORATED ADJUSTABLE CORE	²⁶ / ₃₂ WHITE	PER PLAN	20" x 20"	SURFACE	< 30	WITH 20X20 SURFACE FRAME, REQUIRES A 20.5"X20.5" CEILING OPENING, INSULATION BLANKET, D-100 RADIAL DAMPER
C	TITUS	PCS-3	PERFORATED ADJUSTABLE CORE	²⁶ / ₃₂ WHITE	PER PLAN	12" x 12"	SURFACE	< 30	WITH12X12 SURFACE FRAME, REQUIRES A 12.5"X12.5" CEILING OPENING, INSULATION BLANKET, D100 RADIAL DAMPER
D	TITUS	PAR-3	PERFORATED RETURN	²⁶ / ₃₂ WHITE	22" x 22"	24" x 24"	LAY-IN T-BAR	< 35	CONTRACTOR FURNISHED INSULATE RETURN BOX FOR CONNECTING FLEX DUCT
E	TITUS	PAR-3	PERFORATED EXHAUST	²⁶ / ₃₂ WHITE	PER PLAN	12" x 12"	SURFACE	< 30	WITH12X12 SURFACE FRAME, REQUIRES A 12.5"X12.5" CEILING OPENING, D100 RADIAL DAMPER
F	TITUS	PAR-3	PERFORATED RETURN	²⁶ / ₃₂ WHITE	22" x 22"	24" x 24"	LAY-IN T-BAR	< 35	CONTRACTOR FURNISHED INSULATE RETURN BOX FOR CONNECTING FLEX DUCT
H	TITUS	PCS-3	PERFORATED ADJUSTABLE CORE	²⁶ / ₃₂ WHITE	PER PLAN	24" x 24"	LAY-IN T-BAR	< 30	WITH INSULATION BLANKET, BALANCE USING MANUAL VOLUME DAMPER AT BRANCH DUCT
J	TITUS	PCS-3	PERFORATED ADJUSTABLE CORE	²⁶ / ₃₂ WHITE	PER PLAN	24" x 24"	LAY-IN T-BAR	< 30	AG95 OBD, INSULATION BLANKET FOR BACKPAN, CONTRACTOR FURNISHED ROUND NECK ADAPTER
K	TITUS	PCS-3	PERFORATED ADJUSTABLE CORE	²⁶ / ₃₂ WHITE	PER PLAN	12" x 12"	SURFACE	< 30	WITH12X12 SURFACE FRAME, REQUIRES A 12.5"X12.5" CEILING OPENING, INSULATION BLANKET, D100 RADIAL DAMPER
L	TITUS	PCS-3	PERFORATED ADJUSTABLE CORE	²⁶ / ₃₂ WHITE	PER PLAN	12" x 12"	SURFACE	< 30	WITH12X12 SURFACE FRAME, REQUIRES A 12.5"X12.5" CEILING OPENING

NOTE: PROVIDE FACTORY INSTALLED BACK PAN INSULATION ON AIR DEVICES.
 HVAC CONTRACTOR IS TO PURCHASE ALL AIR DEVICES FROM PANDA AIR CONDITIONING NATIONAL ACCOUNT VENDOR THERMAIR SYSTEMS INC.
 PLEASE CONTACT RON CAMPTON AT 602-705-5010 OR EMAIL ronc@thermairsystems.com

AIR BALANCE SCHEDULE				
ITEM	SUPPLY AIR	RETURN AIR	MAKE-UP AIR	EXHAUST
MAU1	0	0	+5,540	0
EF-1	0	0	0	-3,300
EF-2	0	0	0	-3,000
EF-3	0	0	0	-450
RTU-1	+2,400	-2,000	400	0
RTU-2	+3,000	-2,500	500	0
RTU-3	+2,400	-1,900	500	0
TOTAL	+7,800	-6,400	+6,940	-6,750
BUILDING PRESSURE = +190 CFM				
BALANCE TOLERANCES AS FOLLOWS: KITCHEN EXHAUST HOODS: 0% TO +10% OUTDOOR AIR: 0% TO +10% SUPPLY & RETURN DIFFUSERS: ±10% TOILET EXHAUST: ±10% BALANCE RTU SUPPLY AND RETURN PRIOR TO TURNING ON EXHAUST FANS. KITCHEN EXHAUST FANS SHALL BE BALANCED WITH VELOCITY MATRIX OR A 4" ANEMOMETER				

EXHAUST FAN SCHEDULE			
FAN NO.			
LOCATION	ROOF	ROOF	ROOF
AREA SERVED	KITCHEN GREASE EXHAUST HOOD #1	KITCHEN GREASE EXHAUST HOOD #2	RESTROOMS
FAN DUTY	AIR EXHAUST	AIR EXHAUST	AIR EXHAUST
FAN TYPE	CENTRIFUGAL DIRECT DRIVE	CENTRIFUGAL DIRECT DRIVE	CENTRIFUGAL DIRECT DRIVE
FAN ARRANGEMENT	UPBLAST	UPBLAST	DOWNBLAST
MIN. WHEEL DIAMETER	-	-	-
PERFORMANCE	C.F.M.	3,300	3,000
	E.S.P.	1.515"	1.262"
	B.H.P.	1.8	1.4
	FAN R.P.M.	1363	1241
MOTOR	MOTOR H.P.	3.0	3.0
	ELEC. CHARACTERISTICS	208V/3PH/60HZ	208V/3PH/60HZ
	MOTOR R.P.M.	1725	1725
	MOTOR SPECIAL FEATURES	OPEN DRIP-PROOF	OPEN DRIP-PROOF
ACCESSORIES		1. VENTED ROOF CURB 2. HINGED AND CHAINED FAN INSTALLATION FOR DUCT ACCESS	1. VENTED ROOF CURB 2. HINGED AND CHAINED FAN INSTALLATION FOR DUCT ACCESS
			1. ROOF CURB 2. BACKDRAFT DAMPER
MANUFACTURER		CAPTIVEAIRE MODEL DU180HFA WT. 190 LBS	CAPTIVEAIRE MODEL DR12HFA WT. 50 LBS

NOTES:

1. KITCHEN EXHAUST FANS SHALL BE ELECTRICALLY INTERLOCKED WITH MAKE-UP AIR UNIT AND ROOFTOP UNITS.
2. FOR WIRING DIAGRAM SEE 5/M-501

HVAC CONTROL SETTINGS

ACH HVAC UNIT SHALL BE PROVIDED WITH CONTROLS AS FOLLOWS:

THERMOSTAT: LENNOX COMMERCIAL PROGRAMMABLE THERMOSTAT WITH REMOTE TEMPERATURE SENSOR. SEE SHEET M-100 FOR THERMOSTAT AND SENSOR LOCATIONS.

ALL THERMOSTATS SHALL HAVE MANUAL OVERRIDE.

ACH UNIT CONTROL SHALL BE SET UP INITIALLY AS FOLLOWS:

CONTRACTOR SHALL DETERMINE OCCUPIED PERIOD FROM OWNER.

AN OPERATION SHALL BE CONTINUOUS DURING OCCUPIED PERIOD AND CYCLE WITH COOLING/HEATING DURING UNOCCUPIED PERIOD.

PROGRAMMED SETPOINTS (FOR EACH THERMOSTAT):

COOLING OCCUPIED:	75°F.
COOLING UNOCCUPIED:	85°F.
HEATING OCCUPIED:	68°F.
HEATING UNOCCUPIED:	50°F.

NOTE: DEVIATIONS FROM THE ABOVE MAY RESULT IN UNACCEPTABLE AIR QUALITY, COMFORT AND/OR ENERGY CONSUMPTION.

AIR CURTAIN SCHEDULE





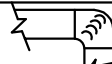

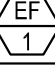

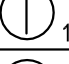

EQUIP.	MFR/MODEL	DESCRIPTION
(M8A)	MARS STD242-UJ-OB	(2)JUNHEATED AIR CURTAIN (SERVICE DOOR). 115/1/60 WEIGHT 65 LBS. PROVIDED BY PANDA EXPRESS
(M9A)	QUICK-SERV CF-25	AIR CURTAIN (WINDOW NON-HEATED). 120/1/60, 20 AMP WEIGHT 30 LBS REFERENCE ARCHITECTURAL WINDOW SCHEDULE FOR HEATED OR NON-HEATED UNIT. PROVIDED BY GC.
NOTES: INSTALL ACCORDING TO MANUFACTURER'S INSTRUCTIONS.		

MA-1 CONTROL SETTINGS

EACH UNIT CONTROL SHALL BE SET UP INITIALLY AS FOLLOWS:

FAN OPERATION SHALL BE CONTINUOUS DURING COOKING OPERATION
INTERLOCK WITH KITCHEN EXHAUST FANS. REFER TO HOOD DRAWINGS.

PROGRAMMED SETPOINTS :	
COOLING :	85°F.
HEATING :	55°F.

MECHANICAL LEGEND		
SYMBOL	ABBREVIATION	DESCRIPTION
	ABV	ABOVE
	AFF	ABOVE FINISHED FLOOR
	CLG	CEILING
	DN	DOWN
		DUCT SECTIONS (SUPPLY, EXHAUST, RETURN)
		FLEXIBLE DUCT
	MVD	MANUAL VOLUME DAMPER
	OBD	OPPOSED BLADE DAMPER
	MFR	MANUFACTURER
	MIN	MINIMUM
	OSA	OUTSIDE AIR
		ROUND RIGID DUCTWORK
	TSP	TOTAL STATIC PRESSURE
		TURNING VANES
		CONSTRUCTION NOTES
		MECHANICAL EQUIPMENT DESIGNATION
		SMOKE DETECTOR
		THERMOSTAT / UNIT
		REMOTE SENSOR / UNIT

MECHANICAL SPECIFICATIONS

3. WORK INCLUDES INSTALLATION OF HVAC SYSTEMS, INCLUDING GREASE EXHAUST FANS AND MAKE-UP AIR UNIT FOR KITCHEN HOODS, SPACE HEATING/AIR CONDITIONING SYSTEMS, SUPPLY, RETURN, EXHAUST, AND GREASE EXHAUST DUCTWORK, GRILLES, REGISTERS, DIFFUSERS, COMPLETE CONTROLS SYSTEM, INTERLOCK WIRING FOR OPERATION OF KITCHEN HOODS, EXHAUST FANS, AND MAKE-UP AIR UNIT, DUCT INSULATION, AND RELATED ITEMS NECESSARY FOR A COMPLETE FUNCTIONING SYSTEM AS INDICATED ON THE PLANS. FURNISH ALL NEW MATERIALS AND EQUIPMENT UNLESS NOTED OTHERWISE (U.N.O.).
2. DRAWINGS FOR HVAC WORK ARE DIAGRAMMATIC, SHOWING THE GENERAL LOCATION, TYPE, LAYOUT AND REQUIRED EQUIPMENT. DRAWINGS SHALL NOT BE SCALED FOR EXACT MEASUREMENTS. AS REQUIRED, REFER TO ARCHITECTURAL AND MANUFACTURER'S STANDARD INSTALLATION DRAWINGS FOR EQUIPMENT CONNECTIONS AND INSTALLATION REQUIREMENTS. FURNISH AND INSTALL DUCTWORK, CONNECTIONS, ACCESSORIES, OFFSETS, AND MATERIALS NECESSARY TO FACILITATE SYSTEM'S FUNCTIONING AS INDICATED BY THE DESIGN AND EQUIPMENT SHOWN ON PLANS.
3. CODE COMPLIANCE: ALL WORK COVERED BY THIS SECTION SHALL BE IN ACCORDANCE WITH ALL LOCAL CODES AND ACCEPTABLE TO THE AUTHORITY HAVING JURISDICTION.
4. COORDINATE WORK WITH OTHER TRADES. EQUIPMENT FURNISHED BY OTHERS AND OWNER REQUIREMENTS. PROVIDE DUCT RISES AND DROPS AS REQUIRED FOR INSTALLATION AND/OR TRADE COORDINATION. NOTIFY ARCHITECT OF ANY DISCREPANCIES BEFORE STARTING WORK. WORK SHALL BE PERFORMED BY EXPERIENCED TRADESMEN AND THEIR WORK SHALL BE OF HIGH STANDARD ACCEPTABLE TO THE OWNER.
5. DUCTWORK: DUCT SYSTEMS SHALL BE CONSTRUCTED, INSTALLED, SEALED AND INSULATED AS PROVIDED IN THE INT'L ENERGY AND MECHANICAL CODES. SHEET METAL SHALL BE IN ACCORDANCE WITH ASHRAE AND SMACNA STANDARDS. SHEET METAL SHALL BE GALVANIZED OF LOCK-FORMING QUALITY, ASTM A-525, UNLESS OTHERWISE NOTED. DUCT DIMENSIONS ON DRAWINGS ARE MET INSIDE CLEAR DIMENSIONS ON LINED DUCTS OR SHEET METAL DIMENSIONS ON UNLINED DUCTS. ALL ANGLE IRON USED FOR SUPPORT SHALL BE GALVANIZED. ROUND RIGID DUCTWORK SHALL CONFORM TO SMACNA TABLE 3-2.
6. INSTALL DUCT HIGH AS POSSIBLE WITHIN JOIST SPACE. CONSULT ARCHITECT AND ENGINEER FOR ALTERNATE ROUTING IF CONFLICT OCCURS.
7. SEAL ALL TRANSVERSE AND LONGITUDINAL DUCT SEAMS AIR-TIGHT. PROVIDE TURNING VANES AT ALL ELBOWS OR OFFSETS EXCEEDING 30 DEGREES.
8. GREASE EXHAUST SYSTEM: ALL GREASE EXHAUST DUCTS SHALL BE PREFABRICATED CAPTIVE/FAIRE DOUBLE WALL GREASE DUCT. PROVIDE RATED ACCESS DOORS AT ALL ELBOWS AND OFFSETS NECESSARY FOR COMPLETE CLEANING OF GREASE DUCT. PROVIDE MINIMUM 30"x30" UNOBSTRUCTED ACCESS OR ROUTE FROM THE CEILING TO EACH ACCESS DOOR. DO NOT BLOCK ACCESS WITH PLUMBING, ELECTRICAL OR HVAC OBSTRUCTIONS. REFER TO SHEETS M-400 TO M-410.
9. DUCT INSULATION: PROVIDE DUCT WRAP FOR ALL DUCTS ABOVE CEILING, INCLUDING VERTICAL, HORIZONTAL, RIGID AND FLEXIBLE DUCTS, EXCLUDING PREFABRICATED PREINSULATED DUCTS AND GREASE DUCTS. DUCT WRAP SHALL BE JOINS MANVILLE MICROILITE OR EQUIVALENT WITH FOIL/SCRM/KRAFT, 1 IN THICKNESS, 1.5 POUNDS/FT³ DENSITY. DUCT WRAP SHALL BE BONDED GLASS FIBERS IN THERMOSETTING RESIN MEETING NFPA 90A, WITH K VALUE NOT TO EXCEED 0.23 AT 75 DEGREES F. FLAME SPREAD AND SMOKE DEVELOPED RATINGS SHALL NOT EXCEED 25/50. APPLY 100% ADHESIVE COVERAGE TO SHEET METAL DUCTWORK. PROVIDE ADDITIONAL MECHANICAL FASTENERS ON DUCTS OVER 12" WIDE OR 16" HIGH. MECHANICAL FASTENERS SHALL BE "GRIPNAIL" OR WELDED PIN AND WIRE CLIPS SPACED PER SMACNA STANDARDS.
10. FLEX DUCT: PROVIDE FACTORY ASSEMBLED CLASS 1 AIR DUCT (UL 181) WITH FIBERGLASS INSULATION AND REINFORCED OUTER PROTECTIVE COVER/PAV BARRIER. FLEX DUCT SHALL MEET NFPA 90A WITH FLAME SPREAD UNDER 25, SMOKE DEVELOPED UNDER 50 AND SHALL BE RATED FOR 2" W.C. PRESSURE AND 0 TO 250 DEGREE TEMPERATURE. FLEX DUCT MAXIMUM ALLOWED LENGTH TO BE PER LOCAL CODE.
11. PROVIDE INSULATION APPLIED TO COMPLETE BACKPAN OF AIR DEVICES.
12. ACCESS DOOR: PROVIDE HINGED ACCESS PANELS IN DUCTWORK WHERE SHOWN AND AS REQUIRED FOR ACCESS TO DAMPERS OR EQUIPMENT. PROVIDE INSULATED ACCESS DOORS IN INSULATED DUCTWORK.
13. AUTOMATIC TEMPERATURE CONTROL: CONTRACTOR TO PROVIDE AND INSTALL 24/7 PROGRAMMABLE THERMOSTATS AND REMOTE SENSORS.
14. KITCHEN HOOD EQUIPMENT INTERLOCK: PROVIDE ALL INTERLOCK AND CONTROL WIRING FOR KITCHEN HOOD SYSTEMS, WHICH INCLUDES EFF, EF2, MA1 AND ANSUL SYSTEM SHUT DOWN INTERLOCK TO MAKE-UP AIR FAN. UPON ACTIVATION OF ANSUL SYSTEM, MAKE-UP AIR FAN SHALL BE DEACTIVATED. PROVIDE ALL NECESSARY CONTROLS AND WIRING FOR A COMPLETE AND OPERABLE SYSTEM. INTERLOCK GREASE EXHAUST FANS AND MAKE-UP AIR UNIT TO START SIMULTANEOUSLY FROM SWITCH PROVIDED AT HOOD.
15. TEST AND ADJUST EACH PIECE OF EQUIPMENT AND EACH SYSTEM AS REQUIRED TO ASSURE PROPER AIR BALANCE AND OPERATION. PROVIDE A CERTIFIED AIR BALANCE REPORT TO OWNER SHOWING DESIGN AND MEASURED AIR VOLUMES, STATIC PRESSURES, FAN RPMs, ETC. AIR BALANCE CONTRACTOR SHALL ADJUST SYSTEMS TO MINIMIZE NOISE AND VIBRATION, AND TO ASSURE PROPER FUNCTION OF CONTROLS. MAINTENANCE OF TEMPERATURE AND OPERATION. GENERAL CONTRACTOR TO OBTAIN ALL INSPECTIONS REQUIRED BY LOCAL CODE AND GUARANTEE WORK AND INSTALLATION FOR ONE YEAR AFTER ACCEPTANCE BY OWNER. GENERAL CONTRACTOR TO FURNISH OWNER WITH TWO COMPLETE SETS OF AS-BUILT DRAWINGS INDICATING ALL INSTALLED WORK, INCLUDING ALL CONTROL WIRING DIAGRAMS AND INTERLOCK FOR SYSTEM OPERATION.
16. CONTRACTOR SHALL BE RESPONSIBLE FOR INSTALLATION OF ECONOMIZERS INCLUDING INSTALLATION OF ALL NECESSARY SENSORS AND CONNECTIONS TO THERMOSTAT. PROVIDE SUPPORT OF ECONOMIZERS PER MANUFACTURER'S REQUIREMENTS AND TEST FOR PROPER OPERATION PRIOR TO FINAL TEST AND BALANCE.

MECHANICAL BUILDING CODES

THESE PLANS WERE PREPARED IN ACCORDANCE WITH THE 2018 INTERNATIONAL BUILDING CODE WITH GEORGIA STATE AMENDMENTS INCLUDING ALL APPLICABLE SECTIONS OF BUILDING, ENERGY CONSERVATION, EXISTING BUILDING, FIRE MECHANICAL, PLUMBING, AND FUEL GAS INCLUDING BUT NOT LIMITED TO THE FOLLOWING REFERENCED STANDARDS, ALL MECHANICAL WORK PERFORMED SHALL MEET THE APPLICABLE REQUIREMENTS OF THESE CODES AND REFERENCED STANDARDS

- INTERNATIONAL FIRE CODE (2015) AND NFPA 101 (LIFE SAFETY CODE)
- NFPA-70 (NATIONAL ELECTRIC CODE, 2017 WITH NC AMENDMENTS.)
- NFPA 90A (STANDARD FOR THE INSTALLATION OF AIR CONDITIONING AND VENTILATION, 2015 ED.)
- ASHRAE 62.1 (VENTILATION FOR ACCEPTABLE INDOOR AIR QUALITY, 2013 ED.)
- SMACNA/ANSI (HVAC DUCT CONSTRUCTION STANDARDS, METAL & FLEXIBLE, 2005 3RD ED.)
- SMACNA (FIBROUS GLASS DUCT CONSTRUCTION STANDARD, 2003 7TH ED.)
- NAIMA AH116 (FIBERGLASS DUCT CONSTRUCTION STANDARDS, 2009 ED.)
- MSS SP-58 (PIPE HANGERS AND SUPPORTS-MATERIALS DESIGN AND MANUFACTURE, SELECTION, APPLICATION AND INSTALLATION, 2009 ED.)

KPI ENGINEERING, INC.

PROFESSIONAL ENGINEERS
"No matter the Scope, KPI has YOU Covered"
 3203 QUEEN PALM DRIVE
 TAMPA, FLORIDA 33619
 PHONE (813) 241-6488
 FAX (813) 241-6498
 Board of Professional Engineers - License # PE005267



PANDA EXPRESS, INC.
1683 Walnut Grove Ave.
Rosemead, California
91770

Telephone: 626.799.9898
Facsimile: 626.372.8288

All ideas, designs, arrangement and plans indicated or represented by this drawing are the property of Panda Express Inc. and were created for use on this specific project. None of these ideas, designs, arrangements or plans may be used by or disclosed to any person, firm, or corporation without the written permission of Panda Express Inc.

REVISIONS:

[illegible]

ISSUE DATE:

CHECK SET	06-12-23
PERMIT/BID	06-16-23

DRAWN BY: BDG

PANDA PROJECT #: TBD

PANDA STORE #: TBD

ARCH PROJECT #: 22920

bdg
architects

P: 813-323-9233
FL LIC#AR-0014792
www.bdgfo.com

400 N. Ashley Dr.,
Suite 600
Tampa, FL 33602

Dean S Kenyon

DEAN S. KENYON, P.E.
GA LIC. # PE032813 EXP. 12/31/2024

PANDA EXPRESS

PANDA HOME SQUARE 2600
Monroe Pavillion, Highway 78
Monroe, GA 30655

M-000

MECHANICAL NOTES, SPECIFICATIONS & SCHEDULES

PRINTED 6/30/2023

-
- This mechanical floor plan for the 1st floor details the HVAC system. It includes a network of ducts (e.g., 10"x10", 14"x14", 24"x24") and piping (e.g., 10"Ø, 8"Ø) connecting various units. Key components include:
- Walk-in Freezer** and **Walk-in Cooler** in the upper left.
 - Men's Room** and **Women's Room** in the upper right.
 - Vestibules** and **Entrances** along the right side.
 - Dining Room** and **Bar** in the lower right.
 - Drive-Thru Station** and **S-Drain Dragon** in the lower left.
- The plan is annotated with numerous callouts for equipment (e.g., 300 A, 250 H, 150 C), duct/pipe sizes, and flow directions. A legend on the left side of the plan defines the symbols for different types of equipment and flow directions.

Scale: 1/4"=1'-0" M-100

- [illegible]

Scale: 1/4"=1'-0" M-100



PHONE: (714) 677-2963
EMAIL: reg83@captiveaire.com

EXHAUST HOODS ND-2/BD-2/SND-2 (CANADA) - CA PATENT 2520435 C.

HOOD NO	TAG	MODEL	MANUFACTURER	LENGTH	MAX COOKING TEMP	TYPE	APPLIANCE DUTY	DESIGN CFM/FT	TOTAL EXH CFM	EXHAUST PLENUM RISER(S)						TOTAL SUPPLY CFM	HOOD CONSTRUCTION	HOOD CONFIG		
										WIDTH		HEIGHT	DIA	CFM	VEL			SP	END TO END	ROW
										LENGTH										
1		4824 ND-2	CAPTIVEAIRE	12' 9"	600 DEG	I	HEAVY	259	3300		4'	18"	3300	1867	-1151'	0	430 SS WHERE EXPOSED	LEFT	ALONE	
2		4824 ND-2	CAPTIVEAIRE	11' 6"	600 DEG	I	HEAVY	261	3000		4'	18"	3000	1698	-0.960'	0	430 SS WHERE EXPOSED	RIGHT	ALONE	
3		226 MISC ACPSP-DONLY	CAPTIVEAIRE	11' 6"	300 DEG	I	N/A	0	0							2520	430 SS WHERE EXPOSED	ALONE	ALONE	
4		226 MISC ACPSP-DONLY	CAPTIVEAIRE	13' 3"	300 DEG	I	N/A	0	0							2520	430 SS WHERE EXPOSED	ALONE	ALONE	

HOOD NO	TAG	FILTER(S)				LIGHT(S)			UTILITY CABINET(S)				FIRE SYSTEM PIPING	HOOD HANGING WEIGHT		
		TYPE	QTY	HEIGHT	LENGTH	EFFICIENCY @ 7 MICRONS	QTY	TYPE	WIRE GUARD	LOCATION	SIZE	FIRE SYSTEM			ELECTRICAL	SWITCHES
												TYPE			SIZE	MODEL #
1		CAPRATE SDOO FILTER	9	20"	16"	85% SEE FILTER SPEC	6	L55 SERIES E26	NO	WALL MNT	12"x54"x24"		DCV-2111	1 LIGHT 1 FAN	NO	506 LBS
2		CAPRATE SDOO FILTER	8	20"	16"	85% SEE FILTER SPEC	6	L55 SERIES E26	NO						NO	467 LBS
3							0								NO	161 LBS
4							0								NO	176 LBS

HOOD NO	TAG	OPTION
1		LEFT END STANDOFF (FINISHED) 3' WIDE 48' LONG.
		RISER SENSOR INSTALL 6IN PLEN.
2		RIGHT END STANDOFF (FINISHED) 3' WIDE 48' LONG INSULATED.
		RISER SENSOR INSTALL 6IN PLEN.

HOOD NO	TAG	POS	LENGTH	WIDTH	HEIGHT	TYPE	RISER(S)				
							WIDTH	LENG	DIA	CFM	SP
3	Front	138"	10"	6"	AC			8"	236	0.135"	
					AC			8"	236	0.135"	
	Back	138"	12"	6"	MUA	10"	28"	1260	0.530"		
					MUA	10"	28"	1260	0.530"		
4	Front	159"	10"	6"	AC			8"	236	0.122"	
					AC			8"	236	0.122"	
	Back	159"	12"	6"	MUA	10"	28"	1260	0.502"		
					MUA	10"	28"	1260	0.502"		

UTILITY CABINET(S)							
HOOD NO	LOCATION	SIZE	FIRE SYSTEM		ELECTRICAL	SWITCHES	WEIGHT
			TYPE	SIZE	MODEL #	QUANTITY	
1	WALL MNT	12"x54"x24"			DCV-2111	1 LIGHT 1 FAN	140 LBS

DOUBLE WALL DUCT BY MECHANICAL
PLEASE USE CONTACT BELOW FOR PRICING

FOR QUESTIONS CALL THE
CAPTIVEAIRE
SOUTHERN CA NATIONAL ACCOUNTS OFFICE
3002 DOW AVENUE, SUITE 410
TUSTIN, CA 92780
TEL: 714-677-2963 EMAIL: REG83@CAPTIVEAIRE.COM



ASSEMBLY INSTRUCTIONS

**SUPPLY PLENUM
HANGING ANGLE
(HARDWARE BY INSTALLER)**

- 1/2" - 13 TP1
GRADE 5 OMMODUM
STEEL HEX NUTS.
- 1/2" GRADE 5
OMMODUM STEEL
FLAT WASHER.
- 1/2" - 13 TP1
GRADE 5 OMMODUM
STEEL ALL-THREAD.
- 1/2" - 13 TP1
GRADE 5 OMMODUM
STEEL HEX NUT.
- 1/2" GRADE 5
OMMODUM STEEL
FLAT WASHER.

**SUPPLY PLENUM
HANGING ANGLE
(WEIGHT BEARING
ANCHOR POINT FOR
SUPPLY PLENUM).**

- 1/2" GRADE 5
OMMODUM STEEL
FLAT WASHER.
- 1/2" - 13 TP1
GRADE 5 OMMODUM
STEEL HEX NUT.

ASSEMBLY INSTRUCTIONS

HANGING ANGLE MUST BE SUPPORTED WITH 1/2" - 13 TPI GRADE 5 (MINIMUM) ALL-THREAD. SANDWICH HANGING ANGLES AND CEILING ANCHOR POINTS WITH 1/2" GRADE 5 (MINIMUM) STEEL FLAT WASHERS AND 1/2" - 13 TPI GRADE 5 (MINIMUM) HEX NUTS AS SHOWN. MUST USE DOUBLED HEX NUT CONFIGURATION ABOVE CEILING ANCHORS. SINGLE HEX NUT BENEATH HANGING ANGLE IS ACCEPTABLE FOR PSP HANGING ANGLES. MAINTAIN 1/4" OF EXPOSED THREADS BENEATH BOTTOM HEX NUT. TORQUE ALL HEX NUTS TO 57 FT-LBS.



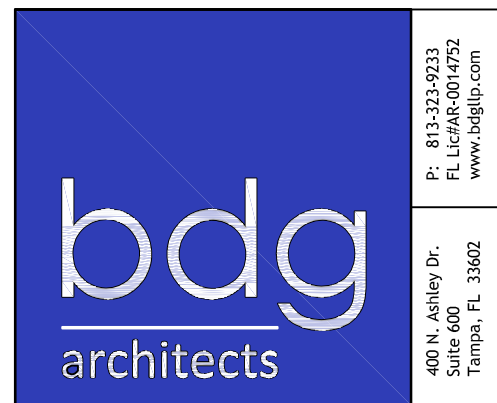
All ideas, designs, arrangement and plans indicated or represented by this drawing are the property of Panda Express Inc. and were created for use on this specific project. None of these ideas, designs, arrangements or plans may be used by or disclosed to any person, firm, or corporation without the written permission of Panda Express Inc.

REVISIONS:

[illegible]

DRAWN BY: BDG

PANDA PROJECT #:	TBD
PANDA STORE #:	TBD
ARCH PROJECT #:	229201



Dean S Kenyon

DEAN S. KENYON, P.E.
GA LIC. # PE032813 EXP. 12/31/2024

PANDA EXPRESS

PANDA HOME SQUARE 2600
Monroe Pavillion, Highway 78
Monroe, GA 30655

M-400

HOOD DETAIL PLAN

PANDA HOME SQUARE 2600 R2

PANDA HOME SQUARE 2600 R2



REVISIONS	
DESCRIPTION	DATE:
△	
△	
△	
△	
△	



Southern CA National Accounts

3002 Dow Ave., Suite 410, Tustin, CA. 92780 PHONE: (714) 677-2963 EMAIL: reg83@captiveaire.com

www.captiveaire.com



Panda Express - Monroe GA
MONROE, GA, 30655

DATE: 4/21/2023

DWG.#:
5966108

DRAWN BY: AH-83

SCALE:
3/4" = 1'-0"

MASTER DRAWING

SHEET NO.
3

KPI ENGINEERING, INC

PROFESSIONAL ENGINEERS

"No matter the Scope, KPI has YOU Covered"

3203 QUEEN PALM DRIVE
TAMPA, FLORIDA 33619
PHONE (813) 241-6488
FAX (813) 241-6498

Board of Professional Engineers - License # PE005267



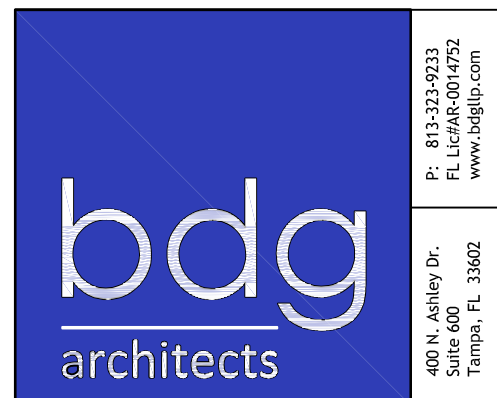
All ideas, designs, arrangement and plans indicated or represented by this drawing are the property of Panda Express Inc. and were created for use on this specific project. None of these ideas, designs, arrangements or plans may be used by or disclosed to any person, firm, or corporation without the written permission of Panda Express Inc.

REVISIONS:

[illegible]

DRAWN BY: BDG

PANDA PROJECT #:	TBD
PANDA STORE #:	TBD
ARCH PROJECT #:	229201



Dean S Kenyon

DEAN S. KENYON, P.E.
GA LIC. # PE032813 EXP. 12/31/2024

PANDA EXPRESS

PANDA HOME SQUARE 2600
Monroe Pavillion, Highway 78
Monroe, GA 30655

M-402

HOOD DETAIL PLAN

PANDA HOME SQUARE 2600 R2

FAN UNIT NO	TAG	QTY	FAN UNIT MODEL #	MANUFACTURER	CFM	ESP	RPM	MOTOR ENCL	HP	BHP	PHASE	VOLT	FLA	DISCHARGE VELOCITY	WEIGHT (LBS)	SDNES
1	FRYERS	1	DUI80HFA	CAPTIVEAIRE	3300	1.515	1363	ODP,PREMIUM	3.000	1.8190	3	208	9.5	762 FPM	190	21.6
2	RICE	1	DUI80HFA	CAPTIVEAIRE	3000	1.262	1241	ODP,PREMIUM	3.000	1.3750	3	208	9.5	693 FPM	190	18.4
3		1	DR12HFA	CAPTIVEAIRE	450	0.250	1220	TEAO-ECM	0.250	0.0810	1	115	2.9		50	5.4

FAN UNIT NO	TAG	FAN UNIT MODEL #	CONDENSER NO	TONNAGE	VOLTAGE	PHASE	FREQUENCY	MCA	RLA	MAX FUSE SIZE	MIN WIRE SIZE	SEER
4		A3-D.500-24D-MPU	1	5	208-230	3 PHASE	60 HZ	21.4 AMPS	17.4 AMPS	30 AMPS	10 AWG	14
			2	5	208-230	3 PHASE	60 HZ	21.4 AMPS	17.4 AMPS	30 AMPS	10 AWG	14

FAN UNIT NO	TAG	QTY	FAN UNIT MODEL #	BLDWR	HOUSING	MIN CFM	DESIGN CFM	ESP	RPM	MOTOR ENCL	HP	BHP	PHASE	VOLT	FLA	MCA	MDCP	WEIGHT (LBS)	SDNES
4		1	A3-D500-24D-MPU	24MF-3-MOD	A3-D500	3600	5540	0.900	1401	ODP,PREMIUM	10.000	5.3280	3	208	27.0	35A	60A	1916	12.9

[illegible]

FAN UNIT NO	TAG	INPUT BTUs	OUTPUT BTUs	TEMP RISE	REQUIRED INPUT GAS PRESSURE	GAS TYPE	BURNER EFFICIENCY(%)
4		271739	250000	41°F	7 IN. W.C. - 14 IN. W.C.	NATURAL	92

FAN UNIT NO	TAG	QTY	DESCRIPTION
1	FRYERS	1	GREASE BOX
		1	UPBLAST FAN WHEEL ACCESS PORT
		1	FAN BASE CERAMIC SEAL - INSTALLED AT PLANT - FOR GREASE DUCTS
		1	2 YEAR PARTS WARRANTY
2	RICE	1	GREASE BOX
		1	UPBLAST FAN WHEEL ACCESS PORT
		1	FAN BASE CERAMIC SEAL - INSTALLED AT PLANT - FOR GREASE DUCTS
		1	2 YEAR PARTS WARRANTY
3		1	ECM WIRING PACKAGE - MANUAL DR 0-10VDC REFERENCE SPEED CONTROL -RTC- (TELCD MOTOR), CCW ROTATION
		1	1 12-BDD DAMPER
		1	2 YEAR PARTS WARRANTY
4		1	INLET PRESSURE GAUGE, 0-35"
		1	MANIFOLD PRESSURE GAUGE, -5 TO 15" WC
		1	MOTORIZED BACKDRAFT DAMPER FOR A3-D HOUSING - MEETS AMCA CLASS 1A RATING
		1	10 TON 2 CIRCUIT (5/5) MODULAR PACKAGED COOLING OPTION FOR SIZE 3 DF/EH MUA (3,600 TO 6,000 CFM), 208V/230V, 3 PHASE, COOLING THERMOSTAT OR PROGRAMMABLE STAT REQUIRED FOR PROPER OPERATION
		1	DOWNTURN PLENUM FOR SIZE 3 DX COIL MODULE
		1	SHIP CONDENSERS LOOSE - TWO CONDENSERS, THREE PHASE - CONDENSER DISCONNECTS SHIPPED LOOSE. ALL PIPING AND WIRING BETWEEN INDOOR AND OUTDOOR UNITS BY OTHERS
		1	LDW FIRE START
		1	BUTTERFLY MOD VALVE OPTION FOR MOD SIZE 3 (1" MOD VALVE)
		1	UNIT MOUNTED VFD FOR USE WITH ECPM03
		1	2 YEAR PARTS WARRANTY

FAN UNIT NO	TAG	EXHAUST			SUPPLY			
		GREASE CUP	GRAVITY DAMPER	WALL MOUNT	SIDE DISCHARGE	GRAVITY DAMPER	MOTORIZED DAMPER	WALL MOUNT
1	FRYERS	YES						
2	RICE	YES						
3			YES					
4							YES	

NO	DN FAN	TAG	WEIGHT	ITEM	SIZE	
1	# 1	FRYERS	34 LBS	CURB	26.500"W X 26.500"L X 30.000"H ALONG LENGTH, RIGHT	VENTED HINGED.
2	# 2	RICE	34 LBS	CURB	26.500"W X 26.500"L X 30.000"H ALONG LENGTH, RIGHT	VENTED HINGED.
3	# 3		16 LBS	CURB	17.500"W X 17.500"L X 12.000"H ALONG LENGTH, RIGHT.	
4	# 4		114 LBS	CURB	35.000"W X 84.000"L X 20.000"H ALONG WIDTH, RIGHT	INSULATED.
	# 4			RAIL	6.000"W X 35.000"L X 20.000"H RIGHT.	

Technical drawing of the Honda 2000 generator showing dimensions and components. The drawing includes the following dimensions and labels:

- Top width: 37 3/8"
- Left height: 33 3/4"
- Right height: 22 5/8"
- Base width: 16 1/2"
- Base depth: 26"
- Overall depth: 28"
- Label: GREASE DRAIN.

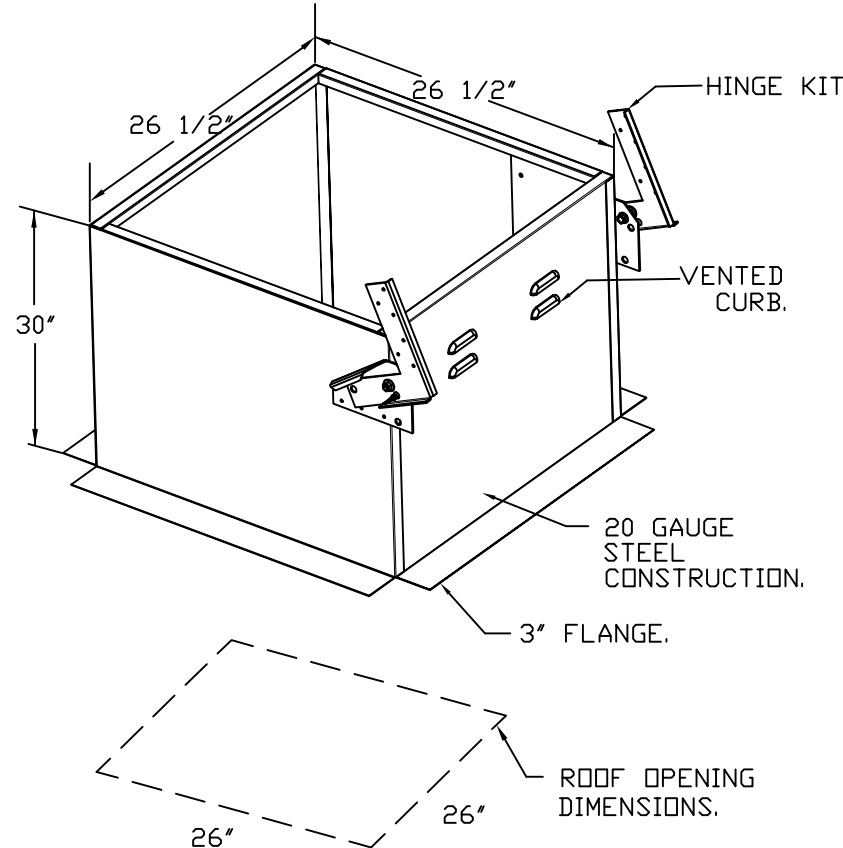
TOP VIEW

- DIRECT DRIVE CONSTRUCTION (NO BELTS/PULLEYS).
- ROOF MOUNTED FANS.
- RESTAURANT MODEL.
- UL705 AND UL762 AND ULC-S645
- VARIABLE SPEED CONTROL.
- INTERNAL WIRING.
- THERMAL OVERLOAD PROTECTION (SINGLE PHASE).
- HIGH HEAT OPERATION 300°F (149°C).
- GREASE CLASSIFICATION TESTING.
- NEMA 3R SAFETY DISCONNECT SWITCH.

EXHAUST FAN MUST OPERATE CONTINUOUSLY WHILE EXHAUSTING AIR AT 300°F (149°C) UNTIL ALL FAN PARTS HAVE REACHED THERMAL EQUILIBRIUM, AND WITHOUT ANY DETERIORATING EFFECTS TO THE FAN WHICH WOULD CAUSE UNSAFE OPERATION.

EXHAUST FAN MUST OPERATE CONTINUOUSLY WHILE EXHAUSTING BURNING GREASE VAPORS AT 600°F (316°C) FOR A PERIOD OF 15 MINUTES WITHOUT THE FAN BECOMING DAMAGED TO ANY EXTENT THAT COULD CAUSE AN UNSAFE CONDITION.

- GREASE BOX.
- UPBLAST FAN WHEEL ACCESS PORT.
- FAN BASE CERAMIC SEAL - INSTALLED
- AT PLANT - FOR GREASE DUCTS.
- 2 YEAR PARTS WARRANTY.



NOTE: UNLESS OTHERWISE STATED, PANDA RESTAURANT GROUP SHALL PROVIDE ALL EQUIPMENT ON THE FOLLOWING CAPTIVEAIRE SHEETS, INCLUDING: HODDS, FIRE SYTEM, EXHAUST FANS, SUPPLY FAN, BATHROOM FAN AND ELECTRICAL INTERLOCK PACKAGE

DOUBLE WALL DUCT BY MECHANICAL
PLEASE USE CONTACT BELOW FOR PRICING

ANSUL GAS VALVE:

THE ANSUL GAS VALVE IS PROVIDED BY CAPTIVEAIRE SYSTEMS. CONTACT OUR OFFICE WITH THE VALVE SIZE 3 DAYS IN ADVANCE OF WHEN IT IS NEEDED ON SITE.

FOR QUESTIONS CALL THE
CAPTIVEAIRE
SOUTHERN CA NATIONAL ACCOUNTS OFFICE
3002 DOW AVENUE, SUITE 410
TUSTIN, CA 92780
TEL: 714-677-2963 EMAIL: REG838CAPTIVEAIRE.COM

REVISIONS	
DESCRIPTION	DATE:
△	
△	
△	
△	
△	



Southern CA National Accounts

3002 Dow Ave., Suite 410, Tustin, CA, 92780 PHONE: (714) 677-2963 EMAIL: reg3@capitalline.com

www.capitalline.com



Panda Express - Monroe GA
MONROE, GA, 30655

DATE: 4/21/2023

DWG.#:

DRAWN BY AH-83

SCALE:
4" = 1'-0"

MASTER DRAWING

SHEET NO.
4

KPI ENGINEERING, INC.

PROFESSIONAL ENGINEERS

"No matter the Scope, KPI has YOU Covered"

3203 QUEEN PALM DRIVE
TAMPA, FLORIDA 33619
PHONE (813) 241-6488
FAX (813) 241-6498

Board of Professional Engineers - License # PEF005267



PANDA EXPRESS, INC.
1683 Walnut Grove Ave.
Rosemead, California
91770
Telephone: 626.799.9898
Facsimile: 626.372.8288

All ideas, designs, arrangement and plans indicated or represented by this drawing are the property of Panda Express Inc. and were created for use on this specific project. None of these ideas, designs, arrangements or plans may be used by or disclosed to any person, firm, or corporation without the written permission of Panda Express Inc.

REVISIONS:

ISSUE DATE:

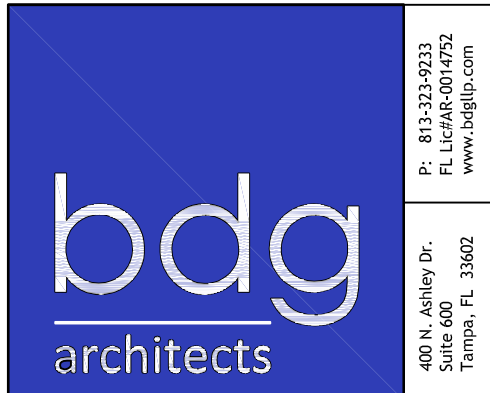
CHECK SET	06-12-23
PERMIT/BID	06-16-23

DRAWN BY: BDG

PANDA PROJECT #: TBD

PANDA STORE #: TBD

ARCH PROJECT #: 229201



Dean S Kenyon

DEAN S. KENYON, P.E.
GA LIC. # PE032813 EXP. 12/31/2024

PANDA EXPRESS

PANDA HOME SQUARE 2600
Monroe Pavillion, Highway 78
Monroe, GA 30655

M-403

HOOD DETAIL PLAN

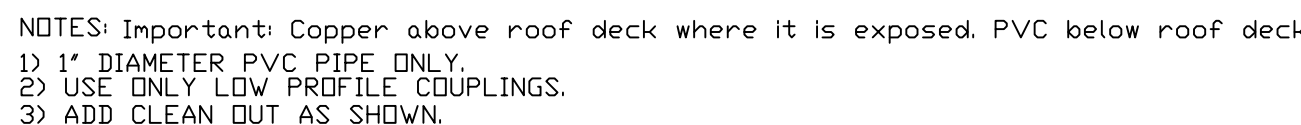
PANDA HOME SQUARE 2600 R2

PANDA HOME SQUARE 2600 R2

***NOTE: CONDENSERS SHIPPED LOOSE FOR REMOTE MOUNTING. ALL WIRING AND PIPING BETWEEN INDOOR AND OUTDOOR UNIT TO BE COMPLETED BY OTHERS.

WINTER TEMPERATURE = 20°F. TEMP. RISE = 41°F.
BTUs CALCULATED OFF ACTUAL AIR DENSITY.
OUTPUT BTUs AT ALTITUDE OF 0.0 FT. = 249188.
INPUT BTUs AT ALTITUDE OF 0.0 FT. = 270856.

3002 DOW AVENUE, SUITE 410
TUSTIN, CA 92780
TEL: 714-677-2963 EMAIL: REG83@CAPTIVEAIRE.COM



DIRECT FIRED BURNER SHAFT SPECIFICATIONS: SELF-ADJUSTING PROFILE
DIRECT FIRED BURNERS SHALL HAVE PATENTED US PATENT NO. 4969893(B). SELF-ADJUSTING PROFILE
DIRECT FIRED BURNERS SHALL BE DESIGNED TO OPERATE AT PRESSURES DOWN TO 10 INCHES W.G. PROFILE
DESIGN SHALL ALLOW BURNERS TO ACHIEVE CLEAN COMBUSTION BY LIMITING BY-PRODUCT LEVELS TO A
MAXIMUM OF 10% OF THE DESIGN FUEL FLOW. BURNERS SHALL BE DESIGNED TO OPERATE AT 10 INCHES W.G.
UNITS SHALL BE CONFIGURED WITH THE BLOWER MOUNTED DOWNSTREAM OF THE BURNER. THIS ARRANGEMENT
WILL PREVENT THE BURNER FROM CLOGGING AND ALLOW FOR EASY MAINTENANCE.

SPRING-LOADED BURNER PROFILE: BURNERS ARE ENGINEERED TO AUTOMATICALLY REACT TO THE VARIATION OF
AIR FLOW AND PRESSURE. THERE SHALL BE NO MOVING PARTS OR MECHANICAL ADJUSTMENTS REQUIRED TO
OPERATE WITH THIS FEATURE. ALL OF UNITS ARE DESIGNED FOR SECOND CONTROL VENTILATION (SCV) REQUIREMENTS.

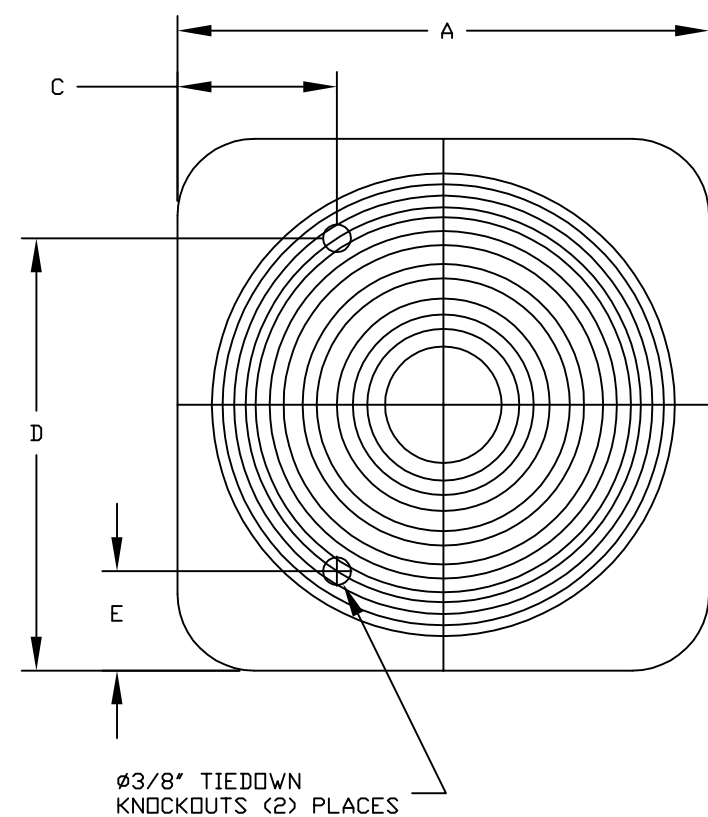
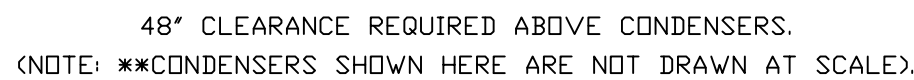
GENERAL CONSTRUCTION:
ALL PROFILE PLATE ASSEMBLIES SHALL BE INCLUDED IN THE IN UNITS ETC LISTING AND COMPLY WITH CO
ASTM A213 GRADE 304 AND CSA 37 (NON-POLYMERIZED OF HEATERS) AND ANSI Z39.1
(REGULATING OF HEATERS).

GENERAL CONSTRUCTION:
-PROFILE PLATE SHALL BE FORMED FROM 60 GALVANIZED STEEL.
-PROFILE PLATE SHALL VARY IN SIZE PER UNIT.
-PROFILE PLATE SHALL BE MADE TO ACHIEVE SAME PLANE AS THE DISCHARGE OF THE BURNER.
-DESIGN SHALL INCORPORATE PROPERLY TORQUED, PERMANENTLY MOUNTED SPRING HINGES.

SUCTION LINE

UNIT DIMENSIONS						CONNECTION SIZES		NOMINAL TONNAGE	
MODEL	WEIGHT	A	B	C	D	E	SUCTION		LIQUID
24ABB360	190 LBS	31-3/16	25-1/2	9-1/8	24-11/16	6-9/16	7/8	3/8	5

MODEL	V-PH	RLA	MCA	FUSE SIZE
24ABB360	208/230-3	16.0	21.4	30



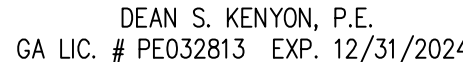
33002 Dow Ave., Suite 410, Tustin, CA, 92780 PHONE: (714) 677-2963 EMAIL: reg83@captiveaire.com

Panda Express - Monroe GA
MONROE, GA, 30655

MASTER DRAWING

SHEET NO.
6

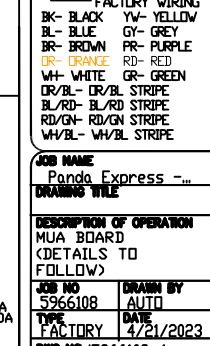
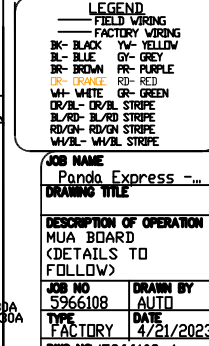
PROFESSIONAL ENGINEERS
"No matter the Scope, KPI has YOU Covered"
 3203 QUEEN PALM DRIVE
 TAMPA, FLORIDA 33619
 PHONE (813) 241-6488
 FAX (813) 241-6498
 Board of Professional Engineers - License # PEF005267



PANDA HOME SQUARE 2600
Monroe Pavillion, Highway 78
Monroe, GA 30655

HOOD DETAIL PLAN

PANDA HOME SQUARE 2600 R2



CAPTIVE

FOR QUESTIONS CALL THE
CAPTIVEAIRE
SOUTHERN CA NATIONAL ACCOUNTS OFFICE
3002 DDW AVENUE, SUITE 410
TUSTIN, CA 92780
TEL: 714-677-2963 EMAIL: REG838CAPTIVEAIRE.COM

KPI ENGINEERING, INC.
PROFESSIONAL ENGINEERS
"No matter the Scope, KPI has YOU Covered"
3203 QUEEN PALM DRIVE
TAMPA, FLORIDA 33619
PHONE (813) 241-6488
FAX (813) 241-6498



883 Walnut Grove Ave.
Rosemead, California
91770
Telephone: 626.799.9899
Facsimile: 626.372.8288

All ideas, designs, arrangements and plans indicated or represented by this drawing are the property of Panda Express Inc. and were created for use on this specific promotion. None of these ideas, designs, arrangements or plans may be used by or disclosed to any person, firm, or corporation without the written permission of Panda Express Inc.

REVISIONS:

ISSUE DATE:		
CHECK SET		06-12-
PERMIT/BID		06-16-

ISSUE DATE:

DRAWN BY: BDG

PANDA PROJECT #: TBD

PANDA STORE #: TBD

ARCH PROJECT #: 229201



Dean S Kenyor

DEAN S. KENYON, P.E.
GA LIC # PF032813 EXP 12/31/20

PANDA EXPRESS

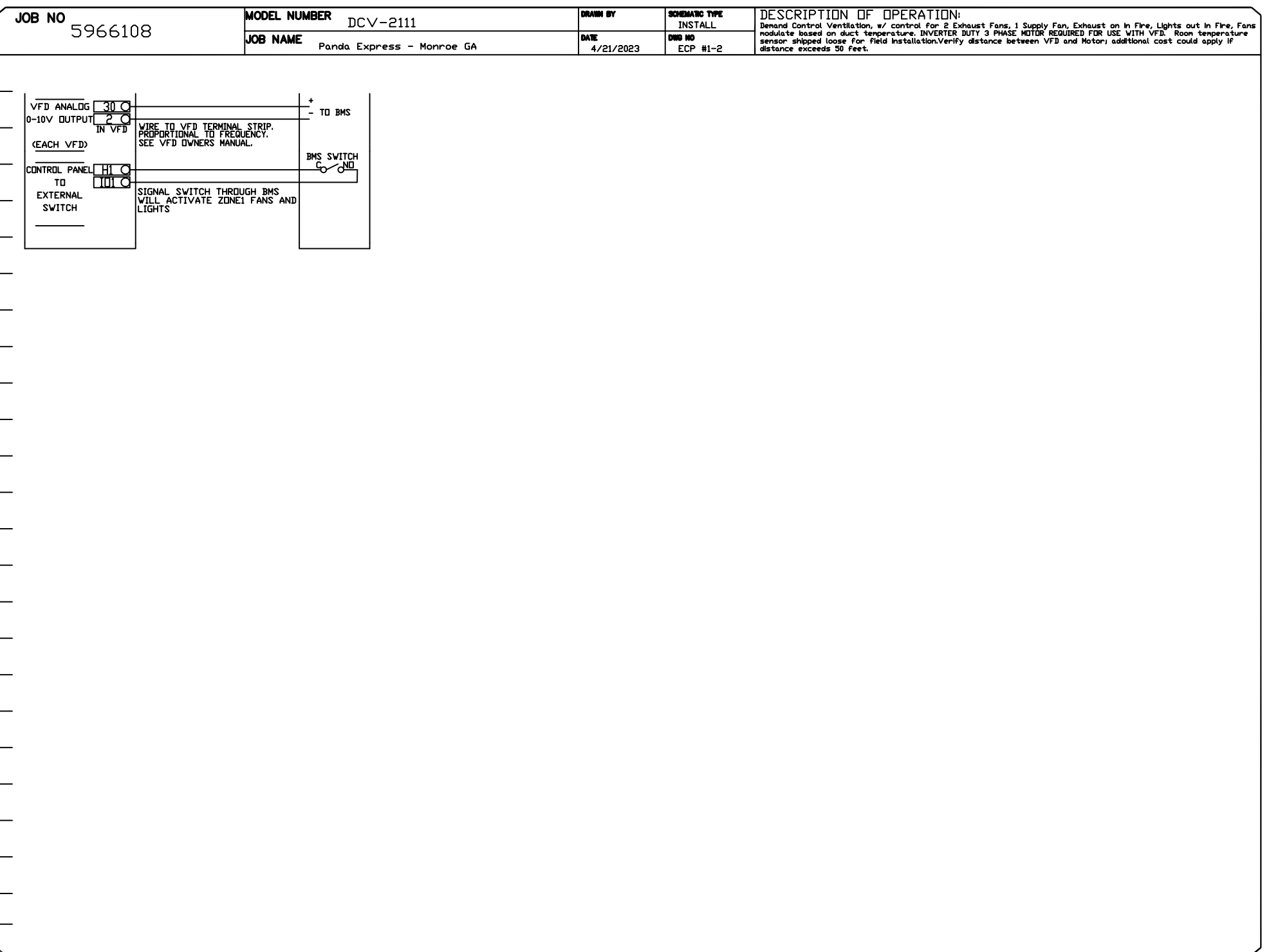
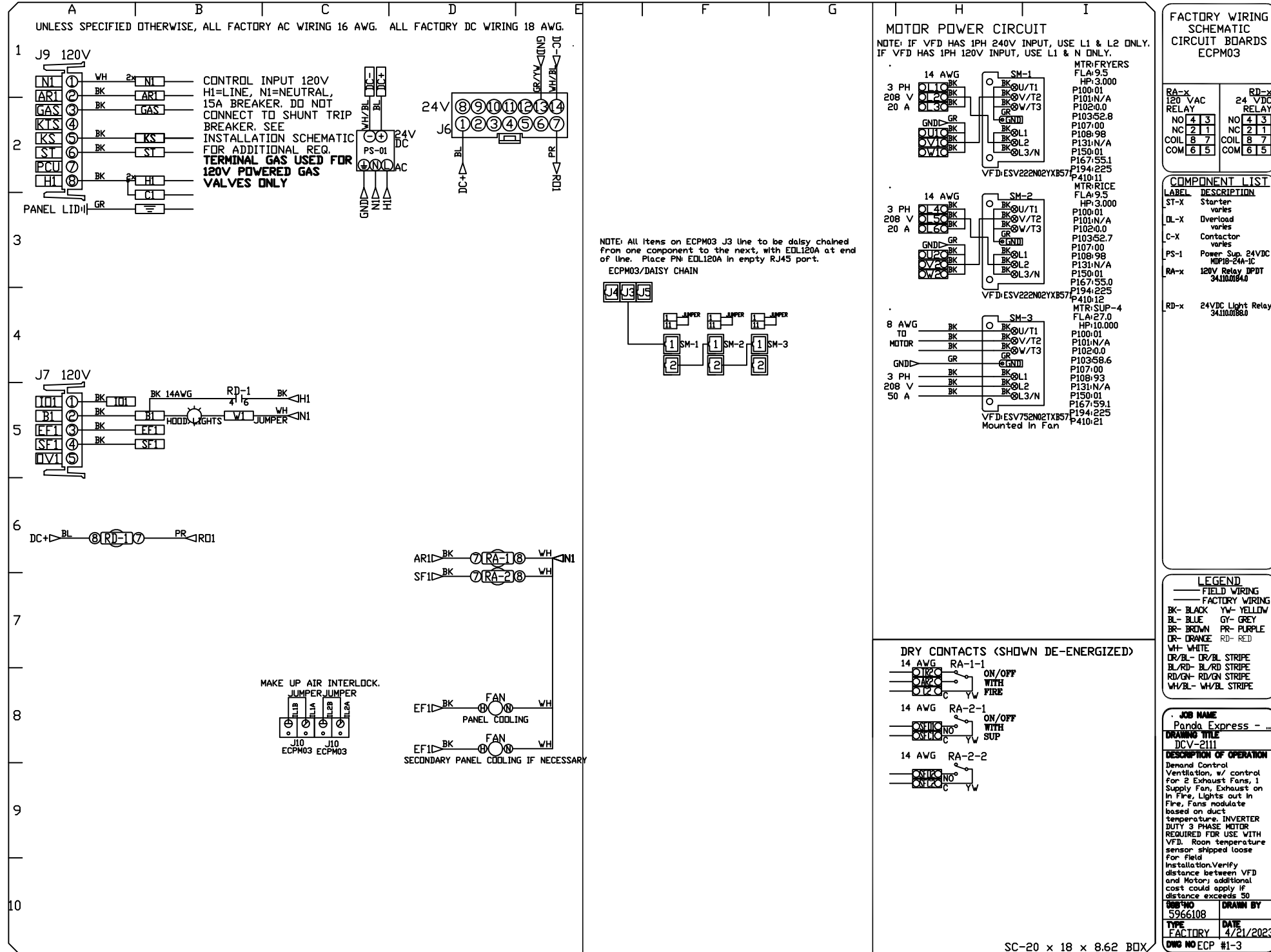
PANDA HOME SQUARE 260
Monroe Pavillion, Highway 7
Monroe, GA 30655

M-406

HOOD DETAIL PLAN

PANDA HOME SQUARE 2600 R2

NO	TAG	PACKAGE #	LOCATION	SWITCHES		OPTION	FANS CONTROLLED							
				LOCATION	QUANTITY		FAN TAG	TYPE	#	HP	VOLTS	FLA		
1		DCV-2111	WALL UTILITY CABINET LEFT	SHIP LOOSE W/ PREWIRE	1 LIGHT 1 FAN	SMART CONTROLS DCV								



FOR QUESTIONS CALL THE
CAPTIVEAIRE
SOUTHERN CA NATIONAL ACCOUNTS OFFICE
3002 DOW AVENUE, SUITE 410
TUSTIN, CA 92780
TEL: 714-677-2963 EMAIL: REG83@CAPTIVEAIRE.COM

		CAPTIVE		Panda Express - Monroe GA MONROE, GA, 30655		<div style="float: right;"> </div> <p>Southern CA National Accounts www.captiveheating.com</p>	
REVISIONS				DATE:			
△							
△							
△							
△							
△							
DATE: 4/21/2023 DWG.#: 5966108 DRAWN BY: AH-83 SCALE: 3/4" = 1'-0" MASTER DRAWING							
SHEET NO. 8							



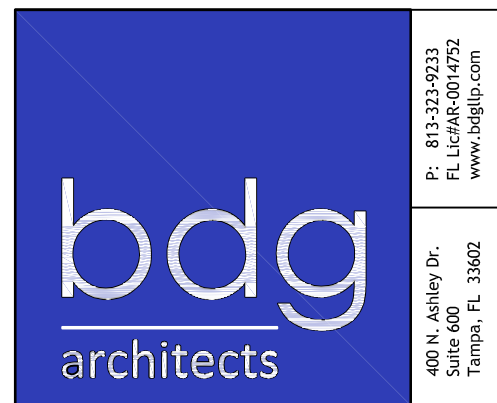
All ideas, designs, arrangement and plans indicated or represented by this drawing are the property of Panda Express Inc. and were created for use on this specific project. None of these ideas, designs, arrangements or plans may be used by or disclosed to any person, firm, or corporation without the written permission of Panda Express Inc.

REVISIONS:

ISSUE DATE:	
CHECK SET	06-12-2
PERMIT/BID	06-16-2

DRAWN BY: BDG

PANDA PROJECT #:	TBD
PANDA STORE #:	TBD
ARCH PROJECT #:	229201



Dean S Kenyon

DEAN S. KENYON, P.E.
GA LIC. # PE032813 EXP. 12/31/2024

PANDA EXPRESS

PANDA HOME SQUARE 2600
Monroe Pavillion, Highway 78
Monroe, GA 30655

HOOD DETAIL PLAN

PANDA HOME SQUARE 2600 R2

THESE DRAWINGS AND PLANS, AS
MODIFIED FOR ANY PURPOSE
AND RESULT IN THE FULL AND
CONTRACTOR IS RESPONSIBLE

DUCTWORK #1 PARTS - JOB#5966108 DOUBLE WALL

TAG	PART #	CFM	GPM	ZONE	COVEREDBY	SP	WEIGHT	VELOCITY	QTY	DESCRIPTION
P1	DW1829DWLT-2R-S	3300				-0.009	50.46	1867.42	1	DOUBLE WALL DUCT - 18" INNER DUCT, 29' LONG - 2 LAYERS REDUCED CLEARANCE - 22" STAINLESS STEEL OUTER SHELL.
P2	DW1847DWAJD-2R-S	3300				-0.008	107.98	1867.42	1	DOUBLE WALL ADJUSTABLE DUCT - 18" INNER DUCT - 2 LAYERS REDUCED CLEARANCE - 22" STAINLESS STEEL OUTER SHELL. MIN LENGTH = 11' / MAX LENGTH = 48.5' / ADJUSTMENT = 30.5' / ADJUSTABLE SECTION MAY NEED TO BE CUT. INCLUDES SINGLE AND DOUBLE WALL CLAMPS.
P3	DW1890DWASY-2R-S	3300				-0.109	45.59	1867.42	1	DOUBLE WALL DUCT - 18" INNER 90 DUCT - 2 LAYERS REDUCED CLEARANCE - 22" STAINLESS STEEL OUTER SHELL.
P4	DW1801DWOFFSETASY-2R-S	3300				-0.002	14.66	1867.42	1	DOUBLE WALL DUCT - 18" INNER DUCT RISER & 1 DEGREE OFFSET - 2 LAYERS REDUCED CLEARANCE - 22" STAINLESS STEEL OUTER SHELL.
P5	DW1827DWAJD-2R-S	3300				-0.006	62.85	1867.42	1	DOUBLE WALL ADJUSTABLE DUCT - 18" INNER DUCT - 2 LAYERS REDUCED CLEARANCE - 22" STAINLESS STEEL OUTER SHELL. MIN LENGTH = 11' / MAX LENGTH = 24.5' / ADJUSTMENT = 13.5' / ADJUSTABLE SECTION MAY NEED TO BE CUT. INCLUDES SINGLE AND DOUBLE WALL 'V' CLAMPS.
P6	DW2226SADKIT						8.80		1	DUCT - HORIZONTAL SADDLE SUPPORT KIT, USED WITH 22" OD - INCLUDES UNI-STRUT CUT TO LENGTH, DW2226SAD, & HARDWARE BAG 4.
P7	DW1801DWOFFSETASY-2R-S	3300				-0.002	14.66	1867.42	1	DOUBLE WALL DUCT - 18" INNER DUCT RISER & 1 DEGREE OFFSET - 2 LAYERS REDUCED CLEARANCE - 22" STAINLESS STEEL OUTER SHELL.
P8 ASSEMBLED W/P9	DW180DWTEASY-2R-S	3300		1		-0.218	55.68	1867.42	1	DOUBLE WALL DUCT - 18" INNER TEE DUCT - 2 LAYERS REDUCED CLEARANCE - 22" STAINLESS STEEL OUTER SHELL.
P9 ASSEMBLED W/P8 Ø=S	DW18DWACDDORCOV-2R-S						26.16		1	DOUBLE WALL DUCT - 18" INNER ACCESS DOOR & 22" ACCESS DOOR COVER WITH CLAMPS - 2 LAYERS REDUCED CLEARANCE - 22" STAINLESS STEEL OUTER SHELL.
P10 ASSEMBLED W/P11	DW1835DWLTP-2R-S	3300				-0.011	58.74	1867.42	1	DOUBLE WALL DUCT - 18" INNER DUCT, 35' LONG - 2 LAYERS REDUCED CLEARANCE - 22" STAINLESS STEEL OUTER SHELL - USED WITH TRANSITION PLATES
P11 ASSEMBLED W/P10 SYSTEM AT P11	DW2618PTDBEX	3300					9.00	1867.42	1	DUCT TO CURB TRANSITION 3/4" DOWN TURN, 26 1/2" CURB TO 18" DUCT, 16 GA ALUMINIZED. USED ON NCA16FA / NCA16HPFA & NCA18FA / NCA18HPFA. TRANSITION PLATE OD IS 27.00" DESIGNED FOR USE WITH EXHAUST FAN. NON-STANDARD PART.
						-1.516	0.00			
	3M-2000PLUS						0.80		3	DUCT - 3M FIRE BARRIER 2000 PLUS SILICONE - USED AS SEALANT TO SEAL DUCT JOINTS.
	DW18DWCLASY-2R-S						8.70		3	DUCT - 18" DUCT - 22" DOUBLE 'V'V' CLAMP - 2R INSULATION & SINGLE 'V'V' CLAMP INCLUDED - REDUCED CLEARANCE.
TOTAL WEIGHT							483.08			

DOUBLE WALL FACTORY BUILT DUCTWORK

- ALL DUCTWORK IS REQUIRED TO BE INSTALLED WITH THE MAXIMUM SUPPORT SPACING LISTED BELOW.
- FOR A COMPLETE LIST OF APPROVED SUPPORT METHODS, SEE THE ENTIRE INSTALLATION AND OPERATION MANUAL.
- DUCTWORK SHALL SLOPE NOT LESS THAN 1/16" PER LINEAR FOOT TOWARDS THE HOOD OR AN OPERATED GREASE COLLECTION RESERVOIR.
- WHERE HORIZONTAL DUCTS EXCEED 75 FEET IN LENGTH, THE SLOPE SHALL NOT BE LESS THAN 3/16" PER LINEAR FOOT.

HORIZONTAL	
DUCT DIAMETER	SUPPORT SPACING (FT)
5'	7'
6'	7'
7'	7'
8'	7'
10'	7'
12'	7'
14'	7'
16'	7'
18'	5'
20'	5'
22'	5'
24'	5'
26'	5'
28'	5'
30'	5'
32'	5'
34'	5'
36'	5'

VERTICAL			
TYPE	WALL SUPPORT (FT)	CURB SUPPORT (FT)	FLOOR SUPPORT (FT)
2R & 2R HT (5'-16")	20'	24'	24'
2R (18")	18'	24'	24'
3R & 3Z (5'-24")	10'	24'	24'
3Z (26" -36")	10'	20'	20'

DO NOT LEAK TEST USING SMOKE BOMBS CONTAINING
CHLORINES/CHLORIDES. CONSULT WITH CAPTIVEAIRE
FOR PROPER LEAK TESTING METHODS.

NOTE: UNLESS OTHERWISE STATED, PANDA RESTAURANT GROUP SHALL PROVIDE ALL EQUIPMENT ON THE FOLLOWING CAPTIVEAIRE SHEETS, INCLUDING: HOODS, FIRE SYTEM, EXHAUST FANS, SUPPLY FAN, BATHROOM FAN AND ELECTRICAL INTERLOCK PACKAGE

DOUBLE WALL DUCT BY MECHANICAL
PLEASE USE CONTACT BELOW FOR PRICING

ANSUL GAS VALVE:


THE ANSUL GAS VALVE IS PROVIDED BY CAPTIVEAIRE SYSTEMS. CONTACT OUR OFFICE WITH THE VALVE SIZE 3 DAYS IN ADVANCE WHEN IT IS NEEDED ON SITE.

FOR QUESTIONS CALL THE
CAPTIVEAIRE
SOUTHERN CA NATIONAL ACCOUNTS OFFICE
3002 DOW AVENUE, SUITE 410
TUSTIN, CA 92780
TEL: 714-677-2963 EMAIL: REG83@CAPTIVEAIRE.COM

KPI ENGINEERING, INC.

PROFESSIONAL ENGINEERS
"No matter the Scope, KPI has YOU Covered"
 3203 QUEEN PALM DRIVE
 TAMPA, FLORIDA 33619
 PHONE (813) 241-6488
 FAX (813) 241-6498
 Board of Professional Engineers - License # PEF005267

REVISIONS	
DESCRIPTION	DATE:
Δ	
Δ	
Δ	
Δ	
Δ	



 www.captivate.com

CAPTIVATE

Southern CA National Accounts

3002 Dow Ave., Suite 410, Tustin, CA 92780 PHONE: (714) 677-2963 EMAIL: reg@3@captive.com

Panda Express - Monroe GA

MONROE, GA, 30655

DATE: 4/21/2023

DWG.#:
5966108

DRAWN BY: AH-83

SCALE:
3/4" = 1'-0"

MASTER DRAWING

SHEET NO.

9



PANDA EXPRESS, INC.
1683 Walnut Grove Ave.
Rosemead, California
91770

Telephone: 626.799.9898
Facsimile: 626.372.8288

All ideas, designs, arrangement and plans indicated or represented by this drawing are the property of Panda Express Inc. and were created for use on this specific project. None of these ideas, designs, arrangements or plans may be used by or disclosed to any person, firm, or corporation without the written permission of Panda Express Inc.

REVISIONS:

[illegible]

ISSUE DATE:

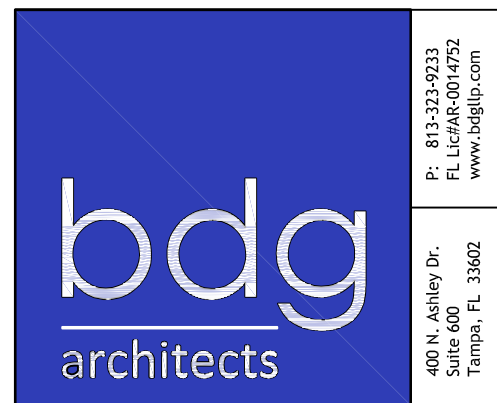
CHECK SET	06-12-2016
PERMIT/BID	06-16-2016

DRAWN BY: BDG

PANDA PROJECT #: TBD

PANDA STORE #: TBD

ARCH PROJECT #: 229201



Dean S Kenyon

DEAN S. KENYON, P.E.
GA LIC. # PE032813 EXP. 12/31/2024

PANDA EXPRESS

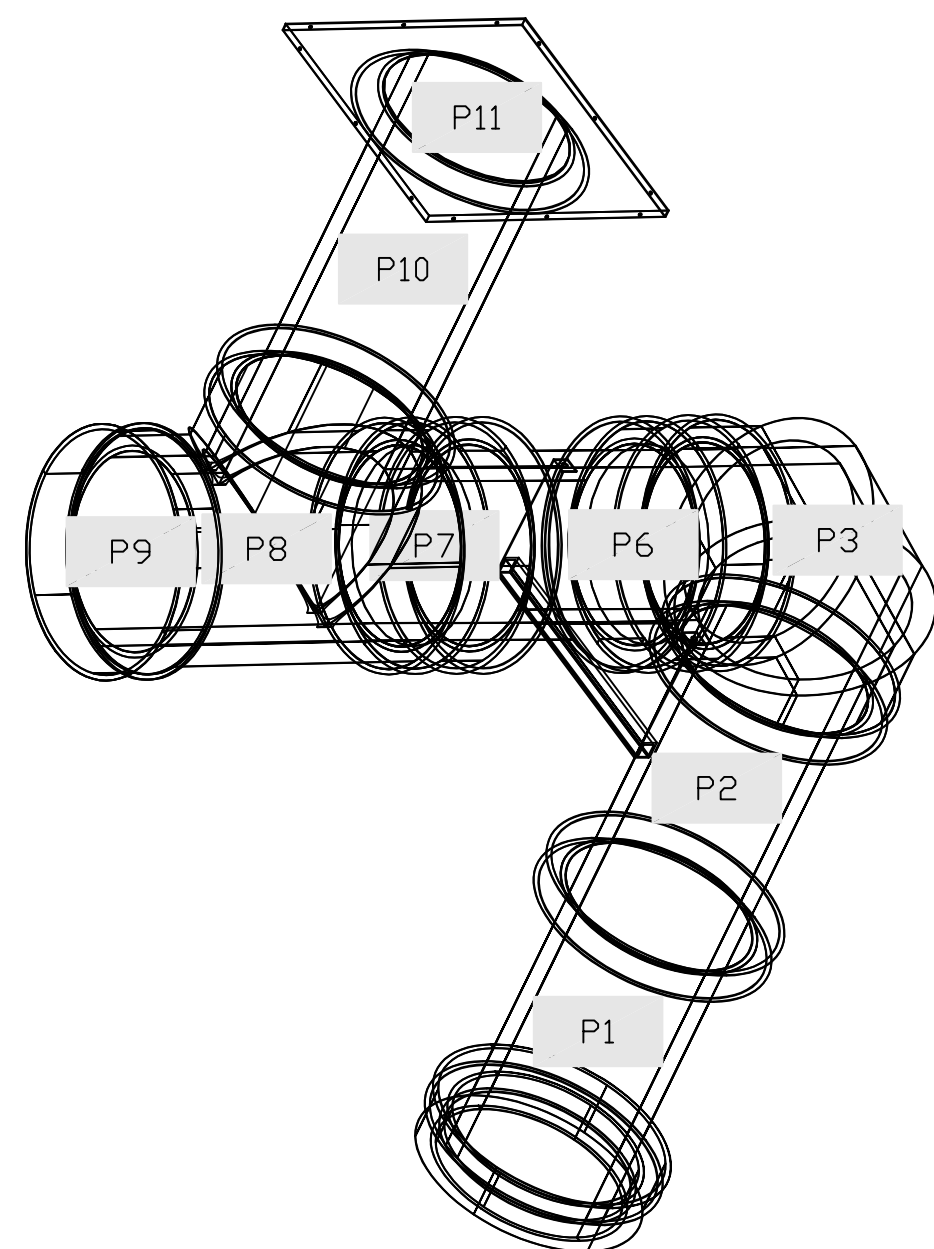
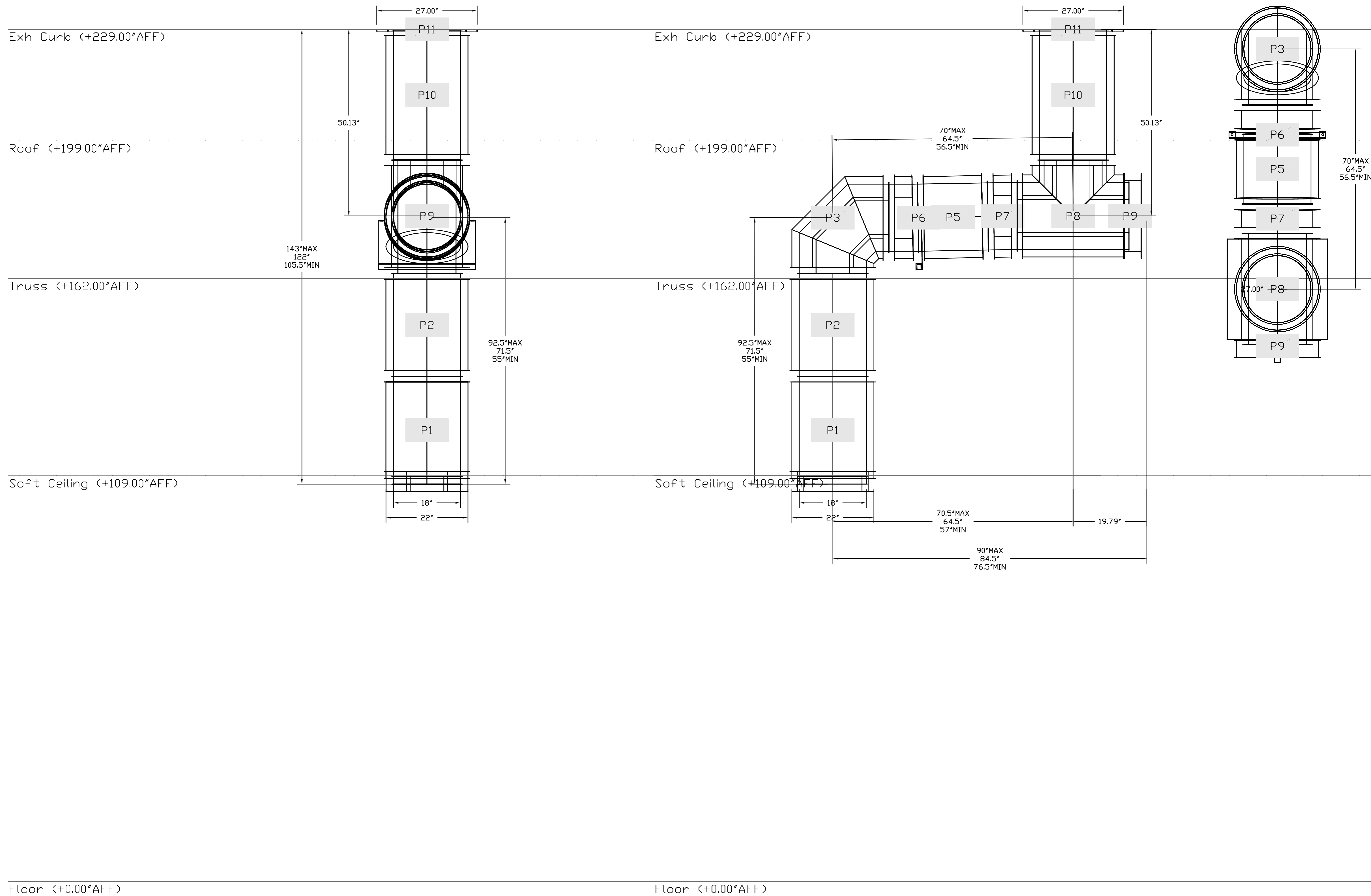
PANDA HOME SQUARE 2600
Monroe Pavillion, Highway 78
Monroe, GA 30655

M-408

HOOD DETAIL PLAN

PANDA HOME SQUARE 2600 R2

DUCTWORK #1 TOP VIEW DUCTWORK #1 SE VIEW



NOTE, UNLESS OTHERWISE STATED, PANDA
RESTAURANT GROUP SHALL PROVIDE ALL
EQUIPMENT ON THE FOLLOWING CAPTIVEAIRE
SHEETS, INCLUDING HOODS, FIRE SYTEM,
EXHAUST FANS, SUPPLY FAN, BATHROOM FAN
AND ELECTRICAL INTERLOCK PACKAGE

DOUBLE WALL DUCT BY MECHANICAL
PLEASE USE CONTACT BELOW FOR PRICING

ANSUL GAS VALVE:

THE ANSUL GAS VALVE IS PROVIDED BY
CAPTIVEAIRE SYSTEMS. CONTACT OUR OFFICE
WITH THE VALVE SIZE, 3 DAYS IN ADVANCE, O
WHEN IT IS NEEDED ON SITE.

FOR QUESTIONS CALL THE
CAPTIVEAIRE
SOUTHERN CA NATIONAL ACCOUNTS OFFICE

3002 DOW AVENUE, SUITE 410
TUSTIN, CA 92780
TEL: 714-677-2963 EMAIL: REG38@CAPTIVEAIRE.COM

[illegible]

KPI ENGINEERING, INC.

PROFESSIONAL ENGINEERS

"No matter the Scope, KPI has YOU Covered"

3203 QUEEN PALM DRIVE
TAMPA, FLORIDA 33619
PHONE (813) 241-6488
FAX (813) 241-6498

Board of Professional Engineers - License # PEF005267



PANDA EXPRESS, INC.
1683 Walnut Grove Ave.
Rosemead, California
91770
Telephone: 626.799.9898
Facsimile: 626.372.8288

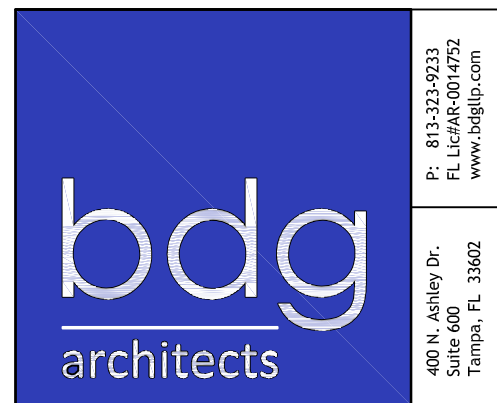
All ideas, designs, arrangement and plans indicated or represented by this drawing are the property of Panda Express Inc. and were created for use on this specific project. None of these ideas, designs, arrangements or plans may be used by or disclosed to any person, firm, or corporation without the written permission of Panda Express Inc.

REVISIONS:

ISSUE DATE:	
CHECK SET	06-12-23
PERMIT/BID	06-16-23

DRAWN BY: BDG

PANDA PROJECT #:	TBD
PANDA STORE #:	TBD
ARCH PROJECT #:	229201



Dean S Kenyon

DEAN S. KENYON, P.E.
GA LIC. # PE032813 EXP. 12/31/2024

PANDA EXPRESS

PANDA HOME SQUARE 2600
Monroe Pavillion, Highway 78
Monroe, GA 30655

M-409

HOOD DETAIL PLAN

PANDA HOME SQUARE 2600 R2

DUCTWORK #2 PARTS - JOB#5966108 DOUBLE WALL

TAG	PART #	CFM	GPM	ZONE	COVEREDBY	SP	WEIGHT	VELOCITY	QTY	DESCRIPTION
P1	DW1829DWLT-2R-S	3000				-0.007	50.46	1697.65	1	DOUBLE WALL DUCT - 18" INNER DUCT, 29' LONG - 2 LAYERS REDUCED CLEARANCE - 22" STAINLESS STEEL OUTER SHELL.
P2	DW1847DWAJD-2R-S	3000				-0.007	107.98	1697.65	1	DOUBLE WALL ADJUSTABLE DUCT - 18" INNER DUCT - 2 LAYERS REDUCED CLEARANCE - 22" STAINLESS STEEL OUTER SHELL. MIN LENGTH = 11' / MAX LENGTH = 48.5' / ADJUSTMENT = 30.5' / ADJUSTABLE SECTION MAY NEED TO BE CUT. INCLUDES SINGLE AND DOUBLE WALL CLAMPS.
P3	DW1890DWASY-2R-S	3000				-0.09	45.59	1697.65	1	DOUBLE WALL DUCT - 18" INNER 90 DUCT - 2 LAYERS REDUCED CLEARANCE - 22" STAINLESS STEEL OUTER SHELL.
P4	DW1801DWOFFSETASY-2R-S	3000				-0.002	14.66	1697.65	1	DOUBLE WALL DUCT - 18" INNER DUCT RISER & 1 DEGREE OFFSET - 2 LAYERS REDUCED CLEARANCE - 22" STAINLESS STEEL OUTER SHELL.
P5	DW1847DWAJD-2R-S	3000				-0.01	107.98	1697.65	1	DOUBLE WALL ADJUSTABLE DUCT - 18" INNER DUCT - 2 LAYERS REDUCED CLEARANCE - 22" STAINLESS STEEL OUTER SHELL. MIN LENGTH = 11' / MAX LENGTH = 48.5' / ADJUSTMENT = 30.5' / ADJUSTABLE SECTION MAY NEED TO BE CUT. INCLUDES SINGLE AND DOUBLE WALL *V* CLAMPS.
P6	DW1801DWOFFSETASY-2R-S	3000				-0.002	14.66	1697.65	1	DOUBLE WALL DUCT - 18" INNER DUCT RISER & 1 DEGREE OFFSET - 2 LAYERS REDUCED CLEARANCE - 22" STAINLESS STEEL OUTER SHELL.
P7 ASSEMBLED W/P8	DW18DWTEASY-2R-S	3000		1		-0.144	55.68	1697.65	1	DOUBLE WALL DUCT - 18" INNER TEE DUCT - 2 LAYERS REDUCED CLEARANCE - 22" STAINLESS STEEL OUTER SHELL.
P8 ASSEMBLED W/P7 □=S	DW18DWACCDORCOV-2R-S						26.16		1	DOUBLE WALL DUCT - 18" INNER ACCESS DOOR & 22" ACCESS DOOR COVER WITH CLAMPS - 2 LAYERS REDUCED CLEARANCE - 22" STAINLESS STEEL OUTER SHELL.
P9 ASSEMBLED W/P10	DW1835DWLTTP-2R-S	3000				-0.009	58.74	1697.65	1	DOUBLE WALL DUCT - 18" INNER DUCT, 35' LONG - 2 LAYERS REDUCED CLEARANCE - 22" STAINLESS STEEL OUTER SHELL - USED WITH TRANSITION PLATES
P10 ASSEMBLED W/P9	DW2618TPDBEX	3000					9.00	1697.65	1	DUCT TO CURB TRANSITION 3/4" DOWN TURN, 26 1/2" CURB TO 18" DUCT, 16 GA ALUMINIZED. USED ON NCA16FA / NCA16HPFA & NCA18FA / NCA18HPFA. TRANSITION PLATE OD IS 27.00" DESIGNED FOR USE WITH EXHAUST FAN. NON-STANDARD PART.
SYSTEM AT P10						-1.231	0.00			
P11	DW2226SADKIT						8.80		1	DUCT - HORIZONTAL SADDLE SUPPORT KIT, USED WITH 22" OD - INCLUDES UNI-STRUT CUT TO LENGTH, DW2226SAD, & HARDWARE BAG 4.
	3M-2000PLUS						0.80		3	DUCT - 3M FIRE BARRIER 2000 PLUS SILICONE - USED AS SEALANT TO SEAL DUCT JOINTS.
	DW18DWCLASY-2R-S						8.70		3	DUCT - 18" DUCT - 22" DOUBLE *V* CLAMP - 2R INSULATION & SINGLE *V* CLAMP INCLUDED - REDUCED CLEARANCE.
TOTAL WEIGHT							528.21			

DOUBLE WALL FACTORY BUILT DUCTWORK

- ALL DUCTWORK IS REQUIRED TO BE INSTALLED WITH THE MAXIMUM SUPPORT SPACING LISTED BELOW.
- FOR A COMPLETE LIST OF APPROVED SUPPORT METHODS, SEE THE ENTIRE INSTALLATION AND OPERATION MANUAL.
- DUCTWORK SHALL SLOPE NOT LESS THAN 1/16" PER LINEAR FOOT TOWARDS THE HOOD OR AN APPROVED GREASE COLLECTION RESERVOIR.
- WHERE HORIZONTAL DUCTS EXCEED 75 FEET IN LENGTH, THE SLOPE SHALL NOT BE LESS THAN 3/16" PER LINEAR FOOT.

HORIZONTAL	
DUCT DIAMETER	SUPPORT SPACING (FT)
5'	7'
6'	7'
7'	7'
8'	7'
10'	7'
12'	7'
14'	7'
16'	7'
18'	5'
20'	5'
22'	5'
24'	5'
26'	5'
28'	5'
30'	5'
32'	5'
34'	5'
36'	5'

VERTICAL			
TYPE	WALL SUPPORT (FT)	CURB SUPPORT (FT)	FLOOR SUPPORT (FT)
2R & 2R HT (5'-16")	20'	24'	24'
2R (18")	18'	24'	24'
3R & 3Z (5'-24")	10'	24'	24'
3Z (26" -36")	10'	20'	20'

DO NOT LEAK TEST USING SMOKE BOMBS CONTAINING CHLORINES/CHLORIDES. CONSULT WITH CAPTIVEAIRE FOR PROPER LEAK TESTING METHODS.

NOTE: UNLESS OTHERWISE STATED, PANDA RESTAURANT GROUP SHALL PROVIDE ALL EQUIPMENT ON THE FOLLOWING CAPTIVEAIRE SHEETS, INCLUDING: HOODS, FIRE SYTEM, EXHAUST FANS, SUPPLY FAN, BATHROOM FAN AND ELECTRICAL INTERLOCK PACKAGE

DOUBLE WALL DUCT BY MECHANICAL
PLEASE USE CONTACT BELOW FOR PRICING

ANSUL GAS VALVE: $3/4" = 1'-0"$

THE ANSUL GAS VALVE IS PROVIDED BY

FOR QUESTIONS CALL THE
CAPTIVEAIRE
SOUTHERN CA NATIONAL ACCOUNTS OFFICE
3002 DDW AVENUE, SUITE 410
TUSTIN, CA 92780
TEL: 714-677-2963 EMAIL: REG83@CAPTIVEAIRE.COM

KPI ENGINEERING, INC.

PROFESSIONAL ENGINEERS
"No matter the Scope, KPI has YOU Covered"
 3203 QUEEN PALM DRIVE
 TAMPA, FLORIDA 33619
 PHONE (813) 241-6488
 FAX (813) 241-6498
 Board of Professional Engineers - License # PEF005267

REVISIONS	
DESCRIPTION	DATE:
△	
△	
△	
△	
△	
△	



Southern CA National Accounts

3002 Dow Ave., Suite 410, Tustin, CA. 92780 PHONE: (714) 877-2963 EMAIL: reg85@captivair.com



www.captivair.com

Panda Express - Monroe GA
MONROE, GA, 30655

DATE: 4/21/2023

DWG.#:
5966108

DRAWN BY: AH-83

SCALE:
1/4" = 1'-0"

MASTER DRAWING

SHEET NO.
11



PANDA EXPRESS, INC.
1683 Walnut Grove Ave.
Rosemead, California
91770
Telephone: 626.799.9898
Facsimile: 626.372.8288

All ideas, designs, arrangement and plans indicated or represented by this drawing are the property of Panda Express Inc. and were created for use on this specific project. None of these ideas, designs, arrangements or plans may be used by or disclosed to any person, firm, or corporation without the written permission of Panda Express Inc.

REVISIONS:

ISSUE DATE:	
CHECK SET	06-12-23
PERMIT/BID	06-16-23

ISSUE DATE:

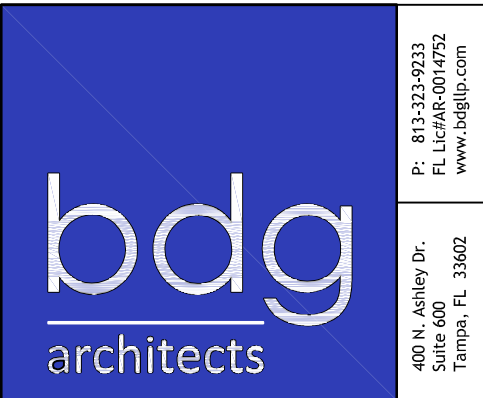
CHECK SET	06-12-23
PERMIT/BID	06-16-23

DRAWN BY: BDG

PANDA PROJECT #: TBD

PANDA STORE #: TBD

ARCH PROJECT #: 229201



Dean S Kenyon

DEAN S. KENYON, P.E.
GA LIC. # PE032813 EXP. 12/31/2024

PANDA EXPRESS

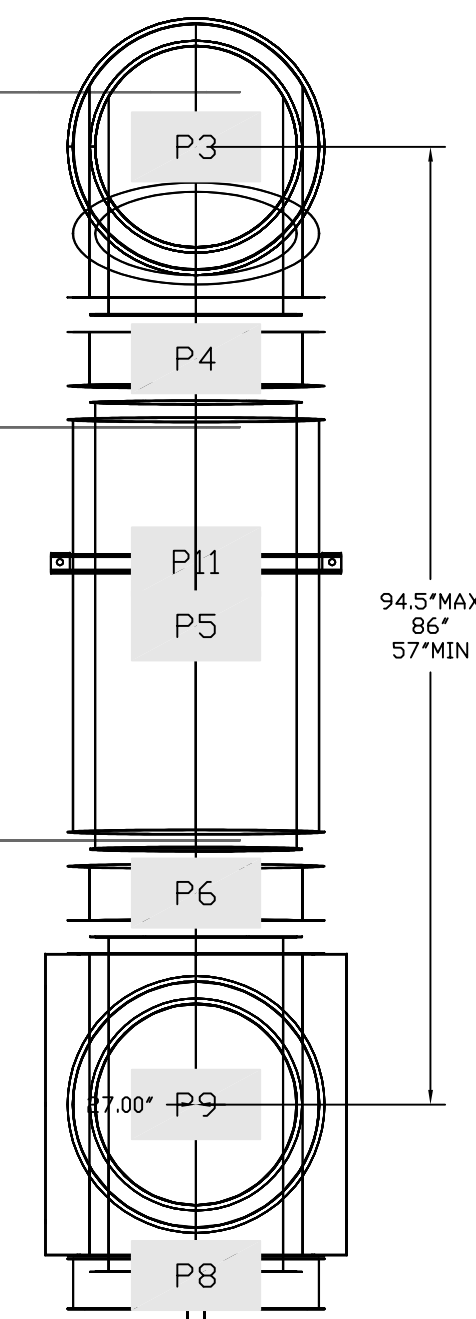
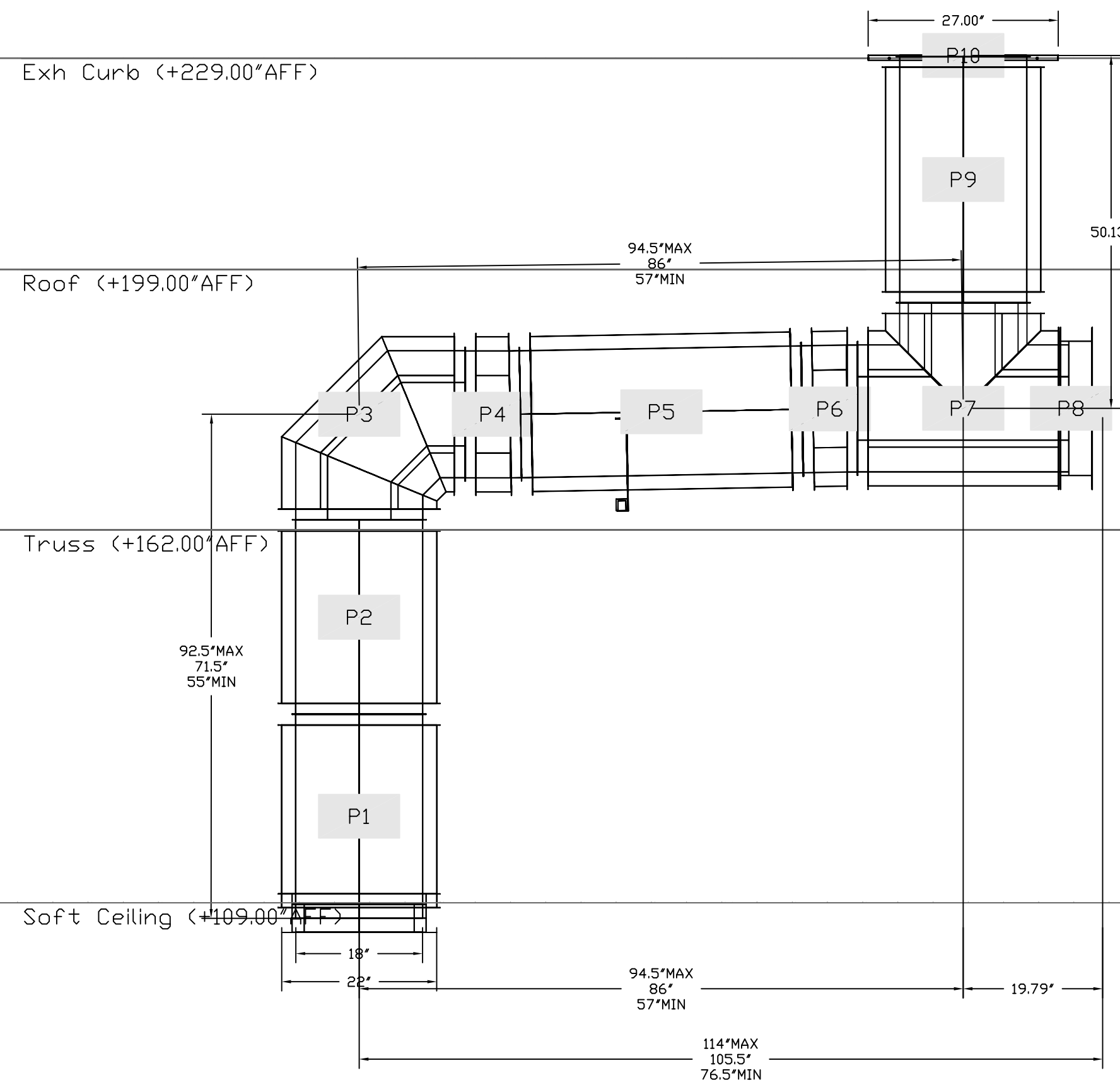
PANDA HOME SQUARE 2600
Monroe Pavillion, Highway 78
Monroe, GA 30655

M-410

HOOD DETAIL PLAN

PANDA HOME SQUARE 2600 R2

DUCTWORK #2 TOP VIEW



FOR QUESTIONS CALL THE
CAPTIVEAIRE
SOUTHERN CA NATIONAL ACCOUNTS OFFICE
3002 DOW AVENUE, SUITE 410
TUSTIN, CA 92780
TEL: 714-677-2963 EMAIL: REG83@CAPTIVEAIRE.COM

[illegible]

KPI ENGINEERING, INC.

PROFESSIONAL ENGINEERS

"No matter the Scope, KPI has YOU Covered"

3203 QUEEN PALM DRIVE
TAMPA, FLORIDA 33619
PHONE (813) 241-6488
FAX (813) 241-6498

Board of Professional Engineers – License # PE0005267





