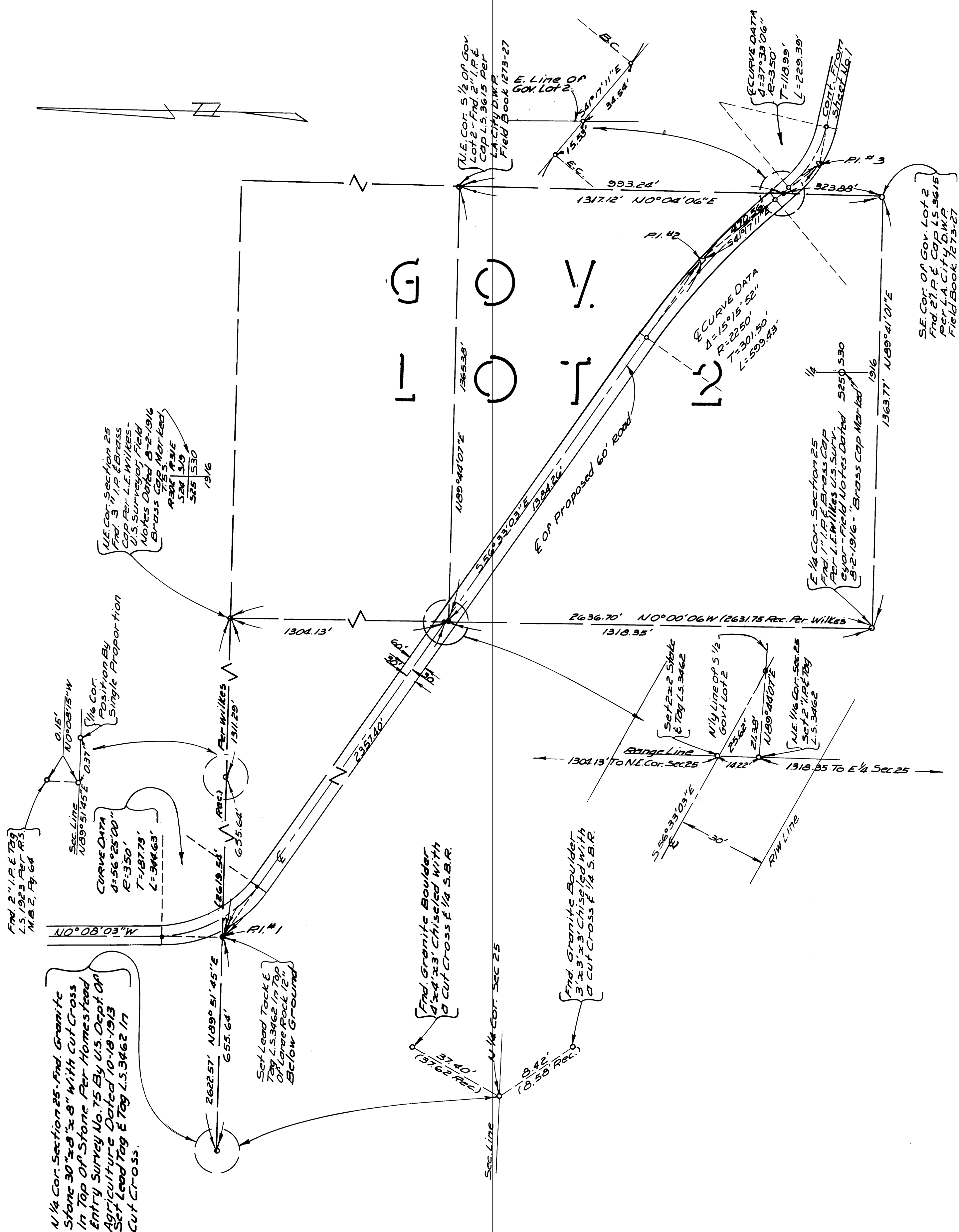


IN THE UNINCORPORATED TERRITORY
OF THE COUNTY OF MONO, STATE OF
CALIFORNIA.

BEING A SURVEY OF A PORTION OF SECTION
25, TOWNSHIP 5 SOUTH, RANGE 30 EAST, &
SECTION 30, TOWNSHIP 5 SOUTH, RANGE 31 EAST,
MOUNT DIABLO MERIDIAN.



P/S. Vol 1, Pg. 18-A